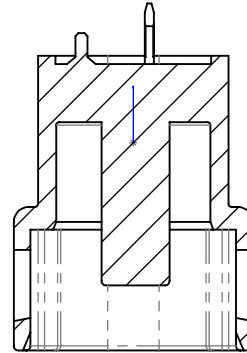
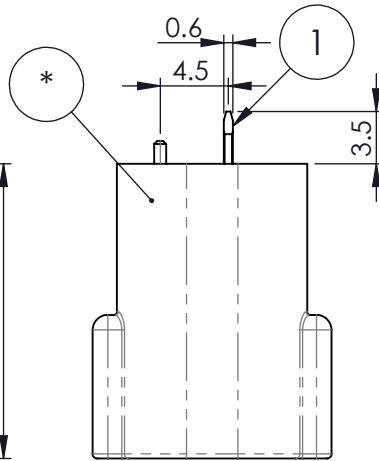
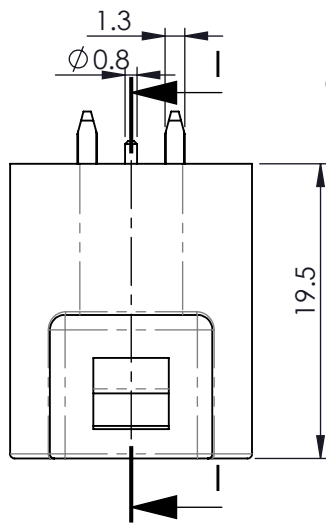
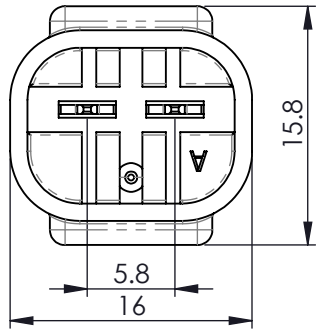


THIS IS A C.A.D. GENERATED DRAWING
DO NOT MAKE MANUAL REVISIONS TO MASTER.



ISSUE NUMBER

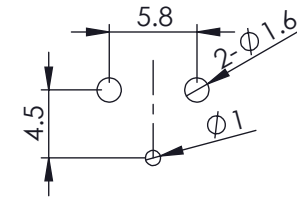
ORIGINAL ①



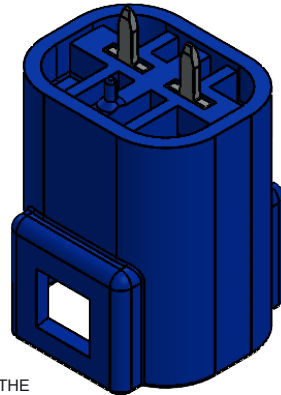
SECTION I-I

MATERIALS:
HOUSING: PBT, UL94V-0, BLUE COLOR
TERMINAL: BRASS, TIN PLATED

- SPECIFICATIONS**
1. PITCH: 5.8MM
 2. RATED VOLTAGE: 300V
 3. RATED CURRENT: 10A MAX
 4. WITHSTAND VOLTAGE: AC1700V R.M.S.
 5. CONTACT RESISTANCE: 10 mOHMS MAX
 6. INSULATION RESISTANCE: 1000 MOHMS MIN/DC 500V
 7. TEMPERATURE RANGE: -40°C ~ +105°C
 8. WATERPROOF GRADE: TESTED AND CERTIFIED TO IP67



RECOMMENDED PCB HOLE



ITEM NO.	DESCRIPTION	QTY.
1	570-420 PCB-TERMINAL-1	2
2	572-002-420-PCB HOUSING	1

Waterproof Connector, PCB Mount, Male,
Blue, 2Pin
572-002-420-301

ACAD REFERENCE NO. 572-002-420-301

DRAWN:R.STA.MONICA DATE: NOV.16/15

CHECKED: DATE:

SCALE: NOT TO SCALE SHEET 1 OF 1

DRAWING NUMBER 572-002-420-301 ISSUE 1



EDAC INC
TORONTO, ONTARIO
CANADA

YOUR CONNECTION TO QUALITY & SERVICE

THESE DRAWINGS AND SPECIFICATIONS ARE THE PROPERTY OF EDAC INC. AND SHALL NOT BE REPRODUCED, OR COPIED OR USED AS THE BASIS FOR THE MANUFACTURE OR SALE OF APPARATUS WITHOUT WRITTEN PERMISSION.



THIS SERIES FULLY CONFORMS TO THE EUROPEAN UNION DIRECTIVES 2011/65/EU FOR RoHS COMPLIANCY