

Satz Reduzierringe

Inhalt des Satzes (je 1 St.):

Abschlusscheibe 30/25, G06 1601 000
 Reduzierring 30/25, G06 1602 000
 Reduzierring 35/30, G06 1637 000
 Reduzierring M35x0.5/30, G06 1638 000
 Reduzierring 30/C-Mount, G06 1658 000
 Reduzierring 23.2, G06 1636 000
 Reduzierring W0.8"x1/36, G06 1621 000

Set of Adapter

Contents:

Cap 30/25, G06 1601 000
 Adapter 30/25, G06 1602 000
 Adapter 35/30, G06 1637 000
 Adapter M35x0.5/30, G06 1638 000
 Adapter 30/C-Mount, G06 1658 000
 Adapter 23.2, G06 1636 000
 Adapter W0.8"x1/36, G06 1621 000

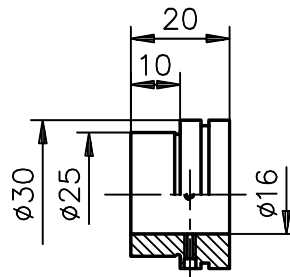
Satz Reduzierringe Set of Adapter

| Produktbezeichnung | Part No. |
|--------------------|------------|
| Item Title | Part No. |
| Set of Adapter | G061605000 |



Reduzierring 16

- Zum Anschluss von Machine Vision Objektiven mit Außen- \varnothing $d=16$ mm an \varnothing 25 und 30 mm



Adapter 16

- Fits outer- \varnothing $d = 16$ mm compact objectives to \varnothing 25 and 30 mm mounts

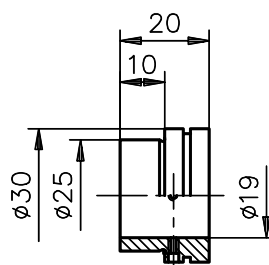
Reduzierring 16 Adapter 16

| Produktbezeichnung | Part No. |
|--------------------|------------|
| Item Title | Part No. |
| Adapter 16 | G061622000 |



Reduzierring 19

- Zum Anschluss von Machine Vision Objektiven mit Außen- \varnothing $d=19$ mm an \varnothing 25 und 30 mm



Adapter 19

- Fits outer- \varnothing $d = 19$ mm compact objectives to \varnothing 25 and 30 mm mounts

Reduzierring 19 Adapter 19

| Produktbezeichnung | Part No. |
|--------------------|------------|
| Item Title | Part No. |
| Adapter 19 | G061623000 |