

N° 081/16

**! UPDATE !**

Updated / added content highlighted in blue colour

Dear Customer,

With this INFINEON Technologies Information Note we would like to inform you about the following

**Introduction of several changes for PG-LQFP-100 packages leading to a change in the visual appearance.**

N° 081/16

**! UPDATE !**

Updated / added content highlighted in blue colour

**Introduction of several changes for PG-LQFP-100 packages leading to a change in the visual appearance.**

► **Products affected:**

Sales Name	SP N°	OPN	Package
TLE8888QK	SP000921534	TLE8888QKXUMA1	PG-LQFP-100
TLE8888-1QK	SP001279928	TLE88881QKXUMA1	PG-LQFP-100
TLE8888-2QK	SP001279926	TLE88882QKXUMA1	PG-LQFP-100

► **Detailed Change Information:**

**Subject:** Introduction of several changes for PG-LQFP-100 packages leading to a change in the visual appearance.

**Reason:** Harmonization of Infineon's QFP100 package platform

**Description:**

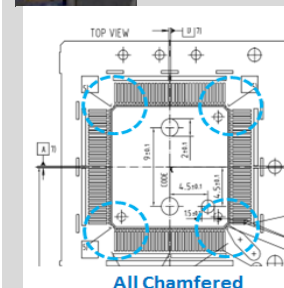
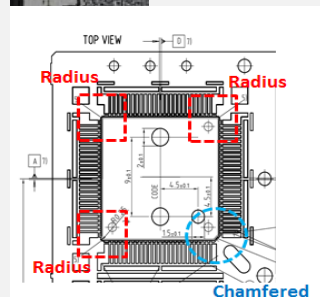
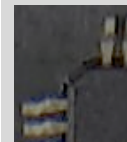
**Package outline**

Old

New

- Chamfer and radius corner

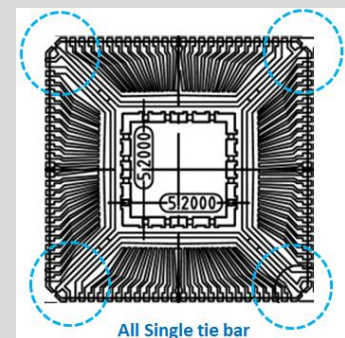
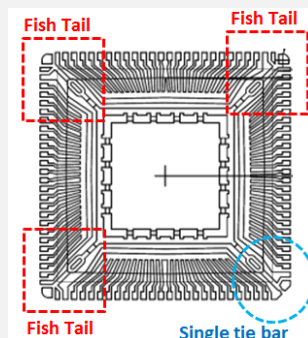
- 4 chamfer corner



**Inner tie bar design**

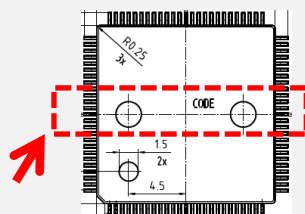
- Fish Tail and Single tie bar design

- Single tie bar design



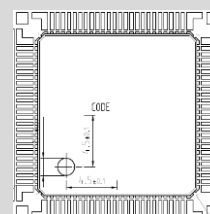
## Top ejector pin

- With top ejector pin mark



(TLE8888-1QK and TLE8888-2QK have the same top ejector pin as the shown TLE8888Qk).

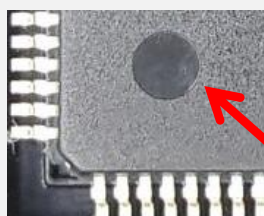
- Without top ejector pin mark



(TLE8888-1QK and TLE8888-2QK have the same top ejector pin as the shown TLE8888Qk).

## Pin 1 indicator

- Without Inner ring design at pin 1 indicator



Pin 1 indicator

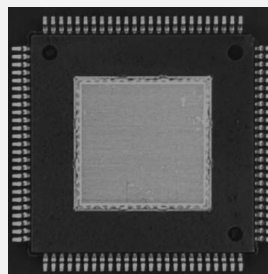
- With Inner ring design at pin 1 indicator



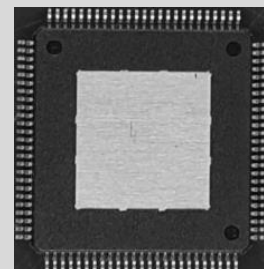
Pin 1 indicator

## Leadframe

- With Ugroove Design



- Without Ugroove Design



## Data sheet

- Rev. 1.1

- Rev 1.2  
(for details please refer to attached 3\_cip08116)

### ► Product Identification:

~~Possible by date code.~~

Traceability assured via lot number.

# INFORMATION NOTE



N° 081/16

**! UPDATE !**

Updated / added content highlighted in blue colour

► **Impact of Change:**

No impact expected on the quality, reliability, function and manufacturability of the products affected due to this change.

► **Attachments:**

3\_cip08116 ([data sheet rev. 1.2](#))

► **Intended start of delivery:**

May 2017

If you have any questions, please do not hesitate to contact your local Sales office.