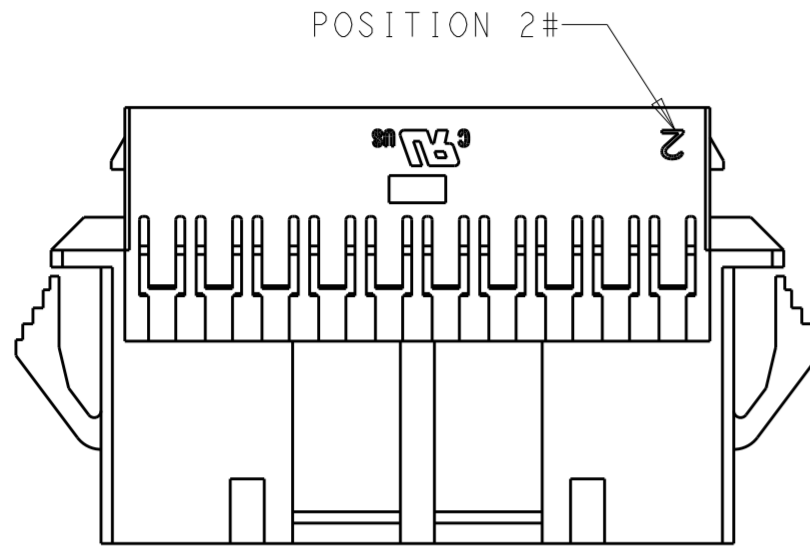
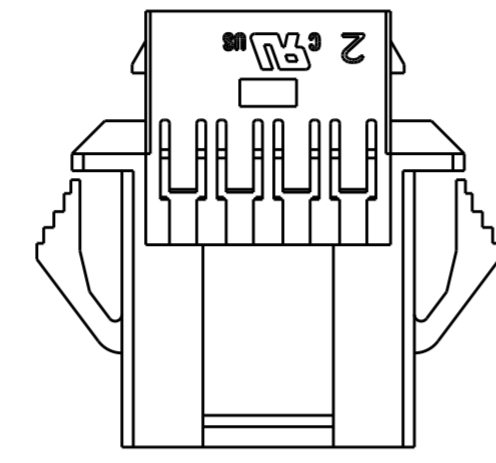


THIS DRAWING IS UNPUBLISHED. RELEASED FOR PUBLICATION 20
 © COPYRIGHT 20 BY - ALL RIGHTS RESERVED.

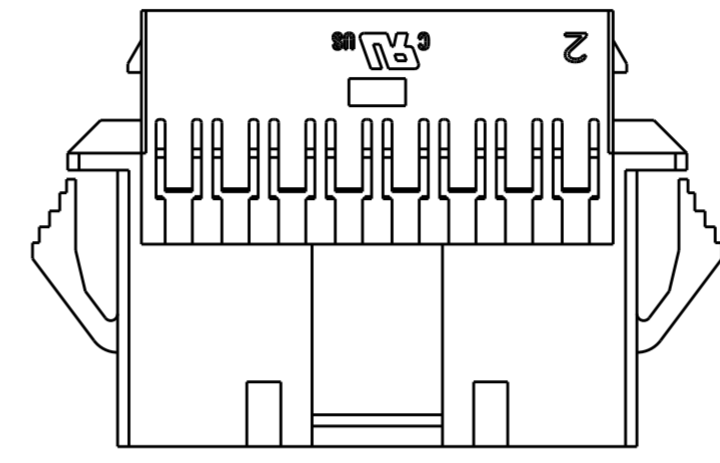
LOC		DIST		REVISIONS			
P	LTR	DESCRIPTION	DATE	DWN	APVD		
	A	FIRST RELEASED	16AUG2019	WH	DZ		



DUAL LATCH DETAIL FOR
1-2324584-8 THROUGH 4-2324584-0



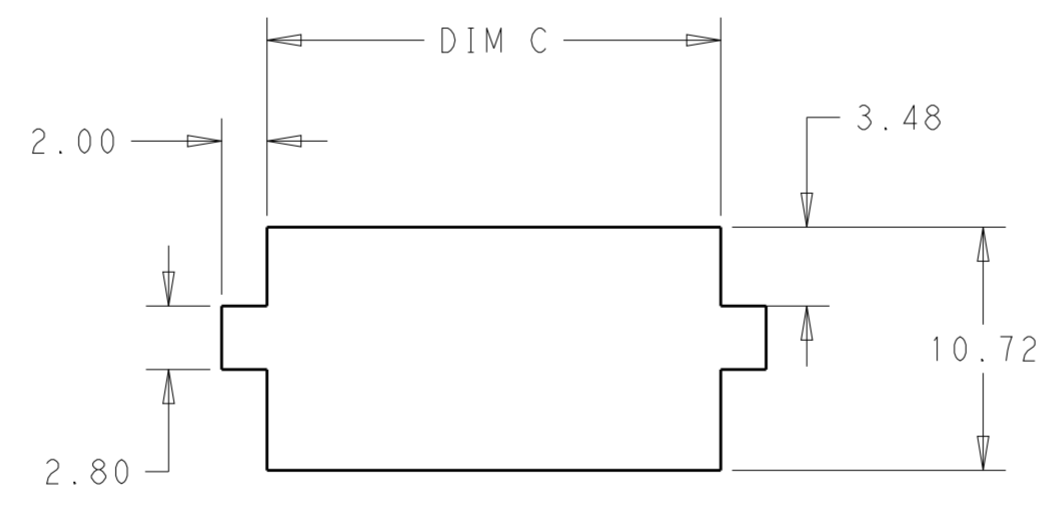
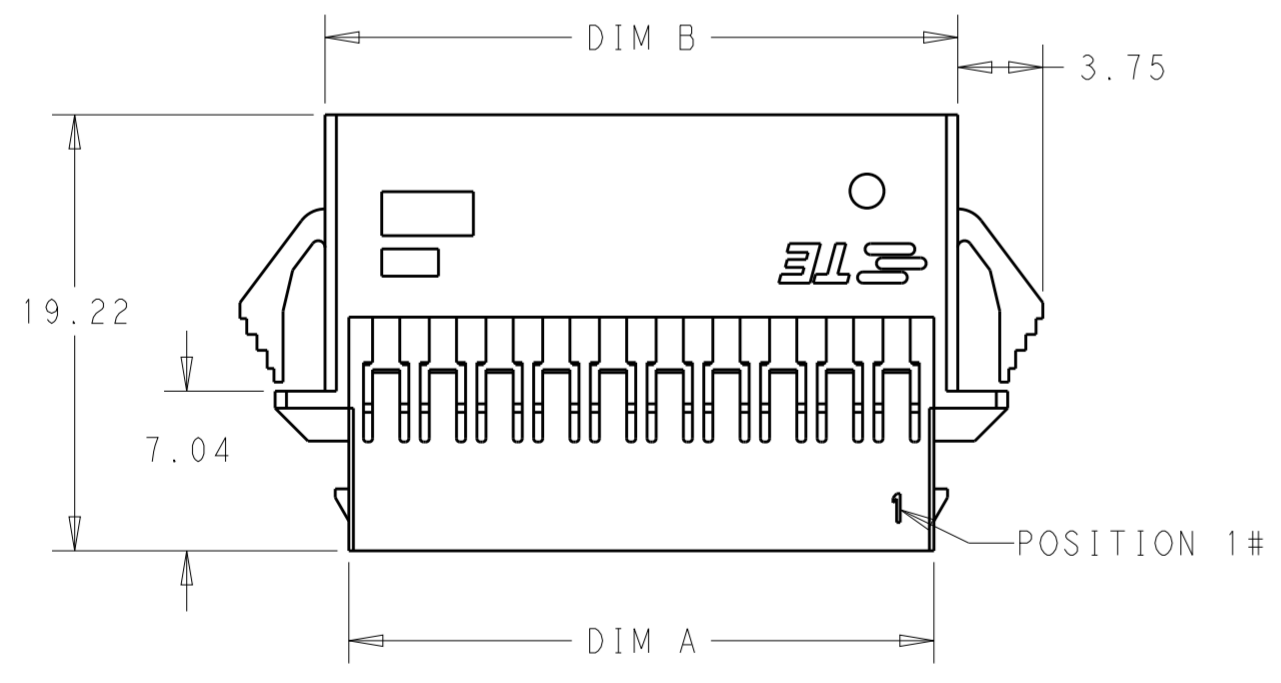
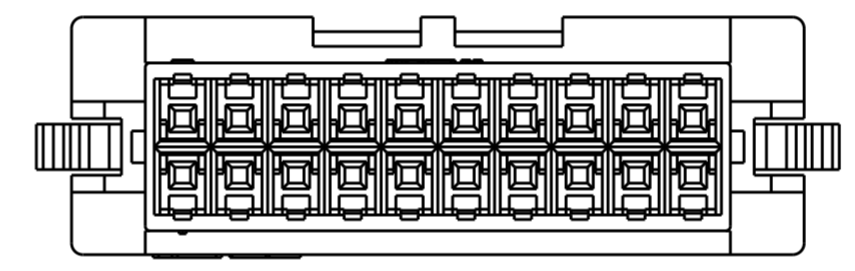
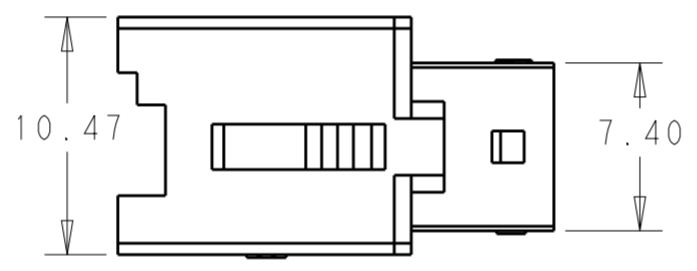
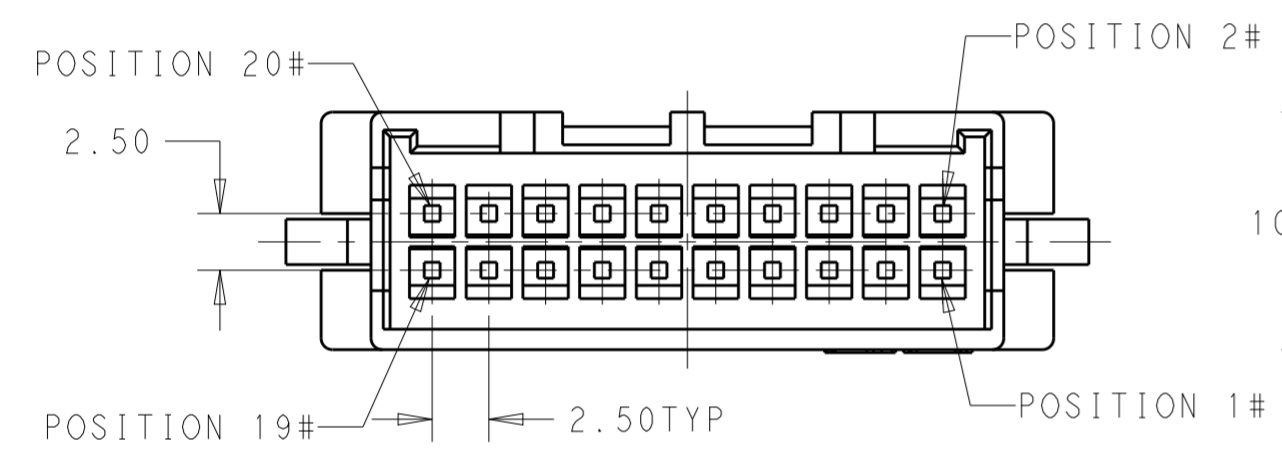
SINGLE LATCH DETAIL FOR
2324584-8 & 1-2324584-0



SINGLE LATCH DETAIL FOR
1-2324584-2 THRU 1-2324584-6

NOTES:

- 1 MATERIAL: NYLON 66, UL94-V0, COLOR: NATURAL
- 2. DIMENSIONS SHOWN REPRESENT PRODUCT IN DRY, AS MOLDED, CONDITION. ADDITIONAL 2% GROWTH DUE TO SUBSEQUENT MOISTURE ABSORPTION MAY OCCUR AND SHOULD BE ACCOUNTED FOR.
- 3. RECOMMENDED MATES PLUG: []-2324579-[]
- 4. THE HOUSING ACCEPTS TERMINALS: 2238007-1 OR 2238008-1
- 5. ACCEPTS OPTIONAL TPA: []-1969541-[] OR []-2315219-[]
- 6 APPLICABLE PANMEL MOUNT THICKNESS: 0.8-2.5MM



RECOMMENDED PANEL CUTOUT DIMENSIONS
TOLERANCE: ±0.05

2-2324584-0 SHOWN

40	54.50	52.89	50.79	4-2324584-0
38	52.00	50.39	48.29	3-2324584-8
36	49.50	47.89	45.79	3-2324584-6
34	47.00	45.39	43.29	3-2324584-4
32	44.50	42.89	40.79	3-2324584-2
30	42.00	40.39	38.29	3-2324584-0
28	39.50	37.89	35.79	2-2324584-8
26	37.00	35.39	33.29	2-2324584-6
24	34.50	32.89	30.79	2-2324584-4
22	32.00	30.39	28.29	2-2324584-2
20	29.50	27.89	25.79	2-2324584-0
18	27.00	25.39	23.29	1-2324584-8
16	24.50	22.89	20.79	1-2324584-6
14	22.00	20.39	18.29	1-2324584-4
12	19.50	17.89	15.79	1-2324584-2
10	17.00	15.39	13.29	1-2324584-0
8	14.50	12.89	10.79	2324584-8
POS	DIM.C	DIM.B	DIM.A	PART NO.

THIS DRAWING IS A CONTROLLED DOCUMENT.

DIMENSIONS: mm	TOLERANCES UNLESS OTHERWISE SPECIFIED:	DWN 27AUG2018 WARREN HUO	TE Connectivity
	0 PLC ±	CHK 28AUG2018 DANIEL ZHANG	
	1 PLC ±	APVD 28AUG2018 DANIEL ZHANG	
	2 PLC ±0.25	PRODUCT SPEC 108-106357	
	3 PLC ±	APPLICATION SPEC 114-13315	NAME CAP HOUSING, EP2.5 DUAL ROW WIRE TO WIRE, PANEL MOUNT
	4 PLC ±	WEIGHT -	SIZE A200779 CAGE CODE C-2324584
MATERIAL	FINISH	CUSTOMER DRAWING	RESTRICTED TO -
		SCALE N/A	SHEET 1 OF 1 REV A