

NUMBER C-177902



METRIC

PRINT DIST. DIMENSIONS IN MM. DO NOT SCALE PRINT.

PRINT DIST.

ロックタイプII
LOCK TYPE II

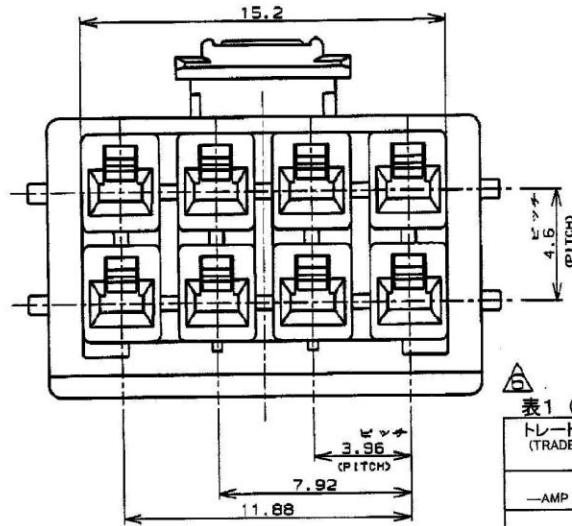
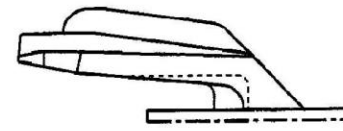
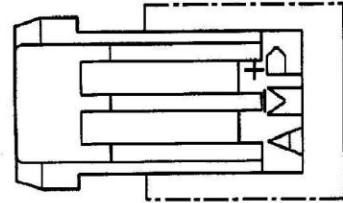
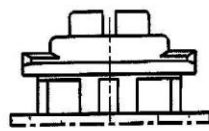
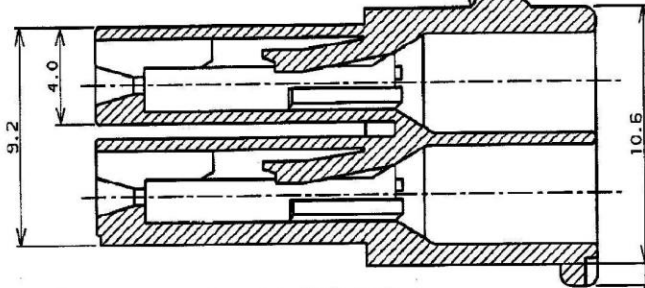


表1 (TABLE 1)

トレードマーク (TRADE MARK)	生産場所 (MANUFACTURING PLACE)
— AMP OR AMP	日本 (JAPAN)
—+ AMP OR AMP	中国 (CHINA(PRC))
* AMP OR AMP	韓国 (KOREA)

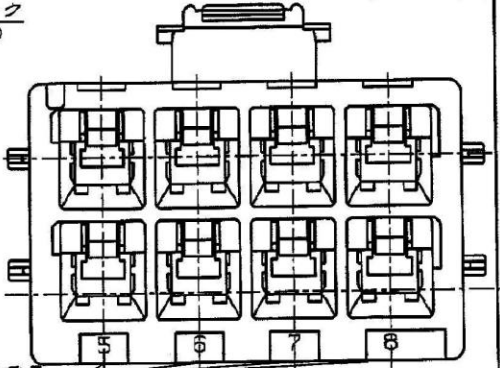
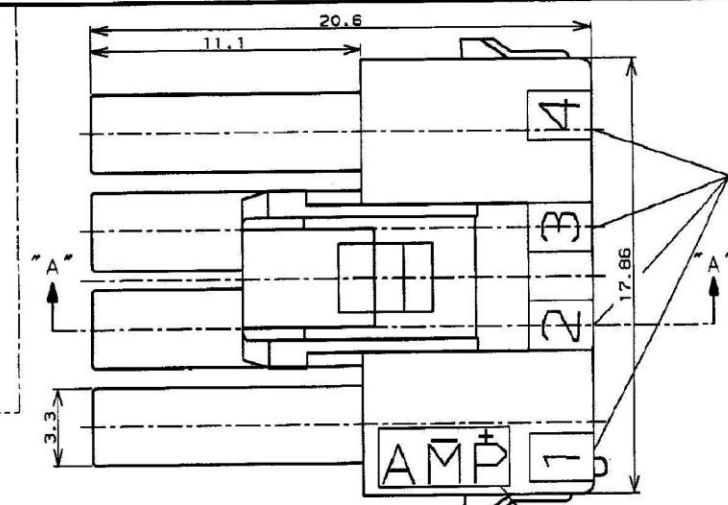
断面 "A-A" (SECT)



本図ロックタイプIを示す
AS SHOWN LOCK TYPE I

- NOTES;
- PRODUCT SPEC. 108-5410
 - APPLICABLE CONTACT P/N
REC CONTACT: 177915-□ (*20-16AWG)
177914-□ (*26-22AWG)

- 回路番号 (CIRCUIT No.)
- MATING CONN. P/N
CAP HSG: 179467-□ (FREE HANGING)
TAB CONTACT: 177917-□ (*20-16AWG)
177916-□ (*26-22AWG)
 - APPLICABLE PLATE P/N: 177920-□
 - INSTRUCTION SHEET: 411-5638
 - SEE TABLE 1
 - ALL PARTS MEET RTI ELECTRICAL RATING OF 105C ACCORDING TO UL 1777
 - PART 5-177902-1 COMPLY WITH GLOW WIRE REQUIREMENT FOR PARTS OF NON-METALLIC MATERIAL SUPPORTING A CURRENT-CARRYING CONNECTION DETAILED IN IEC 60335-1, SECTION 30(GWT)
 - PART 177902-7 COMPLY WITH HOT WIRE REQUIREMENT, PA66, UL 94V-0. HOT WIRE IGNITION(HWI) VERSION ARE MOLDED IN A RESIN THAT COMPLIES WITH THE HOT WIRE IGNITION TEST 109-32026 AND ARE RECOMMENDED FOR USE WITH HWI HOUSING THAT ALSO COMPLY.
 - Preliminary-not for production
 - APPLICATION SPEC: 114-5175



- 注: 1. 通用製品規格: 108-5410
2. 通用リソウト型番
リセ・コンタクト: 177915-□ (*20-16AWG)
177914-□ (*26-22AWG)
3. 適合相手側製品型番
キャップ・ハウジング: 179467-□ (雷吊りタイプ)
タブ・コンタクト: 177917-□ (*20-16AWG)
177916-□ (*26-22AWG)
4. 運用プレート型番: 177920-□
5. 取扱説明書: 411-5638

LOCK TYPE I	■ 自然色 (NATURAL)	8	5-177902-1
ロックタイプ	■ ハウジング色調 (HOUSING COLOR)	極数 (Pos.)	型番 (P/N)

ロックタイプII LOCK TYPE II	■ 自然色 (NATURAL)	8	177902-7
ロックタイプII LOCK TYPE II	■ 自然色 (NATURAL)	8	3-177902-1
ロックタイプI LOCK TYPE I	■ 青 (BLUE)	↑	↑ -6
ロックタイプI LOCK TYPE I	■ 黄 (YELLOW)	↓	↓ -4
ロックタイプ LOCK TYPE	■ 自然色 (NATURAL)	8	177902-1
ロックタイプ LOCK TYPE	■ ハウジング色調 (HOUSING COLOR)	極数 (Pos.)	型番 (P/N)

C5	REVISED PER ECR-19-017851	SM	DZ	20NOV '19
C4	REVISED ECR-14-017020	WW	D.Z	14NOV '2014
C3	REVISED ECR-14-013449	WW	D.Z	14SEP '2014
C2	REVISED ECR-13-019881	A.Z	D.Z	23DEC '2013
C1	REVISED ECR-12-019829	A.Z	F.M	30V16 '2012
C	変更 F100-1369-01	OK	AS	17JUL '07
B	変更 F100-0242-00	OK	AS	17JUL '07
LTR	変更 (REVISION RECORD)	DR	CHK	DATE

線色範囲 (WIRE RANGE)	絶縁色調 (INSULATION DIA.)	名称 (NAME)
mm ² (AWG)	mmφ	AMP POWER DOUBLE LOCK CONN.
材料 (MATERIAL)	仕上げ (FINISH)	8極 3.96mmピッチ プラグハウジング (2列タイプ)
8極タイプ: UL94V-0 8極タイプ: UL94V-0	仕上 (FINISH)	AMP POWER DOUBLE LOCK CONN. 3.96mm PITCH PLUG HOUSING 8 Pos (DBL ROW)
DR. N. NAGASHIMA	DE. M. SHINDO	一般公差
CHK. M. SHINDO	APP. Y. KASHIWA	SIZE LOC 番号 (No.)
		B J C-177902

AMP Tyco Electronics AMP K.K. Kawasaki, Japan

10mm: ±0.2
10mm: ±0.25
30mm: ±1.00mm
±0.3

尺取 (SCALE) REV. SHEET

C6 1 OF 1

CUSTOMER DRAWING