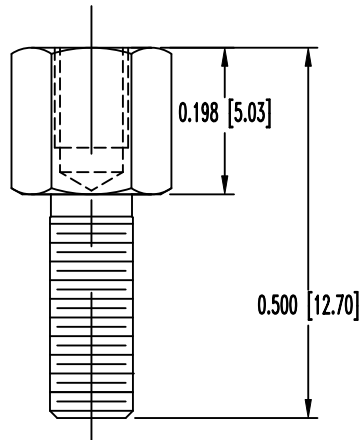


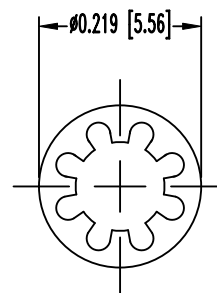
THIS DRAWING CONTAINS INFORMATION PROPRIETARY TO POSITRONIC AND ITS SUBSIDIARIES. POSITRONIC BELIEVES THE DATA ON THIS DRAWING TO BE RELIABLE. SINCE THE TECHNICAL INFORMATION IS GIVEN FREE OF CHARGE, THE USER EMPLOYS SUCH INFORMATION AT HIS OWN DISCRETION AND RISK. POSITRONIC ASSUMES NO RESPONSIBILITY FOR RESULTS OBTAINED OR DAMAGES INCURRED FROM USE OF SUCH INFORMATION IN WHOLE OR IN PART.

SK7732

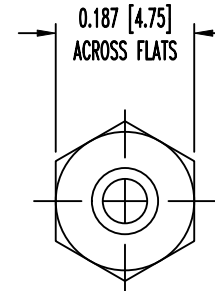
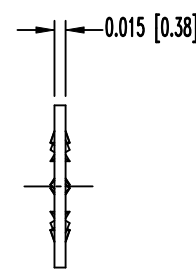
DATE	REV	REVISION RECORD	APP	DR	CK
11-03 21	B	ECO 85058	PA	CJ	MS



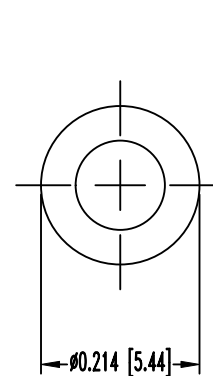
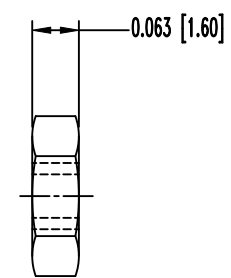
2X T2 JACKSCREWS



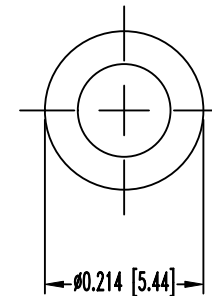
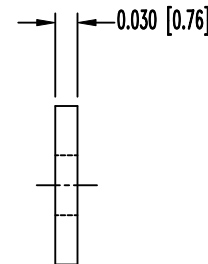
2X LOCKWASHER



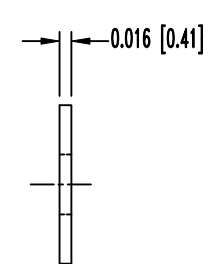
2X HEX NUT



2X WASHER




2X WASHER



NOTES:

- MATERIALS AND FINISHES:
 JACKSCREWS: STEEL, ZINC PLATE WITH CHROMATE SEAL.
 WASHERS: BRASS, ZINC PLATE WITH CHROMATE SEAL.
 HEXNUTS: BRASS, ZINC PLATE WITH CHROMATE SEAL.
 LOCKWASHERS: PHOSPHOR BRONZE, ZINC PLATE WITH CHROMATE SEAL.
- DETAILED PRODUCT, MECHANICAL AND ELECTRICAL INFORMATION IS AVAILABLE IN THE LATEST D-SUB ACCESSORIES PRODUCT PUBLICATION AT CONNECTPOSITRONIC.COM.
- COMPONENTS ARE COMPLIANT TO THE CURRENT RoHS DIRECTIVE.
- DIMENSIONS ARE IN INCHES [MILLIMETERS].

	POSITRONIC INDUSTRIES INC. SPRINGFIELD, MISSOURI 65801		SCALE N.T.S.	DRAWN BY YK
	D SERIES		APPROVED BY R. WILLIAMS	
DECIMAL TOL. ± 0.015 (0.38)	TITLE D00000T20/AA			
ANGULAR TOL. $\pm 5^\circ$	DATE 7-5-06	DRAWING NUMBER SK7732	REV. B	