

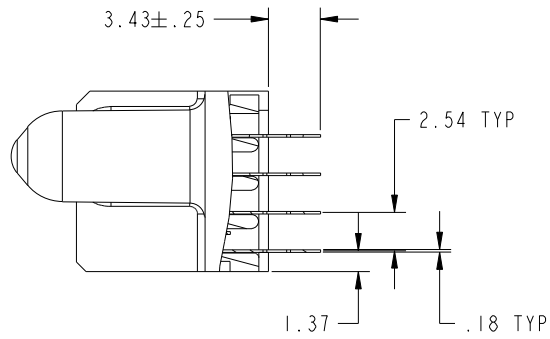


Tous droits strictement reserves. Reproduction ou communication a des tiers interdite sous quelque forme que ce soit sans autorisation ecrite du proprietaire. Propriete de c FCI. Droits de reproduction FCI.

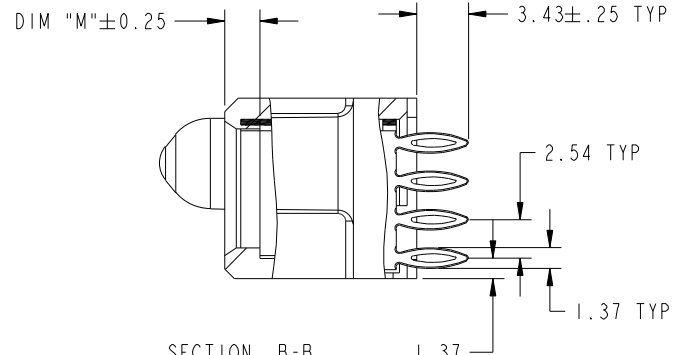
All rights strictly reserved. Reproduction or issue to third parties in any form whatever is not permitted without written authority from the proprietor. Property of FCI. Copyright FCI.



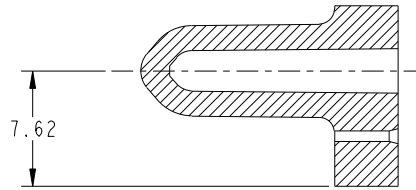
PRODUCT NUMBER  
51940-113--  
NOTE: 3



SECTION A-A  
SCALE 2:1



SECTION B-B  
SCALE 2:1



SECTION C-C  
SCALE 2:1

mat'l code		SEE NOTE		tolerances unless otherwise specified		CUSTOMER		 www.fciconnect.com	
lfr	ecn no.	dr	date	linear	0.X ± 0.5	COPY		title	
D					0.XX ± 0.25	projection		3P + 52S + 2P + 3ACP	
				angles	0.XXX ± 0.10			VERTICAL PRESS-FIT RECEPT	
					0° ± 2°			product family	
				dr	LH	12/23/04	PwrBlade		code
				enrg	LH	12/23/04	size		213
				chr	VICTOR LIN	12/23/04	dwg no		sheet
				appd	JOSEPH HSIA	12/23/04	A 51940-113		2
sheet index	revision sheet						scale		
							1:1		

cage code 2856

STATUS: Released Printed: Dec 20, 2010

A

A

B

B

1 | 2

Pro/E

PDM: Rev: D

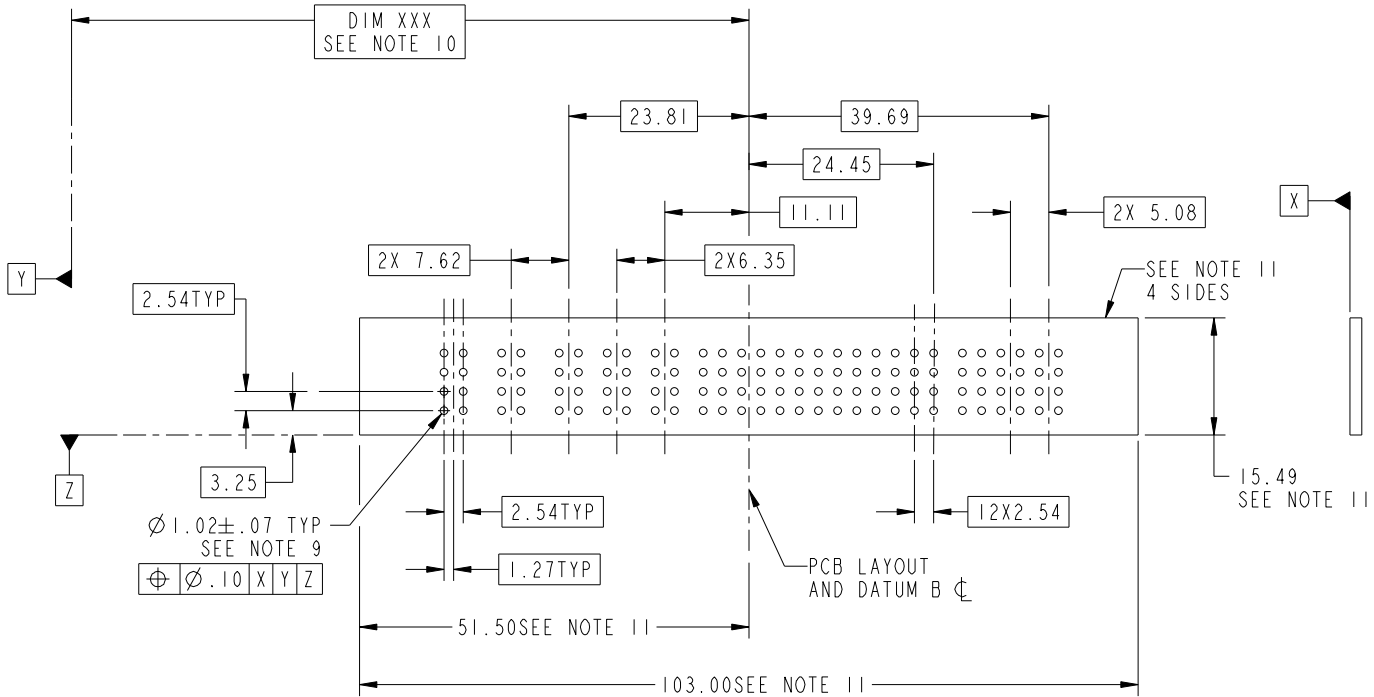
4

Tous droits strictement reserves. Reproduction ou communication a des tiers interdite sous quelque forme que ce soit sans autorisation ecrite du proprietaire. Propriete de c.FCI. Droits de reproduction FCI.



All rights strictly reserved. Reproduction or issue to third parties in any form whatever is not permitted without written authority from the proprietor. Property of FCI. Copyright FCI.

PRODUCT NUMBER  
51940-113--  
NOTE: 3



mat'l code		SEE NOTE		tolerances unless otherwise specified		CUSTOMER		 www.fciconnect.com	
lir	ecn no.	dr	date	linear	0.X ± 0.5		COPY		title 3P + 52S + 2P + 3ACP VERTICAL PRESS-FIT RECEPT
D					0.XX ± 0.25		projection		
					0.XXX ± 0.10				
				angles	0° ± 2°		 MM		product family PwrBlade code 213 size dwg no 51940-113 sheet 3
				dr	LH	12/23/04	scale		
				engr	LH	12/23/04	1:1		
				chr	VICTOR LIN 12/23/04				
				appd	JOSEPH HSIA 12/23/04				
sheet index	revision sheet								

cage code 2856

Pro/E

PDM: Rev: D

STATUS: Released

Printed: Dec 20, 2010



PRODUCT NUMBER

51940-113--  
NOTE: 3

NOTES:

1. DIMENSIONS AND TOLERANCES ARE IN ACCORDANCE WITH ASME Y14.5M, 1994 UNLESS OTHERWISE SPECIFIED.

CONNECTOR NOTES:

2 HOUSING MATERIAL: UL 94 V-0 GLASS FILLED  
HIGH-TEMP THERMOPLASTIC  
POWER CONTACT MATERIAL: COPPER ALLOY  
SIGNAL PIN MATERIAL: COPPER ALLOY

3. PLATING:

SEE ITEM 7 & 8 IN PRINT 10064183 FOR PLATING SPEC OF 51940-113; 51940-113LF PRESPECTIVELY.

4 MANUFACTURER'S NAME, P/N, AND DATE CODE TO APPEAR ON THIS SURFACE.

5. PRODUCT SPECIFICATION GS-12-149.  
APPLICATION SPECIFICATION BUS-20-067.

6. PACKAGED IN TRAYS.

PCB NOTES:

7. ALL HOLE DIAMETERS ARE FINISHED HOLE SIZE.

8 MOUNTING HOLES, WHERE APPLICABLE, ARE UNPLATED.

9  $\varnothing 1.151 \pm 0.025$  DRILLED HOLES PLATED WITH  
0.008 MIN SnPb OR Sn OVER 0.03  
TO 0.08 Cu PLATING TO ACHIEVE  
 $\varnothing 1.02 \pm .07$  HOLE.

10 "DIM XXX" TO BE DETERMINED BY THE CUSTOMER.

11 CONNECTOR KEEP-OUT ZONE.

12  $\Delta/D$  SYMBOL WILL BE NEXT TO ANY DIMENSION, VIEW, OR NOTE WHICH HAS BEEN MODIFIED WITH THE CURRENT DRAWING REVISION.

13. THE VOID CORING IN BETWEEN POWER MODULES, SIGNAL MODULES AND END MODULES ARE OPTIONAL AND THE SHAPE MAY BE DIFFERENT FOR OPTIMIZING THE MODING PROCESS THE VOID CORING WILL NOT EFFECT TO PRODUCT FUNCTION

mat'l code		SEE NOTE		tolerances unless otherwise specified		CUSTOMER		 www.fciconnect.com	
lir	ecm no.	dr	date	linear	$0.X \pm 0.5$	COPY		title	
D					$0.XX \pm 0.25$	projection		3P + 52S + 2P + 3ACP	
				angles	$0.XXX \pm 0.10$			VERTICAL PRESS-FIT RECEPT	
					$0^\circ \pm 2^\circ$			product family	
				dr	LH	12/23/04	PwrBlade		code
				enrg	LH	12/23/04	size		213
				chr	VICTOR LIN	12/23/04	dwg no		sheet
				appd	JOSEPH HSIA	12/23/04	A 51940-113		4
sheet index		revision sheet		scale		1:1			

A

A

B

B