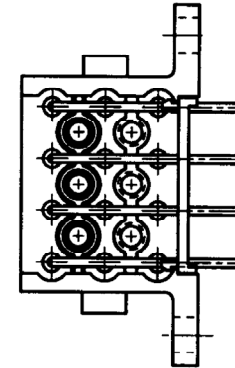
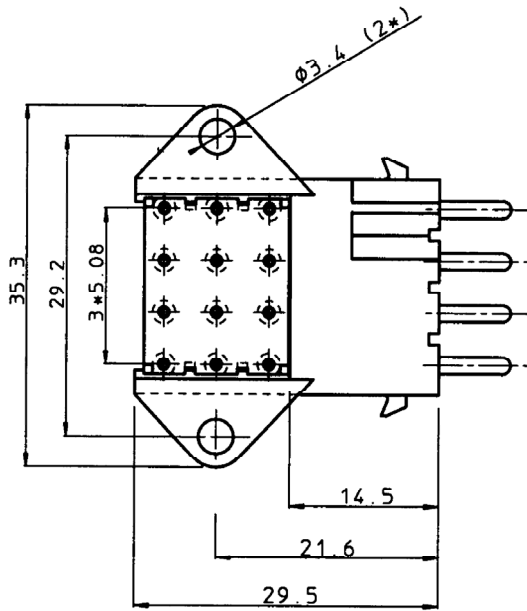
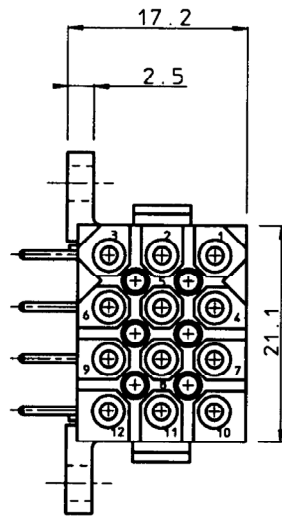
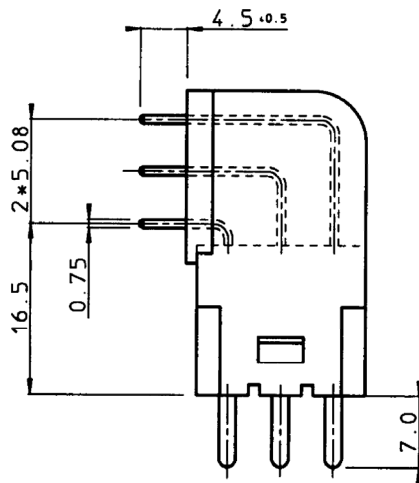
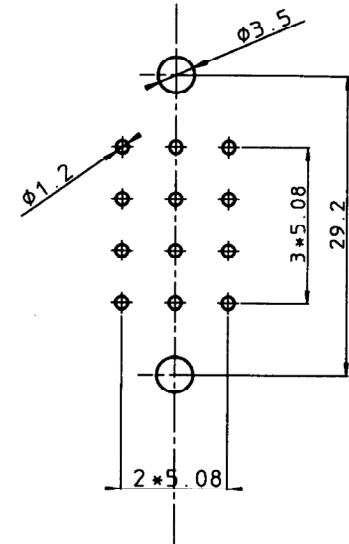


|          |    |    |    |    |    |    |    |    |    |    |    |    |    |    |    |    |    |    |    |    |    |    |    |    |    |    |    |    |    |    |    |
|----------|----|----|----|----|----|----|----|----|----|----|----|----|----|----|----|----|----|----|----|----|----|----|----|----|----|----|----|----|----|----|----|
| GEN. ST. | 01 | 02 | 03 | 04 | 05 | 06 | 07 | 08 | 0D | 50 | 60 | 70 | 80 | 90 |    |    |    |    |    |    |    |    |    |    |    |    |    |    |    |    |    |
| INT. ST. | 10 | 11 | 12 | 13 | 14 | 18 | 20 | 31 | 32 | 33 | 34 | 38 | 39 | 40 | 42 | 43 | 44 | 45 | 46 | 48 | 56 | 70 | 72 | 73 | 75 | 76 | 81 | 82 | 83 | 84 | 88 |

| REV. | DATE     | DESCRIPTION                    | BY   | C'K'D' |
|------|----------|--------------------------------|------|--------|
| 01   | 21.09.89 | ALIGNMENT PLATE LAYOUT CHANGED | E.C. |        |
| 02   | 17-1-92  | DISCRIMINATION HOLES ADDED     | M.B. |        |
| 03   | 13-02-96 | CONVERSION ME10                | K.N. |        |



RECOMMENDED P.C. BOARD HOLE LAYOUT



**MATERIAL :**

BODY : POLYESTER 30% GLASSFILLED , UL94V-0, COLOUR : BLACK  
CONTACTS : BRASS, GOLD OR TIN PLATED

**PERFORMANCE CHARACTERISTICS :**

OPERATING TEMPERATURE : -55°C TO 125°C  
INSULATING RESISTANCE : 5000 M $\Omega$  MIN.  
TEST POTENTIAL : 2000 VAC  
CURRENT RATING : 5 AMP

**NOTES :**

- CONNECTOR SUPPLIED FULLY LOADED WITH MACHINED PIN CONTACTS.  
GOLD PLATED : SMS12GE6 ; GOLD FLASH : SMS12GE6J ; TIN PLATED : SMS12GE6T
- MATING PART SMS12P1 PLUG
- PC-BOARD THICKNESS : 3.2 MM

THIS IS OUR EXCLUSIVE PROPERTY. IT IS NOT TO BE COPIED, REPRINTED OR DISCLOSED TO A THIRD PARTY, NOR USED FOR MANUFACTURING WITHOUT OUR WRITTEN CONSENT, AND HAS TO BE RETURNED TO US IN CASE OF NO USAGE.

DIT IS ONZE EIGENDOM EN NIE MOET WERDEN, OVERNOMMEN, OVERGEHAKT, VERKOPEN, NIET VOOR FABRIKATIE GEBRUIKT WORDEN, ZONDER ONZE SCHRIFTELIJKE TOELATING. BIJ NIET GEBRUIK IS TERUGSTUURING VERPLICHT.

|   |   |                          |                     |  |
|---|---|--------------------------|---------------------|--|
| 1DEC $\pm 0.2$ 1DEC<br>2DEC $\pm 0.1$ 2DEC<br>ANGLES $\pm 1^\circ$ HOEKEN       | APPR.<br>DRAFT<br>CHECKED                           | DATE<br>29.03.89         | SIGN.<br>E. CREELLE | Q1KMATE R. ANGLED RECEPTACLE 12MALE MACH. CONTACTS |
| WE RESERVE THE RIGHT TO CHANGE DIMENSIONS OR REQUIREMENTS WITHOUT PRIOR NOTICE. | PROD. MGR.<br>PR. ENG. MGR.<br>PR. MGT. MGR.        | REFERENCES / REFERENTIES |                     | CAT. No. SMS12GE6*                                 |
| ALL DIMENSIONS IN MM  | SOURIAU<br>Route Nationale 23<br>72470 CHAMPAGNE    |                          |                     | SCALE<br>2/1                                       |
| ALLE AFMETINGEN IN MM   | BS,C ,200961,009,03<br>DRAWING No. CUSTOMER DRAWING |                          |                     |  |