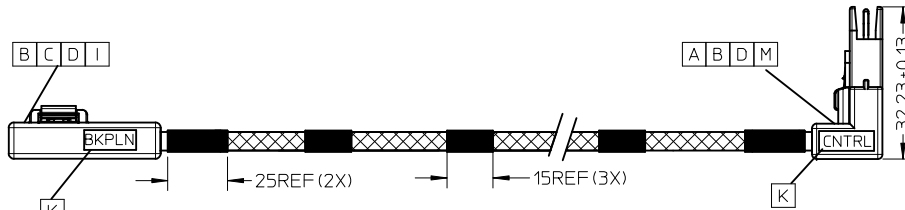
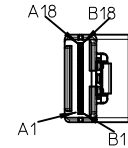
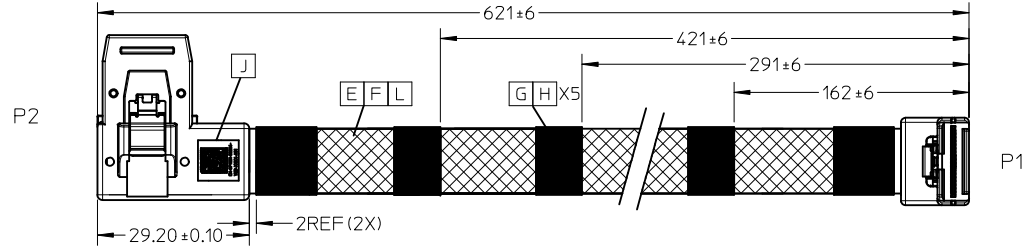
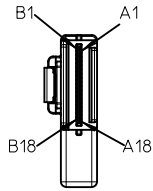
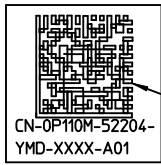
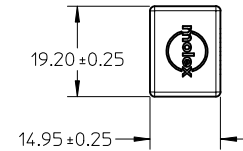
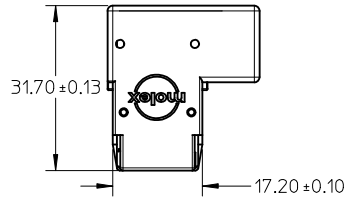


REVISIONS				
EC NO	DATE	REV	DESCRIPTION	CHANGER
NA	2010/06/10	A	INITIAL RELEASE	LUCKY
CY11-5360	2010/08/27	B	CHANGE CUSTOMER VERSION FROM 'A00' TO 'A01'(LABEL)	LUCKY



SEE NOTES 7



READING AS: CN0P110M52204YMDXXXXA01

LABEL FORMART DETAIL

IPASS™ IS A TRADEMARK OF MOLEX

ENTER DESCRIPTION EC NO: USY2011-0247 2010/10/11 DRWN: ZYU 2010/10/11 CHKD: W.LUCKY 2010/10/11 APPR: BLAU 2010/10/11	QUALITY SYMBOLS ▽=0 ◻=0	GENERAL TOLERANCES (UNLESS SPECIFIED)		DIMENSION STYLE MM ONLY		SCALE ---	DESIGN UNITS METRIC	THIRD ANGLE PROJECTION			
		4 PLACES ± --- ± ---	3 PLACES ± --- ± ---	2 PLACES ± --- ± ---	1 PLACE ± --- ± ---	ANGULAR ± --- °	DRAWN BY ZYU	DATE 2010/10/11	TITLE 36CKTIPASS RT ANG RT EXIT- RT ANG .621M		
		DRAFT WHERE APPLICABLE MUST REMAIN WITHIN DIMENSIONS					CHECKED BY W.LUCKY	DATE 2010/10/11	MOLEX INCORPORATED		
		MATERIAL NO. 1110964003					APPROVED BY BLAU	DATE 2010/10/11	DOCUMENT NO. SD-111096-4003	SHEET NO. 1 OF 3	

F

E

D

C

B

A

F

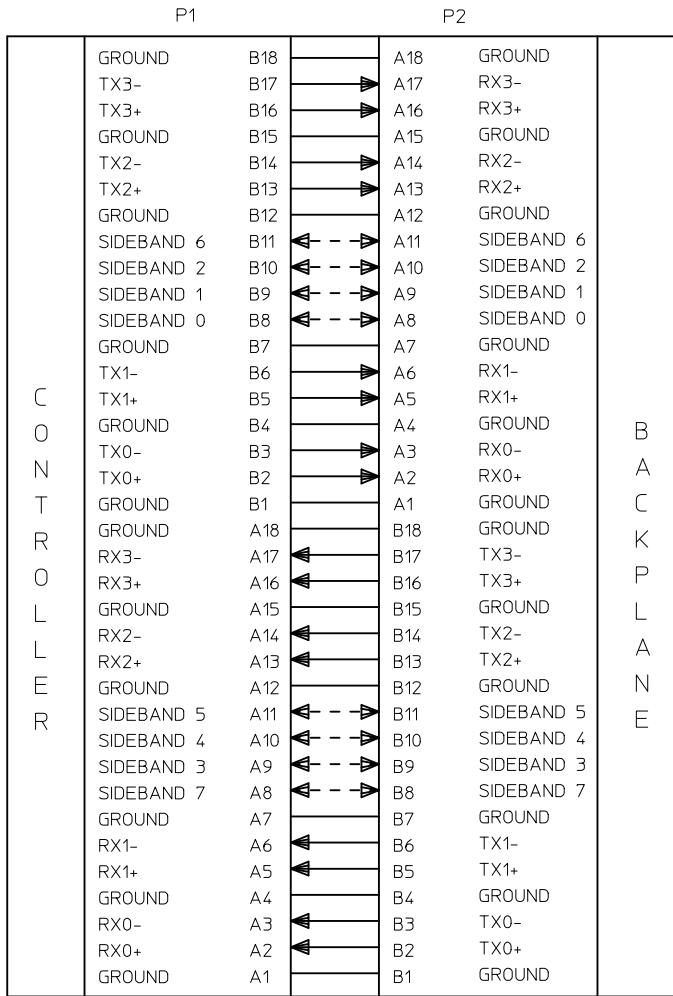
E

D

C

B

A



NOTE:
1. ALL SIGNAL GROUNDS ARE BUSSED IN PCB.

TM
IPASS IS A TRADEMARK OF MOLEX.

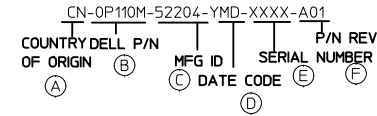
ITEM	DESCRIPTION	L (mm)	QTY.
M	lpass R/A Latch		1PCS
L	1P*30AWG:SHLD:FEP:BU:0.90*2.21MM:Twin-ax	600REF	8PCS
K	Blank label 5x10mm Thermal Transfer		2PCS
J	Blank Label 0.375"*0.375" Brady# B-423		1PCS
I	PCBfor lpass 36CKT R/A Right FR406		1PCS
H	HST F 10MM 125C (UL) BLK	A/R	5PCS
G	KUNJIE ACETATE CLOTH TAPE 12MM BLACK	A/R	5PCS
F	Braid sleeving OD:9.5mm Black HF	576REF	1PCS
E	8C*30AWG:TS:GY:P=1.0MM:UL2651	600REF	1PCS
D	PE G812 LDPE NATURAL		A/R
C	lpass Latach(Local vender)		1PCS
B	PBT POLYESTER 30% GF BLACK UL94V-0		A/R
A	PCB for 36ckt Latch Inside		1PCS

ENTER DESCRIPTION EC NO: USY2011-0247 DRWN:ZYYU 2010/10/11 CHKD:W.LUCKY 2010/10/11 APPR:BLAU 2010/10/11	QUALITY SYMBOLS ▽=0 ◻=0	GENERAL TOLERANCES (UNLESS SPECIFIED)		DIMENSION STYLE MM ONLY		SCALE ---	DESIGN UNITS METRIC	THIR D ANGLE PROJECTION			
		4 PLACES ± --- ± ---	3 PLACES ± --- ± ---	2 PLACES ± --- ± ---	1 PLACE ± --- ± ---	ANGULAR ± ---°	DRAWN BY ZYYU	DATE 2010/10/11	TITLE 36CKTIPASS RT ANG RT EXIT- RT ANG .621M		
		DRAFT WHERE APPLICABLE MUST REMAIN WITHIN DIMENSIONS					CHECKED BY W.LUCKY	DATE 2010/10/11	APPROVED BY BLAU		
		MATERIAL NO. 1110964003		DOCUMENT NO. SD-111096-4003		SHEET NO. 2 OF 3					

NOTES

1. IPASS INNERMOLD WITH PE RESIN;
IPASS OUTERMOLD WITH PBT RESIN;
2. THIS PRODUCT MUST MEET EU CHEMICAL SUBSTANCE SPECIFICATION FOR PRODUCTS(EU 2002/95/EC RoHS).
3. FOR IPASS END ASSEMBLY PLS REFERS TO E-74562-010 FOR DETAIL.
4. THE PRODUCT ELECTRICAL PERFORMANCE AND MECHANICAL PERFORMANCE REFER TO SAS 2.0 INDUSTRIAL STANDARD
5. MECHANICAL PERFORMANCE REFER TO PS-75783-001.
6. RECOMMENDED MINIMUM BEND RADIUS IS 28MM.
7. TEXT NEED USE FONT ARIAL AND THE TEXT SHOULD BE 3MM MIN.
8. LABEL DETAIL
 - 8.1 FOR LABEL DETAIL PLEASE REFER TO DELL SPECIFICATION NUMBER: 13190 REV. A28-00 TYPE W
 - 8.2 LABEL FORMART: CN-0P110M-52204-YMD-XXXX-A01
 - 8.3.TEXT NEED USE FONT VERDANA AND THE TEXT SHOULD BE 3PT MINIMUM.
9. CABLES-REFERENCE DOCUMENTS
 - DN362 SPEC.ENG.STD.DFE
 - 6T198 SPEC.DFE, RESTRICTED-MTL
 - 13190 SPEC, SPLR, BRCD, LBL,(USE IF SHIPPED DIRECTLY TO DELL)
 - ENG0000116 DOC, PROC, CABLE, ENG
 - ENG0000117 SPEC, PRCS, QUAL, CBL, ELEC
 - ENG0000121 DOC, PROC, PPAP, CBL, ENG
 - ASME Y14.5M-1994 DIMENSIONING AND TOLERANCING

PS:
DELL LABEL SPEC(13190 A28-00) EXTRACT
EVERY SECTION SEE DETAIL REMARK:



- (A) ORIGINAL COUNTRY
- (B) DELL P/N
- (C) MFG ID
- (D) DATE CODE

1.FIRST CHARACTER IS YEAR CODE: LAST NUMBER OF THE YEAR.
2.SECOND CHARACTER IS MONTH CODE. SEE CHART.

JAN	FEB	MAR	APR	MAY	JUN	JUL	AUG	SEP	OCT	NOV	DEC
1	2	3	4	5	6	7	8	9	A	B	C

3.3RD CHARACTER IS DAY CODE: 1ST -- 9TH = 1 -- 9 AND 10ST -- 31ST
= A -- V.

- (E) SERIAL NUMBER.
XXXX (DELL SERIAL NUMBER): SUPPLIERS WILL BE ALLOWED THE USE OF CHARACTERS 0-9, A-0IN THE FIRST POSITION OF THE SEQUENCE NUMBER, WITH NO RESTRICTIONS ON THE 2NDTHROUGH 4TH POSITIONS PROVIDED THAT EACH SEQUENCE NUMBER IS INDEED UNIQUE.
- (F) P/N REV

ENTER DESCRIPTION EC NO: USY2011-0247 DRWN:ZYU 2010/10/11 CHKDW:LUCKY 2010/10/11 APPR:BLAU 2010/10/11	QUALITY SYMBOLS ▽=0 ◻=0	GENERAL TOLERANCES (UNLESS SPECIFIED)		DIMENSION STYLE MM ONLY		SCALE ---	DESIGN UNITS METRIC	THIRD ANGLE PROJECTION		
			mm	INCH	DRAWN BY ZYU	DATE 2010/10/11	TITLE 36CKTIPASS RT ANG RT EXIT- RT ANG .621M			
		4 PLACES	± ---	± ---	CHECKED BY W.LUCKY	DATE 2010/10/11	MOLEX INCORPORATED DOCUMENT NO. SD-111096-4003 SHEET NO. 3 OF 3			
		3 PLACES	± ---	± ---	APPROVED BY BLAU	DATE 2010/10/11				
2 PLACES	± ---	± ---	MATERIAL NO. 1110964003		THIS DRAWING CONTAINS INFORMATION THAT IS PROPRIETARY TO MOLEX INCORPORATED AND SHOULD NOT BE USED WITHOUT WRITTEN PERMISSION					
1 PLACE	± ---	± ---	DRAFT WHERE APPLICABLE MUST REMAIN WITHIN DIMENSIONS							
ANGULAR ±---°										