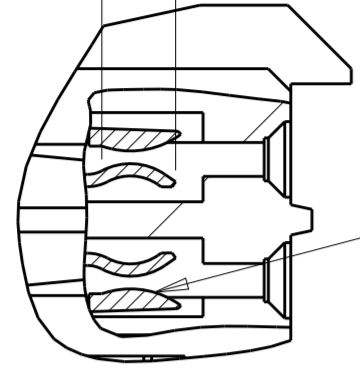


THIS DRAWING IS UNPUBLISHED. RELEASED FOR PUBLICATION 2000  
 © COPYRIGHT 2000 ALL RIGHTS RESERVED.

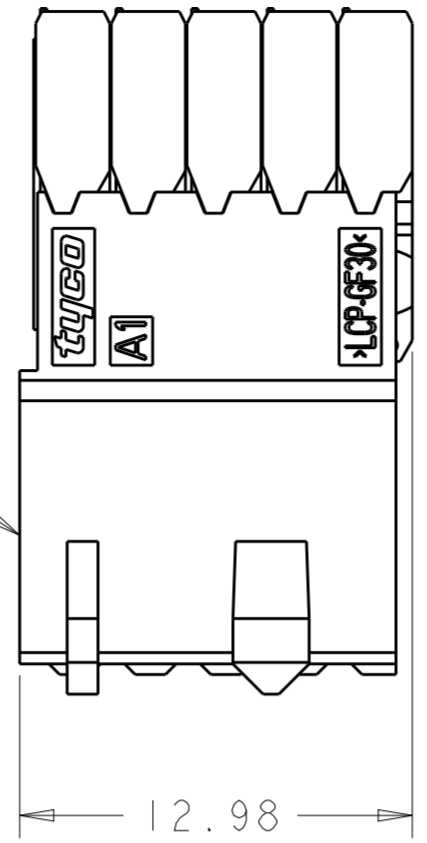
LOC	DIST	REVISIONS					
AD	00	P	LTR	DESCRIPTION	DATE	DWN	APVD
		B		REVISED PER ECO-18-020072	25DEC2018	R.L	H.L

CONTACT AREA TYPICAL



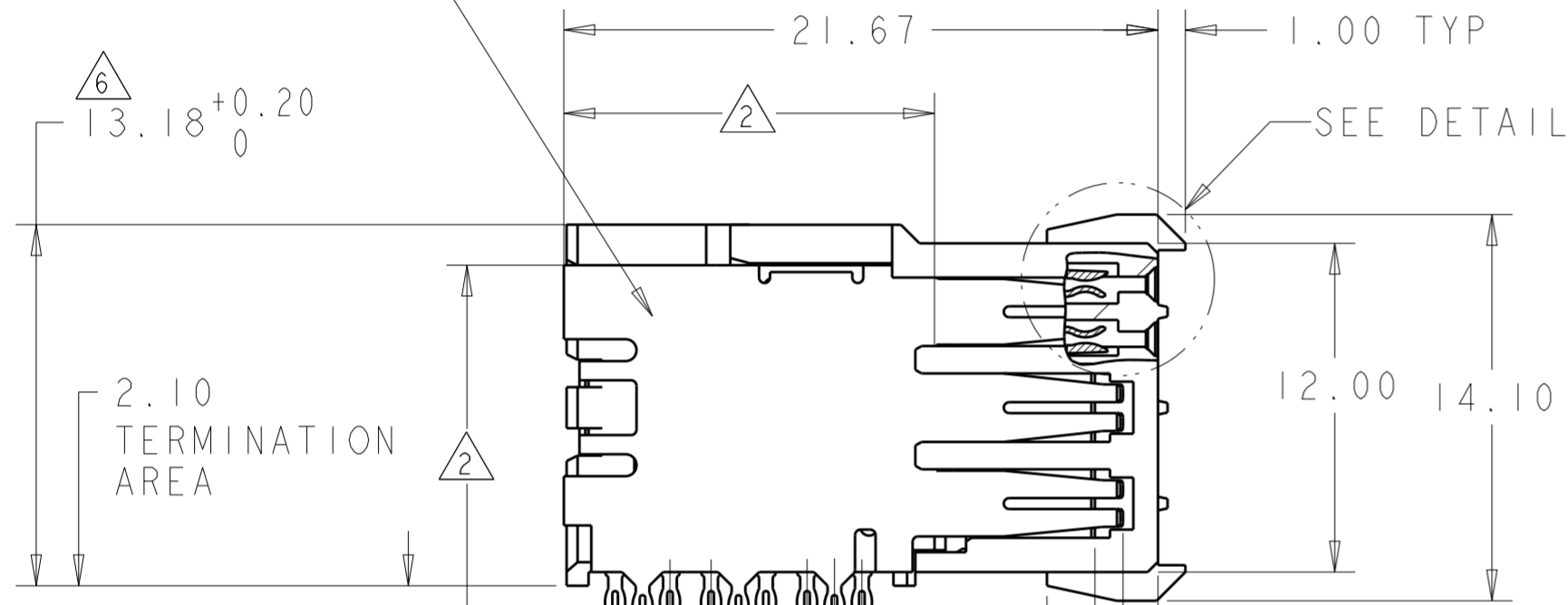
CONTACT QTY: 30

HOUSING QTY: 1

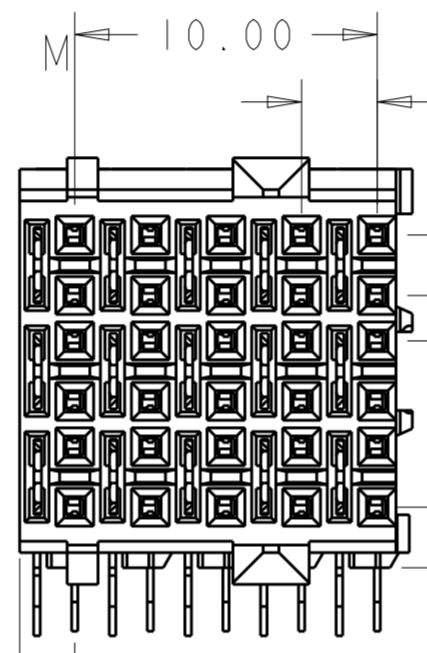


SHIELD QTY: 5

DETAIL M SCALE 8:1



CONTACT AREA TYPICAL



CONTACT MATING AREA MEETS THE PERFORMANCE REQUIREMENTS OF TE CONNECTIVITY PRODUCT SPECIFICATION 108-1957; BASED ON TELCORDIA GR-1217-CORE, APPLICATIONS IN UNCONTROLLED ENVIRONMENTS.

0.76µm MIN TIN OVER 1.27µm MIN NICKEL.

MATERIAL:  
 CONTACT - COPPER ALLOY  
 SHIELD - PHOSPHOR BRONZE  
 HOUSING AND CHICKLET - GLASS FILLED POLYESTER

REFERENCE APPLICATION SPEC 114-13020 FOR RECOMMENDED PLATED THRU HOLE DIAMETER AND PLATING THICKNESS.

DATUM AND BASIC DIMENSION ESTABLISHED BY CUSTOMER.

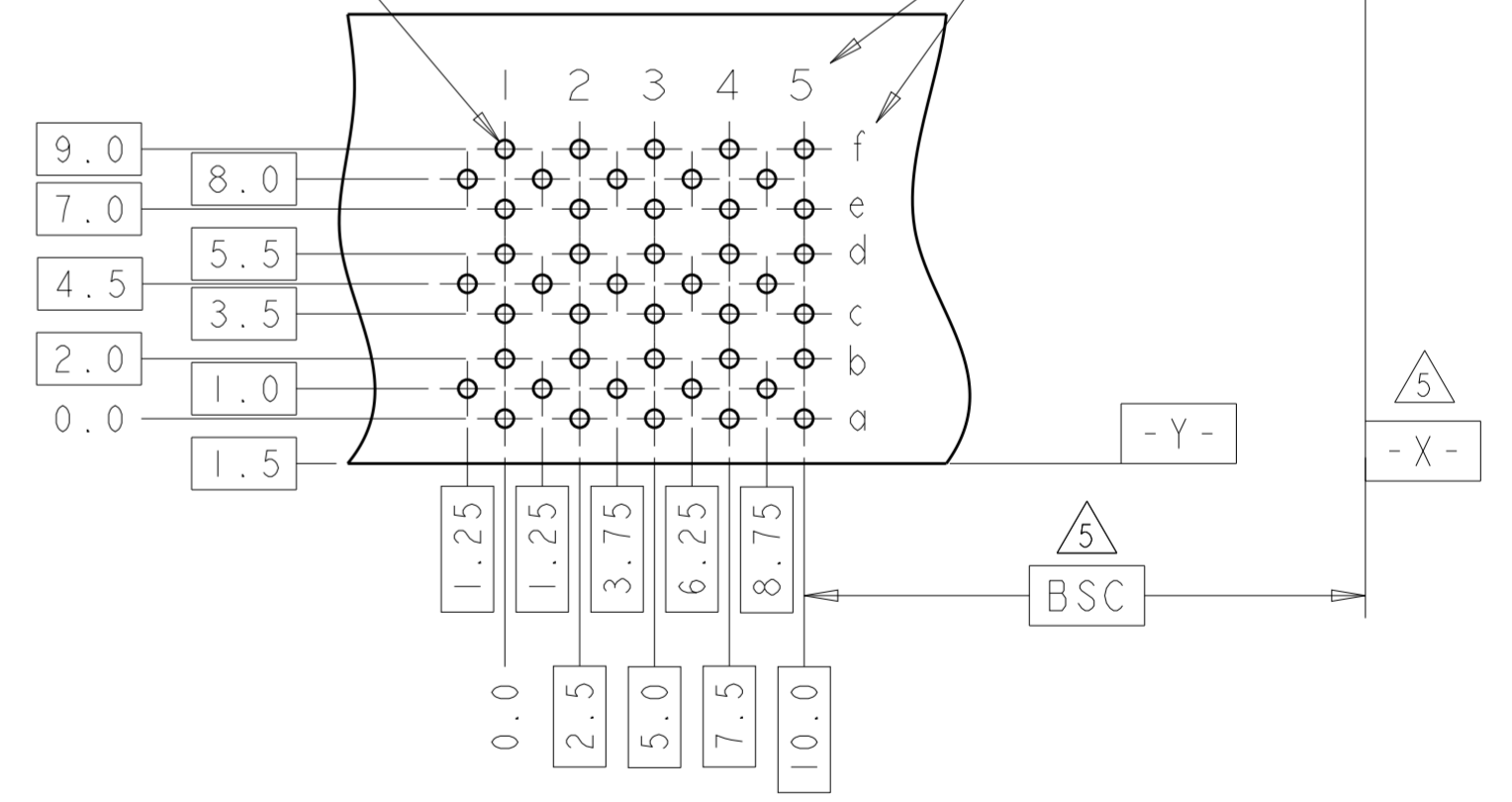
SEATING HEIGHT TO BOARD SURFACE.

CONTACT AREA LUBRICATED WITH BELLCORE APPROVED LUBRICANT. TECHNICAL REFERENCE: GR-1217-CORE, ISSUE 1, NOVEMBER 1995.

DATE CODE

PART NUMBER

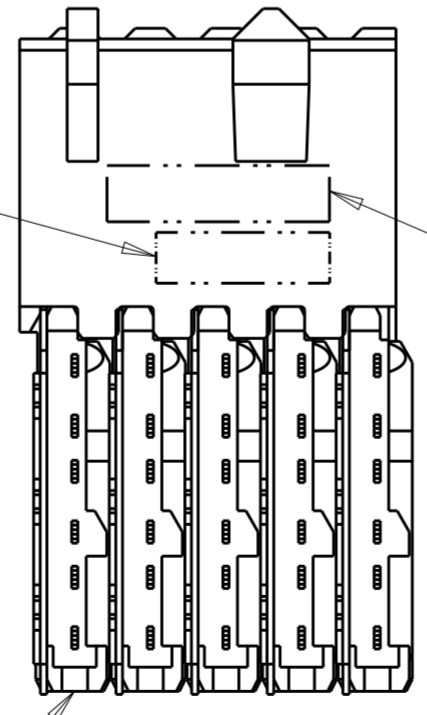
PLATED THRU HOLE TYP LOCATION REF



RECOMMENDED PRINTED CIRCUIT BOARD LAYOUT  
 COMPONENT SIDE OF PRINTED CIRCUIT BOARD

120978-1  
 PART NUMBER

CHICKLET QTY: 5



LOCATION REF

THIS DRAWING IS A CONTROLLED DOCUMENT.		DWN B. CARBO 19SEP05	TE Connectivity	
DIMENSIONS: mm		CHK R. PATTERSON 19SEP05		
TOLERANCES UNLESS OTHERWISE SPECIFIED:		APVD R. PATTERSON 19SEP05	NAME RECEPTACLE ASSEMBLY, 30 POSITION 6 ROW, DUAL BEAM, Z-PACK HS3	
0 PLC ±		PRODUCT SPEC 108-1957	SIZE A2	
1 PLC ±		APPLICATION SPEC 114-13020	CAGE CODE 00779	
2 PLC ±0.13		WEIGHT -	DRAWING NO C-120978	
3 PLC ±0.050		RESTRICTED TO		
4 PLC ±		SCALE 4:1		
ANGLES ±		SHEET 1 OF 1		
FINISH		REV B		
SOLDER TAIL: 2		CUSTOMER DRAWING		
CONTACT: 1				