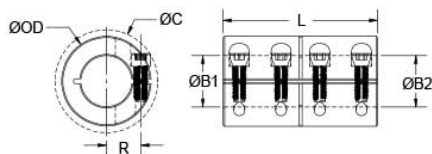




CLX-10-10-F

Ruland CLX-10-10-F, 5/8" x 5/8" Rigid Coupling, Black Oxide Steel, One-Piece Clamp Style, 1 5/16" OD, 2" Length




Description

Ruland CLX-10-10-F is a one-piece rigid coupling with 0.6250" x 0.6250" bores, 1 5/16" OD, and 2" length. It has precision honed bores to ensure they are collinear and do not introduce misalignment or vibration into the system making it suitable for high precision servo applications as well as shaft to shaft connections. Proprietary Nypatch® anti-vibration coating on hardware allows for even seating of the screw, repeated screw installations, prevents galling, and maintains high holding power. It eliminates the need to treat screws upon receipt greatly reducing installation time. Forged screws test beyond ANSI standards to ensure maximum holding power. Tightly controlled bore tolerance of +.002"/+.0005" is maintained. CLX-10-10-F is made from 1215 lead-free steel with a proprietary black oxide finish that produces a fine glossy finish while increasing holding power and resisting corrosion. It is machined from solid bar stock that is sourced exclusively from North American mills and is RoHS3 and REACH compliant. CLX-10-10-F is manufactured in our Marlborough, MA factory under strict controls using proprietary processes.

Product Specifications

Bore (B1)	0.6250 in	Small Bore (B2)	0.6250 in
B1 Max Shaft Penetration	1.000 in	B2 Max Shaft Penetration	1.000 in
Outer Diameter (OD)	1 5/16 in	Bore Tolerance	+0.0020 in / +0.0005 in
Length (L)	2 in	Clearance Diameter (C) MAX	1.514 in
Recommended Shaft Tolerance	+0.0000 in / -0.0005 in	Forged Clamp Screw	#10-32
Screw Material	Alloy Steel with Nypatch®	Hex Wrench Size	5/32 in
Screw Finish	Black Oxide	Seating Torque	76 lb-in
Screw Location (R)	0.484 in	Number of Screws	4 ea
Rated Torque	1,600 lb-in	Moment of Inertia	0.1451 lb-in ²
Maximum Speed	4,000 RPM	Full Bearing Support Required?	No
Nypatch® Anti-Vibration Hardware?	Yes	Precision Honed Bores?	Yes
Zero-Backlash?	Yes	Material Specification	1215 Carbon Steel Bar
Temperature	-40°F to 350°F (-40°C to 176°C)	Finish Specification	Hot Process Black Oxide, Impregnated with Naphthenic Oil, Centrifugally Dried
Manufacturer	Ruland Manufacturing	Country of Origin	USA
Weight (lbs)	0.549100	UPC	634529003640
Tariff Code	8483.60.8000	UNSPC	31163009

Note 1 Performance ratings are for guidance only. The user must determine suitability for a particular application.

Prop 65  **WARNING** This product can expose you to the chemical Ethylene Thiourea, known to the State of California to cause cancer and birth defects or other reproductive harm. For more information go to www.P65Warnings.ca.gov.

Installation Instructions

1. Align the CLX-10-10-F one-piece rigid coupling on the two shafts to be connected. There should be no misalignment.
2. Tighten the Nypatch® screws in two stages, starting with the inside screws. Using a 5/32 in torque wrench, tighten the inside screws to 38 lb-in which is half the recommended seating torque. Repeat for the outside screws, again tightening to half of the recommended seating torque.
3. Tighten the screws to the full recommended seating torque of 76 lb-in following the same pattern, starting with the inside screws first.

