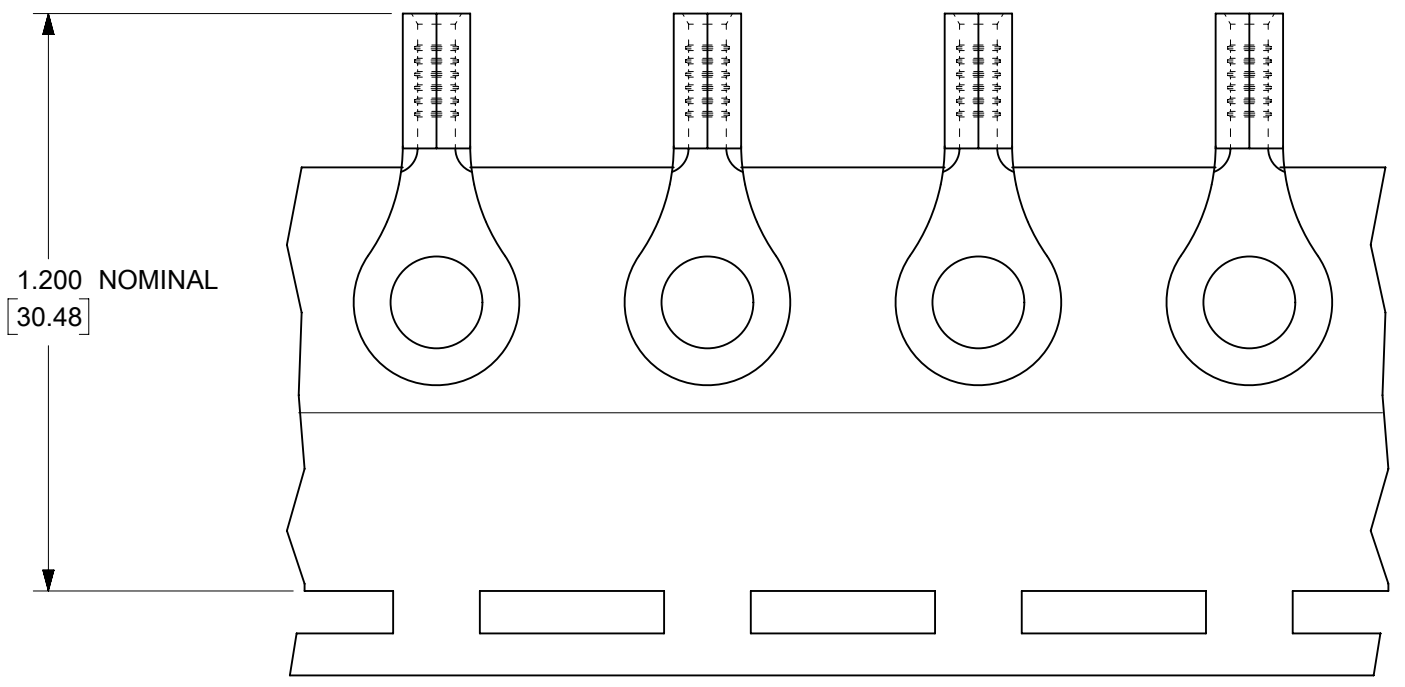
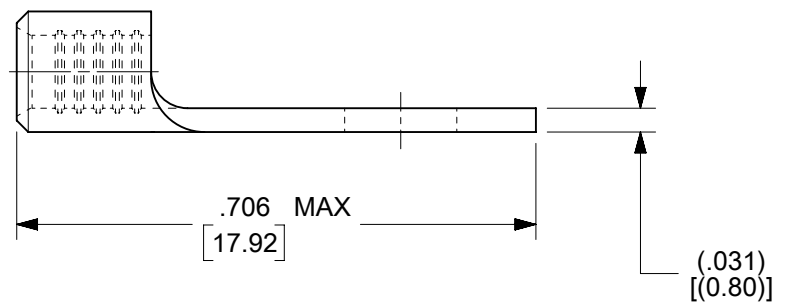
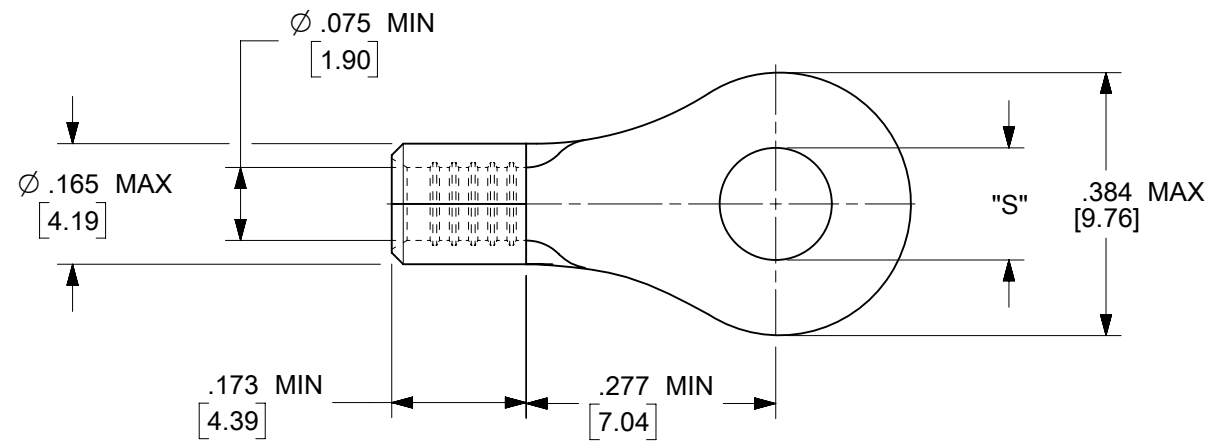


MATERIAL NO.	ENG. NO.	STUD SIZE	"S" MAX	DESCRIPTION
192030388	19203-0388	10	.212/5.38	LOOSE
192030052	B-S-137-10T	10	.212/5.38	TAPE

(E1)



PARTS ON TAPE

- NOTES:
1. MATERIAL: STEEL
 2. WIRE SIZE: 16-14 AWG (1.5-2.5 MM²)
 3. FINISH: NICKEL PLATED WITH OPTIONAL COPPER FLASH UNDERPLATING, IS ALLOWED FOR IMPROVED ADHESION.
 4. PART IS ROHS COMPLIANT.
 5. AMBIENT OPERATING TEMPERATURE UP TO 900 °F (483 °C).

(E1)

THIS DRAWING CONTAINS INFORMATION THAT IS PROPRIETARY TO MOLEX ELECTRONIC TECHNOLOGIES, LLC AND SHOULD NOT BE USED WITHOUT WRITTEN PERMISSION									
FUNCTIONAL SYMBOLS	DIMENSION UNITS	SCALE	CURRENT REV DESC: REMASTERED IN ECTR AND UPDATED NOTE						
	IN/MM	4:1	<p>EC NO: 708789 DRWN: PAWANC 2022/05/10 CHKD: DMYRICK 2022/06/01 APPR: JMACNEIL 2022/06/02</p> <p>INITIAL REVISION: DRWN: DMYRICK 2005/04/06 APPR: RDEROSS 2005/04/06</p>						
GENERAL TOLERANCES (UNLESS SPECIFIED)									
	MM INCH								
4 PLACES	±								
DIVISIONAL SYMBOLS	3 PLACES	±	<p>PRODUCT CUSTOMER DRAWING</p> <p>DOCUMENT NUMBER: SD-19203-017 DOC TYPE: PSD DOC PART: 001 REVISION: E1</p> <p>MATERIAL NUMBER: SEE CHART CUSTOMER: GENERAL MARKET SHEET NUMBER: 1 OF 1</p>						
	2 PLACES	±							
	1 PLACE	±							
	0 PLACES	±							
ANGULAR TOL		± °	<p>DRAFT WHERE APPLICABLE MUST REMAIN WITHIN DIMENSIONS</p> <p>THIRD ANGLE PROJECTION</p> <p>DRAWING: B-SIZE SERIES: 19203</p>						