

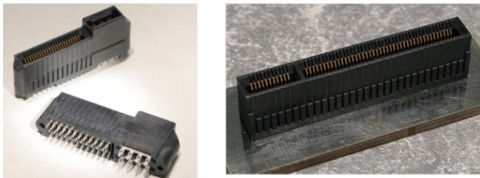


# Product Change Notification (PCN)

PCN Number	509285	Date Issued	August 18, 2020
Reason for Change	Equipment Transfer, Production Transfer or Rearrangement		
Change Type Description	This letter is to inform you that production of the part(s) identified in this notice is being moved to a different production location. No changes will be made to the product as a result of this move.		
Assessment of Change	Product will be fully qualified before it is shipped. Qualification reports will be available after below listed date		
Internal Molex Qualification Date	November 30, 2020		
Sample Availability Date (Changed Part)	November 30, 2020		
Planned Implementation Date	February 28, 2021		
Method of Identifying Change	Date code		

## Before Change

### ■ Impacted Products Pictures



## After Change

### Overview

- Change Description:
  - PCN will apply to Edgeline connector.
  - The Purpose is to transfer the production line from current Molex LRC factory (U.S)/ Molex Nogales to Chengdu based factory.
- Product Impact: no impact to fit, form or function
- Part Number Impact: see attached impacted parts list
- Qualification Reports and samples available upon request after the date shown above

DEFERRED



## Product Change Notification (PCN)

---

You may address any technical inquiries regarding this PCN by sending E-mail to [pcn\\_coordinator@molex.com](mailto:pcn_coordinator@molex.com) or your Local Sales Engineer.

Note: While responding, please retain "**PCN Notification:509285**" in the e-mail Subject line for faster response.

RELEASED

**Molex, LLC**  
2222 Wellington Court  
Lisle, IL 60532  
TEL: 630-969-4747  
[www.molex.com](http://www.molex.com)

PCN #	Molex Part #
509285	755940000
509285	762910068
509285	762910068
509285	768611000
509285	1706732108