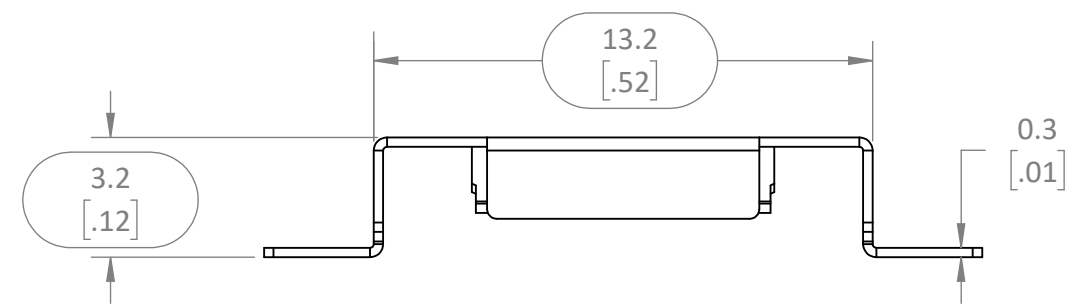
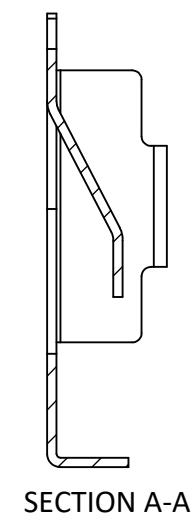
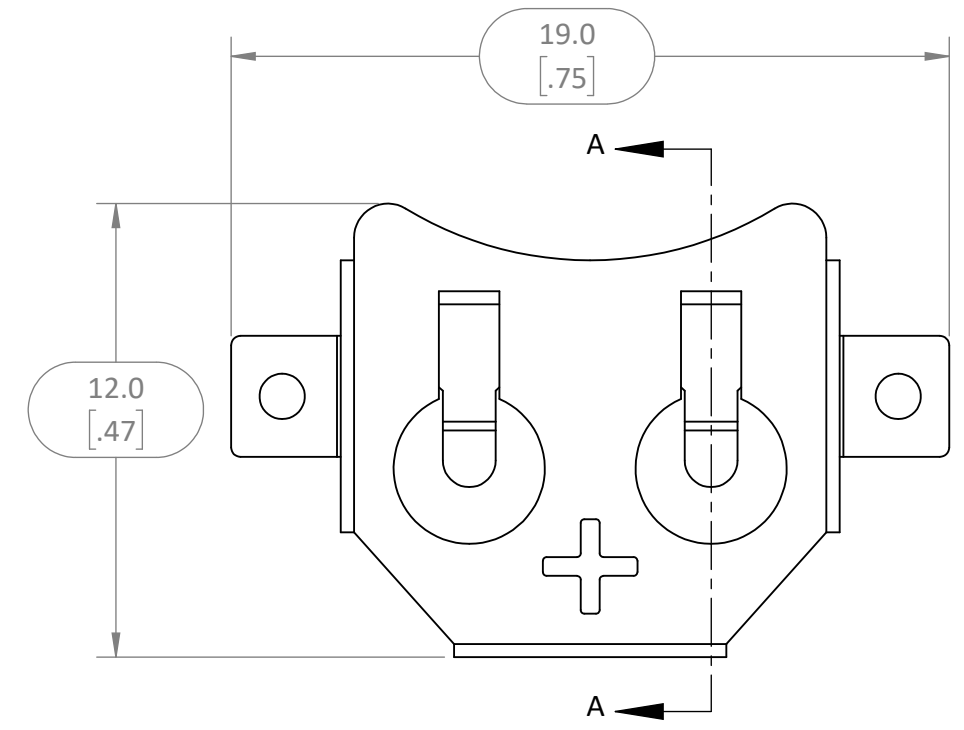


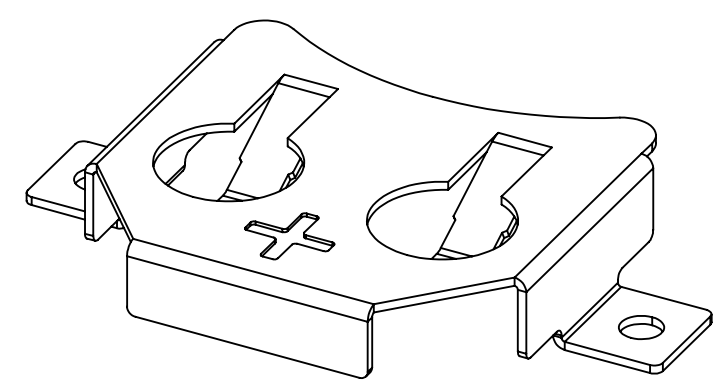
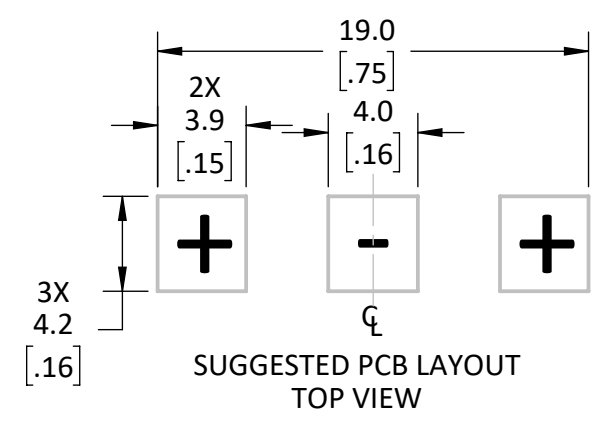
8 7 6 5 4 3 2 1

D  
C  
B  
A

D  
C  
B  
A



- NOTES: (UNLESS OTHERWISE SPECIFIED)
1. ALL DIMENSIONS ARE IN MILLIMETERS [IN].
  2. DIMENSIONS APPLY AFTER FINISHING.
  3. MANUFACTURE TO BE COMPLIANT WITH EU RoHS DIRECTIVE, USE MATERIALS THAT DO NOT CONTAIN REACH SUBSTANCES OF VERY HIGH CONCERN >1000ppm, AND USE DRC CONFLICT-FREE SOURCED MATERIALS.
  4. FINISH BRIGHT NICKEL PLATED FREE OF CONTAMINANTS
  5. PACKAGE MATERIAL IN REEL IAW ASTM EIA-481F
    1. PITCH: 16mm
    2. TAPE SIZE: 32MM
    3. EMBOSSED CARRIER



8 7 6 5 4 3 2 1 LDCDFB\_B

<p>WARNING: THIS DRAWING CONTAINS PROPRIETARY INFORMATION THAT IS THE SOLE PROPERTY OF LINX TECHNOLOGIES, AND SHALL BE TREATED AS SUCH. NO DISCLOSURE OR REPRODUCTION OF THIS DOCUMENT IS PERMITTED, IN WHOLE OR IN PART, WITHOUT THE EXPRESS WRITTEN PERMISSION OF LINX TECHNOLOGIES OR ITS DESIGNATED AGENTS.</p>		<p><b>Linx</b> 159 ORT LANE MERLIN, OR 97532</p>	
MATERIAL: CuSnP	INTERPRET DIMENSIONS AND TOLERANCES PER ASME Y14.5.	<p>TITLE: <b>BATTERY HOLDER CR1220 CELL SURFACE MOUNT</b></p>	
WEIGHT:	.X ±.2 .XX ±.10 .XXX ±.050	PROJECTION: 	SIZE <b>B</b>
FINISH: Ni	DRAWN: JHAGER ENGR: DASARATHAN	DT: 5/24/22 DT: 5/24/22	DWG. NO. BAT-HLD-007-SMT-TR
		SCALE: 5:1	DO NOT SCALE DRAWING
			SHEET 1 OF 1