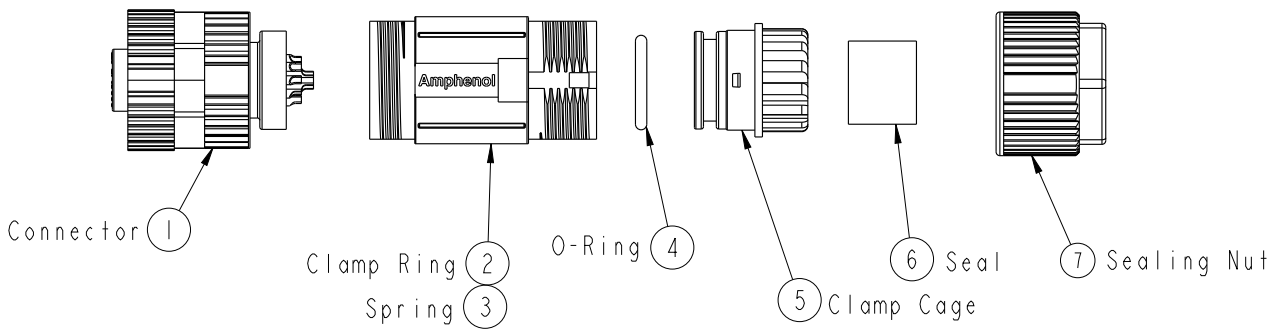


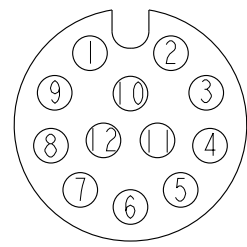
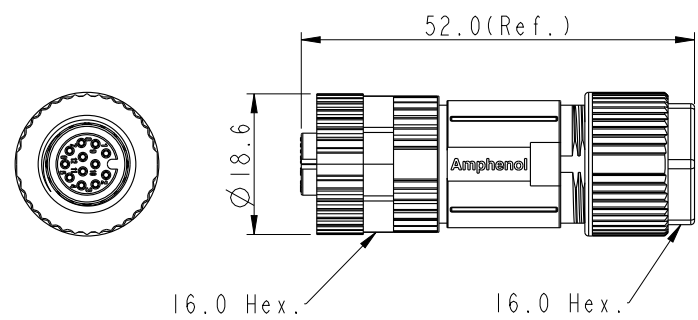
THIS DOCUMENT IS SUBJECT TO CHANGE WITHOUT NOTICE. IT IS CONFIDENTIAL AND A PROPERTY OF AMPHENOL LTW. DISCLOSURE TO THIRD PARTY HAS TO BE AUTHORIZED BY AMPHENOL LTW.

REV.	ECN NO.	DATE	SIGN	DESCRIPTION
A	Initial Release	2015/05/05	Lu Di	Change Rev.01 To Rev.A
B	LEN1670563	2016/07/22	Yulong_wang	Change the Note.

**ALTW**  
**CONFIDENTIAL**  
**2016-07-22**  
**R&D DEPT.**



**ALTW**  
**DCC. DEPT.**  
**CONFIDENTIAL**  
**2016.07.26**  
**ISSUED**



Pin Assignments  
 Front View

- Note:
- \*  $\varnothing$  Important Dimension To Check.
  - \* Waterproof Rate: IP67
  - \* Housing: Nylon, Black.
  - \* Clamp Cage: Nylon, Black.
  - \* Female Pin: Copper Alloy, Gold Plate 0.05um
  - \* Nut: Zinc Alloy, Nickel Plated.
  - \* O-Ring: Silicone, Grey.
  - \* Clamp Ring: Zinc Alloy, Nickel Plated.
  - \* Sealing Nut: Zinc Alloy, Nickel Plated.
  - \* Seal: Silicone, Grey.
  - \* Seal For Cable OD:  $\varnothing$ 4.0mm~ $\varnothing$ 7.5mm
  - \* Applicable Wire gauge (Stranded wire cross section)  
 26AWG ~ 24AWG
  - \* Mating Recommended tightening torque:  
 3~4 kgf.cm / 0.29~0.39 N.m
  - \* Sealing-Nut Recommended tightening torque:  
 4~6 kgf.cm / 0.39~0.59 N.m
  - \* Detailed applicable wire specifications may vary depending on the actual wire construction.

UNIT: mm		TITLE		ITEM NO.		DRAWN BY		DATE	
		M12 Shielded Assy 12Pin F Conn. F Pin		MSAS-12BFFA-SL7001		Yulong_wang		2016-07-22	
TOLERANCE		SCALE	SIZE	SHEET	DWG NO.	CHECKED BY	DATE		
.X ±0.25		1:1	A4	1 OF 1	MSAS-12BFFA-SL7001	Jinhai	2016-07-22		
.XX ±0.1		REV.	WC-REV.		CUSTOMER	APPROVED BY	DATE		
.XXX ±0.05		B	A.2		ALTW	Jerry	2016-07-22		
ANGLES ±1°		(CC): Inspection item		Amphenol LTW 安費諾亮泰企業股份有限公司					