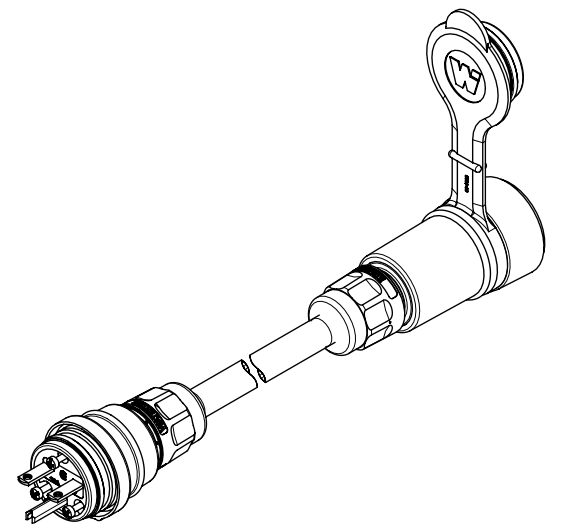
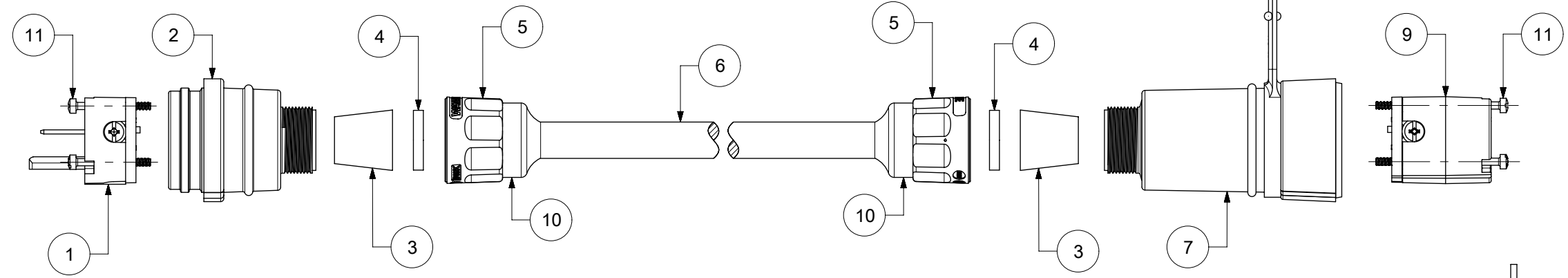
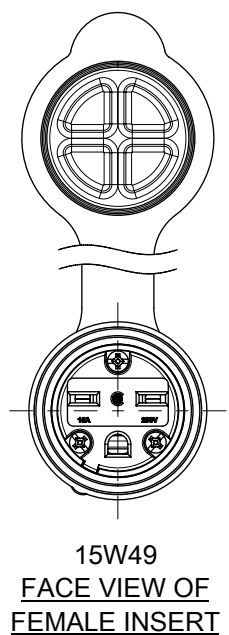
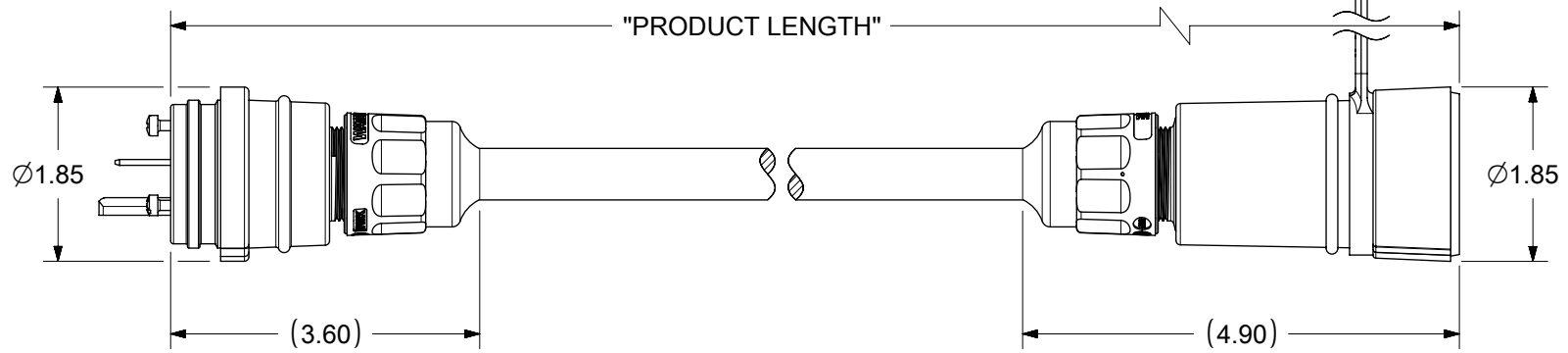
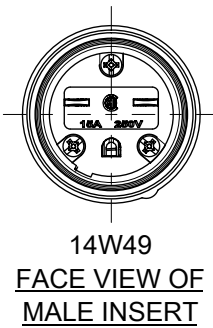


MATERIAL NO.	ENGINEERING NO.	DESCRIPTION	PRODUCT LENGTH
1301430157	14W49A143	14W49 25FT 14-3-SO 15W49	25 FT +12.0/-0.0 IN
1301430159	14W49B143	14W49 50FT 14-3-SO 15W49	50 FT +24.0/-0.0 IN
1301430160	14W49D143	14W49 100FT 14-3-SO 15W49	100 FT +24.0/-0.0 IN

NEMA 6-15; 15A 250V; 2-POLE/3-WIRE



ITEM NO.	DESCRIPTION	MATERIAL	QTY.
1	MALE INSERT ASSY.	NYLON, POLYCARBONATE, BRASS PLATING - NICKEL OR ZINC	1
2	WATERTITE - MALE HUSK	SILICONE	1
3	GROMMET	RUBBER	2
4	FRICITION RING	NYLON	2
5	COMPRESSION NUT YELLOW	NYLON	2
6	YELLOW SOOW CORD	COPPER WIRE	1
7	WATERTITE - FEMALE HUSK	SILICONE	1
8	CLOSURE CAP YELLOW	SILICONE	1
9	FEMALE INSERT ASSY.	NYLON, POLYCARBONATE, BRASS PLATING - NICKEL OR ZINC	1
10	CABLE GLOVE	SILICONE	2
11	RETAINING SCREW	STAINLESS STEEL	6



SYMBOLS	THIS DRAWING CONTAINS INFORMATION THAT IS PROPRIETARY TO MOLEX ELECTRONIC TECHNOLOGIES, LLC AND SHOULD NOT BE USED WITHOUT WRITTEN PERMISSION	
	DIMENSION UNITS	SCALE
▽ = 0	INCH	NTS
▽ = 0	GENERAL TOLERANCES (UNLESS SPECIFIED)	
▽ = 0	ANGULAR TOL ± °	
▽ = 0	4 PLACES	±
▽ = 0	3 PLACES	±
▽ = 0	2 PLACES	±
▽ = 0	1 PLACE	±
▽ = 0	0 PLACES	±
■ = 0	DRAFT WHERE APPLICABLE MUST REMAIN WITHIN DIMENSIONS	
▽ = 0	THIRD ANGLE PROJECTION	DRAWING
SERIES		130143
MATERIAL NUMBER		SEE TABLE
CUSTOMER		GENERAL MARKET
SHEET NUMBER		1 OF 1

EC NO: 620468	DRWN: PPURSUTANDEL 2019/07/08	CHK'D: DNGUYEN62 2019/08/07	APPR: HKNEELAND 2020/05/19
INITIAL REVISION:			
DRWN: PPURSUTANDEL 2019/07/08		APPR: HKNEELAND 2020/05/19	
DOCUMENT NUMBER		DOC TYPE	DOC PART
1301430157		PSD	000
REVISION		A	

**molex**

WATERTITE CORDSET  
PLUG AND CONNECTOR WITH CORD

PRODUCT CUSTOMER DRAWING