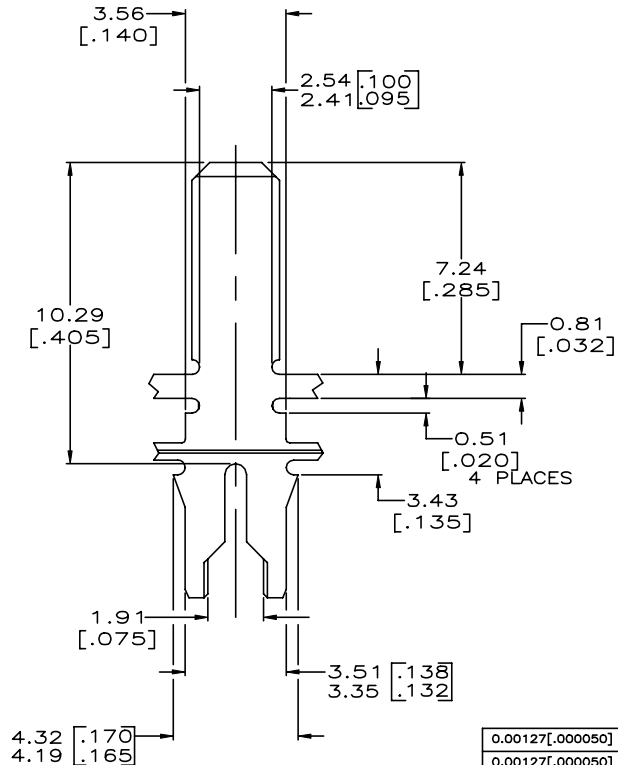
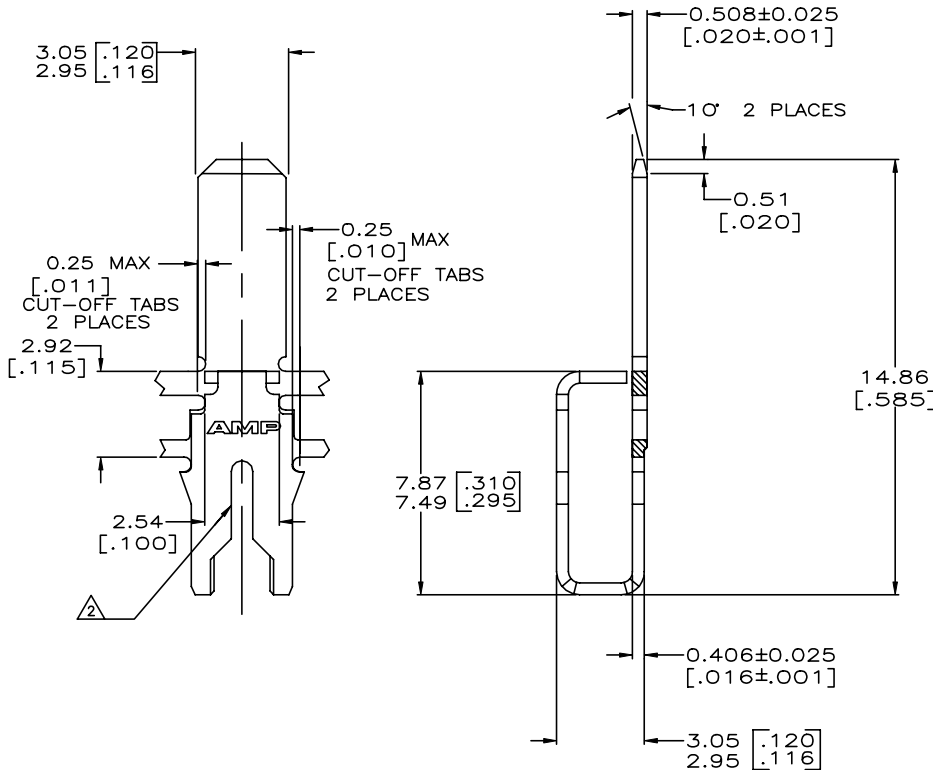
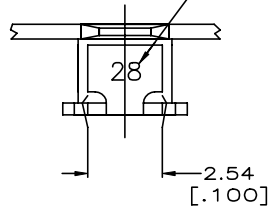


THIS DRAWING IS UNPUBLISHED. RELEASED FOR PUBLICATION  
 © COPYRIGHT BY TYCO ELECTRONICS CORPORATION. ALL RIGHTS RESERVED.

LOC		DIST		REVISIONS			
P	LTR	DESCRIPTION	DATE	DN	APVD		
AF	50	E2	REVISED PER ECR-20-100944	12FEB2021	JA	TD	

- 1 CONTINUOUS STRIP ON REELS WITH TERMINALS LOCATED ON 5.59±0.08 [.220±.003] CENTERS.
- ② SLOT TERMINATES A SINGLE 0.8–0.9mm<sup>2</sup> [#18] AWG TIN PLATED SOLID, FUSED STRANDED OR STRANDED (7, 16, OR 19 STRANDS) WIRE WITH CROSS-LINKED POLYETHYLENE INSULATION, 2.26[.089] MAX DIA.
- ③ MTA PRODUCT SPEC IS 108-1051 MAG-MATE PRODUCT SPEC IS 108-2012
- ④ MTA APPLICATION SPEC IS 114-1020 MAG-MATE APPLICATION SPEC IS 114-2046
- ⑤ TERMINALS ARE STRESS RELIEVED
- ⑥ PRELIMINARY - NOT FOR PRODUCTION.

IDENTIFICATION NUMBER 28 FOR LEAD WIRE RANGE



0.00127[.000050] MIN NICKEL	REVERSE	⑥	63974-4
0.00127[.000050] MIN NICKEL	STANDARD	⑥	63974-3
OBSOLETE 0.002032[.000080] MIN TIN	REVERSE		63974-2
OBSOLETE 0.002032[.000080] MIN TIN	STANDARD		63974-1
	FINISH	REELING	PART NUMBER

THIS DRAWING IS A CONTROLLED DOCUMENT.

DIMENSIONS: mm [INCHES]	TOLERANCES UNLESS OTHERWISE SPECIFIED: 0 PLC ± - 1 PLC ± - 2 PLC ± 0.25[.010] 3 PLC ± - 4 PLC ± - ANGLES ± - FINISH SEE TABLE ⑥	DWN R.GRZYBOWSKI 9APR97 CHK M.S.FEHER 9APR97 NAME KURT A. RANDOLPH 9APR97 PRODUCT SPEC ③ APPLICATION SPEC 96-1039-111/4 WEIGHT - CUSTOMER DRAWING	TE Connectivity TAB, 3.00[.118] SERIES MTA® /MAG-MATE® SIZE A2 CAGE CODE 00779 DRAWING NO. C=63974 RESTRICTED TO - SCALE 8:1 SHEET 1 of 1 REV E2
----------------------------	--	---	---