

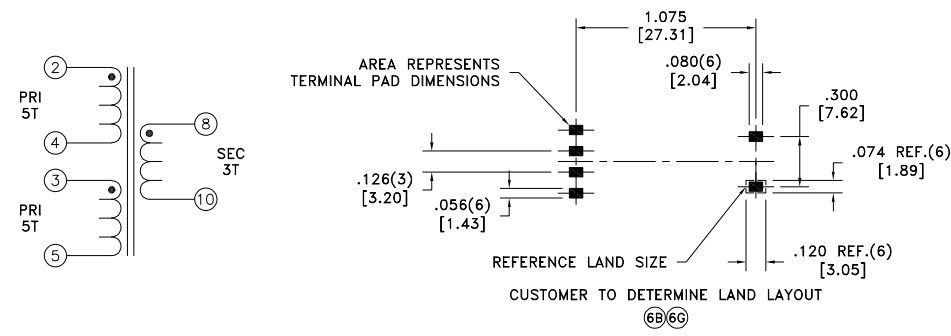
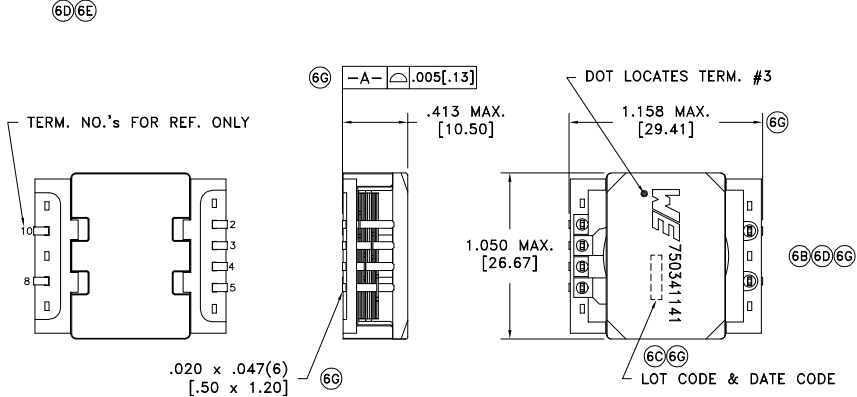
CUSTOMER TERMINAL	RoHS	LEAD(Pb)-FREE
Sn100%	Yes	Yes

more than you expect



ELECTRICAL SPECIFICATIONS @ 25°C unless otherwise noted:

PARAMETER	TEST CONDITIONS	VALUE
⑥G D.C. RESISTANCE	2-4 @20°C	7.0 mOhms max.
⑥G D.C. RESISTANCE	3-5 @20°C	7.0 mOhms max.
⑥G D.C. RESISTANCE	8-10 @20°C	4.0 mOhms max.
⑥D INDUCTANCE	2-5 tie(3+4), 100kHz, 100mVAC, Ls	410.0uH min.
⑥E LEAKAGE INDUCTANCE	2-5 tie(3+4, 8+10), 100kHz, 100mVAC, Ls	850nH max.
⑥D DIELECTRIC	2-8 tie(3+4), 2250VDC, 1 second	-
⑥G TURNS RATIO	(2-4):(8-10)	1.667:1
⑥E TURNS RATIO	(3-5):(8-10)	1.667:1

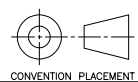


GENERAL SPECIFICATIONS:

OPERATING TEMPERATURE RANGE: -40°C to +125°C including temp rise.

⑥F VOLTAGE-TIME: 200VuS

REV.	DATE	Packaging Specifications
6G	4/23	Method: Tape & Reel
6F	2/22	PKG-0793
6E	4/20	www.we-online.com/midcom
6D	5/14	SEE REVISION SHEET FOR REVISION LEVEL



Tolerances unless otherwise specified:
 Angles: ±1° Decimals: ±.005 [.13]
 Fractions: ±1/64 Footprint: ±.005 [.13]

This drawing is dual dimensioned. Dimensions in brackets are in millimeters.

DRAWING TITLE
TRANSFORMER

eiSos p/n: 750341141



PART NO.
750341141

SPECIFICATION SHEET 1 OF 1