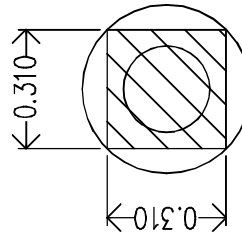
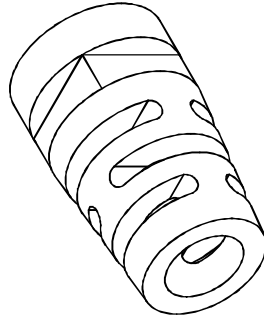
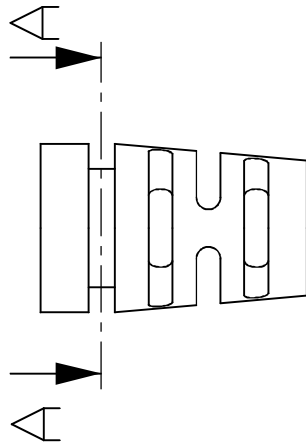
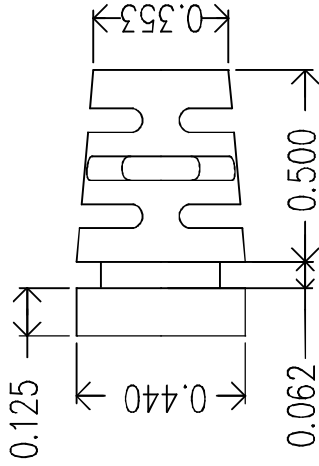
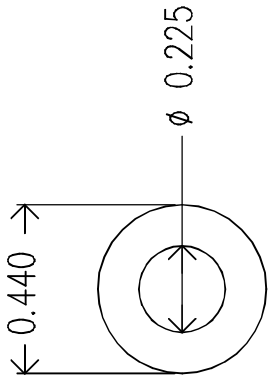


REVISIONS		DATE	APPROVED
ZONE	REV.		



Mold Material: ISC P/N: 5000214, PVC, M1472, Black, RoHS

DRAWN	NAME	DATE	ISC Engineering
R FIERRO	R FIERRO	09/03/04	4351 Schaefer Ave, Chino, CA 91710
CHECKED			Ph: 909-596-3315 Fax: 909-596-3335
ENG APPR.			www.iscengineering.com
MFG APPR.			www.overtmoldtooling.com
D.A.			
COMMENTS:			
DO NOT SCALE DRAWING			
APPLICATION			
NEXT ASSY			
USED ON			
FINISH			
MATERIAL			
TWO PLACE DECIMAL			
THREE PLACE DECIMAL			
ANGULAR: MACH ±			
FRACTIONAL ±			
DIMENSIONS ARE IN INCHES			
TOLERANCES:			
BEND ±			

Dimensions are subject to change.
 PROPRIETARY AND CONFIDENTIAL
 THE INFORMATION CONTAINED IN THIS DRAWING IS THE SOLE PROPERTY OF ISC ENGINEERING. ANY REPRODUCTION IN PART OR AS A WHOLE WITHOUT THE WRITTEN PERMISSION OF ISC ENGINEERING IS PROHIBITED.

A-A



1461080-225-B-310X310-440-0
 SIZE DWG. NO. 1467108
 SCALE: 3:1 WEIGHT: SHEET 1 OF 1