

Device connector, rear mounting - CA-12P1N8AHZ00 - 1619787

Please be informed that the data shown in this PDF Document is generated from our Online Catalog. Please find the complete data in the user's documentation. Our General Terms of Use for Downloads are valid (<http://phoenixcontact.com/download>)



Device connector for rear wall, straight, shielded: yes, SPEEDCON locking, M23, Number of positions: 12, Type of contact: Male connector, Crimp connection, Seal, axial, Central fixing



Key Commercial Data

| | |
|----------------------|----------|
| Packing unit | 1 pc |
| Custom tariff number | 85366990 |
| Country of origin | Germany |

Technical data

Temperature range

| | |
|---------------------------------|-------------------|
| Ambient temperature (operation) | -40 °C ... 125 °C |
|---------------------------------|-------------------|

Data of the insulating body

| | |
|---|--|
| Note | Order information Order crimp contacts Ø 1 mm separately |
| Coding | N |
| Insulator material | PA 66 |
| Contact connection method | Crimp connection |
| Type of contacts | Male connector |
| Number of positions | 12 |
| Contact diameter of power contacts | 1 mm |
| Nominal current per power contact at 25°C | 8 A |
| Nominal voltage, power contact | 150 V |
| Overvoltage category | II |
| Degree of pollution | 3 |

Housing data

| | |
|------------------|--|
| Housing material | Turned parts: copper zinc alloy (CuZn), die-cast parts: zinc (GD-Zn) |
| Type of locking | SPEEDCON locking |

Device connector, rear mounting - CA-12P1N8AHZ00 - 1619787

Technical data

Housing data

| | |
|--|------|
| Degree of protection (when plugged in) | IP67 |
| Thread type | M23 |

Classifications

eCl@ss

| | |
|------------|----------|
| eCl@ss 4.0 | 272607xx |
| eCl@ss 4.1 | 27260701 |
| eCl@ss 5.0 | 27143424 |
| eCl@ss 5.1 | 27143424 |
| eCl@ss 6.0 | 27143424 |
| eCl@ss 7.0 | 27440209 |
| eCl@ss 8.0 | 27440103 |

ETIM

| | |
|----------|----------|
| ETIM 3.0 | EC001121 |
| ETIM 4.0 | EC002635 |
| ETIM 5.0 | EC002061 |

UNSPSC

| | |
|---------------|----------|
| UNSPSC 6.01 | 43172015 |
| UNSPSC 7.0901 | 43201404 |
| UNSPSC 11 | 43172015 |
| UNSPSC 12.01 | 43201404 |
| UNSPSC 13.2 | 43201404 |

Approvals

Approvals

Approvals

UL Recognized / cUL Recognized / EAC

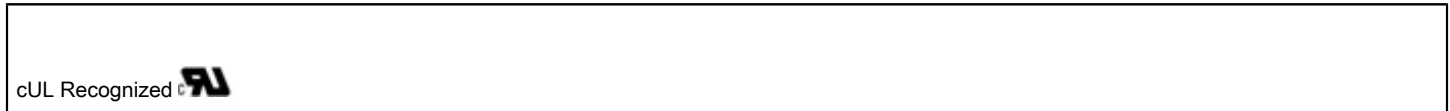
Ex Approvals

Approvals submitted

Device connector, rear mounting - CA-12P1N8AHZ00 - 1619787

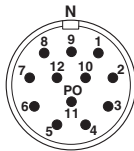
Approvals

Approval details

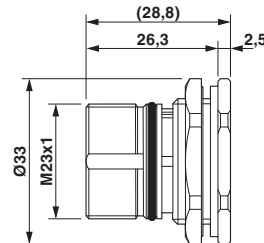


Drawings

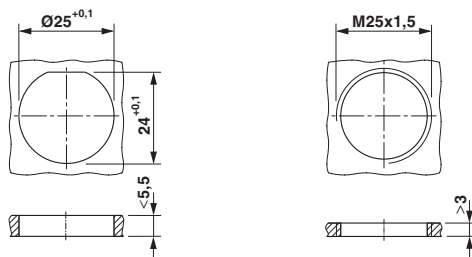
Schematic diagram



Dimensional drawing



Dimensional drawing



Installation dimensions