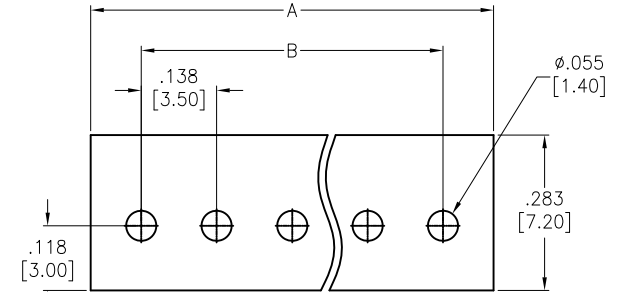
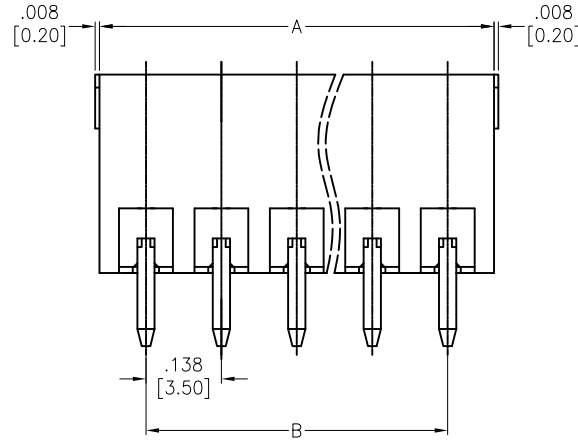
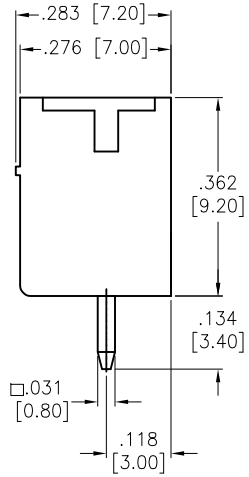
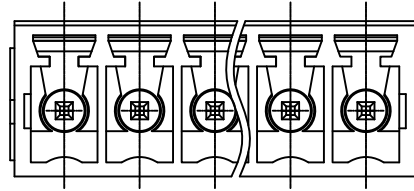
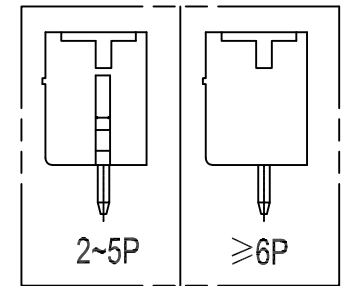


APPROVED: \_\_\_\_\_  
 DATE: \_\_\_\_\_ TITLE: \_\_\_\_\_

Rev	AWO #	Description	Date	Appr
-		RELEASED	6/13/14	
A		UPDATE SHAPE	10/27/14	AY/NP
B		ADDED SHAPE	12/22/16	AY/IC
C		UPDATE DRAWING	9/11/20	OW/CC



RECOMMENDED PCB LAYOUT



Positions: 02 thru 24  
 A= .138 [3.50] x No. of Spaces + .169 [4.30]  
 B= .138 [3.50] x No. of Spaces

SPECIFICATIONS:

Material:  
 Insulator: PA66, rated UL 94V-0  
 Insulator color: Green  
 Contact: Copper Alloy, Tin plated  
 Electrical:  
 Voltage rating: 300 V  
 Current rating: 8 A  
 Dielectric withstanding voltage: 1600V for 1 minute  
 Temperature Rating:  
 Operating temperature: -40°C to +105°C  
 Environmental:  
 Lead free, RoHS compliant.



UNLESS OTHERWISE SPECIFIED ALL DIMENSIONS ARE INCHES [MM] TOLERANCES: EXCEPT AS NOTED			
INCHES		HOLES	
.X	± .10	Ø.X	± .10
.XX	± .020	Ø.XX	± .015
.XXX	± .015	Ø.XXX	± .010
APPROVALS		DATE	
DRAWN	AY	6/13/14	
CHECKED			
APPROVED			

**ADAM TECH INTERCONNECTS**  
 909 Rahway Avenue,  
 Union, NJ 07083  
 Phone: 908-687-5000  
 Fax: 908-687-5710

TITLE TERMINAL BLOCK, STRAIGHT, .138" [3.50] PITCH			
SIZE X	PART NO. EBRA-XX-A	REV. C	
REF: S00067C	SCALE: NTS	SHEET 1 OF 1	