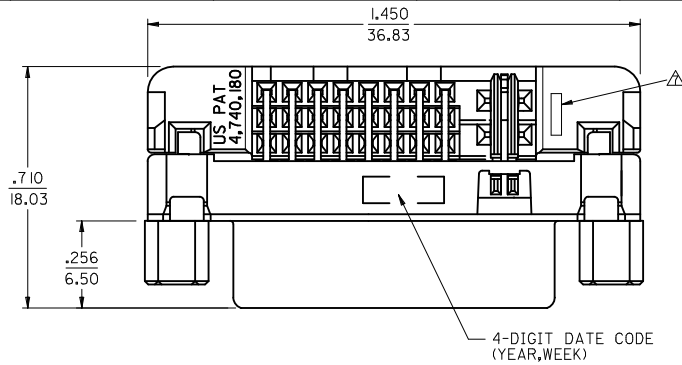
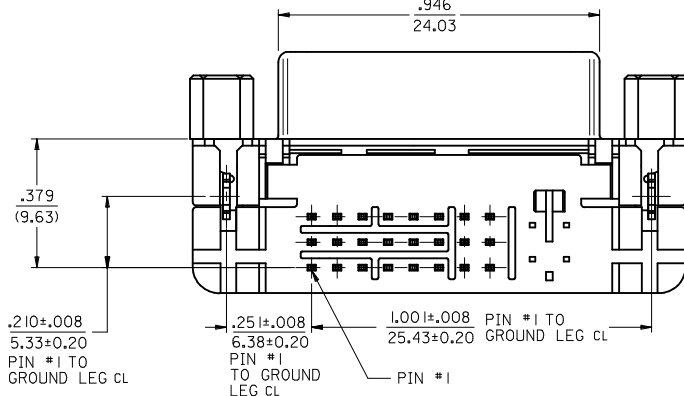
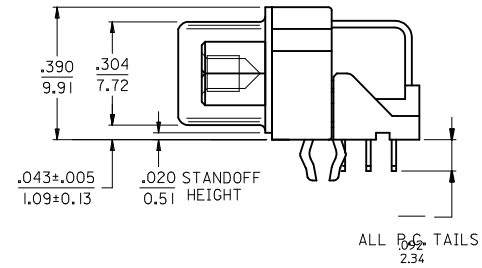
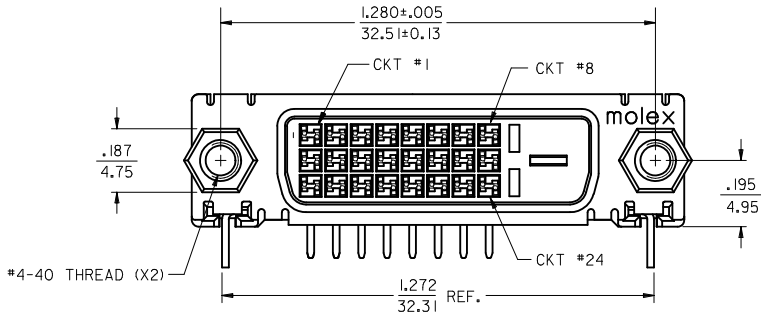
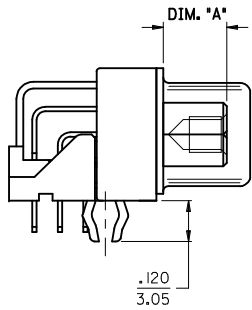


PART NUMBER	DIM *A*	PLATING OPTION
74320-9020	.187 4.75	1 (30µ Au)
74320-9024		2 (Au FLASH)
74320-9224	.236 6.00	

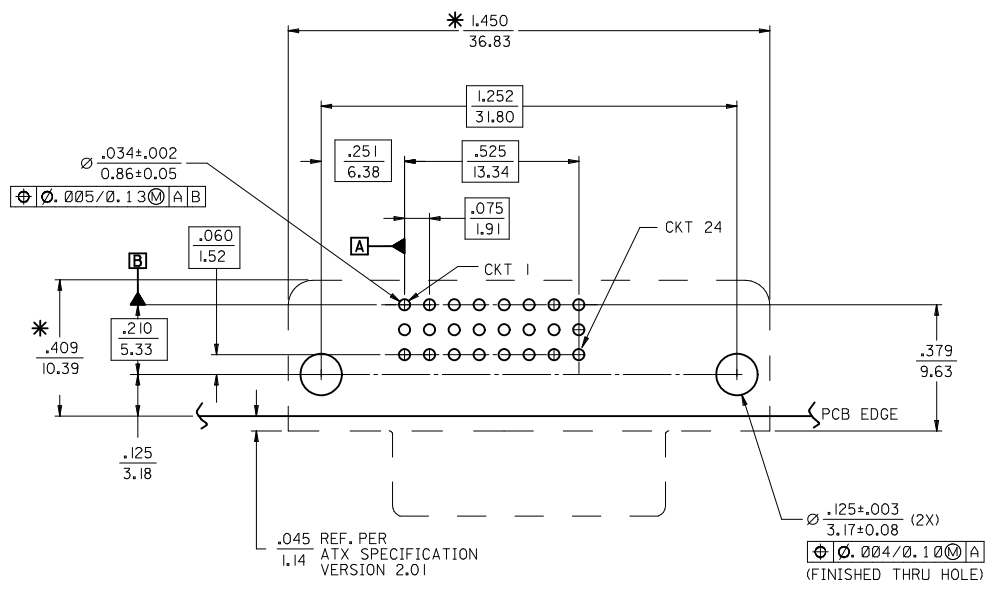


NOTES:

- MATERIALS:
    - SHIELD -- DEEP DRAW STEEL.
    - HOUSING -- GLASS FILLED POLYMER, WHITE/NATURAL, UL 94v-0.
    - TAIL ALIGNER -- GLASS FILLED POLYMER, WHITE/NATURAL, UL 94v-0.
    - CONTACTS -- COPPER ALLOY.
    - MICROCROSS GROUND -- COPPER ALLOY.
    - JACKPOSTS -- STEEL, ZINC PLATE W/CLEAR CHROMATE.
  - PLATING: SEE SHEET 2
  - PRODUCT CONFORMS TO MOLEX PRODUCT SPECIFICATION PS-74320-001.
  - SEE SHEET 2 FOR RECOMMENDED P.C.B. LAYOUT.
  - PARTS WILL BE PACKAGED IN TRAYS.
  - PRODUCT CONFORMS TO DDWG DVI SPECIFICATION, REFER TO THIS SPECIFICATION FOR CONNECTOR INTERFACE DIMENSIONS.
- △ CAVITY NO. AND MANUFACTURING PLANT CODE.

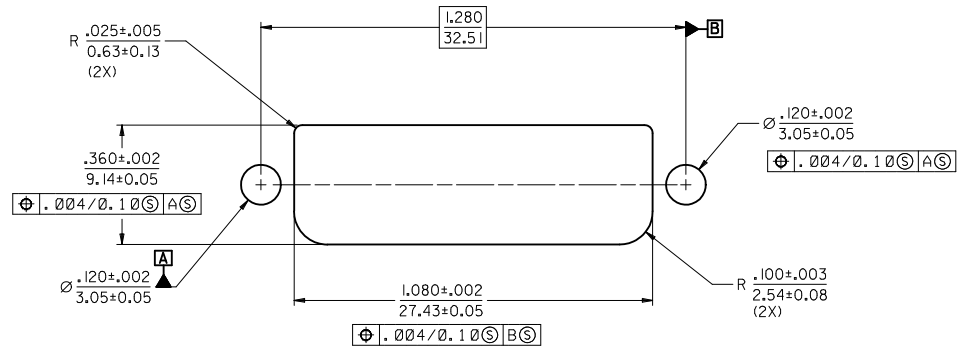


REV	DESCRIPTION	QUALITY SYMBOLS	GENERAL TOLERANCES (UNLESS SPECIFIED)		DIMENSION STYLE		SCALE	DESIGN UNITS	THIRD ANGLE PROJECTION
			mm	INCH	IN/MM		1:1	INCH	⊕
REVISE	EC NO: SH2012-0047	▽=0 ◻=0	4 PLACES	± ---	± ---	DRAWN BY	DATE	TITLE	<b>DVI-D/ATX RIGHT ANGLE RECEPTACLE CONNECTOR W/JACKPOSTS</b> <b>MOLEX INCORPORATED</b> DOCUMENT NO. <b>SD-74320-027</b>
	DRWN:XJ.SONG		3 PLACES	± ---	± .010	TMCCLELL	99/12/07		
	CHKD:XJ.SONG		2 PLACES	± 0.25	± .010	SCHMIDGA	99/12/07		
	APPR:RZHANG		1 PLACE	± 0.25	± .010	NELSON	99/12/07		
			ANGULAR ±1/2°			MATERIAL NO.			
			DRAFT WHERE APPLICABLE MUST REMAIN WITHIN DIMENSIONS		SEE TABLE		SHEET NO. 1 OF 2		
					SIZE A3		THIS DRAWING CONTAINS INFORMATION THAT IS PROPRIETARY TO MOLEX INCORPORATED AND SHOULD NOT BE USED WITHOUT WRITTEN PERMISSION		



**RECOMMENDED PCB LAYOUT**  
COMPONENT SIDE OF PCB SHOWN

\* THESE DIMENSIONS REPRESENT CONNECTOR OVERLAY ON PCB.



**RECOMMENDED PANEL CUT-OUT**  
PANEL THICKNESS: .030" - .040"

**PLATING OPTIONS:**

- PLATING OPTION #1:  
 OUTER SHIELD -- 150u"/(3.75um) MIN. BRIGHT TIN OVER 50u"/(1.27um) MIN. NICKEL OVER COPPER FLASH  
 .075"/(1.91mm) CONTACTS -- 30u"/(0.75um) MIN. SELECT GOLD AND 100u"/(2.50um) MIN. SELECT PURE TIN OVER 50u"/(1.27um) MIN. NICKEL OVERALL.
- PLATING OPTION #2:  
 OUTER SHIELD -- 150u"/(3.75um) MIN. BRIGHT TIN OVER 50u"/(1.27um) MIN. NICKEL OVER COPPER FLASH  
 .075"/(1.91mm) CONTACTS -- SELECT GOLD FLASH AND 100u"/(2.50um) MIN. SELECT PURE TIN OVER 50u"/(1.27um) MIN. NICKEL OVERALL.

SEE SHEET1 EC NO: SH2012-0047 DRWN: XJ SONG 2011/08/19 CHKD: XJ SONG 2011/08/19 APPR: RZHANG 2011/08/22	QUALITY SYMBOLS	GENERAL TOLERANCES (UNLESS SPECIFIED)	DIMENSION STYLE	SCALE	DESIGN UNITS	THIRD ANGLE PROJECTION														
	$\nabla = 0$ $\sphericalangle = 0$	<table border="1"> <thead> <tr> <th></th> <th>mm</th> <th>INCH</th> </tr> </thead> <tbody> <tr> <td>4 PLACES</td> <td>± .10</td> <td>± .004</td> </tr> <tr> <td>3 PLACES</td> <td>± .15</td> <td>± .006</td> </tr> <tr> <td>2 PLACES</td> <td>± .25</td> <td>± .010</td> </tr> <tr> <td>1 PLACE</td> <td>± 0.25</td> <td>± .010</td> </tr> </tbody> </table>		mm	INCH	4 PLACES	± .10	± .004	3 PLACES	± .15	± .006	2 PLACES	± .25	± .010	1 PLACE	± 0.25	± .010	IN/MM	1:1	INCH
	mm	INCH																		
4 PLACES	± .10	± .004																		
3 PLACES	± .15	± .006																		
2 PLACES	± .25	± .010																		
1 PLACE	± 0.25	± .010																		

DRAWN BY TMCCLELL 99/12/07	DATE 99/12/07	TITLE DVI-D/ATX RIGHT ANGLE RECEPTACLE CONNECTOR W/JACKPOSTS
APPROVED BY NELSON 99/12/07	DATE 99/12/07	MOLEX INCORPORATED MATERIAL NO. SEE SHEET1 DOCUMENT NO. SD-74320-027
DRAFT WHERE APPLICABLE MUST REMAIN WITHIN DIMENSIONS		

SIZE A3	THIS DRAWING CONTAINS INFORMATION THAT IS PROPRIETARY TO MOLEX INCORPORATED AND SHOULD NOT BE USED WITHOUT WRITTEN PERMISSION	
SHEET NO. 2 OF 2	SHEET NO. 2 OF 2	