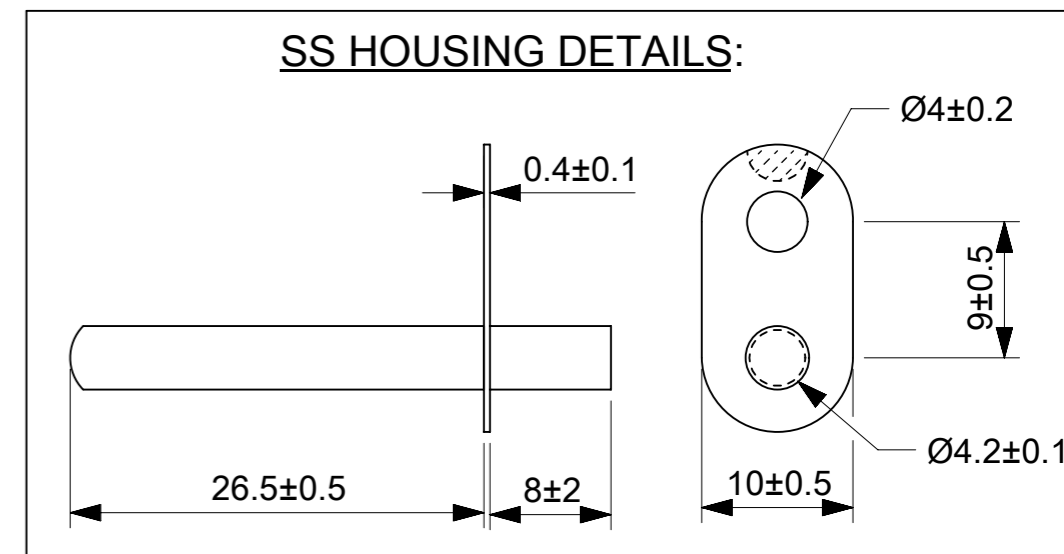


NOTES:

1. RESISTANCE @ 25°C : 10KΩ ± 1%
2. BETA VALUE (0/50°C) : 3892K ± 1%
3. OPERATING TEMPERATURE RANGE : -40°C TO +250°C.
4. THERMAL TIME CONSTANT : 15SEC IN WATER
5. VOLTAGE BREAKDOWN STRENGTH : 1500V AC FOR 3SEC.
6. INSULATION RESISTANCE : A MINIMUM OF 100MΩ @ 500VOLTS DC.
7. DISSIPATION FACTOR : 1mW/°C.
8. LASER MARKING "MOLEX-DATE CODE(MM/YY)" & "XXK(R25-value) XXXX(B-value)"



| | | | | | | | | | |
|--|---|---------------------------------------|-----------------------------|--------|-----------------|----------------|----------|----------|----------|
| FUNCTIONAL SYMBOLS | THIS DRAWING CONTAINS INFORMATION THAT IS PROPRIETARY TO MOLEX ELECTRONIC TECHNOLOGIES, LLC AND SHOULD NOT BE USED WITHOUT WRITTEN PERMISSION | | | | | | | | |
| | △/A = 0 | mm | NTS | | | | | | |
| DIVISIONAL SYMBOLS | CURRENT REV DESC: | | | | | | | | |
| | △/E = 0 | GENERAL TOLERANCES (UNLESS SPECIFIED) | | | | | | | |
| DIVISIONAL SYMBOLS | △/F = 0 | ANGULAR TOL ± ° | EC NO: 733229 | | | | | | |
| | 4 PLACES ± | | DRWN: NANDAK 2022/12/23 | | | | | | |
| | 3 PLACES ± | | CHK'D: RBBHASKAR 2022/12/23 | | | | | | |
| | 2 PLACES ± | | APPR: RBBHASKAR 2022/12/23 | | | | | | |
| | 1 PLACE ± | | INITIAL REVISION: | | | | | | |
| 0 PLACES ± | | DRWN: RAVIKM 2022/01/28 | DOCUMENT NUMBER | | | | | | |
| DRAFT WHERE APPLICABLE MUST REMAIN WITHIN DIMENSIONS | | THIRD ANGLE PROJECTION | DRAWING | SERIES | MATERIAL NUMBER | CUSTOMER | DOC TYPE | DOC PART | REVISION |
| | | ⊗ ⊚ | A3-SIZE | 218535 | 2185353619 | GENERAL MARKET | PSD | 000 | B4 |

RESISTANCE VS TEMPERATURE CHARACTERISTICS

| TEMP (°C) | Rmin(KΩ) | Rnom(KΩ) | Rmax(KΩ) |
|-----------|----------|----------|----------|
| -40 | 355.513 | 339.798 | 324.748 |
| -35 | 254.681 | 244.229 | 234.182 |
| -30 | 184.656 | 177.642 | 170.877 |
| -25 | 135.412 | 130.669 | 126.080 |
| -20 | 100.370 | 97.142 | 94.008 |
| -15 | 75.154 | 72.945 | 70.795 |
| -10 | 56.815 | 55.298 | 53.817 |
| -05 | 43.344 | 42.298 | 41.276 |
| 00 | 33.352 | 32.634 | 31.928 |
| 05 | 25.876 | 25.383 | 24.896 |
| 10 | 20.233 | 19.896 | 19.562 |
| 15 | 15.939 | 15.720 | 15.483 |
| 20 | 12.645 | 12.492 | 12.340 |
| 25 | 10.100 | 10.000 | 9.900 |
| 30 | 8.154 | 8.056 | 7.959 |
| 35 | 6.624 | 6.531 | 6.438 |
| 40 | 5.412 | 5.325 | 5.239 |
| 45 | 4.446 | 4.366 | 4.287 |
| 50 | 3.672 | 3.600 | 3.528 |
| 55 | 3.049 | 2.983 | 2.917 |
| 60 | 2.5439 | 2.4839 | 2.4250 |
| 65 | 2.1325 | 2.0784 | 2.0256 |
| 70 | 1.7957 | 1.7472 | 1.6998 |
| 75 | 1.5188 | 1.4752 | 1.4328 |
| 80 | 1.2900 | 1.2510 | 1.2130 |
| 85 | 1.1002 | 1.0651 | 1.0311 |
| 90 | 0.9420 | 0.9106 | 0.8801 |
| 95 | 0.8096 | 0.7814 | 0.7541 |
| 100 | 0.6984 | 0.6730 | 0.6486 |
| 105 | 0.6046 | 0.5818 | 0.5598 |
| 110 | 0.5252 | 0.5047 | 0.4849 |
| 115 | 0.4577 | 0.4393 | 0.4215 |
| 120 | 0.4003 | 0.3836 | 0.3676 |
| 125 | 0.3511 | 0.3360 | 0.3216 |
| 130 | 0.3089 | 0.2953 | 0.2822 |
| 135 | 0.2726 | 0.2602 | 0.2484 |
| 140 | 0.2412 | 0.2300 | 0.2193 |
| 145 | 0.2141 | 0.2039 | 0.1941 |
| 150 | 0.1905 | 0.1812 | 0.1723 |

| TEMP (°C) | Rmin(KΩ) | Rnom(KΩ) | Rmax(KΩ) |
|-----------|----------|----------|----------|
| 155 | 0.1700 | 0.1615 | 0.1534 |
| 160 | 0.1521 | 0.1443 | 0.1369 |
| 165 | 0.1364 | 0.1293 | 0.1225 |
| 170 | 0.1226 | 0.1161 | 0.1099 |
| 175 | 0.1105 | 0.1045 | 0.0988 |
| 180 | 0.0998 | 0.0943 | 0.0891 |
| 185 | 0.0903 | 0.0853 | 0.0805 |
| 190 | 0.0820 | 0.0773 | 0.0729 |
| 195 | 0.0745 | 0.0702 | 0.0662 |
| 200 | 0.0679 | 0.0639 | 0.0602 |
| 205 | 0.0620 | 0.0583 | 0.0548 |
| 210 | 0.0567 | 0.0533 | 0.0501 |
| 215 | 0.0520 | 0.0488 | 0.0458 |
| 220 | 0.0478 | 0.0448 | 0.0420 |
| 225 | 0.0440 | 0.0412 | 0.0386 |
| 230 | 0.0406 | 0.0380 | 0.0356 |
| 235 | 0.0375 | 0.0351 | 0.0328 |
| 240 | 0.0347 | 0.0324 | 0.0303 |
| 245 | 0.0322 | 0.0300 | 0.0281 |
| 250 | 0.0299 | 0.0279 | 0.0260 |

| | | | |
|--------------------|---|----------------|--|
| FUNCTIONAL SYMBOLS | THIS DRAWING CONTAINS INFORMATION THAT IS PROPRIETARY TO MOLEX ELECTRONIC TECHNOLOGIES, LLC AND SHOULD NOT BE USED WITHOUT WRITTEN PERMISSION | | |
| | DIMENSION UNITS | SCALE | CURRENT REV DESC: |
| $\nabla_A = 0$ | mm | NTS | <p>molex</p> <p>GLASS NTC MOUNTING -10K±1%,B3892,L300</p> <p>PRODUCT CUSTOMER DRAWING</p> |
| $\nabla_E = 0$ | GENERAL TOLERANCES (UNLESS SPECIFIED) | | |
| $\nabla_F = 0$ | ANGULAR TOL ± ° | | |
| DIVISIONAL SYMBOLS | 4 PLACES ± | 3 PLACES ± | |
| | 2 PLACES ± | 1 PLACE ± | EC NO: 733229 |
| | 0 PLACES ± | 0 PLACES ± | DRWN: NANDAK 2022/12/23 |
| | DRAFT WHERE APPLICABLE MUST REMAIN WITHIN DIMENSIONS | | CHK'D: RBBHASKAR 2022/12/23 |
| | THIRD ANGLE PROJECTION | | APPR: RBBHASKAR 2022/12/23 |
| | DRAWING | SERIES | INITIAL REVISION: |
| | A3-SIZE | 218535 | DRWN: RAVIKM 2022/01/28 |
| | | | APPR: RBBHASKAR 2022/02/10 |
| | MATERIAL NUMBER | CUSTOMER | DOCUMENT NUMBER |
| | 2185353619 | GENERAL MARKET | 2185353619 |
| | | | DOC TYPE DOC PART REVISION |
| | | | PSD 000 B4 |
| | | | SHEET NUMBER |
| | | | 2 OF 2 |