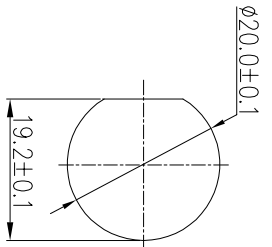
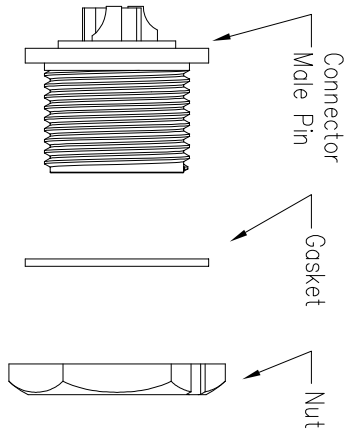
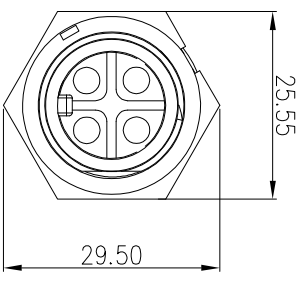
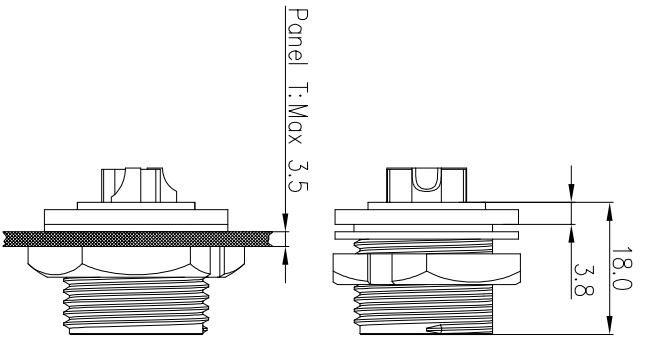


REV.	EN. NO.	DESCRIPTION	SIGN	DATE
C1	N/A	INITIAL DRAWING	Liu	2019/08/13

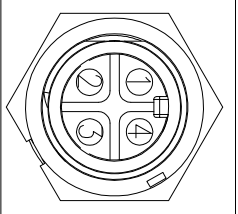


Recommended Panel Cut-Out



23XXX515-01

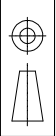
Pin Number



4 Pin

P/N: 23004515-01

Pin Assignments
Front View



UNIT:mm	
TOLERANCE	
.X	±0.25
.XX	±0.15
.XXX	±0.05
ANGLES	±1°

DESCRIPTION
Middle Series Screw Front
Mount With Male Pin

SCALE	1:1	SHEET	1	OF	1
REV	C1	SIZE	A4	* : Inspection Item	

CHOGORI

PART NO
23XXX515-01

DRAWN BY
Liu

DATE
2019/08/13

DWG NO

CHECKED BY

DATE
2019/08/13

CUSTOMER

APPROVED BY

DATE
2019/08/13

- Specification:
- 1.Operation Temperature: -45°C~105°C.
 - 2.Insulation Resistance:100MΩ at DC500V.
 - 3.Contact Resistance:<10mΩ.
 - 4.Withstand Voltage: 2000V AC
 - 5.Operating Current:15A
 - 6.Operating Voltage:AC 300V
 - 7.Waterproof Rate:IP67 (Mated)
 - 8.Housing:Nylon, Black
 - 9.Male Pin:Copper Alloy, Gold Plated
 - 10.Gasket:Silicon Gray
 - 11.Panel Nut:Nylon, Black
 - 12.Torque Rate:0.8~1.0N•m
 - 13.RoHS Compliant.
 - 14.Mating Cap P/N:806-00021-00

