

AQ Series

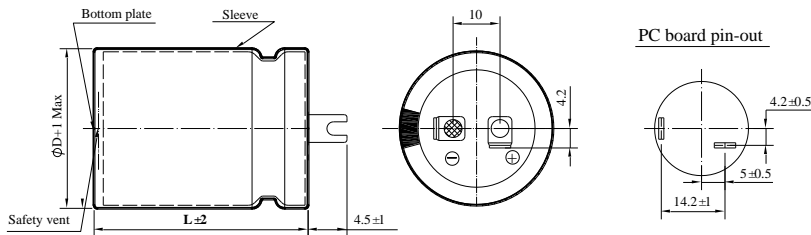
- High ripple current capability
- High stability.Suitable for LCD and PDP



◆ SPECIFICATIONS

Item	Performance Characteristics			
Category Temperature Range	-25 ~ +85°C			
Working Voltage Range	400 ~ 450Vdc			
Capacitance Range	330 ~820μF			
Capacitance Tolerance	±20% (at 25°C and 120Hz)			
Dissipation Factor (tanδ) (at 25°C, 120Hz)	Rated Voltage (V)	400	420	450
	tanδ(Max)	0.15	0.15	0.15
Leakage Current	$I = \sqrt{CV}$ or 3000μA, whichever is smaller. I : Leakage current (μA) C : Rated capacitance (μF) V : Rated voltage (V) Impress the rated voltage for 5 minutes			
Low Temperature Characteristics Impedance Ratio(MAX)	Rated voltage (V)	400	420~ 450	
	Z(-25°C)/Z(+20°C)	4	8	
Endurance	The following specifications shall be satisfied when the capacitors are restored to 25 °C after subjected to DC voltage with the rated ripple current is applied for 3,000 hours at 85 °C.			
	Capacitance change	≒ ±20% of the initial value		
	Dissipation factor(tanδ)	≒ 200% of the specified value		
	Leakage current	≒ specified value		
Shelf Life	The following requirements shall be satisfied when the capacitor are restored to 25 °C after the rated voltage applied for 1,000 hours at 85 °C without voltage applied.			
	Capacitance change	≒ ±20% of the initial value		
	Dissipation factor(tanδ)	≒ 200% of the specified value		
	Leakage current	≒ 200% of the specified value		
Others	Conforms to JIS-C-5101-4 (1998), characteristic W			

◆ DIMENSIONS (mm)



◆ PART NUMBER SYSTEM(Example : 400V 820 μF)

A Q 2 G 8 2 1 M H U 3 5 5 8

Special Request

Size code (3558:35×58)

Terminal code

Capacitance tolerance code (M: ±20%)

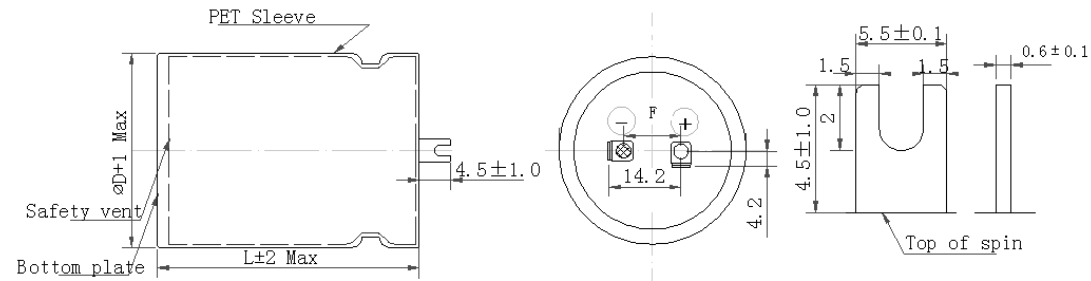
Capacitance code (820μF)

Voltage code (400V)

Series code (AQ)

Aluminum Electrolytic Capacitor

Customer	Digi-Key	SERIES	AQ	NO.:	PUBLISH DATE	2022-03-25
-----------------	-----------------	---------------	-----------	-------------	---------------------	-------------------



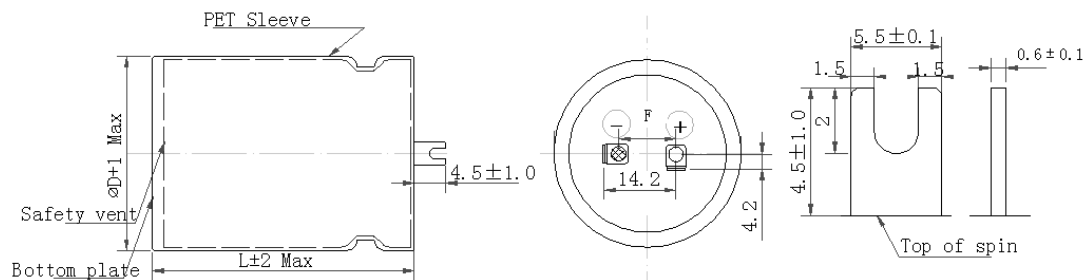
No.	CHINSAN Part No.	Customer Part No.	Capacitance (uF)	Tolerance On rated Capacitance (%)	Working Voltage (Vdc)	Surge Voltage (Vdc)	Category Temp Range (°C)	Tanδ @ 25°C (120Hz) (Max)	Leakage Current (uA) (2 min.)	Rated Ripple Current (mA rms) @ 85°C 120Hz	Rated Ripple Current (mA rms) @ 85°C 100kHz	Impedance @20°C (Ω max/ 100kHz)	Endurance @ 85°C (Hours)	Dimensions (mm)					Appearance Drawing No
														DΦ	L	a	d	F	
1	AQ2W331MHU3540		330 μF	±20%	450 V	/	-25 ~ +85	/	/	1250	/	/	3000	35	40	/	/	10	
2	AQ2W681MHU3560		680 μF	±20%	450 V	/	-25 ~ +85	/	/	2800	/		3000	35	60	/	/	10	

※Test leakage current before testing dissipation factor and capacitance during the electric characteristic test.

REMARKS:	APPROVED BY	CHECKED BY	PREPARED BY
Sleeve Color: Dark Blue.	张洪斌	曾爱娥	梁慧妍

Aluminum Electrolytic Capacitor

Customer	Digi-Key	SERIES	AQ	NO.:	PUBLISH DATE	2022-03-25
-----------------	-----------------	---------------	-----------	-------------	---------------------	-------------------



No.	CHINSAN Part No.	Customer Part No.	Capacitance (uF)	Tolerance On rated Capacitance (%)	Working Voltage (Vdc)	Surge Voltage (Vdc)	Category Temp Range (°C)	Tanδ @ 25°C (120Hz) (Max)	Leakage Current (uA) (2 min.)	Rated Ripple Current (mA rms) @ 105°C 120Hz	Rated Ripple Current (mA rms) @ 105°C 100kHz	Impedance @ 20°C (Ω max/ 100kHz)	Endurance @ 105°C (Hours)	Dimensions (mm)					Appearance Drawing No
														D Φ	L	a	d	F	
1	AQ2W681MHU3560H	/	680 μF	±20%	450 V	/	-25~+105	/	/	2700	/	/	3000	35	60	/	/	10	

※Test leakage current before testing dissipation factor and capacitance during the electric characteristic test.

REMARKS:	APPROVED BY	CHECKED BY	PREPARED BY
1. Sleeve Color: Dark Blue. 2. Suffix H indicates High Temperature.	张洪斌	曾爱娥	梁慧妍