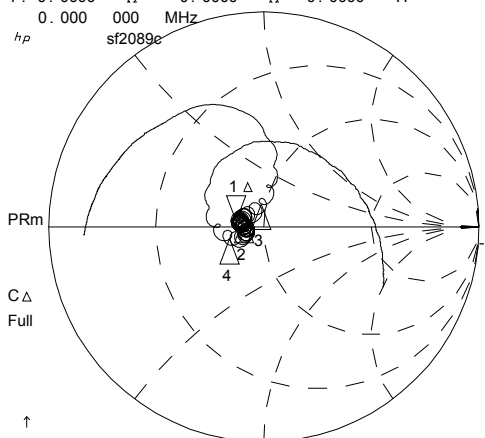


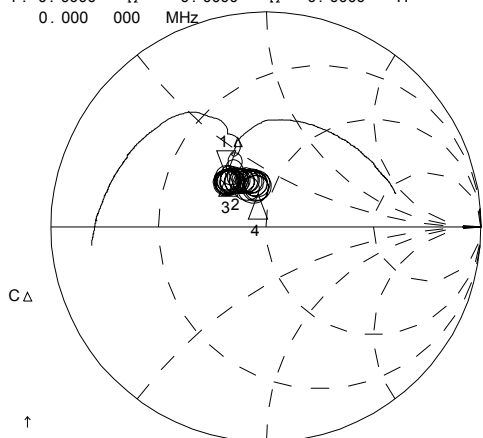
18 Nov 2005 15:21:41

CH1 S11 1 UFS
 1: 0.0000 Ω 0.0000 Ω 0.0000 H
 0.000 000 MHz



CH1 Markers
 Δ REF=1
 2: 3.0195 Ω
 1.6621 Ω
 282.553 kHz
 3: 9.3320 Ω
 8.3770 Ω
 -19.5794 MHz
 4: -2.2051 Ω
 -6.1328 Ω
 20.1445 MHz

CH3 S22 1 UFS
 1: 0.0000 Ω 0.0000 Ω 0.0000 H
 0.000 000 MHz

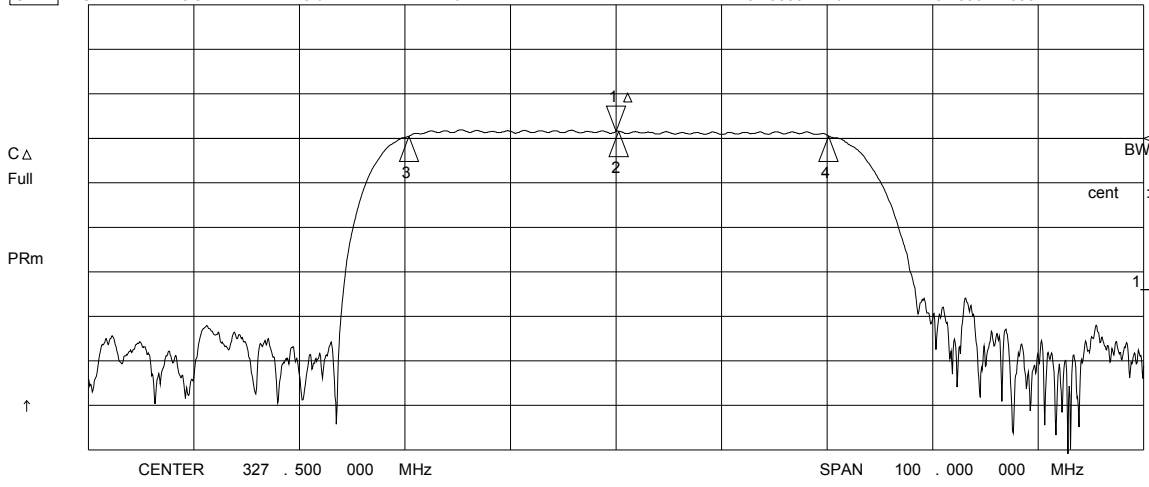


CH3 Markers
 Δ REF=1
 2: 2.5342 Ω
 4.0986 Ω
 282.553 kHz
 3: 70.313 mΩ
 1.7891 Ω
 -19.5794 MHz
 4: 13.325 Ω
 -2.1670 Ω
 20.1445 MHz

↑
 CENTR 327.500 MHz SPAN 100.000 MHz

↑
 CENTR 327.500 MHz SPAN 100.000 MHz

CH2 S21 LOG 10 dB/ REF -12 dB 1: 0.0000 dB 0.000 000 MHz

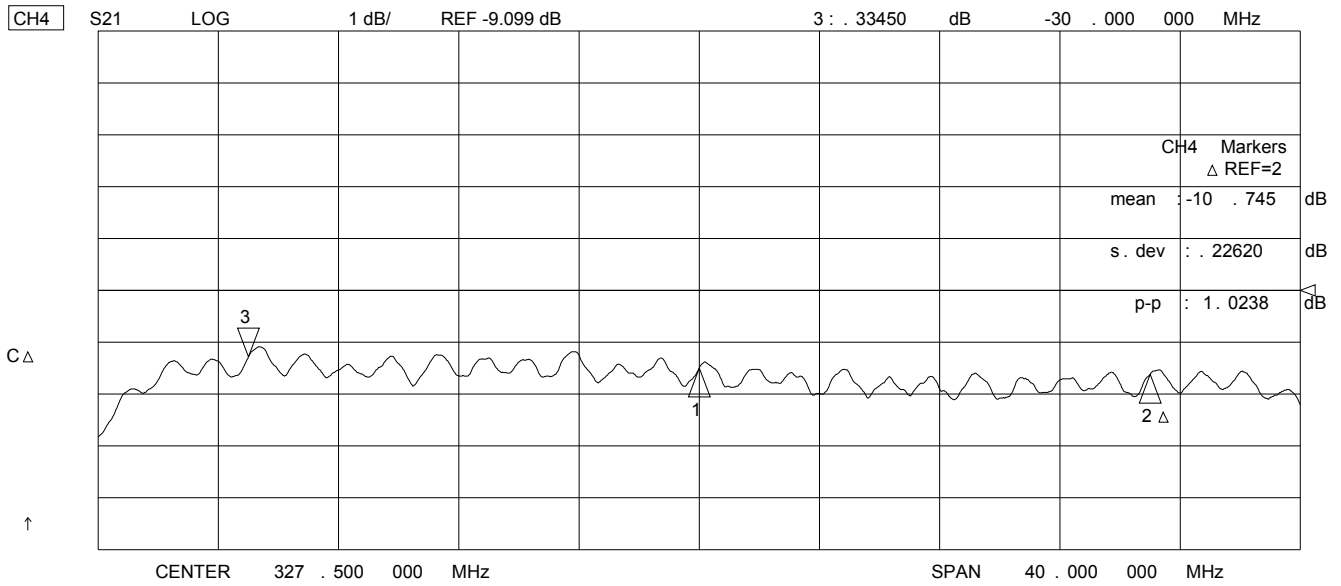
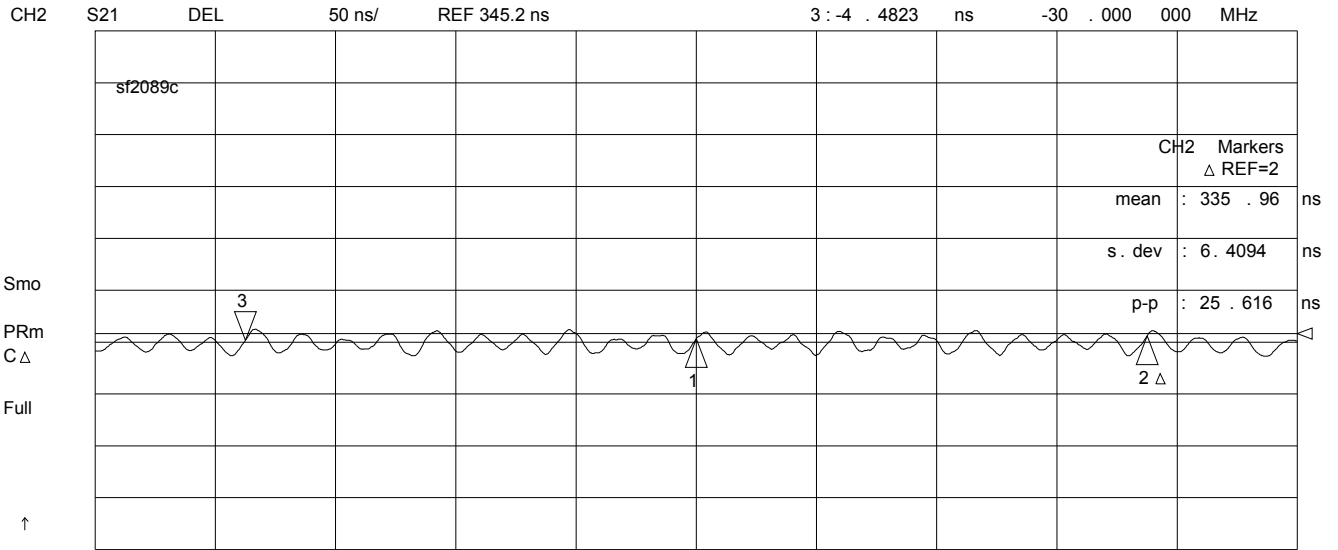


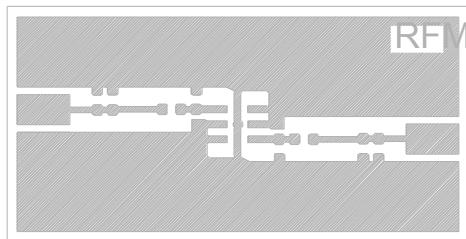
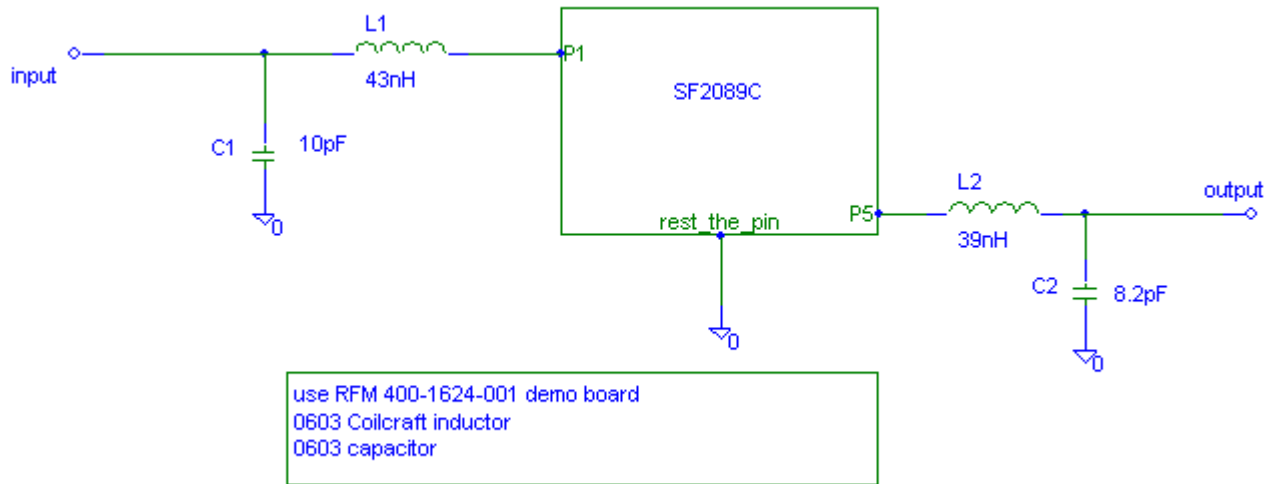
CH2 Markers
 Δ REF=1
 BW: 39.723986 MHz
 cent: 327.782553 MHz
 Q: 8.2515
 1_loss: -10.490 dB

↑
 CENTER 327.500 000 MHz

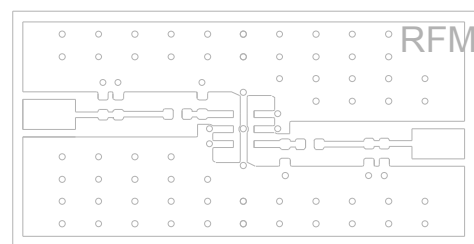
SPAN 100.000 000 MHz

18 Nov 2005 15:16:08



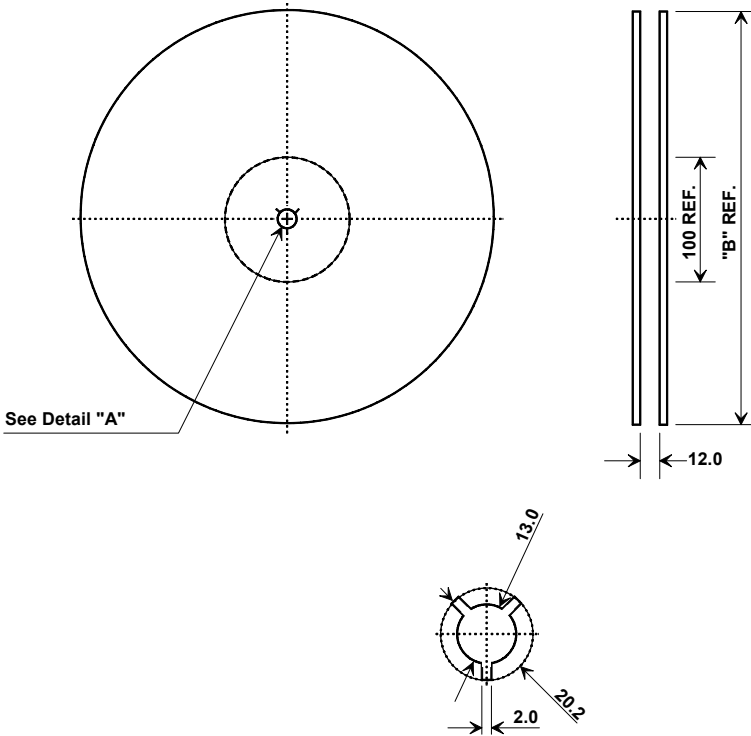


1.590 REF.



DRILL ALL HOLES #76 DRILL (0.020)
ALL HOLES ARE PLATED THRU.

Tape and Reel Specifications

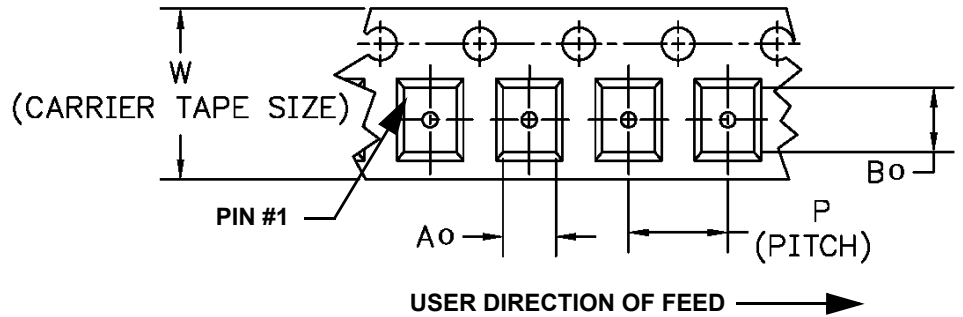
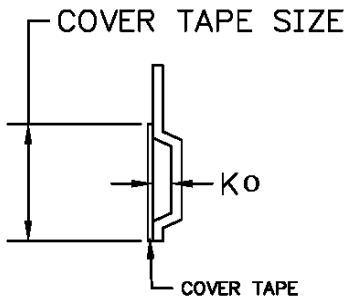


Tape and Reel Standard per ANSI/EIA-481

"B" Nominal Size		Quantity Per Reel
Inches	millimeters	
7	178	500
13	330	3000

COMPONENT ORIENTATION and DIMENSIONS

Carrier Tape Dimensions	
Ao	5.3 mm
Bo	5.3 mm
Ko	2.0 mm
Pitch	8.0 mm
W	12.0 mm



Recommended Reflow Profile

1. Preheating shall be fixed at 150~180°C for 60~90 seconds.
2. Ascending time to preheating temperature 150°C shall be 30 seconds min.
3. Heating shall be fixed at 220°C for 50~80 seconds and at 260°C +0/-5°C peak (10 seconds).
4. Time: 5 times maximum.

