

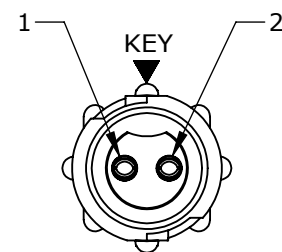
MFG. ENG.	APPROVED BY:	DATE:	QA	APPROVED BY:	DATE:
-----------	--------------	-------	----	--------------	-------

ASS'Y P/N	CONTACT QTY.	CABLE O.D. RANGE
W18280-2SG-P-311	2	0.09 - 0.14 [2.3 - 3.6]
W18280-2SG-P-315	2	0.15 - 0.17 [3.8 - 4.3]
W18280-2SG-P-318	2	0.18 - 0.20 [4.6 - 5.1]
W18280-3SG-P-311	3	0.09 - 0.14 [2.3 - 3.6]
W18280-3SG-P-315	3	0.15 - 0.17 [3.8 - 4.3]
W18280-3SG-P-318	3	0.18 - 0.20 [4.6 - 5.1]
W18280-XSG-P-3XX		

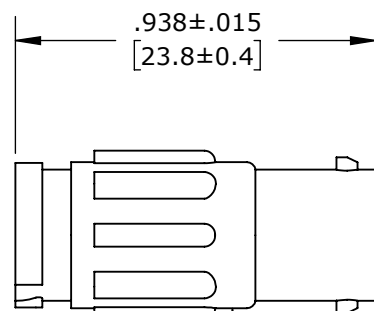
**NOTES:**

1. ALL PARTS ARE BULK PACKED.
2. REFER TO DRAWING HPMCSTD FOR CONTACT PATTERNS.
3. ALL DIMENSIONS ARE REFERENCE ONLY IN INCHES [mm], WITHIN ±0.015 UNLESS OTHERWISE NOTED.

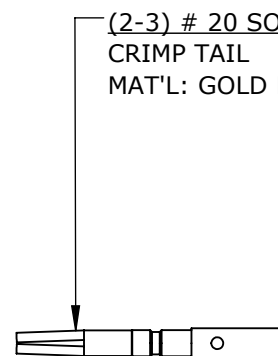
# OF CONTACTS ————— GROMMET SIZE = CABLE O.D. RANGE:  
 311 = 0.09 - 0.14 [2.3 - 3.6]  
 315 = 0.15 - 0.17 [3.8 - 4.3]  
 318 = 0.18 - 0.20 [4.6 - 5.1]



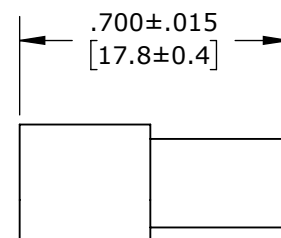
**FACE VIEW**  
W18280-2SG-P-3XX



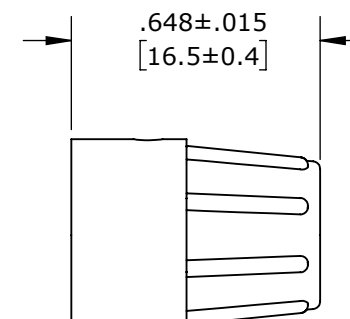
CABLE TO CABLE HOUSING  
MAT'L: HOUSING -THERMOPLASTIC, BLACK



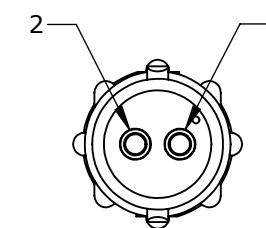
(2-3) # 20 SOCKET CONTACTS  
CRIMP TAIL  
MAT'L: GOLD PLATED, COPPER ALLOY



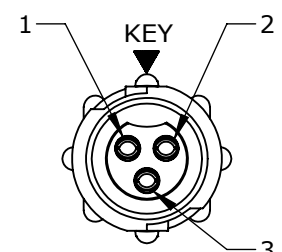
GROMMET  
MAT'L: ELASTOMER, BLACK  
SEE TABLE FOR CABLE O.D. SIZE OPTIONS



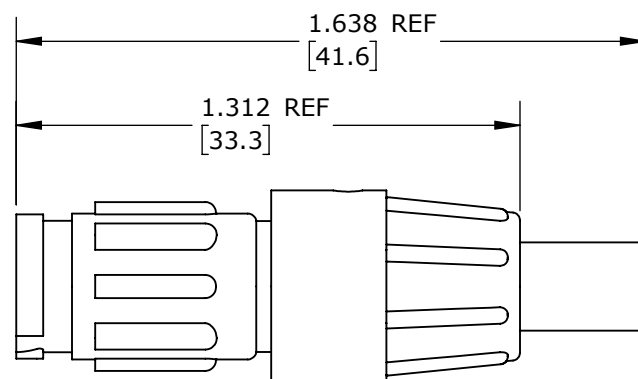
BACKSHELL  
MAT'L: THERMOPLASTIC, BLACK



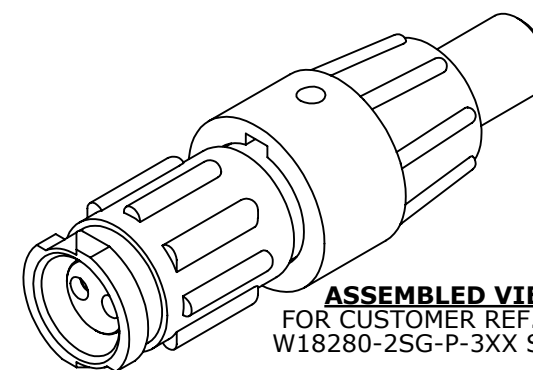
**WIRING VIEW**  
W18280-2SG-P-3XX



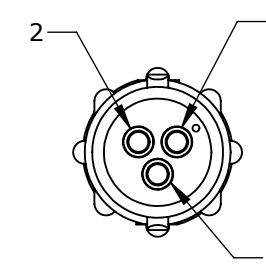
**FACE VIEW**  
W18280-3SG-P-3XX



**ASSEMBLED VIEW**  
FOR CUSTOMER REF. ONLY



**ASSEMBLED VIEW**  
FOR CUSTOMER REF. ONLY  
W18280-2SG-P-3XX SHOWN



**WIRING VIEW**  
W18280-3SG-P-3XX

CUSTOMER PRINT

PART NUMBER: W18280-XSG-P-3XX

**CUSTOMER APPROVAL**

THIS DOCUMENT CONTAINS CONFIDENTIAL INFORMATION PROPRIETARY TO CONXALL CORPORATION. ANY REPRODUCTION, DISCLOSURE, OR USE OF THIS DOCUMENT /INFORMATION IS EXPRESSLY PROHIBITED UNLESS AUTHORIZED IN WRITING BY CONXALL CORPORATION.

APPROVED BY: \_\_\_\_\_  
DATE: \_\_\_\_\_

**RoHS COMPLIANT**

DIMENSIONS IS BRACKETS [ ] ARE METRIC

**PRELIMINARY**

0A	JGK	8/22/19	DRAWING CREATED FOR PDR #18004.		
REV.	INIT.	DATE	DESCRIPTION		
			ALL INFORMATION ILLUSTRATED IS THE PROPERTY OF CONXALL CORPORATION. UNAUTHORIZED DUPLICATION OR DISTRIBUTION OF THIS DOCUMENT IS PROHIBITED.  ALL UNITS ARE IN FEET, INCHES, FRACTION OF INCHES AND DECIMALS.  UNLESS OTHERWISE SPECIFIED TOLERANCES: 3 PLACE DECIMALS ±.005 ANGLES ±1° FRACTIONS ±1/16  ▽ - CRITICAL CHARACTERISTIC FLAG PER SPEC. XXXX	ORIG. DRAWN BY: JGK DATE: 8/22/19  CHECKED BY:  APPROVED BY:	 601 E. WILDWOOD VILLA PARK, IL 60181  TITLE: CABLE TO CABLE CONN. ASS'Y (2-3) #20 SOCKET CONTACTS, CRIMP INSTA-CLICK, MICRO-CON-X STANDARD PRODUCT  CUSTOMER:
SCALE	SIZE	SHEET			
NTS	B	1 OF 1			
FILE:	DIRECTORY:	PART NUMBER:	REV		
W18280-XSG-P-3XX	SLW	W18280-XSG-P-3XX	0A		