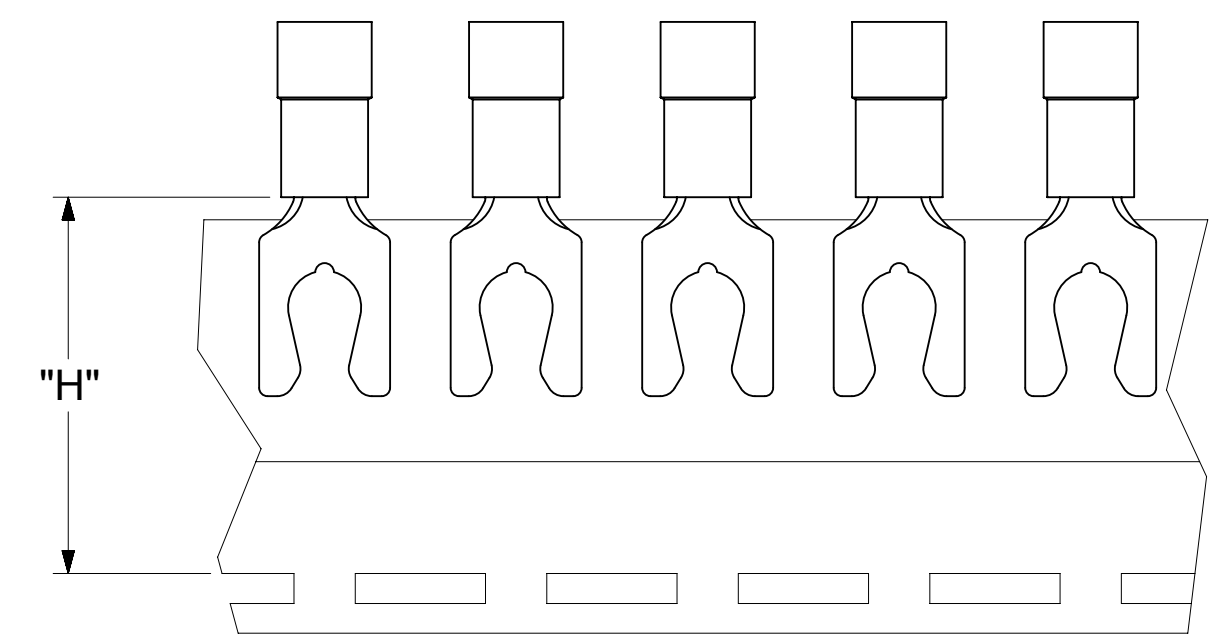
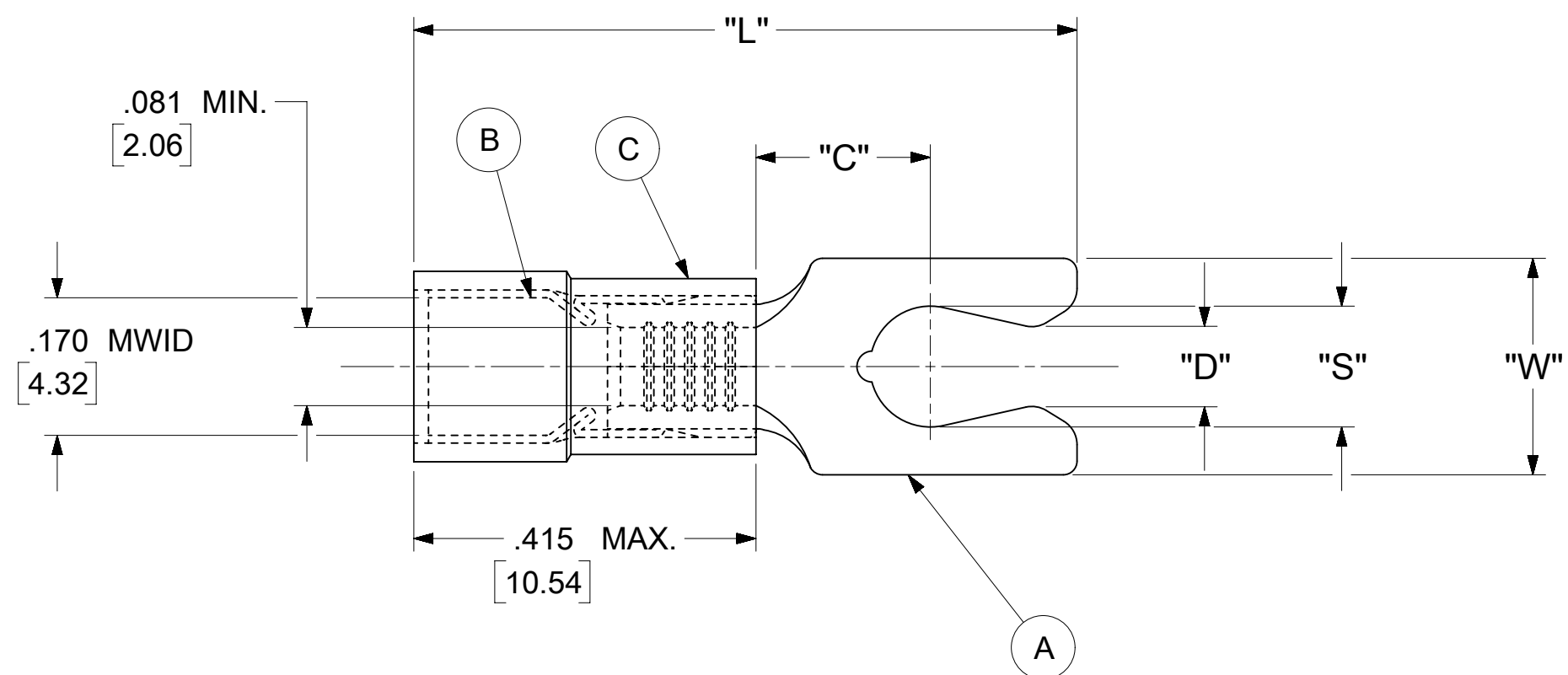


LOOSE PIECE		TAPE MOUNTED		SPECIFICATIONS						
MATERIAL NUMBER	ENGINEERING NUMBER	MATERIAL NUMBER	ENGINEERING NUMBER	STUD SIZE	"S" ±.005 [0.13]	"W" ±.010 [0.25]	"C" MIN.	"L" MAX.	"D" ±.005 [0.13]	"H"
191150022	BB-8707-05	---	---	5	.127 [3.23]	.250 [6.35]	.230 [5.84]	.825 [20.96]	1.05 [2.67]	---
191150024	BB-8707-06	191150025	BB-8707-06T	6	.146 [3.71]	.250 [6.35]	.230 [5.84]	.825 [20.96]	.114 [2.90]	.980 [24.89]



PARTS ON TAPE

NOTES:

- MATERIAL:
 - (A). TERMINAL: COPPER (STOCK THICKNESS .031±.001 [0.79])
PLATING: ELECTRO-TIN (.0003 MIN.)
 - (B). TIN-PLATED BRASS FUNNEL FERRULE
 - (C). INSULATION: NYLON (COLOR CODED BLUE)
- MWID: MAXIMUM WIRE INSULATION DIAMETER
- WIRE SIZE: 16 -14 AWG
1.0 -2.5 MM²
- "UL" LISTING #E32244
"CSA" LISTING #18689
- ALL DIMENSIONS IN INCHES/[MM].
- PARTS ARE ROHS COMPLIANT.
- DIMS. SHOWN ARE FOR REFERENCE ONLY.

SYMBOLS	THIS DRAWING CONTAINS INFORMATION THAT IS PROPRIETARY TO MOLEX ELECTRONIC TECHNOLOGIES, LLC AND SHOULD NOT BE USED WITHOUT WRITTEN PERMISSION										
	DIMENSION UNITS	SCALE		CURRENT REV DESC: MIGRATION TO ECTR/NX							
∇ = 0	INCH/MM	NTS		EC NO: 621540							
∇ = 0	GENERAL TOLERANCES (UNLESS SPECIFIED)			DRWN: ABENJAMINLW 2019/07/24						DOC TYPE	
∇ = 0		MM	INCH	CHK'D: GROJAS01 2019/07/29						DOC PART	
∇ = 0	4 PLACES	± ---	± ---	APPR: JMACNEIL 2019/08/05						REVISION	
∇ = 0	3 PLACES	± ---	± .005	INITIAL REVISION:						191150022	
∇ = 0	2 PLACES	± 0.13	± .01	DRWN: JJ 1984/11/09						PSD 000 A	
∇ = 0	1 PLACE	± 0.25	± ---	APPR: JMACNEIL 2019/08/05						MATERIAL NUMBER	
∇ = 0	0 PLACES	± ---	± ---	DRAFT WHERE APPLICABLE MUST REMAIN WITHIN DIMENSIONS						CUSTOMER	
∇ = 0	ANGULAR TOL	± 0.5 °		THIRD ANGLE PROJECTION		DRAWING		SERIES		SHEET NUMBER	
∇ = 0				C-SIZE		19115		SEE TABLE		GENERAL MARKET 1 OF 1	

NOTES:

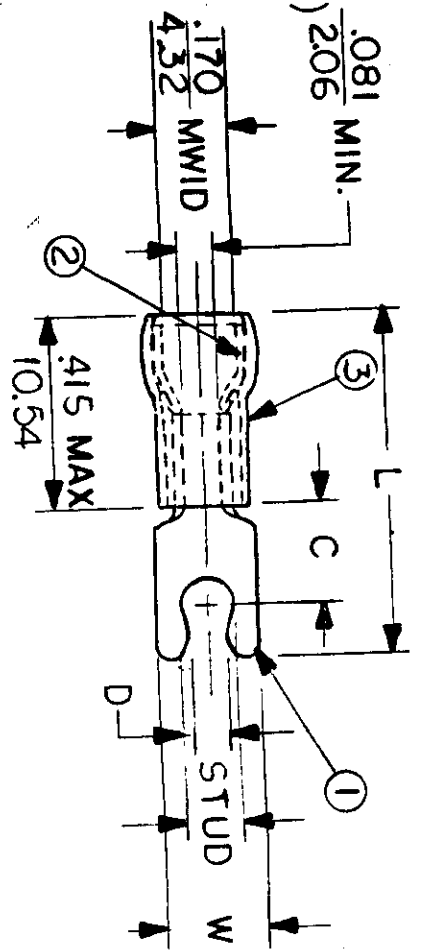
- ① MAT'L: COPPER (STOCK TKN. $\frac{.031}{.79}$)
- ② TIN-PLATING: ELECTRO TIN (.0003 MIN)
- ③ TIN-PLATED BRASS FUNNEL FERRULE
- ④ NYLON INSULATION (COLOR CODED BLUE) $\frac{.081}{206}$ MIN.

STUD SIZES: ($\pm .005$)

- 02 = .094
- 04 = .119
- 06 = .146
- 08 = .173
- 10 = .198
- 14 = .265
- 56 = .328
- 38 = .390

"UL" LISTING # E32244
 "CSA" LISTING # 18689

WIRE SIZE: 16 - 14 AWG
 10 - 25 MM²



ALL DIMENSIONS = $\frac{\text{INCHES}}{\text{MM}}$ (MWID) = DENOTES MAXIMUM WIRE INSULATION DIAMETER

PART NUMBER	"W" ±.010	"C" MIN.	"L" MAX.	"D" ±.005	AVAILABLE STUD SIZES	DIMENSIONAL TOLERANCES UNLESS OTHERWISE SPECIFIED		REFERENCE	SCALE: NTS	DATE	TITLE:	DWG. NO.	
						DEC. ±	ANG. ±					A	CUSTOMER DWG
BB-8707	$\frac{.250}{6.35}$	$\frac{.230}{5.84}$	$\frac{.825}{20.96}$	$\frac{1.05}{2.67}$	05 ($\frac{.127 \pm .005}{3.23}$)					11-9-84	SNAP SPADE SHORT TONGUE TERMINAL AVIKRIMP 800-SERIES		
BB-8707-	$\frac{.250}{6.35}$	$\frac{.230}{5.84}$	$\frac{.825}{20.96}$	$\frac{1.14}{2.90}$	06					11-29-84			



CUSTOMER DWG