



# *MB59XX Series Modbus Gateway*

## User Manual

V1.3

April 17<sup>th</sup>, 2018

**This PDF Document contains internal hyperlinks for ease of navigation.**  
For example, click on any item listed in the [Table of Contents](#) to go to that page.

---

**Published by:****Atop Technologies, Inc.**

2F, No. 146, Sec. 1, Tung-Hsing Rd,  
30261 Chupei City,  
Hsinchu County  
Taiwan, R.O.C.

Tel: +886-3-550-8137  
Fax: +886-3-550-8131  
sales@atop.com.tw  
www.atoponline.com  
www.atop.com.tw

## Important Announcement

The information contained in this document is the property of Atop technologies, Inc., and is supplied for the sole purpose of operation and maintenance of Atop Technologies, Inc., products.

No part of this publication is to be used for any other purposes, and it is not to be reproduced, copied, disclosed, transmitted, stored in a retrieval system, or translated into any human or computer language, in any form, by any means, in whole or in part, without the prior explicit written consent of Atop Technologies, Inc.,

Offenders will be held liable for damages and prosecution.

All rights, including rights created by patent grant or registration of a utility model or design, are reserved.

## Disclaimer

We have checked the contents of this manual for agreement with the hardware and the software described. Since deviations cannot be precluded entirely, we cannot guarantee full agreement. However, the data in this manual is reviewed regularly and any necessary corrections will be included in subsequent editions.

Suggestions for improvement are welcome.

All other product's names referenced herein are registered trademarks of their respective companies.

## Documentation Control

<b>Author:</b>	Saowanee Saewong
<b>Revision:</b>	1.3
<b>Revision History:</b>	Add PPTP, OpenVPN, SMS function
<b>Creation Date:</b>	24 March 2017
<b>Last Revision Date:</b>	17 April 2018
<b>Product Reference:</b>	MB59XX Series Modbus Gateway User Manual
<b>Document Status:</b>	Update

## Table of Contents

1	Preface .....	8
1.1	Purpose of the Manual .....	8
1.2	Who Should Use This User Manual .....	8
1.3	Supported Platform .....	8
1.4	Manufacturers' FCC Declaration of Conformity Statement .....	8
2	Introduction .....	9
2.1	Overview .....	9
3	Getting Started .....	11
3.1	Packing List .....	11
3.2	Appearance, Front and Rear Panels .....	12
3.3	First Time Installation .....	14
3.4	Factory Default Settings .....	15
3.4.1	Network Default Settings .....	15
3.4.2	Modbus Default Settings .....	15
4	Configuration and Setup .....	16
4.1	Configuration of Network Parameters through Device Management Utility .....	16
4.2	Configuring through Web Interface .....	18
4.3	Configuring Automatic IP Assignment with DHCP .....	20
4.4	Web Overview .....	20
4.5	Network Configuration .....	21
4.6	3G Settings or 4G Settings .....	21
4.7	Spanning Tree .....	24
4.7.1	Spanning Tree's Setting .....	24
4.7.2	Spanning Tree's Bridge Info .....	25
4.7.3	Spanning Tree's Port Setting .....	27
4.8	Basic Settings .....	30
4.8.1	COM Settings .....	30
4.8.2	Operation Mode .....	31
4.8.3	Serial Settings .....	31
4.8.4	VCOM Settings .....	31
4.8.5	TCP Settings .....	34
4.8.6	Slave ID Map .....	36
4.8.7	SMS Template .....	37
4.8.8	SMS Settings .....	39
4.9	Advanced Settings .....	41
4.9.1	SNMP Settings .....	41
4.9.2	Modbus .....	44
4.10	Alert .....	45
4.10.1	Settings .....	45
4.10.2	Alert Events .....	46
4.11	VPN .....	47
4.12	PPTP Settings .....	48
4.13	OpenVPN Settings .....	49
4.13.1	OpenVPN Setting .....	49
4.13.2	OpenVPN Keys .....	50
4.13.3	OpenVPN Status .....	52
4.14	IPsec Settings .....	53
4.14.1	IPsec Settings .....	56

4.14.2	IPsec Status .....	60
4.14.3	Examples of IPsec Settings .....	60
4.14.3.1	Host-to-Host Connections .....	60
4.14.3.2	Host-to-Network Connections .....	62
4.14.3.3	Network-to-Network (Subnet-to-Subnet) Connections .....	63
4.15	System .....	66
4.15.1	Log Settings .....	66
4.15.2	System Log .....	66
4.15.3	Data Log .....	66
4.15.4	Modbus Statistic .....	67
4.15.5	Time .....	67
4.15.6	Security .....	68
4.15.7	Import/Export .....	70
4.15.8	Factory Default .....	71
4.16	Restart .....	72
5	Applications and Examples .....	73
5.1	Using ID offset range mapping .....	73
6	Specifications .....	75
6.1	Hardware .....	75
6.2	Serial port Pin Assignments .....	77
6.2.1	MB5901 Pin Assignments .....	77
6.2.2	MB5904D Pin Assignments .....	78
6.2.3	MB5901B Pin Assignments .....	79
6.2.4	MB5908A/MB5916A Pin Assignments .....	80
6.2.5	MB5908/MB5916 Pin Assignments .....	81
6.3	LED Indicators .....	82
6.4	Software .....	82
7	Warranty .....	83

## Table of Figures

Figure 2.1	Possible Network Configuration of MB59XX Series Modbus Gateway .....	9
Figure 2.2	Use Cases of the MB59XX Series Modbus Gateway .....	10
Figure 4.1	List of Device in Device Management Utility .....	16
Figure 4.2	Pull-down Menu of Configuration and Network .....	17
Figure 4.3	Pop-up Window of Network Setting .....	17
Figure 4.4	Authorization for Changes of Network Setting .....	18
Figure 4.5	Pop-up Notification Window after Authorization .....	18
Figure 4.6	Overview Web Page of Modbus Gateway .....	19
Figure 4.7	Map of Configuring Web Page on Modbus Gateway .....	19
Figure 4.8	Overview Web Page .....	20
Figure 4.9	Network Web Page .....	21
Figure 4.10	3G Settings Web Page .....	22
Figure 4.28	Spanning Tree Menu .....	24
Figure 4.29	Setting Web Page of Spanning Tree .....	25
Figure 4.30	Bridge Info Web Page of Spanning Tree .....	26
Figure 4.31	Spanning Tree Port Setting (Part 1) .....	27
Figure 4.32	Spanning Tree Port Setting (Part 2) .....	27

Figure 4.33 COM Settings Web Page .....	30
Figure 4.34 Save Successfully Message .....	31
Figure 4.35 VCOM Settings Web Page.....	32
Figure 4.36 Pull-down Menu of VCOM Mode.....	32
Figure 4.37 Check Box for Applying the Settings to All VCOMSs .....	33
Figure 4.38 Modbus TCP Settings Web Page with TCP Slave Mode.....	34
Figure 4.39 Modbus TCP Setting Page with TCP Master Operation Mode Selection .....	35
Figure 4.40 Slave ID Map Page with Slave ID Setting in Alias Mode .....	36
Figure 4.41 Slave ID Map Web Page with Slave ID Setting in Offset Mode .....	37
Figure 4.41 SMS Template – configuration interface – Hex, Decimal or Floating reporting format .....	37
Figure 4.41 SMS Template – configuration interface – String reporting format.....	38
Figure 4.41 SMS Settings – Example 1.....	39
Figure 4.41 SMS Settings – Example 2.....	39
Figure 4.41 SMS Settings – Example 3.....	40
Figure 4.42 SNMP Settings Web Page with SNMP disabled.....	41
Figure 4.43 SNMP Settings Web Page with SNMP Enabled and Version v1/v2c/v3.....	43
Figure 4.44 SNMP Settings Web Page with SNMP Enabled and Version v1/v2c .....	43
Figure 4.45 SNMP Settings Web Page with SNMP Enabled and Version Only v3 .....	44
Figure 4.46 Advanced Modbus Settings of Response Timeout for Modbus Exception .....	44
Figure 4.47 SMTP Settings Web Page .....	45
Figure 4.48 Alert Events Web Page.....	46
Figure 4.21 VPN Scenario of SE/PG/MB59XX .....	47
Figure 4.12 VPN menu structure .....	47
Figure 4.23 PPTP configuration page.....	48
Figure 4.14 PPTP Link Status.....	48
Figure 4.25 OpenVPN Setting.....	49
Figure 4.26 OpenVPN Keys.....	50
Figure 4.27 Certification information.....	51
Figure 4.28 Certificate Upload.....	51
Figure 4.30 OpenVPN server status.....	52
Figure 4.11 An example of Host-to-Host Connection on MB59XX. ....	53
Figure 4.12 Roadwarrior Application using Host-to-Subnet Connection .....	54
Figure 4.13 Gateway Application using Host-to-Subnet Connection.....	54
Figure 4.14 Example of network application using subnet-2-subnet connection via MB59XX and a peer device ..	54
Figure 4.15 An example of host-network application via the subnet-to-subnet connection.....	55
Figure 4.16 An example of host-host application via the subnet-to-subnet connection.....	55
Figure 4.17 IPsec Tunnels Web Page under IPsec Setting Menu .....	56
Figure 4.18 IPsec Status Web Page.....	60
Figure 4.19 IPsec VPN Tunnel with Host-to-Host Topology.....	61
Figure 4.20 General Settings for Host-to-Host with Static Peer.....	61
Figure 4.21 General Settings for Host-to-Host with Dynamic Peer .....	62
Figure 4.22 IPsec VPN Tunnel with Host-to-Network Topology .....	62
Figure 4.23 General Settings for Host-to-Network with Static Peer.....	63
Figure 4.24 General Settings for Host-to-Network with Dynamic Peer.....	63
Figure 4.25 IPsec VPN Tunnel with Network-to-Network Topology .....	64
Figure 4.26 General Settings for Network-to-Network with Static Peer.....	64
Figure 4.27 General Settings for Network-to-Network with Dynamic Peer.....	65
Figure 4.49 Log Settings Web Page .....	66
Figure 4.50 System Log Web Page .....	66
Figure 4.51 Data Log Web Page .....	67
Figure 4.52 Modbus Statistics Web Page.....	67
Figure 4.53 Time Web Page.....	68
Figure 4.54 Security Web Page .....	69
Figure 4.55 Authentication Required after a Password Change .....	69
Figure 4.56 Import/Export Web Page.....	70
Figure 4.57 File Chooser for Uploading a Configuration File to Modbus Gateway .....	71

Figure 4.58 Export Configuration File from Modbus Gateway .....	71
Figure 4.59 Factory Default Web Page .....	72
Figure 4.60 Restart Web Page .....	72
Figure 5.1 Continuous Slave ID Mapping Example .....	73
Figure 5.2 Entries of Slave ID Mapping in Offset Mode .....	74
Figure 6.1 DB9 Pin Number .....	77
Figure 6.2 Terminal Block (TB-5) Pin Number .....	77
Figure 6.3 DB9 Pin Number .....	78
Figure 6.4 Terminal Block (TB-5) Pin Number .....	78
Figure 6.5 DB9 Pin Number .....	79
Figure 6.6 2 x 7-pin Male Terminal Block .....	79
Figure 6.7 DB9 Pin Number .....	80
Figure 6.8 Terminal Block (TB-5) Pin Number .....	80
Figure 6.9 MB5908/MB5916 Serial port on RJ45 Pin Numbering .....	81

## List of Tables

Table 3.1 Packing List .....	11
Table 3.2 Description of Optional Accessories .....	11
Table 3.3 Modbus Default Settings .....	15
Table 3.4 Other Default Settings .....	15
Table 4.1 Description of 3G Information .....	22
Table 4.3 Descriptions of Spanning Tree Parameters .....	25
Table 4.4 Bridge's Root Information .....	26
Table 4.5 Bridge's Topology Information .....	27
Table 4.6 Descriptions of Spanning Tree Port Setting .....	27
Table 4.7 Default Path Cost for RSTP .....	28
Table 6.1 SMS Template - Settings .....	38
Table 6.1 SMS Template settings - Message/Value Pair .....	38
Table 4.3 Description of Parameters in IPsec Tunnels Web Page .....	58
Table 6.1 Hardware Specification .....	75
Table 6.2 MB5901 Pin Assignment for DB9 to RS-232/RS422/RS-485 Connectors .....	77
Table 6.3 MB5901 Pin Assignment for 5-Pin Terminal Block to RS-232/RS-422/RS-485 Connectors .....	77
Table 6.4 MB5904D Pin Assignment for DB9 to RS-232/RS422/RS-485 Connectors .....	78
Table 6.5 MB5904D Pin Assignment for 5-Pin Terminal Block to RS-232/RS-422/RS-485 Connectors .....	78
Table 6.6 MB5901B Pin Assignment for DB9 to RS-232/RS-485 Connector .....	79
Table 6.7 MB5901B 2 x 7-pin Male TB for RS-232/485(COM 1),RS-232(COM 2) Relay and DI pin-assignment .....	79
Table 6.8 MB5908A/16A Pin Assignment for DB9 to RS-232/RS422/RS-485 Connectors .....	80
Table 6.9 MB5908A/16A Pin Assignment for 5-Pin Terminal Block to RS-232/RS-422/RS-485 Connectors .....	80
Table 6.10 MB5908/16 Pin Assignment for RJ45 to RS-232/RS422/RS-485 Connectors .....	81
Table 6.11 Color Interpretation of LED Indicators .....	82
Table 6.12 Software Tools and Utilities .....	82

# 1 Preface

---

## 1.1 *Purpose of the Manual*

---

This manual supports the user during the installation and configuring of the MB59XX Series Modbus Gateway. It explains the technical features available with the mentioned product. As such, it contains some advanced network management knowledge, instructions, examples, guidelines and general theories designed to help users manage this device and its corresponding software. A background in general theory is necessary when reading it. Please refer to the Glossary for technical terms and abbreviations (if any).

## 1.2 *Who Should Use This User Manual*

---

This manual is to be used by qualified network personnel or support technicians who are familiar with network operations. It might be useful for system programmers or network planners as well. This manual also provides helpful and handy information for first time users. For any related problems, please contact your local distributor. If they are unable to assist you, please redirect your inquiries to [www.atop.com.tw](http://www.atop.com.tw) or [www.atoponline.com](http://www.atoponline.com).

## 1.3 *Supported Platform*

---

This manual is designed for **MB59XX Series Modbus Gateway** and that series only.

## 1.4 *Manufacturers' FCC Declaration of Conformity Statement*

---

NOTE: This equipment has been tested and found to comply with the limits for a Class A digital device, pursuant to Part 15 of the FCC Rules. These limits are designed to provide reasonable protection against harmful interference when the equipment is operated in a commercial environment. This equipment generates, uses, and can radiate radio frequency energy and, if not installed and used in accordance with the instruction manual, may cause harmful interference to radio communications. Operation of this equipment in a residential area is likely to cause harmful interference in which case the user will be required to correct the interference at his/her own expense.

This device complies with Part 15 of the FCC Rules. Operation is subject to the following two conditions:

1. This device may not cause harmful interference, and
2. This device must accept any interference received, including interference that may cause an undesired operation.

---

**Note:** all the figures herein are intended for illustration purposes only. This software and certain features work only on certain Atop's devices.

---



# 2 Introduction

## 2.1 Overview

The MB59XX Modbus Gateway is an industrial network device in between Modbus over Serial Line devices and computer hosts running Modbus/TCP on Ethernet network. Figure 2.1 illustrates a possible network configuration of the MB59XX Series Modbus Gateway. Fully compliant with Modbus/TCP protocol, the Modbus gateway offers a convenient solution to connect existing devices or controllers running Modbus serial protocol (Modbus/ASCII or Modbus/RTU) to an Ethernet network. The MB59XX Series are standard Modbus gateways that convert packets between Modbus TCP and Modbus RTU/ASCII protocols.

The MB59XX Series supports 64 simultaneous TCP masters. Overall, 247 Servers are supported (TCP, COM and VCOM). Each RS-232/422/485 serial port can be individually configured for Modbus/RTU or Modbus/ASCII operation with different baud rate, allowing both types of networks to be fully integrated with Modbus/TCP within one package.

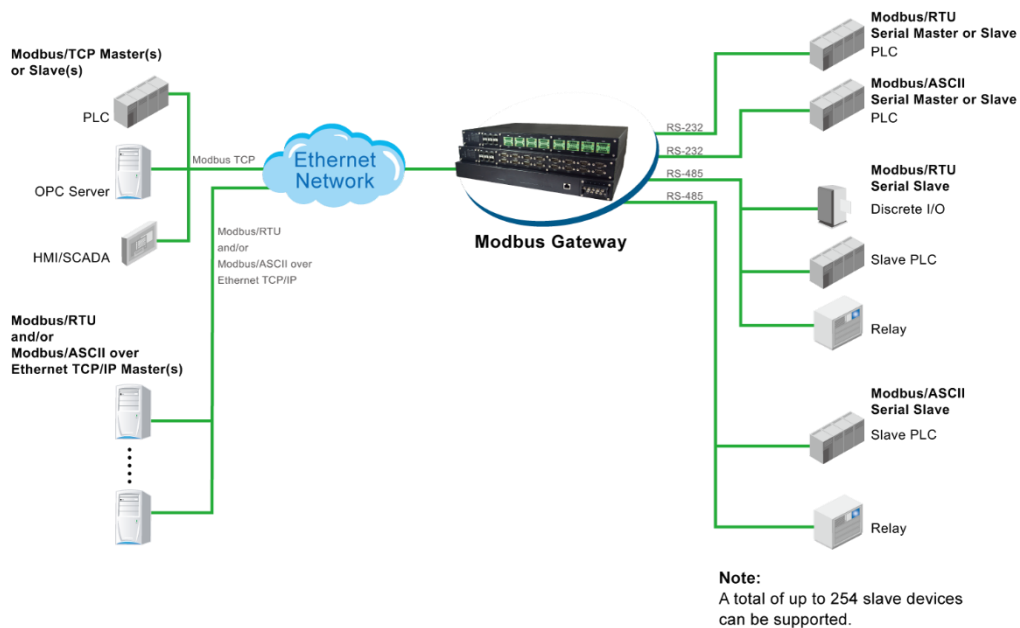


Figure 2.1 Possible Network Configuration of MB59XX Series Modbus Gateway

Figure 2.2 shows three different use cases of the MB59XX Series Modbus Gateway:

- 1) the interface between Modbus RTU/ASCII serial host to Modbus RTU/ASCII serial devices
- 2) the interface between Modbus/TCP over Ethernet network to Modbus RTU/ASCII serial devices
- 3) the interface between Modbus RTU/ASCII host connected through Serial IP over Ethernet (virtual communication port (VCOM)) to Modbus RTU/ASCII serial devices.

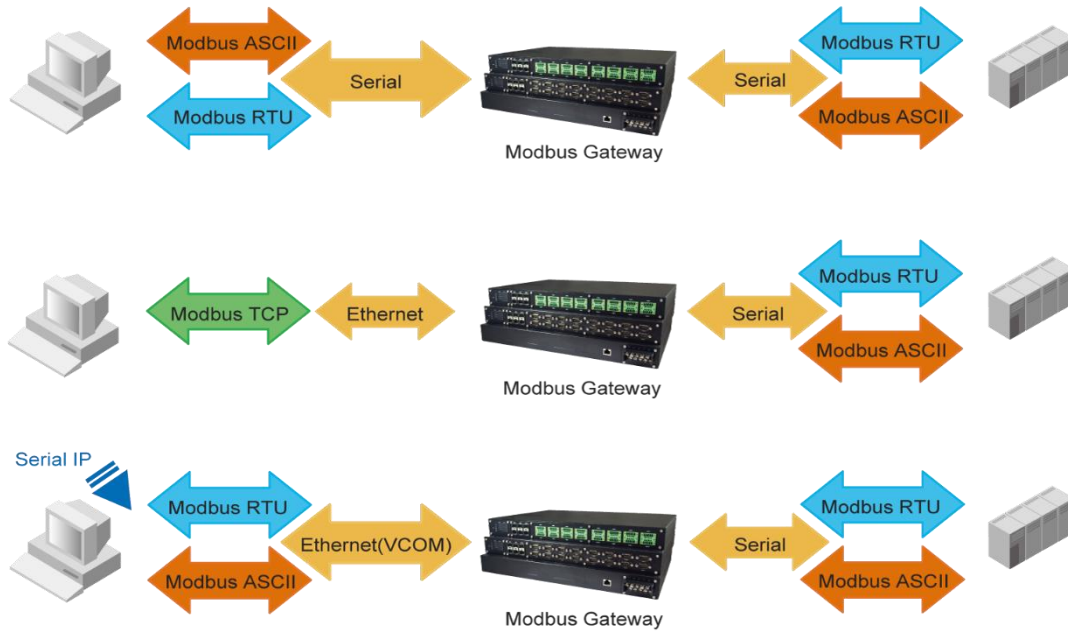


Figure 2.2 Use Cases of the MB59XX Series Modbus Gateway

**Caution**

Beginning from here, extreme caution must be exercised.



Never install or work with electricity or cabling during periods of lightning activity. Never connect or disconnect power when hazardous gases are present.



Warning: HOT!

**WARNING:** Disconnect the power and allow unit to cool for 5 minutes before touching.

## 3 Getting Started

### 3.1 Packing List

Inside the purchased package, you will find the following items.

Table 3.1 Packing List

Item	Quantity	Description
MB59XX	1	Industrial Serial Device Server
Mounting Kit	1	On MB5908 / MB5916 / MB5908A / MB5916A <ul style="list-style-type: none"> <li>• Rack Mounting Type-L angles (x 2)</li> <li>• Screws (x 6)</li> </ul> On MB5901 / MB5904D / MB5901B - DIN Rail Kit
Terminal Block		Power Supply/ Relay output: <ul style="list-style-type: none"> <li>• TB3 x 1: 3-pin 5.08mm lockable Terminal Block (MB5901, MB5901B)</li> <li>• TB3 x 2: 3-pin 5.08mm lockable Terminal Block (MB5908-DC, MB5916-DC)</li> <li>• TB7 x 1: 7-pin 5.08mm lockable Terminal Block (MB5904D only)</li> </ul> Serial ports: Terminal block is included only on TB model <ul style="list-style-type: none"> <li>• TB5 x 1: 5-pin 5.08mm lockable Terminal Block (MB5901)</li> <li>• TB5 x 4: 5-pin 5.08mm lockable Terminal Block (MB5904D)</li> <li>• TB5 x 8: 5-pin 5.08mm lockable Terminal Block (MB5908A)</li> <li>• TB5 x 16: 5-pin 5.08mm lockable Terminal Block (MB5916A)</li> </ul>
Documentation	1	Hardware Installation Guide (Warranty card is included)

Note:

- Notify your sales representative immediately if any of the above items is missing or damaged upon delivery.
- Atop's utility software Device View© and Serial Manager© are obsolete and replaced by Device Management Utility®.

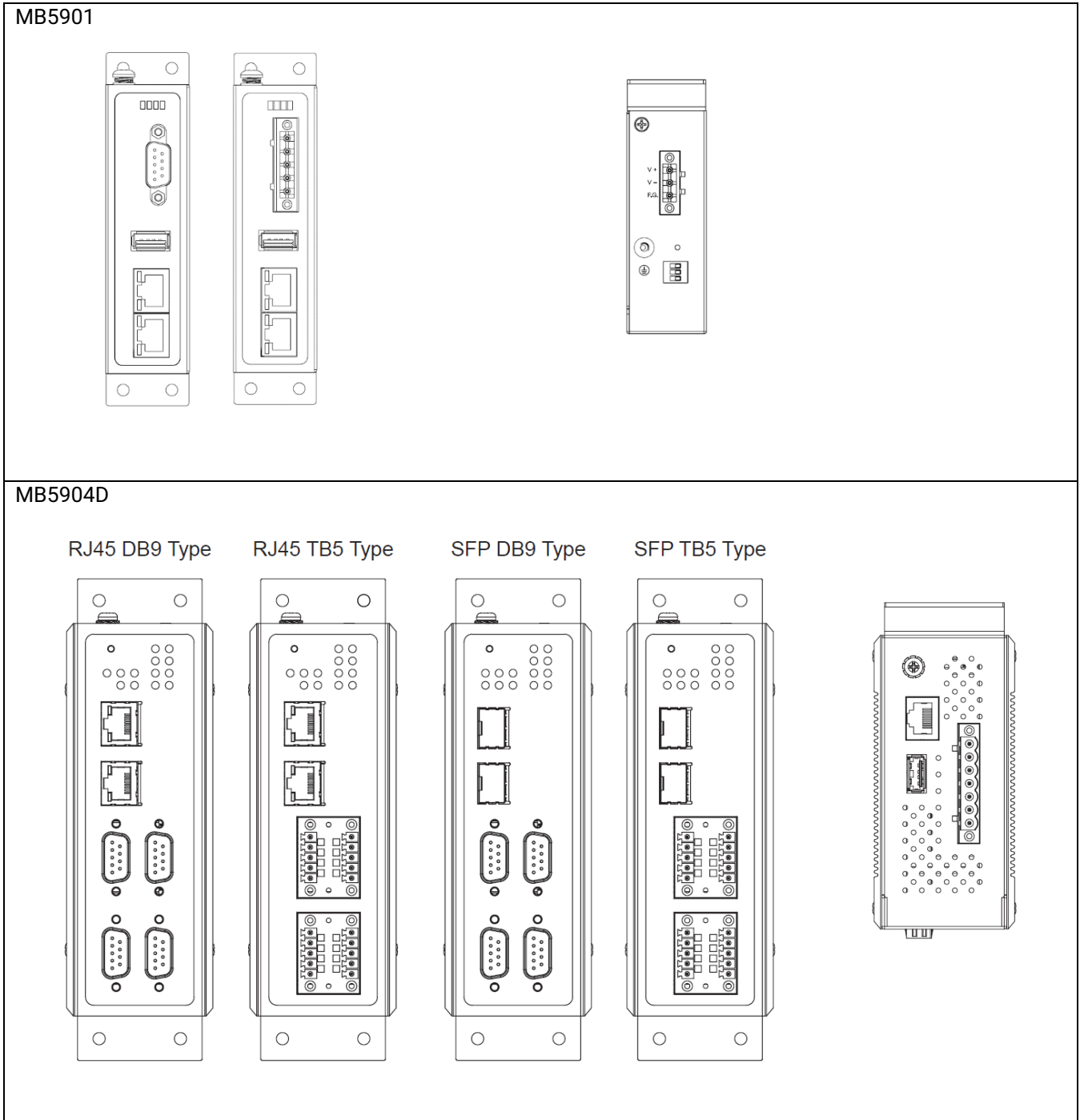
Table 3.2 Description of Optional Accessories

Optional Accessories		
Model Name	Part Number	Description
Wall Mount Kit	7010000000050G	Black aluminum wall mount kit
ADP-DB9(F)-TB5	59906231G	Female DB9 to Female 3.81mm, a TB5 Converter
SDR-75-24	50500752240001G	75W/3.2A DIN-Rail 24VDC power supply 88~264VAC / 124-370VDC input
UN315-1212(US-Y)	50500151120003G	Y-Type power adaptor, 100~240VAC input, 1.25A @ 12VDC output, US plug, LV6
UNE315-1212(EU-Y)	50500151120013G	Y-Type power adaptor, 100~240VAC input, 1.25A @ 12VDC output, EU plug, LV6
LM28-C3S-TI-N	50708031G	SFP Transceiver, 1250Mbps, 850nmVCSEL, Multi-mode, 550m, 3.3V, -20~85°C
LM38-C3S-TI-N	50709411G	SFP Transceiver, 1250Mbps, 1310nmFP, Multi-mode, 2km, 3.3V, -40~85°C
LS38-C3S-TI-N	50709391G	SFP Transceiver, 1250Mbps, 1310nmFP, Single-mode, 10km, 3.3V, -40~85°C
LS38-C3L-TI-N	50709441G	SFP Transceiver, 1250Mbps, 1310nmDFB, Single-mode, 30km, 3.3V, -40~85°C

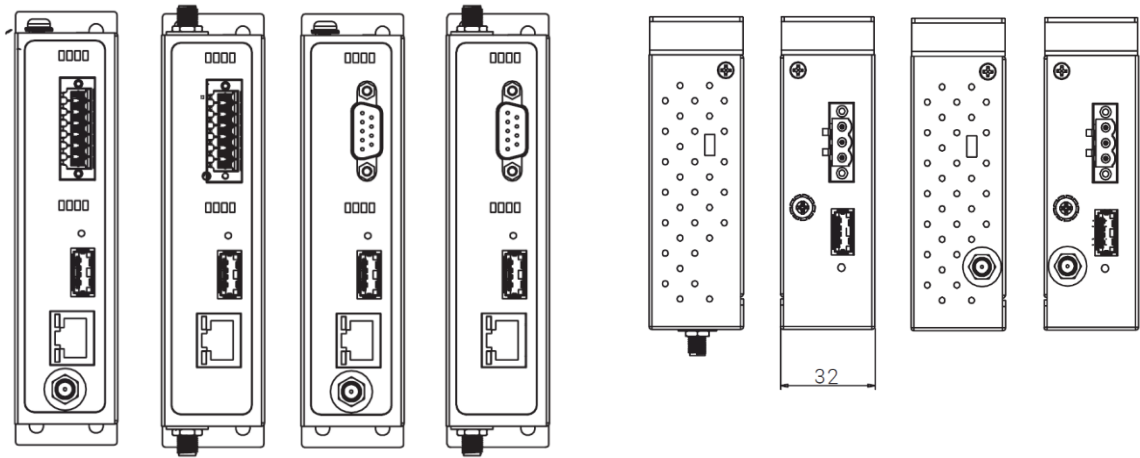
LM38-A3S-TI-N	50708051G	SFP Transceiver, 155Mbps, 1310nmLED, Multi-mode, 2km, 3.3V, -40~85C
LS38-A3S-TI-N	50709431G	SFP Transceiver, 155Mbps, 1310nmFP, Single-mode, 30km, 3.3V, -40~85C

### 3.2 Appearance, Front and Rear Panels

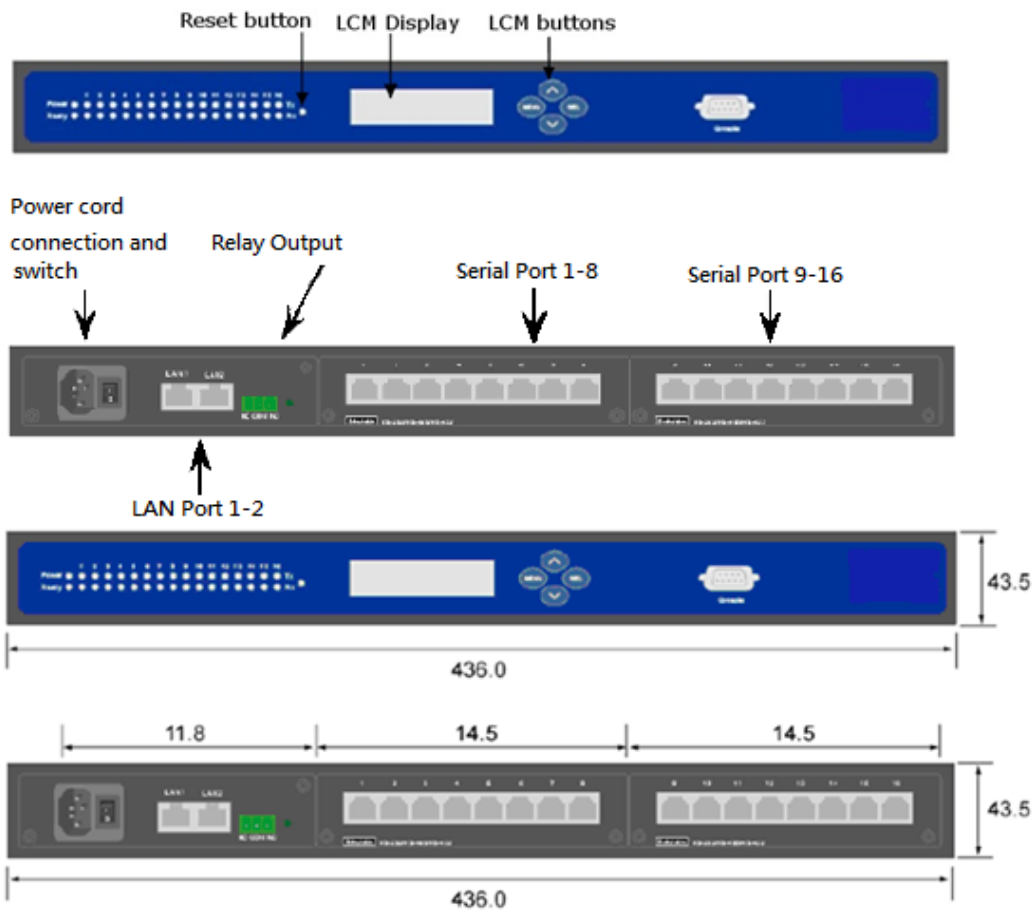
The following figures show particular MB59XX series device's front and rear panels.



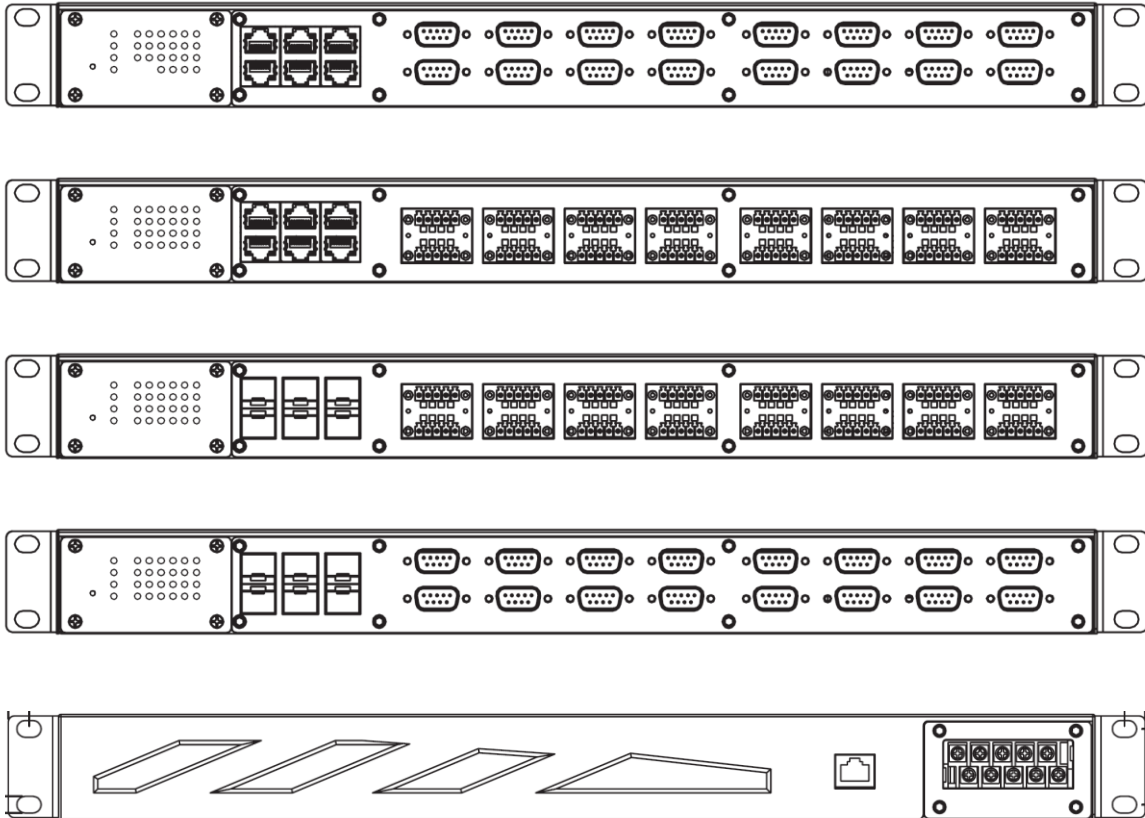
MB5901B



MB5908/16



MB5908A/16A



### 3.3 First Time Installation

Before installing the device, please follow strictly all safety procedures described in the Hardware installation guide supplied inside the product. Atop will not be liable for any damages to property or personal injuries resulting from the installation or overall use of the device. Do not attempt to manipulate the product in any way if unsure of the steps described there. In such cases, please contact your dealer immediately.

Specific installation instructions are not provided in this manual since they may differ considerably based on the hardware purchased.

### 3.4 Factory Default Settings

#### 3.4.1 Network Default Settings

The MB59XX Modbus Gateway comes with one IP address specifically for redundant Ethernet interfaces.

Interface	Device IP	Subnet Mask	Gateway IP
LAN 1	10.0.50.100	255.255.0.0	10.0.0.254
LAN 2	192.168.1.1	255.255.255.0	192.168.1.254
LAN 3~6 (MB5908A and MB5916A only)	192.168.2.1~5.1	255.255.255.0	192.168.1.254

Remarks: Default DNS 1 setting is 168.95.1.1 and DNS 2 setting is 0.0.0.0.

#### 3.4.2 Modbus Default Settings

The MB59XX Modbus Gateway comes with the following default Modbus settings.

Table 3.3 Modbus Default Settings

Parameter	Default Values
<b>Modbus Master</b>	
TCP Settings	TCP Master Mode: TCP Master Port: 502
<b>Modbus Slave</b>	
<ul style="list-style-type: none"> <li>• MB5901</li> <li>• MB5904</li> <li>• MB5908</li> <li>• MB5916</li> <li>• MB5908A</li> <li>• MB5916A</li> </ul>	Mode: RTU Slave Serial Configuration: RS-232, 9600 bps, 8 data bits, No parity bit, 1 stop bit, No Flow Control, Buffer Disable

Other default settings are shown in the following table.

Table 3.4 Other Default Settings

Parameter	Default Values
<b>Security</b>	
User Name	admin
Password	default
<b>SNMP</b>	
SysName of SNMP	0060E9-XXXXXX
SysLocation of SNMP	Location
SysContact of SNMP	Contact
SNMP	Disable (Unchecked)
Read Community	Public
Write Community	Private
SNMP Trap Server	0.0.0.0

Note: Press the "Reset" button on the front panel for 5 seconds (see Section 4.15.8 and Section 4.16), to restore the MB59XX Series Modbus Gateway to the factory default settings.

## 4 Configuration and Setup

It is strongly recommended for the user to set the Network Parameters through **Device Management Utility**® first. Other device-specific configurations can later be carried out via Atop's user-friendly Web-Interface.

### 4.1 Configuration of Network Parameters through Device Management Utility

First, please install Atop's configuration utility program called **Device Management Utility**® that comes with the Product CD or can be downloaded from or websites ([www.atop.com.tw](http://www.atop.com.tw) or [www.atoponline.com](http://www.atoponline.com)). For more information on how to install **Device Management Utility**®, please refer to the manual that comes in the Product CD. After you start **Device Management Utility**®, if the Modbus Gateway is already connected to the same subnet as your PC, the device can be accessed via broadcast packets. **Device Management Utility**® will automatically detect your Modbus Gateway and list it on **Device Management Utility**®'s window. Alternatively, if you did not see your Modbus Gateway on your network, press "Rescan" icon, a list of devices, including your Modbus Gateway device currently connected to the network will be shown in the window of **Device Management Utility**® as shown in Figure 4.1.

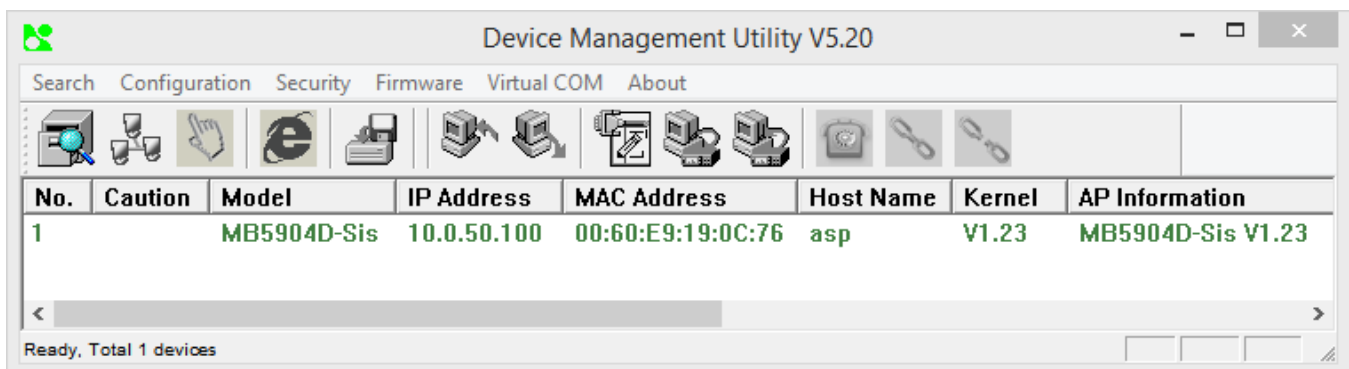


Figure 4.1 List of Device in Device Management Utility

**Note:** This figure is for illustration purpose only. Actual values/settings may vary between devices. Sometime the Modbus Gateway device might not be in the same subnet as your PC; therefore, you will have to use Atop's utility to locate it in your virtual environment. To configure each device, first click to select the desired Modbus Gateway device (default IP: 10.0.50.100) in the list of **Device Management Utility**®, and then click "Configuration → Network..." (or Ctrl+N) menu on **Device Management Utility**® as shown in Figure 4.2 or click on the second icon called **Network** on the menu icon bar, and a pop-up window will appear as shown in Figure 4.3.



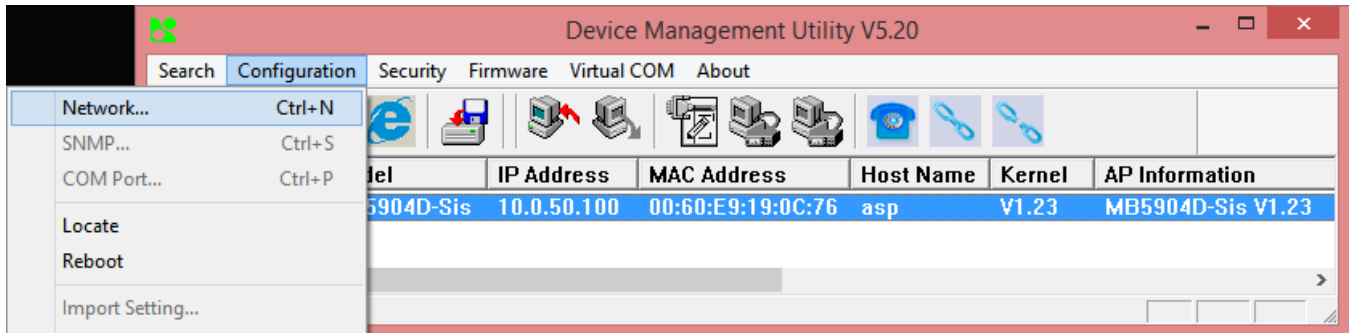


Figure 4.2 Pull-down Menu of Configuration and Network...

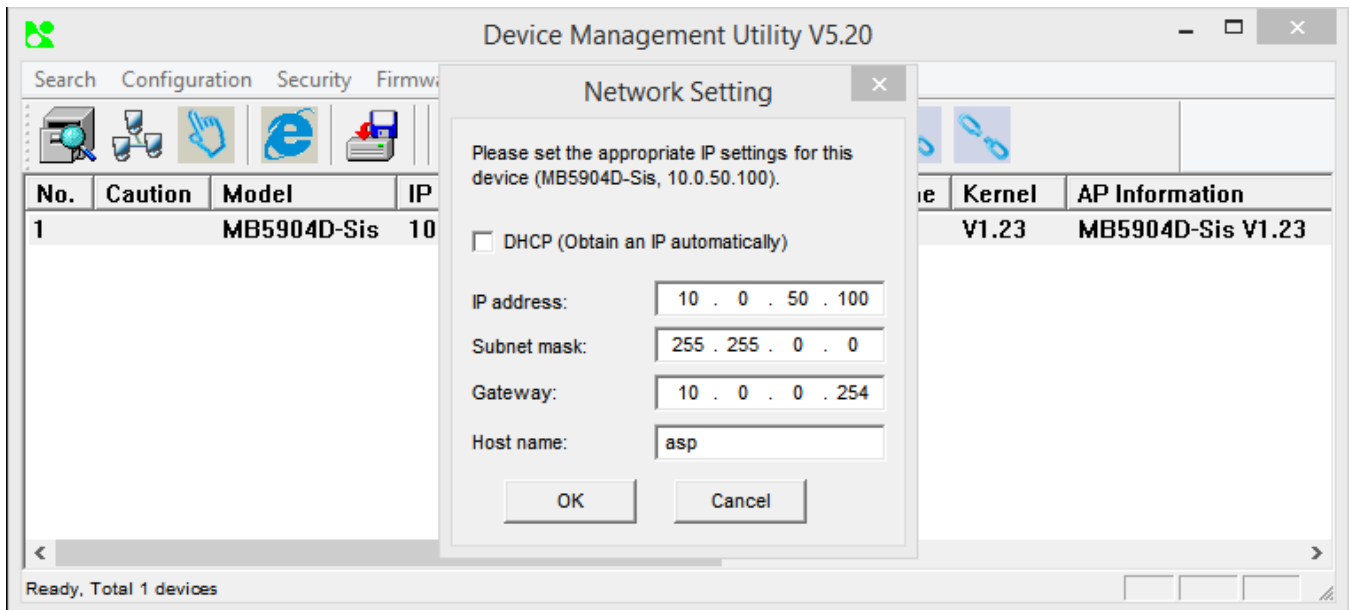


Figure 4.3 Pop-up Window of Network Setting

You may proceed then to change the IP address to avoid any IP address conflict with other hosts on your LAN or to connect the device to your existing LAN as shown in Figure 4.3. The system will prompt you for a credential to authorize the changes. It will ask you for the **Username** and the **Password** as shown in Figure 4.4. The default username is **“admin”**, while the default password **“default”**. After clicking on the **Authorize** button, a notification window will pop-up as shown in Figure 4.5 and some device may be restarted. After the device is restarted (for some model), it will beep twice to indicate that the unit is running normally. Then, the Modbus Gateway can be found on a new IP address. It may be listed automatically by the **Device Management Utility**® or it can be found by clicking on the **“Rescan”** icon.

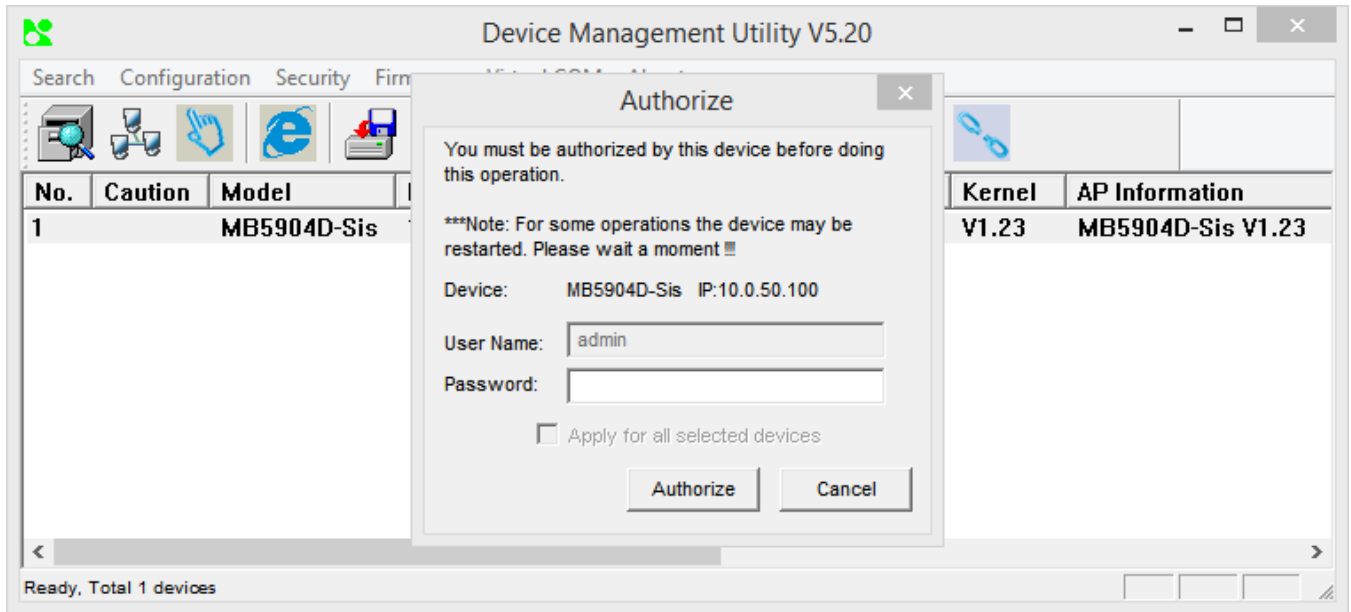


Figure 4.4 Authorization for Changes of Network Setting

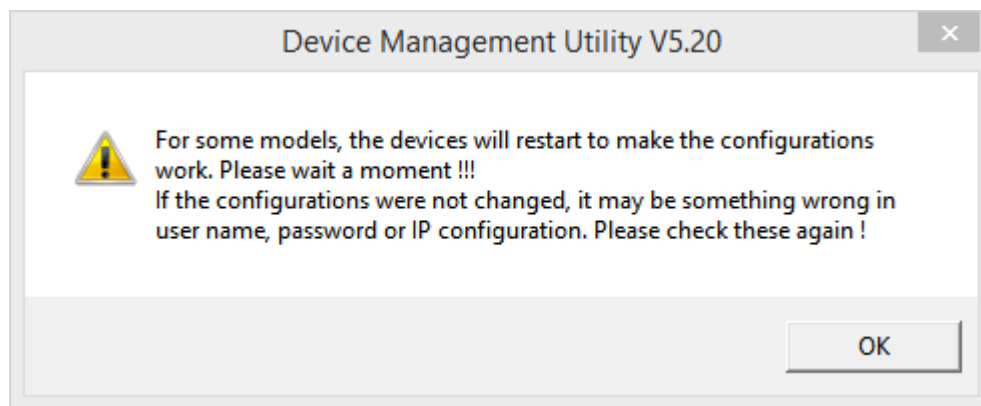


Figure 4.5 Pop-up Notification Window after Authorization

Please consult your system administrator if you do not know your network’s subnet mask and gateway address.

**Note:** If your LAN address begins with 192.168.X.X, please use the LAN2 interface for configuration.

---

## 4.2 Configuring through Web Interface

---

Every MB59XX Modbus Gateway device is equipped with a built-in web server in the firmware. Therefore, the device can be accessed by using a web browser for configuring by entering the device’s IP address (default IP address is 10.0.50.100) in the URL field of your web browser. Figure 4.6 illustrates the overview page of the web interface. Please see Section 0 for default values.



- Overview
- Network
- Basic Settings
- Advanced Settings
- Data Concentrator
- Alert
- VPN
- Spanning Tree
- System
- Restart

## OverView

The general device information of Modbus Gateway.

Model Name	MB5904D-Sis		
Device Information	Kernel	1.23	
	AP	1.23	
Network Information	LAN 1	MAC	00:60:E9:19:0C:76
		IP	10.0.50.99
	LAN 2	MAC	00:60:E9:19:0C:77
		IP	192.168.1.1 (Link down)

Figure 4.6 Overview Web Page of Modbus Gateway

- Overview
- Network
  - IPv4 Settings
  - 3G Settings
- Basic Settings
  - COM Settings
  - VCOM Settings
  - TCP Settings
  - Slave ID Map
  - SMS Template
- Advanced Settings
  - SNMP Settings
  - Modbus
- Alert
  - SMTP Settings
  - Alert Events
- VPN
  - PPTP
  - PPTP Status
  - IPsec Settings
  - IPsec Status
  - OpenVPN Settings
  - OpenVPN Keys
  - OpenVPN Status
- Spanning Tree
  - Setting
  - Bridge Info
  - Port Setting
- System
  - Log Settings
  - System Log
  - Data Log
  - Modbus Statistic
  - Time
  - Security
  - Import/Export
  - Factory Default
  - Restart

Figure 4.7 Map of Configuring Web Page on Modbus Gateway

This approach for configuring your device is the most user-friendly. It is the most recommended and the most common method used for MB59XX Series Modbus Gateway. Please go to its corresponding section for a detailed explanation.

### 4.3 Configuring Automatic IP Assignment with DHCP

A DHCP server can automatically assign IP addresses, Subnet Mask and Network Gateway to LAN1 or LAN2 interface. You can simply check the “**DHCP (Obtain an IP Automatically)**” checkbox in the Network Setting dialog as shown in Figure 4.3 using Atop’s **Device Management Utility**© and then restart the device. Once restarted, the IP address(es) will be configured automatically.

### 4.4 Web Overview

- In this section, current information on the device’s status and settings will be displayed. An example of MB5904D-Sis’s overview page is shown in Figure 4.8. An example on MB5901B (with 3G/4G is provided in the figure below

The general device information of Modbus Gateway.

Model Name	MB5904D-Sis		
Device Information	Kernel	1.23	
	AP	1.23	
Network Information	LAN 1	MAC	00:60:E9:19:0C:76
		IP	10.0.50.99
	LAN 2	MAC	00:60:E9:19:0C:77
		IP	192.168.1.1 (Link down)

Figure 4.8 Overview Web Page

In detail, the following information is given:

- **Model Name**, as its name implies, shows the device’s model
- **Device Information** displays information on the Kernel version as well as the AP version of your Modbus Gateway device.
- **Network Information** shows the Mode in which the Modbus Gateway device is currently operating on (Dual Subnet Mode or Redundancy Mode), and one of the used LAN for Redundancy Mode as shown in Figure 4.8 or both LANs corresponding MAC and IP addresses for Dual Subnet mode.
  - **Dual Subnet Mode:** Two or six Ethernet ports have separate IP addresses and subnets.
  - **Redundancy Mode:** The system will use only one port for data transfer. If the port is disconnected, the whole system will change to another port automatically.

Model Name	SE5901B			
Device Information	Kernel	1.34		
	AP	1.40		
Network Information	LAN 1	MAC	6E:00:00:00:FF:FF	
		IP	192.168.4.22	
	3G	Signal Quality		
		IP	221.120.48.5	

## 4.5 Network Configuration

In this section, **IP address, Subnet Mask, Default (Network) Gateway, Domain Name System (DNS)** and overall connectivity settings of Modbus Gateway device can be accessed as shown in Figure 4.9. For any LAN Interface Settings (i.e. LAN1 or LAN2), you can check the corresponding **DHCP** box to obtain an **IP address, Subnet Mask, and Default (Network) Gateway** automatically. The **Default Gateway Select** box is the next option after the LAN Interface Settings. In this box, you will have option to select (either one of the two radio buttons) which LAN interface (LAN1 or LAN2 in Figure 4.9) will be the default interface in the **Default Gateway Select** box.

LAN 1 Settings				
DHCP	<input type="checkbox"/> Obtain an IP automatically			
IP Address	192	. 168	. 4	. 52
Subnet Mask	255	. 255	. 255	. 0
Default Gateway	192	. 168	. 4	. 254

LAN 2 Settings				
DHCP	<input type="checkbox"/> Obtain an IP automatically			
IP Address	192	. 168	. 1	. 1
Subnet Mask	255	. 255	. 255	. 0
Default Gateway	192	. 168	. 1	. 254

Default Gateway Select	
Default Gateway Select	<input checked="" type="radio"/> LAN1 <input type="radio"/> LAN2

DNS Settings				
DNS 1	0	. 0	. 0	. 0
DNS 2	0	. 0	. 0	. 0

Figure 4.9 Network Web Page

At the lowest box in Figure 4.9, you will have the **DNS Settings** box which allows you to set the **IP addresses** of Domain Name Server 1 (**DNS 1**) and Domain Name Server 2 (**DNS 2**) for redundancy. If the device is connected to the Internet and should connect to other servers over the Internet to get some services such as Network Time Protocol (NTP) server, the user will need to configure the DNS server in order to be able to resolve the host name of the NTP server. Please consult your network administrator or internet service provider (ISP) to obtain local DNS's IP addresses.

## 4.6 3G Settings or 4G Settings

MB5901B has a built-in 3G or 4G cellular network interface depending on your purchased model. On this web page, you can check the status of your cellular connection, set parameters for your cellular (3G or 4G) network

configuration, and set three phone numbers that can reboot the MB5901B. Figure 4.10 shows an example of **3G Settings** web page which is divided into three parts: **3G Information**, **3G Configuration**, and **Phone Number Settings**.

**Note:** The user is required to insert a valid SIM card of your local cellular network operator (3G or 4G) into the SIM card socket inside the chassis of MB5901B.

Network > 3G Settings

3G Information	
Connection Status	Ready
PIN Status	Ready
IP Address	221.120.48.5
Modem Status	E-UTRAN - Chunghwa Telecom
Signal Quality	<div style="width: 90%; background-color: green; display: inline-block;"></div> 90%
IMSI	466924252075481

3G Information	
Auto Connect	<input checked="" type="checkbox"/> Enable (Dial When Boot Up)
APN	<input type="text" value="public"/>
PIN	<input checked="" type="checkbox"/> Enable <input type="text"/> <input type="checkbox"/> Hide
Reconnect On Dial Failure	<input checked="" type="checkbox"/> Enable

Figure 4.10 3G Settings Web Page

Under the **3G Information** part, you can inspect the following information of your cellular network interface: **Connection Status**, **PIN Status**, **IP Address**, **Modem Status**, and **Signal Quality**. Table 4.1 describes each field under the 3G Information part. Under the 3G Information part, there are **Connect** button and **Disconnect** button that allow you to control the cellular connection.

Table 4.1 Description of 3G Information

Field Name	Description	Possible Values
<b>Connection Status</b>	Reports the status of cellular data connection	No Sim Card Inserted, Disable Disconnect, Connect, Dialling
<b>PIN Status</b>	Reports the status of the PIN	READY or some wrong!
<b>IP Address</b>	IP address assigned by the cellular operator	-
<b>Modem Status</b>	Reports the status of cellular modem	3G-UTRAN, E-UTRAN,...,Unknown Status

Field Name	Description	Possible Values
Signal Quality	Indicates the cellular network signal strength in percentage and bar graph.	0% up to 100%
IMSI	The International Mobile Subscriber Identity or IMSI is used to identify the user of a cellular network and is a unique identification associated with all cellular networks. It is stored as a 64 bit field and is sent by the phone to the network	64-bit number

Under the **3G Configuration** part, you can configure how the cellular connection is established. First option is the **Auto Connect**. You can check the box in front of **Enable (Dial When Boot Up)** to let the MB5901B automatically dials 3G Modem when the device finished booting up. Next, the **APN** option which is the Access Point Name used for establishing the cellular connection. This name is depended on your local cellular network operator's recommendation. The default value is "internet". Next, the **PIN** or Personal Identification Number option is the 4-digit code used to unlock the SIM of the 3G Modem on the MB5901B. You can enable this PIN security by checking the **Enable** box. After enabling the **PIN** option, you will be able to enter the **PIN Code** in the textbox. Note that the default display of the textbox is to hide the code. You have an option to uncheck the box in front of **Hide** to see the PIN Code. Finally, the last option is to enable the **Reconnect on Dial Failure** option by checking the **Enable** box. The default for this option is disable.

After finishing the network settings configuration, please click the **Save Configuration** button to save all changes that have been made. A pop-up window will show up with "**Please wait for a while...**" message. Then, the web browser will return to the **3G Settings/4G Settings** web page again.

## 4.7 Spanning Tree

Spanning tree functionality is supported by Atop's MB59XX Industrial Device Server series. However, MB59XX is only an end device in a network; therefore, it only has the receiving function of spanning tree. Generally, the **Spanning Tree Protocol (STP)** provides a function to prevent switching loops and broadcast radiation at the OSI layer 2. A switching loop occurs in a network when there are multiple connections or redundant paths between two network switches or at least two ports are connected on both sides of the two network switches. The switching loop can create a broadcast radiation, which is the accumulation of broadcast and multicast traffics in a computer network. As broadcast and multicast messages are forwarded by bridges/switches to every port, the bridges/switches will repeatedly rebroadcast the broadcast messages, and this accumulation of traffic can flood the network. STP creates a spanning tree topology and disables those links of the network that are not part of the spanning tree, which leaves only a single active path between two nodes. This function can avoid flooding and increase network efficiency. Therefore, MB59XX deploys spanning tree as a tool when the users set up connection or port redundancy or fault-tolerance in their network.

**RSTP (Rapid Spanning Tree Protocol)**, IEEE 802.1W, is the only mode of spanning tree supported in MB59XX. It is an evolution of the STP (IEEE 802.1D standard), but it is still backwards compatible with standard STP. RSTP has the advantage over the STP. When there is a topology change such as link failure in the network, the RSTP will converge significantly faster to a new spanning tree topology. RSTP improves convergence on point-to-point links by reducing the Max-Age time to 3 times Hello interval, removing the STP listening state, and exchanging a handshake between two switches to quickly transition the port to forwarding state.

The **Spanning Tree** menu and its sub-menus can be found on left frame of the web interface of MB59XX. The list of **Spanning Tree** menu is shown in Figure 4.11. The sub-menus und the **Spanning Tree** are **Setting**, **Bridge Info**, and **Port Setting**. Each of this sub-menu will be described in the following subsections.

- Spanning Tree
  - Setting
  - Bridge Info
  - Port Setting

Figure 4.11 Spanning Tree Menu

### 4.7.1 Spanning Tree's Setting

Figure 4.12 shows an example of **Setting** web page of **Spanning Tree** menu. The **Spanning Tree Setting** page is divided into three parts which are **Mode Setting**, **Main Setting**, and **Port Setting**. For MB59XX, the user can only select one spanning tree mode, which is the **RSTP (Rapid Spanning Tree Protocol)** under the **Mode Setting**. The user can enable or disable spanning tree protocol under the **Main Setting** by checking the box behind the **Enabled** option. Note that when Enabled option is checked, the rest of the fields will become active. Then, the user can configure the **Priority**, **Maximum Age**, **Hello Time**, and **Forward Delay** or can leave the default setting values for each of these options. Under the **Port Setting** part, the user can select two different ports for **Primary Port** and **Secondary Port** options from the drop-down list. After configuring the spanning tree's parameters, please click **Update** button at the end of the page to allow the change to take effect. The description of each parameter is summarized in Table.



- Overview
- Network
  - Basic Settings
  - Advanced Settings
  - Data Concentrator
  - Alert
  - VPN
  - Spanning Tree
    - Setting
    - Bridge Info
    - Port Setting
  - System
  - Restart

### Spanning Tree > Setting

Mode Setting	
Mode	RSTP ▼
Main Setting	
NOTE: Enable spanning-tree function maybe cause the Web disconnect more than "Forward Delay Time x 2" seconds.	
Enable	<input type="checkbox"/> Enable
Priority (0~61440)	32768
Maximum Age (6~40)	20
Hello Time (In Seconds)	2
Forward Delay (In Second, 4~30)	15
Port Setting	
Primary Port	▼
Secondary Port	▼

Figure 4.12 Setting Web Page of Spanning Tree

Table 4.2 Descriptions of Spanning Tree Parameters

Label	Description	Default Factory
<b>Mode</b>	Mode of Spanning Tree Protocol to be enabled on MB59XX	RSTP
<b>Enabled</b>	Check the box to enable spanning tree functionality.	Disable
<b>Priority</b>	Enter a number to set the device priority. The value is in between 0 and 61440. The lower number gives higher priority.	32768
<b>Maximum Age</b>	Maximum expected arrival time for a hello message. It should be longer than Hello Time.	20
<b>Hello Time</b>	Hello time interval is given in seconds. The value is in between 1 to 10.	2
<b>Forward Delay</b>	Specify the time spent in the listening and learning states in seconds. The value is in between 4 to 30.	15
<b>Primary Port</b>	Spanning tree's primary port	LAN1
<b>Secondary Port</b>	Spanning tree's secondary port	LAN2

Note: To disable spanning tree function on MB59XX, the user can uncheck the **Enable** option and then click **Update** button.

#### 4.7.2 Spanning Tree's Bridge Info

**Bridge Info** (information) provides the current configured parameters of spanning tree protocol as shown in Figure 4.13. Note that this page will not display any data on all fields if the RSTP was not enabled in the Spanning Tree's **Setting** web page. The information is further divided into two parts: **Root Information** and **Topology Information**.

To check the latest information, please click on the **Refresh** button at the end of the page. Table 4.3 and Table 4.4 summarize the descriptions of each entry in the root information table and topology information table, respectively.

**Spanning Tree > Bridge Information**

NOTE: If RSTP isn't enabled, all fields would be empty.

Root Information	
Root MAC Address	7c:66:9d:1d:c5:cc
Root Priority	32768
Root Path Cost	0
Root Maximum Age	20
Root Hello Time	2
Root Forward Delay	15
Topology Information	
Root Port	N/A
Num. Of Topology Change	0
Last TC Time Ago	50

Refresh

Figure 4.13 Bridge Info Web Page of Spanning Tree

Table 4.3 Bridge's Root Information

Label	Description	Factory Default
<b>Root MAC Address</b>	MAC address of the root of the spanning tree	-
<b>Root Priority</b>	Root's priority value: The device with highest priority has the lowest priority value and it will be elected as the root of the spanning tree.	0
<b>Root Path Cost</b>	Root's path cost is calculated from the data rate of the device's port.	0
<b>Root Maximum Age</b>	Root's maximum age is the maximum amount of time that the device will maintain protocol information received on a link.	0
<b>Root Hello Time</b>	Root's hello time which is the time interval for RSTP to send out a hello message to the neighboring nodes to detect any change in the topology.	0
<b>Root Forward Delay</b>	Root's forward delay is the duration that the switch will be in learning and listening states before a link begins forwarding .	0

Table 4.4 Bridge's Topology Information

Label	Description	Factory Default
Root Port	A forwarding port that is the best port from non-root bridge/switch (MB59XX) to root bridge/switch. Note that for a root switch there is no root port.	-
Num. of Topology Change	The total number of spanning topology change over time.	0
Last TC time ago	The duration of time since last spanning topology change.	-

### 4.7.3 Spanning Tree's Port Setting

Spanning Tree's **Port Setting** shows the configured value of spanning tree protocol for each port, as shown in Figure 4.14 and Figure 4.15. The configured information for each port is **state**, **role**, **path cost**, **path priority**, **link type**, **edge**, **cost**, and **designated information**. To check the latest update on the statistics, please click on the **Refresh** button. Table 4.5 summarizes the descriptions of spanning three port setting. If **Spanning Tree** is enabled, the table of **Spanning Tree Port Stting** becomes editable and four parameters (**Path Cost (Config)**, path priority (**Pri**), **Link Type (Config)** and **Edge (Config)**) can be adjusted on this page. The user can use the **Update** button to save the settings.

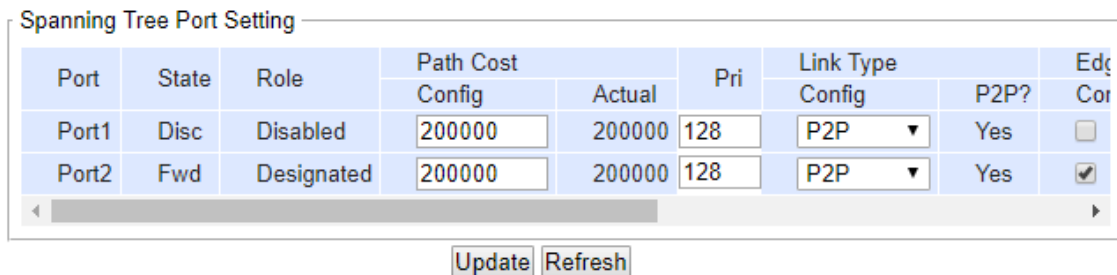


Figure 4.14 Spanning Tree Port Setting (Part 1)

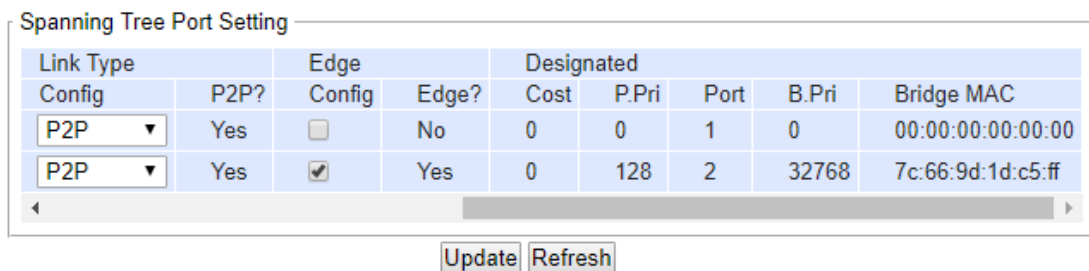


Figure 4.15 Spanning Tree Port Setting (Part 2)

Table 4.5 Descriptions of Spanning Tree Port Setting

Label	Description	Factory Default
Port	The name of the MB59XX's port	-
State	State of the port: 'Disc': Discarding - No user data is sent over the port.	N/A

		<p><b>'Lrn'</b>: Learning - The port is not forwarding frames yet, but it is populating its MAC Address Table.</p> <p><b>'Fwd'</b>: Forwarding - The port is fully operational.</p>	
<b>Role</b>		<p>Non-STP or STP</p> <p>RSTP bridge port roles:</p> <p><b>'Root'</b> - A forwarding port that is the best port from non-root bridge to root bridge.</p> <p><b>'Designated'</b> - A forwarding port for every LAN segment.</p> <p><b>'Alternate'</b> - An alternate path to the root bridge. This path is different from using the root port.</p> <p><b>'Backup'</b> - A backup/redundant path to a segment whose another bridge port already connects.</p> <p><b>'Disabled'</b> - Note strictly part of STP, a network administrator can manually disable a port.</p>	Non-STP
<b>Path Cost</b>	<b>Config</b>	Setting the path cost for each switch port	
	<b>Actual</b>	Setting path cost (default: 0, meaning that using the system default value (depending on link speed))	0
		The actual value path cost (For RSTP, please see Note 1 below and table.)	0
<b>Pri</b>		Setting the port priority, used in the Port ID field of BPDU packet, value = 16 x N, (N:0~15) See Note 2 below.	128
<b>Link Type</b>	<b>Config</b>	<p>The connection between two or more switches (for RSTP)</p> <p>Setting of the Link Type</p> <p><b>P2P</b>: A port that operates in full-duplex mode is assumed to be point-to-point link.</p> <p><b>Non-P2P</b>: A half-duplex port (through a hub)</p> <p><b>Auto</b>: Detect link type automatically</p>	Auto
	<b>P2P?</b>	<p><b>Yes</b>: This port is a Point-to-Point (P2P).</p> <p><b>No</b>: This port is not Point-to-Point (Non-P2P).</p>	No
<b>Edge</b>	<b>Config</b>	<p>Edge port is a port which no other STP/RSTP switch connect to (for RSTP). An edge port can be set to forwarding state directly.</p> <p>Edge functional is set:</p> <p><b>Yes or No</b></p>	No
	<b>Edge?</b>	<p><b>Yes</b>: This port is an edge port.</p> <p><b>No</b>: This port is not an edge port.</p>	No
<b>Designated</b>		This shows some information of the best BPDU packet through this port.	
	<b>Cost</b>	Root path cost	0
	<b>P. Pri. (Port Priority)</b>	Port priority (high 4 bits of the Port ID), Value = 16 x N, (N: 0~15)	128
	<b>Port</b>	Interface number (lower 12 bits of the Port ID)	-
	<b>Bri. Pri. (Bridge Priority)</b>	Bridge priority, (value = 4096 x N, (N: 0~15)	32768
	<b>Bridge MAC</b>	The MAC address of the switch which sent this BPDU	-

**Note:** In general, the path cost is dependent on the link speed.

Table 4.6 lists the default values of path cost for RSTP.

Table 4.6 Default Path Cost for RSTP

Data Rate	RSTP Cost (802.1W-2004)
4 Mbits/s	5,000,000

Data Rate	RSTP Cost (802.1W-2004)
10 Mbits/s	2,000,000
16 Mbits/s	1,250,000
100 Mbits/s	200,000
1 Gbits/s	20,000
2 Gbits/s	10,000
10 Gbits/s	2,000

2. The sequence of events to determine the best received BPDU (which is the best path to the root).

- Lowest root bridge ID determines the root bridge.
- Lowest cost to the root bridge favors the upstream switch with the least cost to root.
- Lowest sender bridge ID serves as a tie breaker if multiple upstream switches have equal cost to root.
- Lowest sender port ID serves as a tie breaker if a switch has multiple (non-Ether channel) links to a single upstream switch.

Bridge ID = priority (4 bits) + locally assigned system ID extension (12 bits) + ID [MAC Address] 48 bits

The default bridge priority is 32768.

Port ID = priority (4 bits) + ID (Interface number) (12 bits)

The default port priority is 128.

## 4.8 Basic Settings

In this section, the term “**Modbus Gateway device**” will be used to refer to the **MB59XX series** and the term “**serial device**” to refer to any Modbus device that connect to Modbus Gateway via COM, VCOM, or TCP connections. In any Modbus network, there are two types of Modbus devices: Modbus Master and Modbus Slave. The Modbus Master will send a request message to a Modbus Slave. Then, the Modbus Slave will respond to the Modbus Master’s request. A Modbus device (serial device) that is connected to the MB59XX series Modbus Gateway device will either assume a role of Modbus Master or Modbus Slave. The basic settings in this section will address how to configure the role of the serial device in your Modbus Gateway device and its serial communication parameters. The term “**Operation Mode**” will be used to refer to the combination of role (Master or Slave) and the message or data transfer types (RTU/ASCII/TCP) of the Modbus protocol used by the serial device.

### 4.8.1 COM Settings

This section shows how to set up the physical ports of the Modbus Gateway device (COM ports or serial ports that serial devices are connected to). The available number of COM ports may vary according to the chosen Modbus Gateway model. Figure 4.16 shows the COM Settings web page in which COM1 port is shown with its **Operation Mode** under **Modbus Setting** and **Serial Configuration** settings. These settings will configure the role of the serial device through the **Operation Mode** and the serial communication parameters of that serial device through the **Serial Configuration** settings.

#### Basic Settings > COM Settings

To configure COM 1 port parameters.

Modbus Setting	
Operation Mode	RTU Slave ▼
Serial Configuration	
Interface	<input checked="" type="radio"/> RS232 <input type="radio"/> RS422 <input type="radio"/> RS485(2-Wire)
Baud Rate	1200 ▼ bps
Parity	<input checked="" type="radio"/> None <input type="radio"/> Odd <input type="radio"/> Even <input type="radio"/> Mark <input type="radio"/> Space
Data Bits	<input type="radio"/> 7 bits <input checked="" type="radio"/> 8 bits
Stop Bits	<input checked="" type="radio"/> 1 bit <input type="radio"/> 2 bits
Flow Control	<input checked="" type="radio"/> None <input type="radio"/> Xon/Xoff <input type="radio"/> RTS/CTS
<input type="checkbox"/> Apply To All Serial Ports	

COM Number	Operation Mode	Interface	Baud Rate	Parity	Data Bits	Stop Bits	Flow Control
01	RTU Slave	RS232	300	None	8	1	None

Figure 4.16 COM Settings Web Page

### 4.8.2 Operation Mode

To set the **Operation Mode** of the serial device that is connected to the Modbus Gateway through a COM port, use the pull-down menu to select among the following modes under **Modbus Setting**.

- **RTU Slave:** The serial device is working as a Modbus Slave node: the serial device will wait, accept request from, and response to its Modbus Master node. Data transfer is done in RTU format.
- **RTU Master:** The serial device is working as a Modbus Master node: the serial device will issue commands to or query Modbus slave nodes. Data transfer is done in RTU format.
- **ASCII Slave:** The serial device is working as a Modbus Slave node: the serial device will wait, accept request from, and response to its Modbus Master node. Data transfer is done in ASCII format.
- **ASCII Master:** The serial device is working as a Modbus Master node: the serial device will issue commands to or query Modbus Slave nodes. Data transfer is done in ASCII format.

### 4.8.3 Serial Settings

This section summarizes the options of serial communication parameters used between the serial device and the Modbus Gateway device over the selected COM port.

- RS-232/RS-422/RS-485 (2-wire) Software Selectable
- Baud-rate: 110 bps ~ 921600 bps Software Selectable
- Parity: None, Odd, Even, Mark, or Space
- Data Bits: 5, 6, 7 or 8
- Stop Bits: 1 or 2 Software Selectable
- Flow Control: None, Software Xon/Xoff, Hardware RTS/CTS
- Receiver Resistor: On or Off
- Pull Resistor: 1K  $\Omega$  or 100K  $\Omega$

**Apply to all Serial Ports** (checkbox): The settings can be chosen to apply to all serial ports if needed by checking the last checkbox on the options.

After finish the **COM Settings** configuration, click the **Save Configuration** button to save all changes that have been made. A **Save Successfully** message will show up as shown in Figure 4.17 and after a short period of time the web browser will be redirected back to **COM Settings** page (Figure 4.16).



Figure 4.17 Save Successfully Message

### 4.8.4 VCOM Settings

These settings will generate a virtual Serial (VCOM) port within the Modbus Gateway device based on a TCP network connection. VCOM is a **TCP connection** which is encoded in an Atop Technologies' exclusive private protocol. MB59XX series Modbus Gateway can only run as a TCP server which will be waiting for a connection request from a TCP client (a serial device).

Figure 4.18 shows the page of VCOM Settings in which the VCOM number 1 is set as an RTU Slave. This means that a device that is connected to this VCOM port on the Modbus Gateway will be a Modbus Slave node and communicate with a Modbus Master node using Modbus/RTU protocol. It is an interface concept that allows Modbus Slave devices to be connected via TCP connection by using VCOM from a PC (for example). If a VCOM

setting is needed, proceed to select **Basic Settings** → **VCOM Settings** and check the VCOM's “**Enable**” box to allow configuration on the selected TCP's port of the Modbus Gateway device.

- **VCOM Port:** Using a TCP connection, the Modbus Gateway device (TCP server) listens to any TCP Clients (VCOM Clients) connecting (using Serial-IP) to its ports. The VCOM Port or the port of the TCP connection can be configured as a number between 1 and 65535. The default VCOM Port number is 4660.

**Note:** For Windows operating system, a Serial/IP software is required to use this feature. A restrictive **Serial/IP Redirector** software is installed along with Atop's **Device Management Utility**®. The user can access the Serial/IP software through **Virtual COM** → **Serial/IP Tools** menu.

**Basic Settings > VCOM Settings**

To configure VCOM  parameters.

VCOM	<input type="checkbox"/> Enable
VCOM Port	<input type="text" value="4660"/> (1~65535, default=4660)
VCOM Mode	<input type="text" value="RTU Slave"/> ▼
VCOM Inactivity Time Out	<input type="text" value="0"/> (0~36000 seconds)
<input type="checkbox"/> Apply to All VCOMs	

Figure 4.18 VCOM Settings Web Page

- **VCOM Mode:** This setting is a pull-down menu in which the user can select the **Operation Mode** of the devices connected through this VCOM port as shown in Figure 4.19. Its definition is the same to the one given in Section 4.8.2. Here the user can choose whether device conforms to a RTU or an ASCII message format and can select whether the device is either Modbus Slave node or Modbus Master Node. Figure 4.18 depicts the **RTU Slave** mode. So, the devices connected through VCOM 1 port will assume Modbus Slave role and communicate using Modbus/RTU protocol. If a Master mode (either RTU or ASCII) is selected, the options for the Master mode will be the same as the Slave mode. The only difference is the device's function.

VCOM	<input type="checkbox"/> Enable
VCOM Port	<input type="text" value="4660"/> (1~65535, default=4660)
VCOM Mode	<input type="text" value="RTU Slave"/> ▼ <ul style="list-style-type: none"> <li>RTU Slave</li> <li>RTU Master</li> <li>ASCII Slave</li> <li>ASCII Master</li> </ul>
VCOM Inactivity Time Out	<input type="text" value="0"/> (0~36000 seconds)
<input type="checkbox"/> Apply to All VCOMs	

Figure 4.19 Pull-down Menu of VCOM Mode

- **VCOM inactivity Time Out:** This is a period of time allowed between actions. This setting can be set with a maximum of 600 minutes (36000 seconds) or 10 hours. If there is no activity within this period, the VCOM connection (TCP connection) will be automatically closed by the Modbus Gateway.

These settings can be applied to All VCOMs if needed by checking the last checkbox on the options. Figure 4.20 highlights the checkbox for applying the settings to all VCOMs.



**Basic Settings > VCOM Settings**

To configure VCOM  parameters.

VCOM	<input checked="" type="checkbox"/> Enable
VCOM Port	<input type="text" value="4660"/> (1~65535, default=4660)
VCOM Mode	<input type="text" value="RTU Slave"/> ▼
VCOM Inactivity Time Out	<input type="text" value="0"/> (0~36000 seconds)
<input checked="" type="checkbox"/> Apply to All VCOMs	

Save Configuration

Figure 4.20 Check Box for Applying the Settings to All VCOMSs

After finishing configuring the **VCOM Settings**, click on **Save Configuration** button to save all changes that have been made. A **Save Successfully** message will show up, then the web browser will be redirected back to the **VCOM Settings** page.

### 4.8.5 TCP Settings

A device using Modbus/TCP connection, which communicates over the internet, can be set in this section. If a Modbus/TCP connection is needed, navigate to **Basic Settings** → **TCP Settings**, then choose whether or not to enable TCP by checking on the “**Enable**” check box. Figure 4.21 shows the Modbus TCP Settings page in which a device connected to this Modbus Gateway device is chosen to be run in **TCP Slave Operation Mode**. The device will take the Modbus Slave role and communicate using Modbus/TCP protocol.

#### Basic Settings > TCP Settings

To configure TCP  parameters.

Add New Modbus TCP					
TCP	<input checked="" type="checkbox"/>	Enable			
Operation Mode	<input checked="" type="radio"/>	TCP Slave	<input type="radio"/>	TCP Master	
Remote IP Address	<input type="text" value="192"/>	<input type="text" value="168"/>	<input type="text" value="4"/>	<input type="text" value="60"/>	
TCP Port	<input type="text" value="504"/>	(1~65535, default=502)			
TCP Inactivity Time Out	<input type="text" value="0"/>	(0~36000 seconds)			
<input type="button" value="Save Configuration"/>					
<input type="checkbox"/>	TCP No.	Operation Mode	Remote IP Address	TCP Port	Inactivity Time Out
<input type="checkbox"/>	01	TCP Slave	192.168.4.60	504	0 seconds
<input type="checkbox"/>	16	TCP Master		502	0 seconds
<input type="button" value="Remove"/>					

Figure 4.21 Modbus TCP Settings Web Page with TCP Slave Mode

- Operation Mode:** There are two radio buttons in this setting: TCP Slave and TCP Master. When running on TCP Slave mode (the TCP Slave radio button is checked) as shown in Figure 4.21, the device will wait to receive Modbus requests from a Modbus Master. The data transmission is done under a Modbus/TCP protocol format. This means that the device will operate as a TCP Server that opens its TCP port to accept connections. The TCP Master option will be described at the end of this section.
- Remote IP Address:** This setting shows the IP address of the device which is a Modbus slave node. This address refers to the IP address that belongs to the device that is going to be controlled from the MB59XX Series Modbus Gateway device. This device can also be considered as a TCP server of whom it is needed to know its IP address. This option will disappear when the operation mode as TCP Master is selected, because in that mode the device will be running as a TCP Client which does not require to publish its IP address.
- TCP Port:** This setting shows the TCP port number of the device (or Modbus Slave node in Figure 4.21) which can be a number in between 1 and 65535. The default port number is 502.
- TCP inactivity Time Out:** A time out period, which is the maximum period of time allowed between actions, can be set as well. This setting has a maximum duration of 600 minutes (36000 seconds) or 10 hours. If no activity has occurred within this period, the Modbus/TCP connection will be automatically terminated by the Modbus Gateway.

At the end of the **TCP Settings** page shown in Figure 4.21, a list of all configured Modbus/TCP connections with TCP No., Operation Mode, Remote IP Address, TCP Port and TCP Inactivity Time Out information will appear. The user will have the ability to remove any Modbus/TCP connection settings by checking on box in front of the record of the desired TCP settings and clicking on the **Remove** button. To remove all TCP connections, simply check the box on the header row of the list to select all items and click remove.

Alternatively, the Modbus/TCP connection can be configured to run in **TCP Master Operation Mode**. This means that the device will be a Modbus Master node and communicate using Modbus/TCP protocol. Figure 4.22 shows the TCP Master Settings. When **TCP Master Operation Mode** is selected, the **Remote IP address** setting will disappear because the device will be running as a TCP Client. Next, the **TCP Port** is the port through which the signal is going to be relayed upon by the Modbus Gateway. Once again, there is a **TCP Inactivity Time Out** with the same maximum value of 10 hours as stated in the previous mode.

### Basic Settings > TCP Settings

To configure TCP  parameters.

Add New Modbus TCP	
TCP	<input checked="" type="checkbox"/> Enable
Operation Mode	<input type="radio"/> TCP Slave <input checked="" type="radio"/> TCP Master
TCP Port	<input type="text" value="502"/> (1~65535, default=502)
TCP Inactivity Time Out	<input type="text" value="0"/> (0~36000 seconds)

Save Configuration

<input type="checkbox"/>	TCP No.	Operation Mode	Remote IP Address	TCP Port	Inactivity Time Out
<input type="checkbox"/>	16	TCP Master		502	0 seconds

Remove

Figure 4.22 Modbus TCP Setting Page with TCP Master Operation Mode Selection

After **TCP Settings** configuration is finished, click on **Save Configuration** button to save all changes that have been made. A **Save Successfully** message will show up, and the web browser will be redirected back to the **TCP Settings** page.

#### 4.8.6 Slave ID Map

The system uses the Modbus ID to route Modbus' request commands from a Modbus master node to the related Modbus Slave node. It is important to define ID mapping for each Modbus Slave node. For every Modbus Slave node, there should be a correct Virtual ID (Alias ID) and Real ID defined in the mapping. Figure 4.23 shows the Slave ID Map settings. To configure Slave 2's parameters, check the **Enable** box to enable Slave. Then, select the corresponding Slave interface.

- **Slave Interface:** When a port is set to Modbus slave mode, a slave interface will be created. Select a radio button of a port number behind the **Slave Interface**, which can be any one of the listed **COM/VCOM/TCP ports**.
- **Slave ID Setting Mode:** Next, select the mapping between real slave ID and Virtual ID to modify the slave ID setting as needed.
  - **Slave ID Virtual** maps a virtual ID to a real ID by the **Slave ID Count**. Figure 4.23 depicts Slave ID settings of COM02 to have real slave ID from 1 to 16 mapped from virtual ID 17 to 32.
    - **Slave ID Virtual** refers to a Virtual ID for the reading Master node.
    - **Slave ID Real** is the starting real ID within this interface (COM02 in Figure 4.23).
    - **Slave ID Count** is the number of slave devices in this interface that are mapped.

#### Basic Settings > Slave ID Map

To configure Slave  parameters.

Slave ID Settings	
Slave	<input checked="" type="checkbox"/> Enable
Slave Interface	<input type="radio"/> COM <input type="radio"/> COM01 <input checked="" type="radio"/> COM02 <input type="radio"/> COM03 <input type="radio"/> COM04
Slave ID Setting	Slave ID Virtual: <input type="text" value="17"/> Slave ID Real: <input type="text" value="1"/> Slave ID Count: <input type="text" value="16"/>

	Entry No.	Protocol	Source	Slave ID Range (Virtual<->Real)
<input type="checkbox"/>	01	Modbus/RTU	COM1	001 - 016 <-> 001 - 016
<input type="checkbox"/>	02	Modbus/RTU	COM2	017 - 032 <-> 001 - 016
<input type="checkbox"/>	03	Modbus/RTU	COM3	033 - 048 <-> 001 - 016
<input type="checkbox"/>	04	Modbus/RTU	COM4	049 - 064 <-> 001 - 016

Figure 4.23 Slave ID Map Page with Slave ID Setting in Alias Mode

**Note:** Master and Slave IDs can be set on COM, VCOM, and TCP. However, COM works only with serial ports while TCP and VCOM operate via Ethernet ports.

After finishing configuring the **Slave ID Settings**, click the **Save Configuration** button to save all changes that have been made. A **Save Successfully** message will show up, then the web browser will be redirected back to the **Slave ID Settings** page.

Below the **Slave ID Settings** box, there is a list of mapping entries as shown in Figure 4.24 in which each line will summarize an **Entry No.**, a Modbus **Protocol**, a **Source**, a Slave ID Setting **Mode**, and the **Slave ID Range (Virtual <-> Real)**. Check the box in front of each entry to select that entry. Then, click **Remove** button to remove that particular entry from the **Slave ID Map**. To remove all entries, check on the box in front of the header line and click **Remove** button.

<input type="checkbox"/>	Entry No.	Protocol	Source	Slave ID Range (Virtual<->Real)
<input type="checkbox"/>	01	Modbus/RTU	COM1	001 - 016 <-> 001 - 016
<input type="checkbox"/>	02	Modbus/RTU	COM2	017 - 032 <-> 001 - 016
<input type="checkbox"/>	03	Modbus/RTU	COM3	033 - 048 <-> 001 - 016
<input type="checkbox"/>	04	Modbus/RTU	COM4	049 - 064 <-> 001 - 016

Figure 4.24 Slave ID Map Web Page with Slave ID Setting in Offset Mode

### 4.8.7 SMS Template

MB5901B allows the device to get data from a Modbus slave connected to the device. Setting up SMS function is easy and straightforward. Since this function requires cellular connectivity, it is available on MB5901B only. Settings require the following steps to be carried out:

- 1) Define the alias command that the device will recognize as a specific command coming from SMS (NB- all other SMS commands will be ignored)
- 2) Associate to such command the Modbus Starting address, the quantity and the formatting method of the data that will be returned to the same number. Figure 4.25 below shows a configuration example.



- Overview
- Network
- Basic Settings
  - COM Settings
  - VCOM Settings
  - TCP Settings
  - Slave ID Map
  - SMS Template**
- Advanced Settings
- Data Concentrator
- Alert
- VPN
- System
  - Restart

#### Basic Settings > SMS Template

SMS To Modbus Template Settings

Alias Command	<input type="text"/>	Type	Coils <span style="float: right;">▼</span>
Starting Address	<input type="text"/>	Quantity	1 <span style="float: right;">▼</span>
Req/Rep Format	Hex <span style="float: right;">▼</span>	Prefix Msg	<input type="text"/>
Postfix Msg	<input type="text"/>		

Delete	Alias Cmd	Type	Start Address	Format	Prefix	Postfix	Message/Value Pair
<input type="checkbox"/>	V	Holding Registers	0	Floating	Voltage	V	

Figure 4.25 SMS Template – configuration interface – Hex, Decimal or Floating reporting format

In the example shown in above Figure 4.25 and already configured, the alias command “V” is associated to the reading of 2 Holding Registers starting from Address 0 and returned in a floating format, with Prefix “Voltage” and Postfix “V”. If the voltage measured is 6.45VDC, and 6 is stored in address 0 and 45 is stored in Address 1, the behavior of the device will be the following:

- Receive the SMS containing “V” from any cell phone number
- Retrieve the data and format it in the proper format
- Reply to the SMS with the following text: “Voltage 6.45 V”

Table 4.7 below explains the meaning of the configuration fields, if “Hex, Dec, Floating” is selected.

**Note:** if “string” is selected as an output format, then it’s necessary to associate a register value to a string. This is possible. For a more detailed explanation, please refer to Table 4.8 and Figure 4.26.

Table 4.7 SMS Template - Settings

Item	Description	Value setting
Alias command	The alias command makes it possible to execute Modbus command by entering a pre-set string (i.e., sequence of characters).	<i>Blank</i> Max. 6 characters (case sensitive)
Type	Modbus function code.	<b>01</b> - Read Coil
Starting Address	The starting of memory address.	<i>Blank</i> (Numeric 0-65535)
Quantity	The quantity of this command.	1 (Numeric 1~2)
Req/Rep Format	The data type of request and response.	<i>Hex</i> (Hex, Dec, String, Floating) (Hex will be raw data) (Dec will be a signed integer) (Floating will be XX.YY format)
Prefix Msg	The prefix string of response message.	<i>Blank</i> - Max. 16 characters
Postfix Msg	The postfix string of response message.	<i>Blank</i> - Max. 6 characters

If “String” is selected as an output format, then it’s necessary to associate a register value to an output string. The fields shown in Figure 4.26 and explained in Table 4.8 will Pop-up.

Table 4.8 SMS Template settings - Message/Value Pair

Item	Description	Default setting
Message 1/ Message2	The SMS message represented by the corresponding value 1 and value 2	<i>Blank</i> Max. 6 characters (case sensitive)
Value 1/ Value2	The corresponding value of the SMS message 1 and message 2.	<i>Blank</i>

The screenshot shows a configuration window titled "Message/Value Pair". It contains two rows of input fields. The first row has "Message 1" on the left and "Value 1" on the right, each followed by an empty text input box. The second row has "Message 2" on the left and "Value 2" on the right, each followed by an empty text input box. At the bottom center of the window is a button labeled "Add".

Figure 4.26 SMS Template – configuration interface – String reporting format

When the configuration of one command is done, click on the **Add** button to add the related SMS command in the list.

### 4.8.8 SMS Settings

The SMS message format is defined as follows:

*Alias command, Modbus virtual ID, value (for write command)*

Example 1:

You'd like to see the current value of the IED with Modbus ID "10" by sending "amp, 10" by SMS to MB5901B. You'd like to receive value from SMS in the format "Amp value: XXX (*signed integer*) A"

The settings should be completed as below:

SMS To Modbus Template Settings			
Alias Command	<input type="text" value="amp"/>	Type	<input type="text" value="Holding Registers"/>
Starting Address	<input type="text" value="100"/>	Quantity	<input type="text" value="1"/>
Req/Rep Format	<input type="text" value="Dec"/>	Prefix Msg	<input type="text" value="Amp value:"/>
Postfix Msg	<input type="text" value="A"/>		

Figure 4.27 SMS Settings – Example 1

Please note that starting address "100" is an example. The address depends on the actual IED data mapping that is being used and may be slave-specific

Example 2:

You'd like to see the current value of the IED Customer request value of voltage of IED with Modbus ID "30" by sending "status, 30" and would like to receive value from SMS in a format of "Status: Alarm" or "Status: Ready".

The settings should be completed as below:

SMS To Modbus Template Settings			
Alias Command	<input type="text" value="statu"/>	Type	<input type="text" value="Coils"/>
Starting Address	<input type="text" value="400"/>	Quantity	<input type="text" value="1"/>
Req/Rep Format	<input type="text" value="String"/>	Prefix Msg	<input type="text" value="Status"/>
Message/Value Pair			
Message 1	<input type="text" value="Alarm"/>	Value 1	<input type="text" value="1"/>
Message 2	<input type="text" value="Ready"/>	Value 2	<input type="text" value="0"/>

Figure 4.28 SMS Settings – Example 2

Please note that starting address "400" is an example. The address depends on the actual IED data mapping that is being used and may be slave-specific

Example 3:

You'd like to send value to the IED with Modbus ID "40" to start/stop a fan by sending "fan, start" or "fan, stop" and would like to receive value from SMS in a format of "Success" or "Error message"

The settings should be completed as below:

SMS To Modbus Template Settings			
Alias Command	<input type="text" value="fan"/>	Type	<input type="text" value="Coils"/>
Starting Address	<input type="text" value="500"/>	Quantity	<input type="text" value="1"/>
Req/Rep Format	<input type="text" value="String"/>	Prefix Msg	<input type="text"/>
Message/Value Pair			
Message 1	<input type="text" value="start"/>	Value 1	<input type="text" value="1"/>
Message 2	<input type="text" value="stop"/>	Value 2	<input type="text" value="0"/>

Figure 4.29 SMS Settings – Example 3

Please note that starting address "500" is an example. The address depends on the actual IED data mapping that is being used and may be slave-specific



---

## 4.9 Advanced Settings

---

### 4.9.1 SNMP Settings

SNMP (Simple Network Management Protocol) Settings determine whether the device settings can be viewed with a standard SNMP software. By default, it is disabled. Figure 4.31 shows the **SNMP Settings** page with SNMP disabled. The first group of options on this web page is called **Basic Data Objects**:

- **System Contact** is the device administrator's contact information. The default value is "contact".
- **System Name**, which is by default, is the MAC address of the Modbus Gateway. The default value is "atop".
- **System Location** is the device's physical location. The default value is "location".

#### Advanced Settings > SNMP Settings

---

The SNMP is used in network management systems to monitor network-attached devices for conditions that warrant administrative attention.

Basic Data Objects	
System Contact	<input type="text" value="contact"/>
System Name	<input type="text" value="atop"/>
System Location	<input type="text" value="location"/>
SNMP	
SNMP	<input type="checkbox"/> Enable
SNMP Trap Server	
SNMP Trap Server	<input type="text" value="10.0.159.109"/>

Figure 4.30 SNMP Settings Web Page with SNMP disabled

The second group of options is called **SNMP**:

- **SNMP** is followed by a “**Enable**” check box in which to enable the SNMP feature on the Modbus Gateway. If this box is not checked, it means that SNMP is disabled. Then, the rest of the options will be disappeared as shown in Figure 4.30. If the SNMP option is enabled, there can be three different views for SNMP options as shown in Figure 4.31, Figure 4.32, and Figure 4.33.
- **SNMP Version** is a drop-down box which allows the user to choose version of supported SNMP protocol. This can be **v1/v2c** or **v1/v2c/v3** or **Only v3**. Note that if this option is set as v1/v2c/v3, the SNMP options will be shown as in Figure 4.31.
  - SNMP v1 and v2c support simple community string based authentication protocol for their security mechanism. If this option is selected as v1/v2c, the SNMP options will be shown as in Figure 4.32.
  - SNMP v3 is improved with additional authentication and cryptography security. If this option is selected as Only v3, the SNMP options will be shown as in Figure 4.33.
- **Read Community** is the field that you can specify the **SNMP Read Community String** which is a user ID or plaintext password string for simple authentication in SNMP v1 and v2c. In order to make the SNMP information available for public viewing, simply flag the “**Enable SNMP**” checkbox and fill in your desired password string (the default string is “**public**”) in the **Read Community** field.
- **Write Community** is the field that you can specify the **SNMP Write Community String** which is a user ID or plaintext password string for simple authentication in SNMP v1 and v2c. In order to allow a group of people to change the SNMP information, enter your desired password string (the default string is “**private**”) in the **Write Community** field.
- **User Name** is the user name for SNMP account for SNMP v3.
- **Password** is the password for SNMP account for SNMP v3.
- **Encrypt** is a drop-down box which allows the user to choose the encryption scheme for SNMP v3. The available options are None, DES, or AES. The default is “None”.
- **Encrypt Key** is where you can specify the encryption key for the SNMP v3 access.

The last group of option is **SNMP Trap Server**. In order to allow a trap server to collect device information, fill in **SNMP Trap Server** with its corresponding IP address (a trap server is designed to collect all alarm information from the Modbus Gateway). An example in Figure 4.31 is 10.0.159.109.

After **SNMP Settings** configuration is finished, click the **Save Configuration** button to save all changes that have been made or click **Cancel** button to discard your changes.

Advanced Settings > SNMP Settings

The SNMP is used in network management systems to monitor network-attached devices for conditions that warrant administrative attention.

Basic Data Objects	
System Contact	<input type="text" value="contact"/>
System Name	<input type="text" value="atop"/>
System Location	<input type="text" value="location"/>
SNMP	
SNMP	<input checked="" type="checkbox"/> Enable
SNMP Version	<input type="text" value="v1 / v2c / v3"/>
Read Community	<input type="text" value="public"/>
Write Community	<input type="text" value="private"/>
User Name	<input type="text" value="atopatop"/>
Password	<input type="text" value="12345678"/>
Encrypt	<input type="text" value="DES"/>
Encrypt Key	<input type="text" value="87654321"/>
SNMP Trap Server	
SNMP Trap Server	<input type="text" value="10.0.159.109"/>

Figure 4.31 SNMP Settings Web Page with SNMP Enabled and Version v1/v2c/v3

Advanced Settings > SNMP Settings

The SNMP is used in network management systems to monitor network-attached devices for conditions that warrant administrative attention.

Basic Data Objects	
System Contact	<input type="text" value="contact"/>
System Name	<input type="text" value="atop"/>
System Location	<input type="text" value="location"/>
SNMP	
SNMP	<input checked="" type="checkbox"/> Enable
SNMP Version	<input type="text" value="v1 / v2c"/>
Read Community	<input type="text" value="public"/>
Write Community	<input type="text" value="private"/>
SNMP Trap Server	
SNMP Trap Server	<input type="text" value="10.0.159.109"/>

Figure 4.32 SNMP Settings Web Page with SNMP Enabled and Version v1/v2c

Advanced Settings > SNMP Settings

The SNMP is used in network management systems to monitor network-attached devices for conditions that warrant administrative attention.

Basic Data Objects	
System Contact	<input type="text" value="contact"/>
System Name	<input type="text" value="atop"/>
System Location	<input type="text" value="location"/>
SNMP	
SNMP	<input checked="" type="checkbox"/> Enable
SNMP Version	<input type="text" value="Only v3"/>
User Name	<input type="text" value="atopatop"/>
Password	<input type="text" value="12345678"/>
Encrypt	<input type="text" value="DES"/>
Encrypt Key	<input type="text" value="87654321"/>
SNMP Trap Server	
SNMP Trap Server	<input type="text" value="10.0.159.109"/>

Figure 4.33 SNMP Settings Web Page with SNMP Enabled and Version Only v3

4.9.2 Modbus

In **Modbus** settings, it is possible select whether to enable **Modbus Exception** by flagging the **Enable** checkbox as shown in

Figure 4.34. If the Modbus slave returns no response and timeout occurs, it may then be necessary for the gateway to return an exception. To set **Response Timeout** for COM and TCP/VCOM, fill in the timeout periods in the fields as shown in

Figure 4.34. Note that the timeout setting can be applied to all COM ports by checking the **Apply to All Coms** box.

- Configure timeout for each COM port between 10ms to 120000ms with a default value of 1000ms.
- Configure timeout for TCP/VCOM port between 10ms to 120000ms with a default value of 1000ms.

After finishing the Advanced Modbus Settings configuration, click on the **Save Configuration** button to save all changes that have been made. A **Save Successfully** message will show up, and the web browser will be redirected back to the **Modbus** page.

Advanced Settings > Modbus

Modbus Settings	
Modbus Exception	<input type="checkbox"/> Enable
Response Timeout	
COM <input type="text" value="1"/>	<input type="text" value="1000"/> (10-120000ms Default:1000ms)
<input type="checkbox"/> Apply to All Coms	
TCP/VCOM	<input type="text" value="1000"/> (10-120000ms Default:1000ms)
<input type="button" value="Save Configuration"/>	

Figure 4.34 Advanced Modbus Settings of Response Timeout for Modbus Exception

## 4.10 Alert

### 4.10.1 Settings

When enabled, an E-mail alert will be sent to the designated E-mail addresses in the **SMTP** (Simple Mail Transfer Protocol) **Settings**. To setup an email alert function, the user needs to configure the **sender's E-mail address**, the **receiver's E-mail addresses** (up to three receivers), and the mail server configuration as shown in Figure 4.35. Under **Mail Server** settings, fill in the IP address or host name of a **Mail Server**. Make sure that the Modbus Gateway device is able to resolve the host name properly. This requires the DNS server to be configured first as explained in Section 4. If a mail server authentication is required, check on the **Mail Server Authentication Required** box and fill in the **User Name** and the **Password** fields.

After configuration of the SMTP Settings is complete, click **Save Configuration** to save all changes that have been made. A **Save Successfully** message will show up, and the web browser will be redirected back to the **SMTP Settings** page. The user can also send a test E-mail from the Modbus Gateway by clicking on the **Send Test Mail** button. A pop-up window will notify the user of the result of test mail. If there is a problem, please re-check the information of **Mail Server**, **User Name** and **Password** or check the network connection to the **Mail Server**.

### Alert > SMTP Settings

To configure the SMTP server where the E-mail notification will be sent.

E-mail Setting	
Sender's E-mail Address	<input type="text"/>
Receiver's E-mail Address 1	<input type="text"/>
Receiver's E-mail Address 2	<input type="text"/>
Receiver's E-mail Address 3	<input type="text"/>

Mail Server	
Mail Server	<input type="text"/>
<input type="checkbox"/> Mail Server Authentication Required. <input checked="" type="checkbox"/> Enable TLS/SSL.	
User Name	<input type="text" value="atop@atop.com.tw"/>
Password	<input type="text"/>

Figure 4.35 SMTP Settings Web Page

### 4.10.2 Alert Events

In **Alert Events** settings, the user can configure options to have the Modbus Gateway sending out device information to alert users, administrators, or responsible personnel as shown in Figure 4.36. They can be sent out automatically. There are seven anomalies defined on this page that can trigger alert functions (by checking the corresponding **E-mail** boxes), which are:

- **Cold Start** is an event when power supply is interrupted,
- **Warm Start** is an event when the device Restart function is used either by pressing a button or by its interface,
- **Authentication Fail** is an event when incorrect username and password are entered,
- **IP address change** is an event when the device’s IP address is changed,
- **Password Changed** is an event when the authentication password is changed,
- **Watchdog Reset** is an event when the system reboots because of a hardware failure or a software crash,
- **Power Failure** : devices equipped with redundant (dual) power input are set as they expect to have power available from both sources at the same time. In the event one of the two power inputs is missing, the Relay output is triggered.

### Alert > Alert Events

To configure the Modbus Gateway to send alert by E-mail or trap.

Alert Event		
Cold Start	<input type="checkbox"/> E-mail	<input type="checkbox"/> Trap
Warm Start	<input type="checkbox"/> E-mail	<input type="checkbox"/> Trap
Authentication Failure	<input type="checkbox"/> E-mail	<input type="checkbox"/> Trap
IP Address Changed	<input type="checkbox"/> E-mail	
Password Changed	<input type="checkbox"/> E-mail	
Watchdog Reset	<input type="checkbox"/> E-mail	<input type="checkbox"/> Relay Out
Power Failure	<input type="checkbox"/> E-mail	<input type="checkbox"/> Relay Out

Save Configuration

Figure 4.36 Alert Events Web Page

The user can also set an SNMP trap by checking the **Trap** checkbox for each of the first three anomalies above. This will send out alerts to an SNMP Trap Server. Note that to configure **SNMP Trap Server** please see Section 4.9.

The user can enable **Watchdog Reset** and **Power Failure** events to trigger the Relay Output alarm digital output. In order to do so, check the corresponding checkbox in front of the **“Relay Out”**.

After the **Alert Events** setting is complete, click on **Save Configuration** button to save all changes that have been made. A **Save Successfully** message will show up, and the web browser will be redirected back to the **Alert Events** page.

## 4.11 VPN

A virtual private network(VPN) extends a private network across a public network, such as the Internet. It enables a computer to send and receive data across shared or public networks as if it were directly connected to the private networks, while benefitting from the functionality, security and management policies of the private network. This is done by establishing a virtual point-to-point connection through the use of dedicated connections, encryption, or a combination of the two.

See below VPN scenario of SE/PG/MB59XX for your reference.

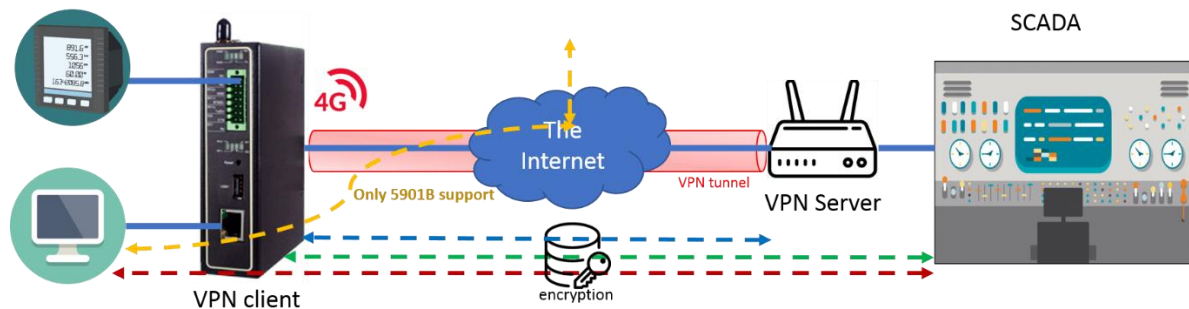


Figure 4.37 VPN Scenario of SE/PG/MB59XX

MB59XX supports several VPN protocols: PPTP (Point-to-Point-Tunneling-Protocol), IPsec (Internet Protocol Security), and OpenVPN. In order to configure VPN, please click on the related item in the dedicated VPN sub-menu on the left-hand side of the screen, as shown in Figure 4.38 below.

A better description of PPTP is available in Chapter 4.12 below

A better description of OpenVPN is available in Chapter 4.13 below.

A better description of IPsec related settings is available in Chapter 4.14 below.

- VPN
  - PPTP
  - PPTP Status
  - IPsec Settings
  - IPsec Status
  - OpenVPN Settings
  - OpenVPN Keys
  - OpenVPN Status

Figure 4.38 VPN menu structure

## 4.12 PPTP Settings

PPTP (Point-to-Point Tunneling Protocol) is a method for implementing virtual private networks. PPTP uses a TCP control channel and a GRE tunnel to encapsulate PPP packets. Select the PPTP item in the menu to configure a PPTP tunnel. Figure 4.39 shows the PPTP configuration page under PPTP web setting. Currently MB59xx series only supports PPTP client. After settings are completed, click “Save” to save the configuration.

### PPTP > Settings

Client Settings	
Enable PPTP Client	<input checked="" type="checkbox"/>
Always On	<input type="checkbox"/>
PPP Authentication	Only PAP ▾
PPP Encryption	Disable ▾
Remote IP Address	192.168.4.244
User Name	papuser
Password	*****

Figure 4.39 PPTP configuration page.

- Enable PPTP client: Check this to enable the PPTP client on MB59XX series.
- Always on: Check this to have MB59xx to automatically reconnect in event of disconnection.
- PPP Authentication: Specify here the authentication algorithm – should be same as server
- PPP Encryption: Specify here the encryption – should be same as server
- Remote IP address: Specify here the IP address of PPTP server.
- User Name: Specify here the User name for authentication.
- Password: Specify here Password for authentication.

Figure 4.40 below shows the PPTP Link status.

### PPTP > Link Status

	Current Status
Local Virtual IP Address	0.0.0.0
Remote Virtual IP Address	0.0.0.0
Status	Disconnect

Figure 4.40 PPTP Link Status

- Local Virtual IP Address: The virtual IP address assigned by PPTP server.
- Remote Virtual IP Address: The virtual IP address of PPTP server.
- Status: It shows the PPTP tunnel connection status. It will show Disconnect, Connect and Connecting.
- Disconnect: No tunnel is established.



- Connect: PPTP Tunnel is established.
- Connecting: PPTP Tunnel is establishing.
- Connect: Click this button to connect to PPTP server.
- Disconnect: Click this button to disconnect PPTP tunnel.
- Refresh: Click this button to refresh the PPTP tunnel status.

### 4.13 OpenVPN Settings

OpenVPN is an application that implements VPN for creating secure point-to-point or site-to-site connections in routed or burdged configurations and remote access facilities. It uses a custom security protocol that utilizes SSL/TLS for key exchange.

OpenVPN allows peers to authenticate each other using a Static Key (pre-shared key) or certificates. When used in a multi-client-server configuration, it allows the server to release an authentication certificate for every client, using signature and certificate authority.

There are two OpenVPN connection scenarios. They are the TAP and TUN scenario. The product can create ether a layer-3 based IP tunnel(TUN), or a layer-2 based Ethernet TAP that can carry any type of Ethernet traffic. In addition to configuring the device as a Server or Client, you have to specify which type of OpenPVN connection scenario is to be adopted. Currently MB59xx series only support TUN mode.

#### 4.13.1 OpenVPN Setting

In order to configure OpenVPN, click on the VPN tab in the left hand side of the menu and then **OpenVPN Settings**. The user interface is shown in below Figure 4.41.

#### OpenVPN > Settings

General Settings	
OpenVPN	<input checked="" type="checkbox"/> Enable
Mode	Server ▼
Protocol	TCP ▼
Port	1194
Device Type	TUN
Local / Remote Endpoint IP	10.8.0.1 / 10.8.0.2
Authorization Mode	Static key ▼
Encryption Cipher	Blowfish ▼
Hash Algorithm	SHA1 ▼
Compression	Disable ▼
Push LAN To Clients	<input type="checkbox"/> Enable

Save Cancel

Figure 4.41 OpenVPN Setting

The OpenVPN parameters are described as below:

- **OpenVPN:** Check this to enable OpenVPN.
- **Mode:** Specifies what the scenario of this device, server or client. When choosing server mode, the device will play as server role and will standby for client connection.

- **Protocol:** Selects the transport layer protocol to be used for VPN (TCP or UDP).
- **Port:** Defines the port number for TCP/UDP connection.
- **Device Type:** OpenVPN tunnel connection by TUN (Tunnel) mode or TAP mode. Currently MB59xx series only supports TUN (Tunnel) mode.
- **Virtual IP** (only when “OpenVPN Server” mode is selected): Specify the server’s virtual IP. Virtual IP will only be available when SSL/TLS is chosen as the Authentication Mode. The Server’s virtual IP address will be 10.8.0.1/24 and client virtual IP address will be 10.8.0.x/24.
- **Local/Remote endpoint IP** (only when “OpenVPN Client” mode is selected): Specifies the local and remote endpoint virtual IP address of this OpenVPN gateway. Local/Remote endpoint IP only be available when static key is chosen in Authentication Mode.
- **Authentication Mode:** Specify the authorization mode the OpenVPN server. There are 2 options available:
  - SSL/TLS: OpenVPN will use TLS authorization mode, and the following items CA cert, Server Cert and DH PEM will be used. See section 4.13.2 below for mode details.
  - Static Key: OpenVPN will use static key authorization, and the static key will be used. See section 4.13.2 below for mode details.
- **Encryption Cipher:** Specify the Encryption cipher. There are 5 options available: blowfish, AES 256, AES 192, AES 128 and Disable. When Disable is selected, no encryption will be used.
- **Hash Algorithm:** Specify the Hash algorithm. There are 5 options available: SHA1, MD5, SHA 256, SHA 512 and Disable. When Disable is selected, no Hash algorithm will be used.
- **Compression:** Specify whether or not the tunnel packets will be compressed. There are three options available: LZ4, LZO and Disable. When Disable is chosen, the packet won’t be compressed.
- **Push Lan to clients** (only when “OpenVPN Server” mode is selected): When enabled, MB59xx will push the LAN port subnet to the OpenVPN remote clients, so that the remote client will add a route to the MB59XX local network. Only MB5901B supports this function.

### 4.13.2 OpenVPN Keys

OpenVPN requires encryption keys (unless Encryption Cipher is disabled). In order to key-in, import or generate encryption keys, please select “OpenVPN Keys” from the VPN menu on the left-hand side of the user interface.

#### OpenVPN > Keys

Current Key Information	
Certificate Authority	<pre>-----BEGIN CERTIFICATE----- MIIEnjCCA4agAwIBAgIJAIq9J0+6i1d+MA0G CSqGSIb3DQEBCwUAMIGQMwswCQYD VQQGEwJUVzEPMA0GA1UECBMGVGFpd 2FuMRAwDgYDVQQHEwdlc2luY2h1MQ0w</pre>
Client Certificate	<pre>Check that the request matches the signature Signature ok The Subject's Distinguished Name is as follows</pre>
Client Key	<pre>-----BEGIN PRIVATE KEY----- MIIEvwIBADANBgkqhkiG9w0BAQEFAASCB KKwggSIAgEAAoIBAQDFo0Yz+dLegsAJ qUPLOY/t2Aa8oS7Y3XW2wJTFI9snXvqYly hiwIzYklG1VNjCNPBiqCx+0QTDg2fY</pre>

Figure 4.42 OpenVPN Keys

- **Certificate Authority:** A certificate authority(CA) is an entity that issues digital certificates. A digital certificate certifies the ownership of a public key by the named subject of the certificate. A CA acts as a trusted third party, trusted both by the owner and by the party relying upon the certificate.
- **Server/Client Certificate:** It shows the information of server certificate. You can check the information if you use upload server certificate file.

- **Server/Client Key:** It shows the information of server key. You can check the information if you use upload server key file.
- **Diffie Hellman parameters (Server only):** It shows the information of Diffie Hellman parameters.

When MB59XX acts as OpenVPN server, the user could define his own certification information by clicking on the **Secret generate** button. Otherwise, the certificate can be imported. When generating a new key, a Pop-up window will open. Fill in the parameters and click on **“Generation Keys & Apply”** button.

### OpenVPN > Keys Generation

Certificate Information	
Country Code	<input type="text" value="TW"/>
State	<input type="text" value="Taiwan"/>
City	<input type="text" value="Hsinchu"/>
Organization	<input type="text" value="Atop"/>
Organizational Unit	<input type="text" value="Atop"/>
Email Address	<input type="text" value="sales@atop.com.tw"/>
Common Name (Read Only)	<input type="text" value="AtopSE"/>
Expire Time (Read Only)	<input type="text" value="10"/> (years)

Figure 4.43 Certification information

- **Country Code:** Enter the country ISO code.
- **State:** Enter the state (if applicable)
- **City:** Enter the city
- **Organization:** Enter the name of organization.
- **Organization Unit:** Enter the unit or section in the organization.
- **Email Address:** Enter an email address.
- **Common Name:** The server name. (Read only)
- **Expire time:** The number of years the certificate is valid for. (Read only)

When clicking on the **Keys Upload** button instead, a pop-up window shown in Figure 4.44 will show up and will allow you to import the related server or client certificates.

### OpenVPN > Keys Upload

Certificate Upload	
Root CA	<input type="text"/> <input type="button" value="Browse..."/> <input type="button" value="Upload"/>
Server CA	<input type="text"/> <input type="button" value="Browse..."/> <input type="button" value="Upload"/>
Server Key	<input type="text"/> <input type="button" value="Browse..."/> <input type="button" value="Upload"/>
Server DH	<input type="text"/> <input type="button" value="Browse..."/> <input type="button" value="Upload"/>

Figure 4.44 Certificate Upload

Click the **Browse** button to select your own server or client certificate and click on the **Upload** button. When MB59xx acts as an OpenVPN server, use **Export All Keys** button to download all the necessary certificates include CA.crt, CA.key and the certificate and key for client side.

### 4.13.3 OpenVPN Status

In order to check the current OpenVPN connection status, click "OpenVPN status" in the VPN menu on the left-hand side of the screen. A page like below Figure 4.45 will show up when OpenVPN is in Server mode. It will look similar when set in Client mode.

#### OpenVPN > Status

Current Status	
Mode	Server
Local Virtual IP Address	0.0.0.0
Remote Virtual IP Address	0.0.0.0
Status	Connecting

Figure 4.45 OpenVPN server status

#### Client Mode Description:

- **Mode:** Displays the OpenVPN mode MB59xx is currently running as.
- **Local Virtual IP address:** Displays the Local virtual IP address.
- **Remote Virtual Status:** Displays the Remote virtual IP address.
- **Status:** Displays the current status of OpvnVPN connection. It will include Disconnected, Connecting and Connected.

#### Server Mode Description:

- **Mode:** Displays the OpenVPN mode MB59xx is currently running as.
- **Local Virtual IP address:** Displays the Local virtual IP address.
- **Status:** Displays the current status of OpvnVPN connection. It will be either be Deactivated, Activating, Disconnected, Connecting and Connected.

### 4.14 IPsec Settings

IPsec (or Internet Protocol Security) which is a network protocol suit that can establish secure and reliable communications for different application scenarios. IPsec enables data confidentiality, data integrity, data origin authentication, and antireplay. For example, a corporate headquarter and its branch offices in the fields do not need to apply for dedicated communication lines for sharing their network resources securely. To securely communicate and shared company’s resources over the Internet, IPsec connections can be employed to secure all applications at the IP layer. In another case, when employees are on a business trip, they can establish IPsec connections with their company over their mobile devices or the public network to access the internal network resources in their company.

MB59XX has an IPsec connection function to establish a secure communication link between **host-to-host**, **host-to-subnet** (or host-to-network), and **subnet-to-subnet** (or network-to-network). Note that at the other endpoint of the Internet, a router or gateway with full IPsec capability is required to successfully establish the secure communication. There are two types of IPsec connection modes or types supported by MB59XX which are **Tunnel mode** and **Transport mode**.

- In **Tunnel mode**, the entire IP packet is encrypted and authenticated. The IP packet is then encapsulated into a new IP packet with a new IP header. The **Tunnel mode** which is used to create Virtual Private Network (VPN) can be applied to the **host-to-host**, the **host-to-subnet**, and the **subnet-to-subnet** communications. The packet (datagram) format for **Tunnel mode** is as follow:

New IP Header	IPsec Header	Original IP Packet	Optional IPsec Trailer
---------------	--------------	--------------------	------------------------

- In **Transport mode**, only the payload of the IP packet is usually encrypted or authenticated. The routing is intact because the IP header is not modified and not encrypted. However, when the authentication header is used, the IP addresses cannot be modified by Network Address Translation (NAT). The **Transport mode** can only be applied in the **host-to-host** communication. The packet (datagram) format for **Transport mode** is as follow:

Original IP Header	IPsec Header	Original IP Packet	Optional IPsec Trailer
--------------------	--------------	--------------------	------------------------

A **host-to-host** connection is typically used in a simple point-to-point communication. It is useful for a direct communication with a server or between the device (MB59XX) and a peer device (such as another MB59XX). Note that this type of connection cannot be use for accessing entire sub-network resources. Figure 4.46 illustrates an example of host-to-host connection. This configuration can be set in both **Tunnel mode** and **Transport mode**.

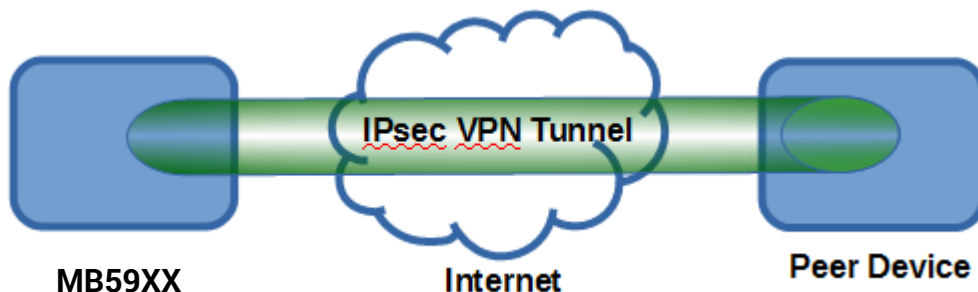


Figure 4.46 An example of Host-to-Host Connection on MB59XX.

A **host-to-subnet** (or host-to-network) connection is mainly applied when one endpoint needs to access the other side’s sub-networks. Typical applications are employees who are travelling on business and would like to connect back to their corporate headquarters via mobile devices. They can establish IPsec connections to access the internal corporate network resources. Figure 4.47 illustrates a road-warrior application in which MB59XX can

access a remote sub-network resource via a peer gateway. Figure 4.48 illustrates a gateway application in which MB59XX can passively accept connection requests from remote sides and provide access to the MB59XX sub-network resources. Note that both of these configurations must set the connection type to **Tunnel mode** only.

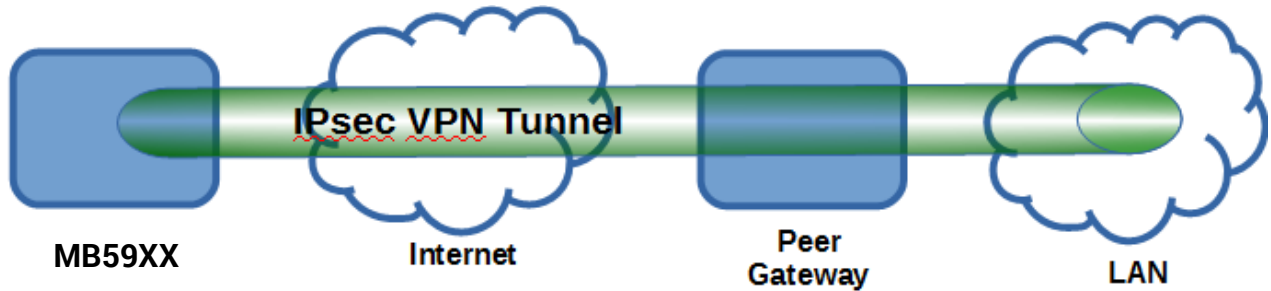


Figure 4.47 Roadwarrior Application using Host-to-Subnet Connection

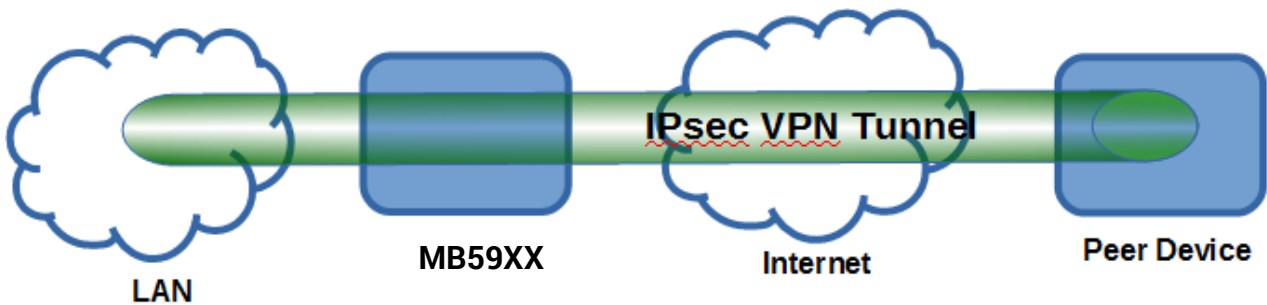


Figure 4.48 Gateway Application using Host-to-Subnet Connection

A **subnet-to-subnet** connection is mainly used to connect two subnets from different sides together. Typically, applications are corporate headquarters and branch offices that share internal network resources. A specific application can also be set up as one side’s subnet to establish IPsec VPN tunnels for accessing a device in the other side’s subnet or as a device in one’s side subnet to establish IPsec VPN tunnels for accessing another device in the other side’s subnet.

Figure 4.49 illustrates an example of the subnet-to-subnet connection with a network application. A host inside the remote subnet can also connect to a local subnet (host-network application) based on this subnet-to-subnet connection as shown in Figure 4.50. On the other hand, two different devices on two different subnets (host-host application) can be connected via a IPsec VPN tunnel based on this subnet-to-subnet connection as shown in Figure 4.51. Note that all subnet-to-subnet configurations must set the connection type to **Tunnel mode** only.

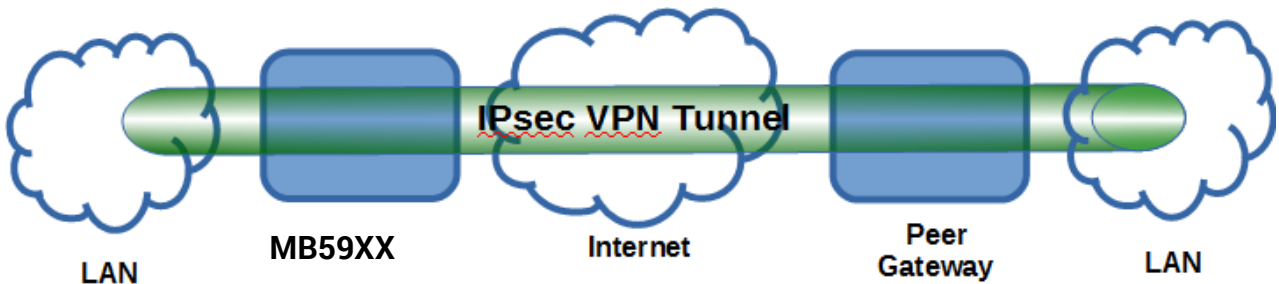


Figure 4.49 Example of network application using subnet-to-subnet connection via MB59XX and a peer device

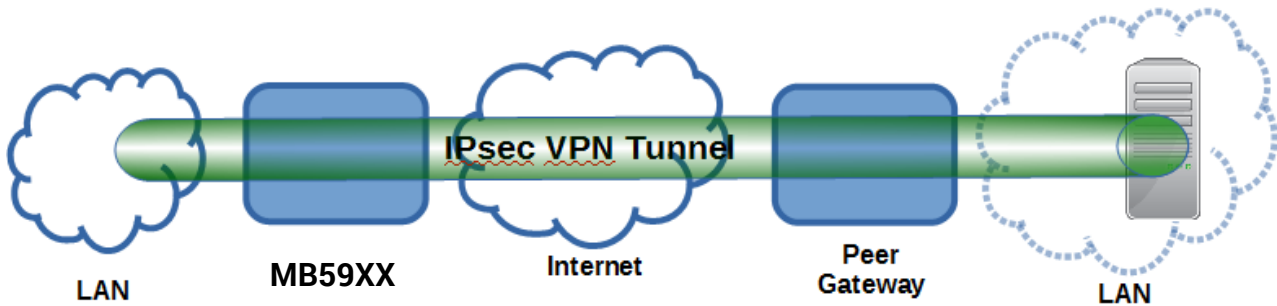


Figure 4.50 An example of host-network application via the subnet-to-subnet connection

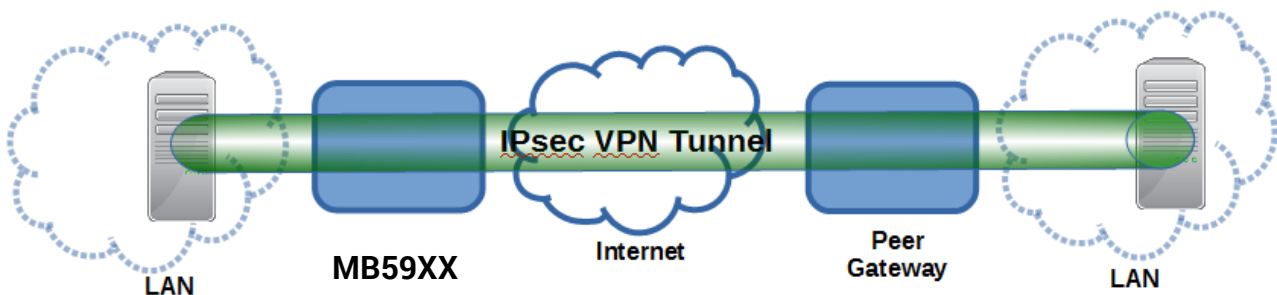


Figure 4.51 An example of host-host application via the subnet-to-subnet connection

In some network configuration, there is an implementation of network address translation (NAT) on its gateway/routers. NAT is typically used to allow private IP addresses on private networks behind gateways/routers with a single public IP address connecting to the public Internet. The internal network devices can communication with hosts on the external network by changing the source address of outgoing requests to that of the NAT device (gateway/router) and relaying replies back to the originating device. IPsec virtual private network (VPN) clients use network address translation (NAT) traversal in order to have Encapsulating Security Payload (ESP) packets traverse NAT. IPsec uses several protocols in its operation, which must be enabled to traverse firewalls and network address translators (NATs), such as

- Internet Key Exchange (IKE) protocol uses User Datagram Protocol (UDP) port number 500.
- Encapsulating Security Payload (ESP) uses IP protocol number 50.
- Authentication Header (AH) uses IP protocol number 51.
- IPsec NAT traversal uses UDP port number 4500 when NAT traversal is in use.

MB59XX also has a feature called NAT traversal (NAT-T) that allows the IPsec tunnel to pass through the NAT in its network. MB59XX will activate this option automatically and encapsulate the IPsec packets inside UDP port 4500 to be able to pass through a NAT router.

To provide security service for all types of tunnel connections and applications described above, MB59XX utilizes the Internet Key Exchange (IKE) protocol to set up a security association (SA) in the IPsec protocol suite. Note that IKE builds upon the Oakley protocol and ISAKMP (Internet Security Association and Key Management Protocol). IKE uses X.509 certificates for authentication either pre-shared or distributed using DNS (preferably with DNSSEC). IKE also uses a Diffie-Hellman key (DH) key exchange to set up a shared session secret from which cryptographic keys are derived. The IPsec security associations (SA) is divided into two phases. In phase one, IKE creates an authenticated secure channel between MB59XX and its peer device, which is called the IKE Security Association. The Diffie-Hellman (DH) key agreement is always performed in this phase to create a shared secret key or DH key. In phase two, IKE negotiates the IPsec security associations and generates the required key material for IPsec. This IPsec key which is a symmetrical key will be used for bulk data transfer inside the IPsec tunnel. A new Diffie-Hellman agreement can be done in phase two, or the keys can be derived from the phase one shared secret.

4.14.1 IPsec Settings

Figure 4.52 shows the IPsec Settings web page under the IPsec Settings menu. There are four sections on this page: General Settings, Authentication Settings, IKE Settings, and Dead Peer Detection Settings.

**IPsec > Settings**

---

General Settings	
IPsec	<input type="checkbox"/> Enable
Peer Address	<input checked="" type="radio"/> Dynamic <input type="radio"/> Static: <input type="text" value="10.0.50.100"/>
Remote Subnet	<input checked="" type="radio"/> None (Host Only) <input type="radio"/> Network: <input type="text" value="192.168.1.0"/> / <input type="text" value="24"/>
Local Subnet	<input checked="" type="radio"/> None (Host Only) <input type="radio"/> Network: <input type="text" value="10.0.50.0"/> / <input type="text" value="24"/>
Connection Type	<input type="text" value="Tunnel"/> ▼
Authentication Settings	
Method	<input checked="" type="radio"/> Pre-Shared Key: <input type="text" value="secrets"/>
IKE Settings	
Phase 1 SA (ISAKMP)	Mode <input type="text" value="Main"/> ▼
	DH Group <input type="text" value="Group 2 (1024-bit)"/> ▼
	Encryption Algorithm <input type="text" value="AES-128"/> ▼
	Authentication Algorithm <input type="text" value="SHA1"/> ▼
	SA Life Time <input type="text" value="3600"/> seconds
Phase 2 SA	Protocol <input type="text" value="ESP"/> ▼
	Perfect Forward Secrecy <input type="text" value="Group 2 (1024-bit)"/> ▼
	Encryption Algorithm <input type="text" value="AES-128"/> ▼
	Authentication Algorithm <input type="text" value="SHA1"/> ▼
	SA Life Time <input type="text" value="28800"/> seconds
Dead Peer Detection Settings	
DPD Action <input type="text" value="Hold"/> ▼	
DPD Interval <input type="text" value="30"/> seconds	
DPD Timeout <input type="text" value="120"/> seconds	

**Note: When Save Settings the device will not auto-connect.**

Figure 4.52 IPsec Tunnels Web Page under IPsec Setting Menu



To configure **IPsec Settings**, first you need to configure the **General Settings** section under the **IPsec Settings** menu. Under the **General Settings**, there are five parameters that need to be set as follows:

- **IPsec:** By checking the box for this option, you enable the IPsec feature for MB59XX.
- **Peer Address:** This option is to specify the IP address of a remote host or peer host or remote gateway. There are two choices for the **Peer Address** which are **Dynamic** and **Static**.
  - **Dynamic:** When you selected the **Dynamic** by choosing the **Dynamic** radio button, the **Peer Address** or the remote device IP address is not fixed or unknown. Note that when **Peer Address** is set to dynamic mode, the MB59XX can accept remote connection request or will be the responder.
  - **Static:** On the other hand, if you know the IP address of the remote device, you can choose the radio button for **Static** option and enter the IP address in the text box behind it. The MB59XX will be the initiator/responder.
- **Remote Subnet:** This option is to indicate whether you want to create an IPsec connection to the remote subnetwork. There are also two choices for **Remote Subnet** access:
  - **None )Host Only(:** This option is to specify that the remote subnet is not supported or no remote subnet and only host access is supported. That is the remote end of the IPsec tunnel is a host or peer device only.
  - **Network:** This option is to specify the **Remote Subnet** by entering the **Subnet IP Address** and the number of **Subnet Masking Bits** or associated routing prefix. This option supports the Classless Inter-Domain Routing (CIDR) notation. For example, Subnet IP Address is 192.168.11.0 and Subnet mask are 24 bits (from 255.255.255.0).
- **Local Subnet:** This option is to enable an IPsec connection to the local subnetwork. There are two choices for **Local Subnet** access:
  - **None (Host Only):** This option is to specify that the local subnet is not supported or no local subnet and only local host access is supported. That is the local end of the IPsec tunnel is a host or peer device only.
  - **Network:** This option is to specify the **Local Subnet** by entering the **Subnet IP Address** and the number of **Subnet Masking Bits** or associated routing prefix. This option supports the Classless Inter-Domain Routing (CIDR) notation. For example, Subnet IP Address is 192.168.11.0 and Subnet mask are 24 bits (from 255.255.255.0).
- **Connection Type:** This option is to specify the IPsec connection type which can be either **Tunnel** mode or **Transport** mode. Please select the corresponding connection type from the drop-down list. Note that the **Tunnel mode** can be applied to the **host-to-host**, the **host-to-subnet**, and the **subnet-to-subnet** communications. The **Transport mode** can only be applied in the **host-to-host** communication.

The second part of **IPsec Settings** is the **Authentication Settings**. Here you have an authentication's **Method** which already selected as the **Pre-Shared Key**. Then, you must enter in a secret key or a pass-phrase in the textbox behind it. Both ends of the the VPN tunnel must use the same secret key or password. The pre-shared key can be 1 to 60 case-sensitive ASCII characters and special symbols.

The third part of **IPsec Settings** is the **IKE (Internet Key Exchange) Settings**. Internet Key Exchange (IKE) that MB59XX supports is the IKE version 1 or **IKEv1**. Within the **Phase 1 SA (ISAKMP)**, there are five security options to be configured. In phase 1, the two VPN gateway exchange information about the encryption algorithms that they support and then establish a temporary secure connection to exchange authentication information.

- First option is the **Mode** of IKE session which defines how many steps or packets will be used or exchanged during the IKE SA negotiation. You can choose either **Main Mode** or **Aggressive Mode**. The **Main Mode** will send SA proposals, Diffie-Hellman public key, and ISAKMP session authentication in three exchange

packets, while the **Aggressive Mode** will put all SA proposals, DH public key, and ISAKMP session authentication in to one exchange packet. **Aggressive Mode** makes the IKE negotiation quicker than **Main Mode**. The difference between **Main Mode** and **Aggressive Mode** is that the “identity protection” is used in the **Main Mode**. The identity is transferred encrypted in the **Main Mode** but it is not encrypted in **Aggressive Mode**. Typically, the **Main Mode** is recommended.

- Second option is the selection of Diffie-Hellman’s group (**DH Group**) of standardized global unique prime numbers and generators that will be used to provide secure asymmetric key exchange. The **DH Group** is used to encrypt this IKE communication. MB59XX supports two **DH groups** which are **DH Group 2**, which is a 1024-bit modular exponentiation group (MODP), and **DH Group 5**, which is a 1536-bit MODP group.
- Third option is the selection of **Encryption Algorithm** which can be either **AES-128** or **3DES**. This option will select the key size and encryption algorithm to be used in the IKEv1 Phase 1. The default value is **AES-128**.
- Fourth option is the selection of **Authentication Algorithm** which can be either **SHA1** or **MD5**. This option will select which hash algorithm will be used to authenticate packet data in the IKEv1 Phase 1. The default value is **SHA1**.
- Fifth option is the **SA Life Time** which must be set in unit of seconds. This value represents the lifetime of the IKE key which is dedicated at Phase 1 between both end host or network. The default **SA Life Time** is 10800 seconds. The configurable range for **SA Life Time** is between 300 to 86400 seconds.

Within the **Phase 2 SA**, there are five security options to be configured. Similar to **Phase 1 SA**, MB59XX and its peer device will negotiate or exchange proposals to determine which security parameters will be used in this Phase 2 SA. A Phase 2 proposal also includes a security **Protocol** (first option), which you can choose either Encapsulating Security Payload (**ESP**) or Authentication Header (**AH**). The second option is the **Perfect Forward Secrecy** which is a property of key-agreement protocol to ensure that a session key derived from a set of long-term keys cannot be compromised if one of the long-term keys is compromised in the future. In Phase 2 SA, MB59XX also supports two **DH groups** which are **DH Group 2** (1024-bit) and **DH Group 5** (1536-bit).

Then you can proceed to select encryption and authentication algorithms. Third option is the selection of **Encryption Algorithm** which can be either **AES-128** or **3DES**. This encryption algorithm will be used in the IPsec tunnel. The default setting is the **AES128**. Fourth option is the selection of **Authentication Algorithm** which can be either **SHA1** or **MD5**. This is the hash algorithm that will be used to authenticate packet data in the IPsec tunnel. The default selection is the **SHA1**. Finally, the last option is the **SA Life Time** for phase 2 which must be set in unit of seconds. The range of this setting can be from 180 to 86400 seconds. The default **SA Life Time** is 3,600 seconds.

The final part of the **IPsec Settings** is the **Dead Peer Detection Settings**. Dead peer detection (DPD) is a mechanism that MB59XX use to verify the existence of a remote Internet Key Exchange (IKE) gateway or the peer device of MB59XX. To detect the peer device, MB59XX will sent encrypted IKE Phase 1 notification payloads (or hello message) to its peer device and wait for DPD acknowledgement from the peer device. If MB59XX does not receive an acknowledge message during a specific time interval (**DPD timeout**), it will consider that the peer device is dead. Then, MB59XX will remove the Phase 1 Security Association and all Phase 2 Security Association of that dead peer device. Under the **Dead Peer Detection Settings**, you will have to choose the **DPD Action** that the MB59XX will perform if it found that the peer device is dead. You can choose either **Hold** to still hold the security association for the peer device and wait for the peer device to return or **Restart** to restart the security association process again. The **DPD Interval** is the period of time for sending the hello message to the peer device or the interval that MB59XX will repeatedly check the endpoint with keep-alive message. The **DPD interval** can be ranged from 1 to 65535 seconds. The default value for **DPD Interval** is 30 seconds. The **DPD Timeout** will be the time that MB59XX declares the peer device dead if it did not receive any reply or traffic from the peer device. If the keep-alive check fails before this time period expires, the MB59XX will take the PDP action. The **DPD Timeout** value range from 1 to 65535 seconds. The default value of **DPD Timeout** is 120 seconds. Description of each parameters in the IPsec Tunnels web page is summarized in Table 4.9

Table 4.9 Description of Parameters in IPsec Tunnels Web Page

Field Name	Description	Default Value	
<b>General Settings</b>			
<b>IPsec</b>	Enable the IPsec Tunnel	Disable	
<b>NAT Traversal</b>	Enable the NAT Traversal mechanism	Enable	
<b>Peer Address</b>	IP address of the remote device which can be dynamic (any address) or static (fixed address)	Dynamic	
<b>Remote Subnet</b>	Remote subnet can be either None (Host only) or Network (IP and Netmask)	None (Host Only)	
<b>Local Subnet</b>	Local subnet can be either None (Host Only) or Network (IP and Netmask)	None (Host Only)	
<b>Connection type</b>	Tunnel mode or Transport mode	Tunnel	
<b>Authentication Settings</b>			
<b>Method</b>	Pre-Shared Key	secrets	
<b>IKE Settings</b>			
<b>Phase 1 SA</b>	<b>Mode</b>	Choose how IKE negotiation is performed between Main Mode and Aggressive Mode	Main Mode
	<b>DH Group</b>	Diffie-Hellman groups, determine the strength of the key used in the key exchange process: DH Group 2 (1024-bit) or DH Group 5 (1536-bit)	Group 2 (1024-bit)
	<b>Encryption Algorithm</b>	Encryption algorithm used in the key exchange process: Either 3DES or AES	AES128
	<b>Authentication Algorithm</b>	Hash algorithm used to authenticate packet data in the key exchange process of IKEv1 phase 1: Either MD5 or SHA1	SHA1
	<b>SA Life Time</b>	How long a particular instance of a connection (a set of encryption/authentication keys for user packets) should last, from successful negotiation to expiry. The value can be from 300 to 86,400 seconds.	3600
<b>Phase 2 SA</b>	<b>Protocol</b>	Choose how IP packet will be encrypted and verify: either Encapsulate Security Payload (ESP) or IP Authentication Header (AH)	ESP
	<b>Perfect Forward Secrecy</b>	Diffie-Hellman groups for Perfect Forward Secrecy of keys, determine the strength of the key used in the key exchange process: DH Group 2 (1024-bit) or DH Group 5 (1536-bit)	Group 2 (1024-bit)
	<b>Encryption Algorithm</b>	Select which key size and encryption algorithm will be used in IPsec tunnel: either 3DES or AES128	AES128
	<b>Authentication Algorithm</b>	Section of hash algorithm to be used to authenticate packet data in the IPsec tunnel: either MD5 or SHA1	SHA1
	<b>SA Life Time</b>	Value that represents the lifetime of the IKE key which is dedicated in Phase 2 between both end host or network. The available setting ranges is from 180 to 86,400 seconds.	28800
<b>Dead Peer Detection Settings</b>			
<b>DPD Action</b>	Select either Hold or Restart the tunnel's security association for the peer. Note that Hold is suitable for a statistically defined tunnel.	Hold	
<b>DPD Interval</b>	Duration of time for sending hello message to the peer device: value from 1 to 65535 seconds.	30 seconds	
<b>DPD Timeout</b>	Duration of time to declare that the peer is dead: value from 1 to 65535 seconds.	120 seconds	

After finishing the **IPsec settings** configuration, please click the **Save** button to save all changes that have been made. If you would like to discard any setting, please click the **Cancel** button.

#### 4.14.2 IPsec Status

On this web page, you can check the status of your IPsec connection between MB59XX and its peer device in different connection types and modes. The first information is the **Peer Address** which is the IP address of the other device that is connected to MB59XX. The second information is the **VPN Tunnel's** status. The third information is the **Status** of the IPsec connection which can be **Disabled, Listening, or Connected**. shows the **IPsec Status** web page under the **IPsec Settings** menu. There are three buttons at the end of the web page which are **Connect, Disconnect, and Refresh**. The **Connect** and **Disconnect** buttons allow you to establish or tear down the IPsec connection. The **Refresh** button enable you to check the latest status of the connection.

#### IPsec > Status

---

Current Status	
Peer Address	
VPN Tunnel	
Status	Disabled

Figure 4.53 IPsec Status Web Page

#### 4.14.3 Examples of IPsec Settings

The following subsections provide examples of **IPsec settings**. However, each example will be focused only on the **General Settings** part. The other parts of the **IPsec Settings** can be configured according to the user's preference. Please consult previous section on the details of **Authentication Settings, IKE Settings, and Dead Peer Detection Settings**. **Note** that the network-to-network (or subnet-to-subnet) connections are now supported in new firmware of MB59XX.

##### 4.14.3.1 Host-to-Host Connections

Two scenarios can be configured for host-to-host connections: with static peer and with dynamic peer. A host-to-host topology for both scenarios is illustrated in Figure 4.54. Please follow the steps provided next for each scenario to set the **General Settings**.

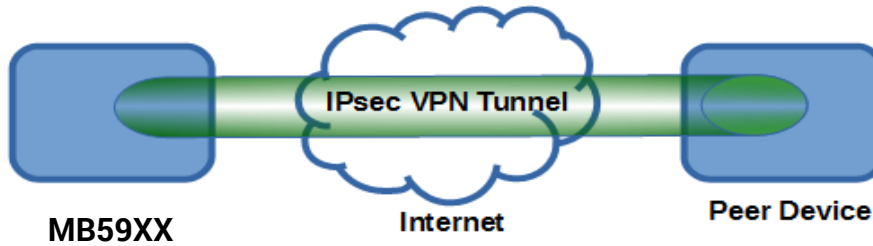


Figure 4.54 IPsec VPN Tunnel with Host-to-Host Topology

**Scenario: host-to-host with static peer as shown in Figure 4.55**

- Check the **Enable** box for **IPsec**.
- In the **Peer Address** field, select the **Static** option and enter the peer IPv4 address.  
**Note:** When peer address is entered as the static address, the MB59XX acts as an **initiator** which takes the initiative and establishes a connection. MB59XX also acts as a **responder** and passively accepts the connection initiated by the remote gateway.
- Select the radio button for **None (Host Only)** in the **Remote Subnet** field.
- Since this VPN connection is established on two hosts, the **Connection Type** option can be either **Transport** or **Tunnel**.

General Settings	
IPsec	<input checked="" type="checkbox"/> Enable
Peer Address	<input type="radio"/> Dynamic <input checked="" type="radio"/> Static: <input type="text" value="172.16.1.1"/>
Remote Subnet	<input checked="" type="radio"/> None (Host Only) <input type="radio"/> Network: <input type="text" value="192.168.1.0"/> / <input type="text" value="24"/>
Local Subnet	<input checked="" type="radio"/> None (Host Only) <input type="radio"/> Network: <input type="text" value="10.0.50.0"/> / <input type="text" value="24"/>
Connection Type	<input type="text" value="Tunnel"/> ▼

Figure 4.55 General Settings for Host-to-Host with Static Peer

**Scenario: host-to-host with dynamic peer as shown in Figure 4.56**

- Check the **Enable** box for **IPsec**.
- In the **Peer Address** field, select the **Dynamic** option.  
**Note:** When VPN connects to a peer with dynamic IP address, the MB59XX acts as a **responder** and passively accepts the connection initiated by the remote gateway.
- The remaining settings are the same as the host-to-host with static peer scenario described above.

General Settings	
IPsec	<input checked="" type="checkbox"/> Enable
Peer Address	<input type="radio"/> Dynamic <input type="radio"/> Static: <input type="text"/>
Remote Subnet	<input type="radio"/> None (Host Only) <input type="radio"/> Network: <input type="text" value="192.168.1.0"/> / <input type="text" value="24"/>
Local Subnet	<input type="radio"/> None (Host Only) <input type="radio"/> Network: <input type="text" value="10.0.50.0"/> / <input type="text" value="24"/>
Connection Type	<input type="text" value="Tunnel"/> ▼

Figure 4.56 General Settings for Host-to-Host with Dynamic Peer

#### 4.14.3.2 Host-to-Network Connections

Two scenarios can also be configured for host-to-network (or host-to-subnet or host-to-site) connections: with static peer and with dynamic peer. Note that the MB59XX is the host in these scenarios. A host-to-network topology for both scenarios is illustrated in Figure 4.57. Please follow the steps provided next for each scenario to set the **General Settings**.

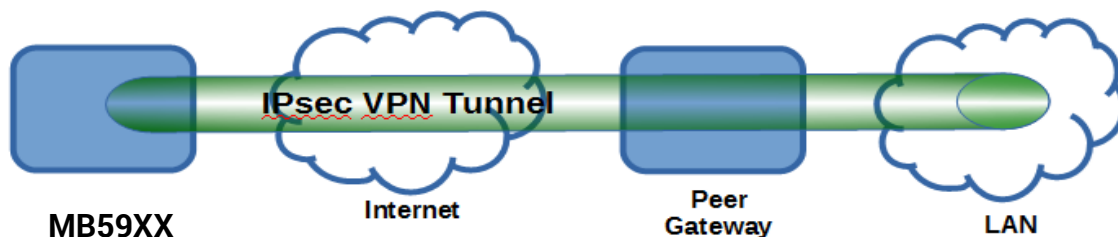


Figure 4.57 IPsec VPN Tunnel with Host-to-Network Topology

#### Scenario: host-to-network with static peer as shown in Figure 4.58

- Check the **Enable** box for **IPsec**.
- In the **Peer Address** field, select the **Static** option and enter the peer IPv4 address.  
**Note:** When peer address is entered as a static address, MB59XX is an **initiator** which takes the initiative and establish a connection, or can be a **responder** waiting for connection. MB59XX also acts as a **responder** and passively accepts the connection initiated by the remote gateway.
- Set the network IPv4 address in the **Remote Subnet** with the number of bits for subnet mask in “address prefix length” or behind the “/” symbol.
- Because this IPsec VPN connection has a subnet at one end, the **Connection Type** option must be set to **Tunnel** only.

General Settings	
IPsec	<input checked="" type="checkbox"/> Enable
Peer Address	<input type="radio"/> Dynamic <input checked="" type="radio"/> Static: <input type="text" value="172.16.1.1"/>
Remote Subnet	<input type="radio"/> None (Host Only) <input checked="" type="radio"/> Network: <input type="text" value="192.168.1.0"/> / <input type="text" value="24"/>
Local Subnet	<input checked="" type="radio"/> None (Host Only) <input type="radio"/> Network: <input type="text" value="10.0.50.0"/> / <input type="text" value="24"/>
Connection Type	<input type="text" value="Tunnel"/> ▼

Figure 4.58 General Settings for Host-to-Network with Static Peer

**Scenario: host-to-network with dynamic peer as shown in Figure 4.59**

- Check the **Enable** box for **IPsec**.
- In the **Peer Address** field, select the **Dynamic** option.  
**Note:** When VPN connection is set to a peer with dynamic IP address, MB59XX will act as a **responder** and will passively accept the connection initiated by the remote gateway.
- Set the network IPv4 address in the **Remote Subnet** with the number of bits for subnet mask in “address prefix length” or behind the “/” symbol.
- Because this IPsec VPN connection has a subnet at one end, the **Connection Type** option must be set to **Tunnel** only.

General Settings	
IPsec	<input checked="" type="checkbox"/> Enable
Peer Address	<input checked="" type="radio"/> Dynamic <input type="radio"/> Static: <input type="text"/>
Remote Subnet	<input type="radio"/> None (Host Only) <input checked="" type="radio"/> Network: <input type="text" value="192.168.1.0"/> / <input type="text" value="24"/>
Local Subnet	<input checked="" type="radio"/> None (Host Only) <input type="radio"/> Network: <input type="text" value="10.0.50.0"/> / <input type="text" value="24"/>
Connection Type	<input type="text" value="Tunnel"/> ▼

Figure 4.59 General Settings for Host-to-Network with Dynamic Peer

**4.14.3.3 Network-to-Network (Subnet-to-Subnet) Connections**

Two scenarios can also be configured for network-to-network (or subnet-to-subnet) connections: with static peer or with dynamic peer. A VPN tunnel will be created between two separate private sub-networks. Note that the MB59XX is the gateway to a local network in these scenarios. A network-to-network topology for both scenarios is illustrated in Figure 4.60. Please follow the steps provided next for each scenario to set the **General Settings**.

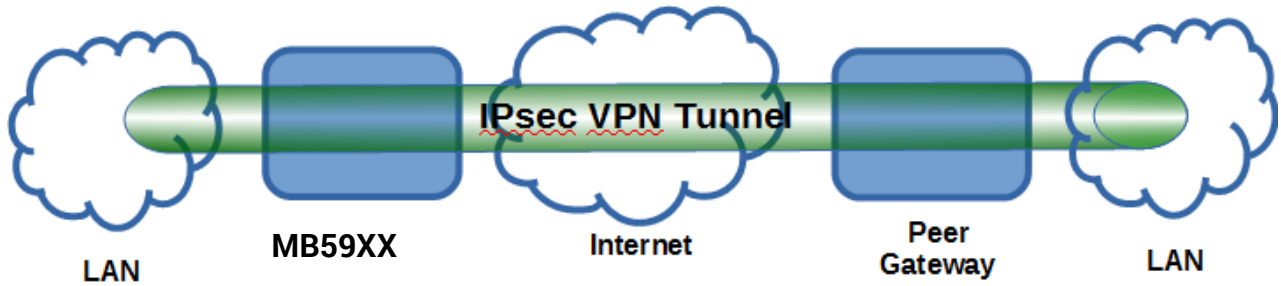


Figure 4.60 IPsec VPN Tunnel with Network-to-Network Topology

**Scenario: network-to-network with static peer as shown in Figure 4.61**

- Check the **Enable** box for **IPsec**.
- In the **Peer Address** field, select the **Static** option and enter the peer IPv4 address.  
**Note:** When peer address is entered as a static address, MB59XX is an **initiator** which takes the initiative and establish a connection, or can be a **responder** waiting for connection. MB59XX also acts as a **responder** and passively accepts the connection initiated by the remote gateway.
- Set the network IPv4 address in the **Remote Subnet** with the number of bits for subnet mask in “address prefix length” or behind the “/” symbol.
- Set the network IPv4 address in the **Local Subnet** with the number of bits for subnetmask in “address prefix length” or behind the “/” symbol.
- Because this IPsec VPN connection has subnets at both ends, the **Connection Type** option must be set to **Tunnel** only.

General Settings	
IPsec	<input checked="" type="checkbox"/> Enable
Peer Address	<input type="radio"/> Dynamic <input checked="" type="radio"/> Static: <input type="text" value="172.16.1.1"/>
Remote Subnet	<input type="radio"/> None (Host Only) <input checked="" type="radio"/> Network: <input type="text" value="192.168.1.0"/> / <input type="text" value="24"/>
Local Subnet	<input type="radio"/> None (Host Only) <input checked="" type="radio"/> Network: <input type="text" value="10.0.50.0"/> / <input type="text" value="24"/>
Connection Type	<input type="text" value="Tunnel"/> ▼

Figure 4.61 General Settings for Network-to-Network with Static Peer

**Scenario: network-to-network with dynamic peer as shown in Figure 4.62**

- Check the **Enable** box for **IPsec**.
- In the **Peer Address** field, select the **Dynamic** option.  
**Note:** When VPN connection is set to a peer with dynamic IP address, MB59XX will act as a **responder** and will passively accept the connection initiated by the remote gateway.
- Set the network IPv4 address in the **Remote Subnet** with the number of bits for subnet mask in “address prefix length” or behind the “/” symbol.
- Set the network IPv4 address in the **Local Subnet** with the number of bits for subnetmask in “address prefix length” or behind the “/” symbol.
- Because this IPsec VPN connection has subnets at both ends, the **Connection Type** option must be set to **Tunnel** only.



General Settings	
IPsec	<input checked="" type="checkbox"/> Enable
Peer Address	<input checked="" type="radio"/> Dynamic <input type="radio"/> Static: <input type="text"/>
Remote Subnet	<input type="radio"/> None (Host Only) <input checked="" type="radio"/> Network: <input type="text" value="192.168.1.0"/> / <input type="text" value="24"/>
Local Subnet	<input type="radio"/> None (Host Only) <input checked="" type="radio"/> Network: <input type="text" value="10.0.50.0"/> / <input type="text" value="24"/>
Connection Type	<input type="text" value="Tunnel"/> ▼

Figure 4.62 General Settings for Network-to-Network with Dynamic Peer

## 4.15 System

### 4.15.1 Log Settings

This section allows the user to change the way to report the Log. The user can save his Log Event to the flash memory of the Modbus Gateway by checking the **Enable Log Event to Flash** box. To specify the contents of the Log, select different **Log Level** by changing the pull-down menu of the **Log Level**. There are two log levels available on the menu: **Level 3: (LOG\_ERR)** and **Level 4: (LOG\_WARNING)**. Figure 4.63 shows a selection of **Log Level 4** which will keep **LOG\_WARNING**.

#### System > Log Settings

Enable Log Event To Flash	<input type="checkbox"/>
Log Level	4: (LOG_WARNING) ▾

Save

Figure 4.63 Log Settings Web Page

### 4.15.2 System Log

This section lists current system events aside its properties (**Date, Time, Startup Time, Level, and Event**). Figure 4.64 shows an empty **System Log** page. The user can navigate through the system log by using **Last Page** or **Next Page** buttons. The user will have the option to show all events by clicking the **Show All Event** button and the option to clear them all by clicking on **Clear All Event** button.

#### System > System Log

Index	Date	Time	Startup Time	Level	Event
-------	------	------	--------------	-------	-------

Figure 4.64 System Log Web Page

### 4.15.3 Data Log

The log of Modbus's exchanged messages will be shown in the **Data Log** section and listed in Figure 4.65. This can be very useful for debugging and testing. The user can filter the data based on the **Interface** by using the drop-down box. All available interface will be listed in the box such as COM1, COM2, COM3, COM4, and TCP\_LinkXX. Then click on the **Query** button to list the data log based on the chosen interface. Traffic analysis in the system can be done here as well. Click the **Start** button to enable continuous data log collection or click **Stop** to end it. All data log can be cleared by clicking the **Clear** button. The user will be able to browse through the list of message by clicking on the **Last Page** or the **Next Page** buttons at the bottom of the log table. Finally, if the user would like to save the data log to a file on the local PC, please click on the **Export** button.

System > Data Log

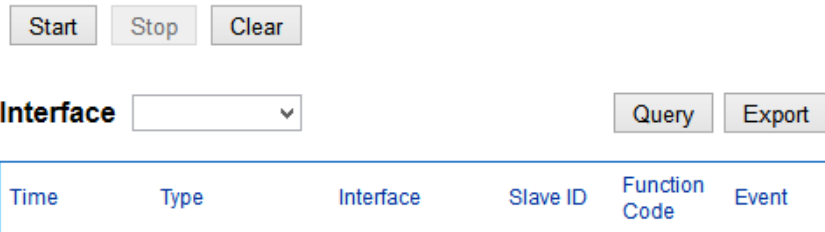


Figure 4.65 Data Log Web Page

4.15.4 Modbus Statistic

Modbus’s interface statistics are reported in this section as shown in Figure 4.66. For each interface, there is a **Net\_Connection** or socket which is an IP address bundled with its port number (only for TCP and VCOM interfaces), a **Data Type** of the interface (**ASCII**, **RTU**, or **TCP**), a **Mode** of the Interface (either **MASTER** or **SLAVE**), the count of received messages (**RxCnt**), the received bytes (**RxByte**), the count of transmitted message (**TxCnt**), and the transmitted bytes (**TxByte**). Click on the **Refresh** button to obtain the latest statistics of the Modbus’s interfaces.

System > Modbus Statistic

Interface	Net_Connection	Data Type	Mode	RxCnt	RxByte	TxCnt	TxByte
COM01		RTU	SLAVE	000000	0000000000	000000	0000000000
COM02		RTU	SLAVE	000000	0000000000	000000	0000000000
COM03		RTU	SLAVE	000000	0000000000	000000	0000000000
COM04		RTU	SLAVE	000000	0000000000	000000	0000000000
TCP(502)	0.0.0.0:502	TCP	MASTER	000000	0000000000	000000	0000000000

Figure 4.66 Modbus Statistics Web Page

4.15.5 Time

**Date and time** can be set manually or through **Network Time Protocol (NTP)** to automatically synchronize date and time of the Modbus Gateway with a **Time Server**. Figure 4.67 shows the **Time** setting page. The user can obtain the **Current System Time** by clicking on the **Refresh** button. Under the **System Time Setting** box, the user can set the **Time Zone** by selecting the proper time zone from the pull-down menu. Then, in order to choose the options of time setting, select either **NTP** or **Manual**. For auto-synchronization, check the radio button in front of **NTP** option. Then, proceed to fill in the IP address or hostname of the preferred time server such as time.nist.gov which is the default setting. If a hostname is entered, the DNS server should be configured properly following the procedure explained in Section o. Other options will be disabled if the **NTP** option is selected.

If the **Manual** option is selected, select the current **Date (Year, Month, Day)** and **Time (Hour, Minute, and Second)** from their corresponding pull-down menus under the **Manual Setting** box. In certain region, the daylight time saving is practiced. In order to enable it, check the **Enable Daylight Saving Time** checkbox and specify the **Start Date, End Date, and Offset** in the fields under **Daylight Save Setting** box as shown in the greyed out area of Figure 4.67.

After Time Setting is complete, click **Save Configuration** to save all changes that have been done. A **Save Successful** message will show up with a hyperlink to **restart** the device as shown in **Error! Reference source not found**. Click the **restart** hyperlink to apply the changes. Then, a message indicating **System Restarting** status with a counting down number will show up as shown in Figure 4.74. After a successful device’s restart, the web browser will be redirected to the Overview page as shown in Figure 4.8.

**System > Time**

By enabling NTP you allow to adjust and set the device internal time, relative to Greenwich Mean Time.

Current System Time	
2017/3/19 Sun 20:56:25	<input type="button" value="Refresh"/>

System Time Setting	
Time Zone	(GMT+08:00) Taipei
Time Setting	<input type="radio"/> NTP <input checked="" type="radio"/> Manual
<b>NTP Setting</b>	
NTP Server	time.nist.gov
<b>Manual Setting</b>	
Date	Year: 2017 / Month: Mar / Day: 19
Time	Hour:(0-23): 20 / Minute:(0-59): 56 / Second:(0-59): 25
<b>Daylight Saving Setting</b>	
<input type="checkbox"/> Enable Daylight Saving Time	
Start Date	Month: Jan / Week: 1st / Day: Sun / Hour: 0
End Date	Month: Jan / Week: 1st / Day: Sun / Hour: 0
Offset	1 hour(s)

Figure 4.67 Time Web Page

**4.15.6 Security**

The default security setting for the password is a standard password (default). To change security, enter the Security web page as shown in Figure 4.68, enter a password in the **Change Password** box. The user should enter the **Old Password** (enter nothing in case of a null password), the **New Password**, and the **Verified Password** (same

as the New Password). The password is case sensitive and limited to a maximum of 8 characters. After entering all required fields, click **Save Password** button to save the change. After the **Save Successfully** message showed up, the user will be prompted with a pop-up window to enter the **User name** and the **New Password** again for verification, as shown in Figure 4.69.

### System > Security

The default password is null, you can change the password by filling in the new password to New Password and Verified Password fields, be aware that password is case sensitive.


Change Password	
Old Password	<input type="text"/>
New Password	<input type="text"/>
Verified Password	<input type="text"/>

allow one to change the access methods to protect it against intrusion. All password protect function will use same password of above 'Change Password' setting data.

Security	
Web Console	<input checked="" type="radio"/> Enable <input type="radio"/> Disable
Reset Button Protect	<input checked="" type="radio"/> No <input type="radio"/> Yes

Figure 4.68 Security Web Page

Authentication Required ✕

 http://10.0.50.100 is requesting your username and password. The site says: "MB5904D-Sis"

User Name:

Password:

Figure 4.69 Authentication Required after a Password Change

The user can limit how the Modbus Gateway is accessed and controlled by changing the settings under the **Security** box in Figure 4.68. All password-protected features will use the same password whose setting is described in the previous paragraph. The user can enable or disable **Web Console** by clicking on the corresponding radio button. Additionally, the user can protect how the user accesses the device with a **Reset Button Protect** option by checking on either **No** or **Yes** radio buttons.

After Security Settings are set, click **Save Configuration** to save all changes that have been made. A **Save Successful** message will appear with a hyperlink asking to **restart** the device as shown in Figure 4.17. Please click the **restart** hyperlink to apply the changes. Then, a message indicating **System Restarting** status with a countdown will show up. After a successful restart, the web browser will be redirected to the Overview page as shown in Figure 4.6.

#### 4.15.7 Import/Export

Once all configurations are set and the device is working properly, the user may want to backup (**Export**) the configuration to a file. A backup configuration file can be used when a new firmware is uploaded and the device is reset to a factory default settings, or simply to prevent accidental loading of incompatible old settings. The backup file could also be used to efficiently deploy multiple Modbus Gateways of similar settings by restoring the settings to the devices by **importing** the corresponding file. Figure 4.70 depicts the Import/Export web page.

### System > Import/Export

---

Import a configuration file to the device.

Configuration File:

Browse...

No file selected.

Import Configuration

Export a configuration data from device and save to file.

Export Configuration

Figure 4.70 Import/Export Web Page

To import a configuration file from the computer, click on the **Browse...** button. Then, a pop-up window will ask the user to choose a configuration file (with .DAT extension). After selection, click **Open button** as shown in Fig.3-46. Then, click on the **Import Configuration** button to start the importing process.

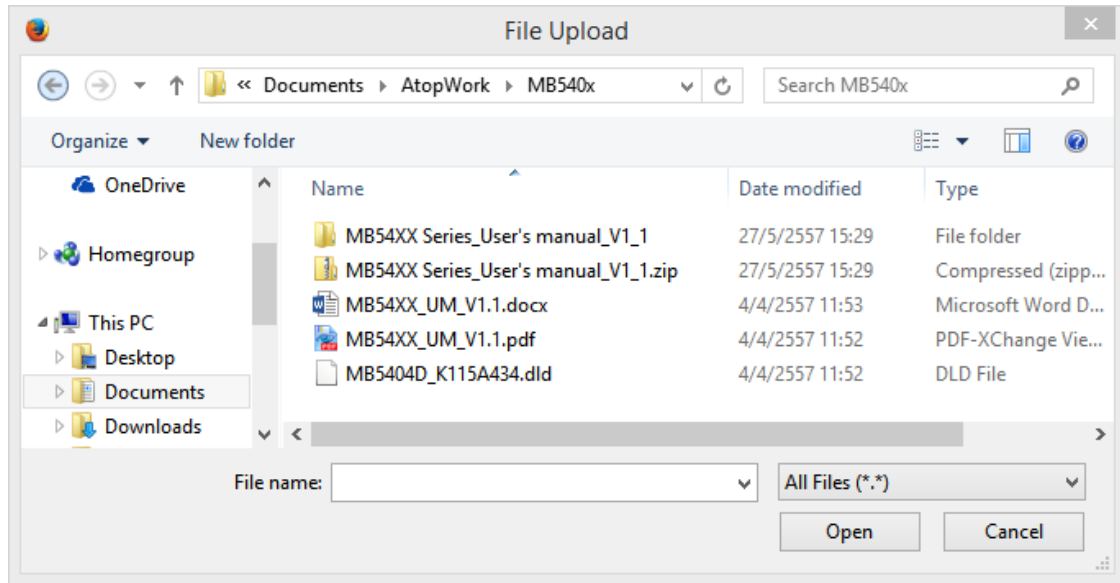


Figure 4.71 File Chooser for Uploading a Configuration File to Modbus Gateway

After importing is complete, the system will show a **Save Successful** message with a hyperlink to **restart** the device. Click the **restart** hyperlink to apply the changes. Then, a message indicating **System Restarting** status with a countdown will show up. After a successful device’s restart, the web browser will be redirected to the Overview page as shown in Figure 4.8.

In order to export the current configuration of the Modbus Gateway to a file for backup purposes, click the **Export Configuration** button as shown in Figure 4.70. Then, a pop-up window will ask to either **Open** the configuration file for viewing with a default application such as Notepad or to simply **Save** the configuration file to the preferred name and destination path as shown in Figure 4.72.

**System > Import/Export**

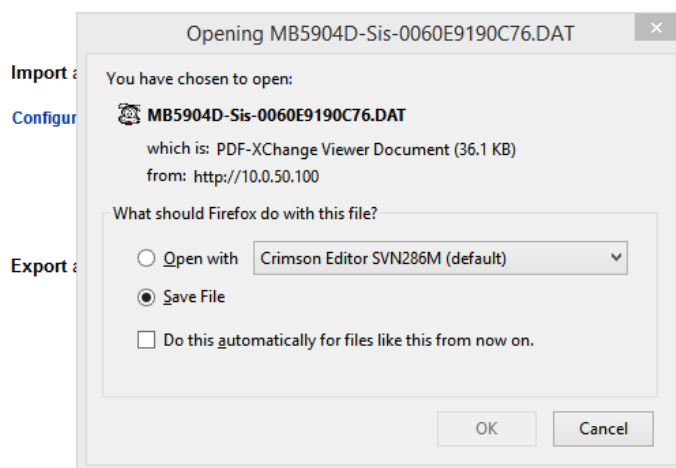


Figure 4.72 Export Configuration File from Modbus Gateway

**4.15.8 Factory Default**

A return to **Factory Default** function is available in Atop’s MB59XX Series. To restore all parameters of the Modbus Gateway to the original factory default setting, click **Set to Default and Restart** button as shown in Figure 4.73.

After a short moment, a message indicating **System Restarting** status with a countdown number will show up. After a successful device's restart, the web browser will be redirected to the Overview page as shown in Figure 4.8.

## System > Factory Default

---

Restore all parameters to default.

Set to Default and Restart

Figure 4.73 Factory Default Web Page

---

## 4.16 Restart

---

For some unexpected circumstances, the Modbus Gateway system may stop responding correctly. The user has the option to restart the device by clicking the **Restart** button as shown in Figure 4.74. The device's RUN LED will start blinking when the restart process is completed. Then, a message indicating **System Restarting** status with a countdown will show up. After a successful device's restart, the web browser will be redirected to the Overview page as shown in Figure 4.8.

### ReStart

---

When the system stops responding correctly, you can perform this. The restart will be complete when the RUN LED starts blinking.

Restart

Figure 4.74 Restart Web Page



## 5 Applications and Examples

On the device two different Slave ID mapping definitions are available, which represent the alias mode and the offset mode. Both Modbus ID definitions can be used to route the request command (from the Master) to the Slave node. Please see details of Slave ID setting mode in Section 4.8.6.

### 5.1 Using ID offset range mapping

If the Slave ID is continuous as shown in Figure 5.1, it is recommended to use the Offset mode in your configuration setting of ID mapping as shown in Figure 5.2.

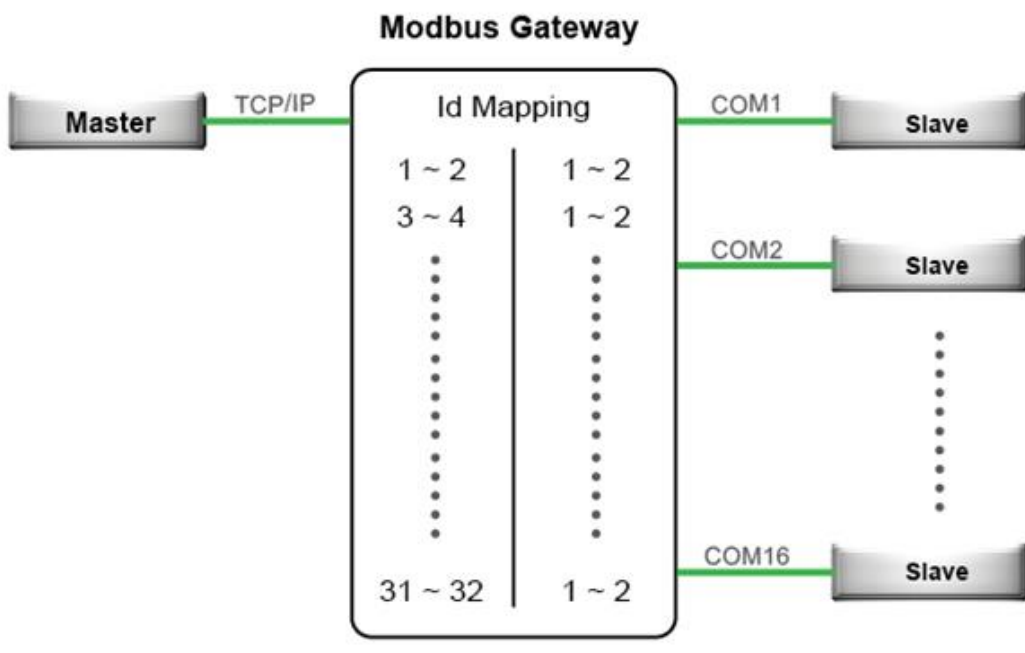


Figure 5.1 Continuous Slave ID Mapping Example

<input type="checkbox"/>	Entry No.	Protocol	Source	Mode	Slave ID Range (Virtual<->Real)
<input type="checkbox"/>	01	Modbus/RTU	COM1	Offset	001 - 002 <-> 001 - 002
<input type="checkbox"/>	02	Modbus/RTU	COM2	Offset	003 - 004 <-> 001 - 002
<input type="checkbox"/>	03	Modbus/RTU	COM3	Offset	005 - 006 <-> 001 - 002
<input type="checkbox"/>	04	Modbus/RTU	COM4	Offset	007 - 008 <-> 001 - 002
<input type="checkbox"/>	05	Modbus/RTU	COM5	Offset	009 - 010 <-> 001 - 002
<input type="checkbox"/>	06	Modbus/RTU	COM6	Offset	011 - 012 <-> 001 - 002
<input type="checkbox"/>	07	Modbus/RTU	COM7	Offset	013 - 014 <-> 001 - 002
<input type="checkbox"/>	08	Modbus/RTU	COM8	Offset	015 - 016 <-> 001 - 002
<input type="checkbox"/>	09	Modbus/RTU	COM9	Offset	017 - 018 <-> 001 - 002
<input type="checkbox"/>	10	Modbus/RTU	COM10	Offset	019 - 020 <-> 001 - 002
<input type="checkbox"/>	11	Modbus/RTU	COM11	Offset	021 - 022 <-> 001 - 002
<input type="checkbox"/>	12	Modbus/RTU	COM12	Offset	023 - 024 <-> 001 - 002
<input type="checkbox"/>	13	Modbus/RTU	COM13	Offset	025 - 026 <-> 001 - 002
<input type="checkbox"/>	14	Modbus/RTU	COM14	Offset	027 - 028 <-> 001 - 002
<input type="checkbox"/>	15	Modbus/RTU	COM15	Offset	029 - 030 <-> 001 - 002
<input type="checkbox"/>	16	Modbus/RTU	COM16	Offset	031 - 032 <-> 001 - 002

Figure 5.2 Entries of Slave ID Mapping in Offset Mode

## 6 Specifications

### 6.1 Hardware

Table 6.1 Hardware Specification

System			
CPU	32-bit ARM Based TI CPU AM3354 800MHz (except MB5908A/MB5916A use AM3352 1GHz)		
Flash Memory	32MB		
RAM	MB5901 DDR2 128MB MB5901B DDR2 256MB MB5904D DDR3 256MB MB5908A/16A/MB5908/16 DDR3 256MB		
EEPROM	8 KB		
Reset	Built-in Recessed Key (Restore to Factory Defaults)		
Watchdog	Hardware built-in		
Network			
Ethernet Interface	IEEE 802.3 10BaseT IEEE 802.3u 100BaseT(X) IEEE 802.3ac 1000BaseT(X) – SFP version of MB5904D only IEEE 802.3af (PoE PD) –selected MB5901 and MB5904D versions can be powered through PoE Connection: SFP or RJ45		
Protocol	ICMP	DNS	SMTP
	TCP	DHCP Client	NTP
	UDP	SNMPv1,v2c,v3	ARP
	IPv4	Modbus	Telnet
	HTTP	TCP/ASCII/RTU	RFC2217
	Syslog		
Serial			
Serial Interface	RS-232/RS-422/RS-485 Software Selectable (Default: RS-232) <ul style="list-style-type: none"> <li>The first port available on MB5901B is RS-232/RS-485</li> <li>The second port available on MB5901B-IO-X is only RS-232</li> </ul> The isolation version (-SiS) on MB5908/MB5916/MB5908A/MB5916A supports only RS-422/ RS-485		
Serial Connector	Connector Type <ul style="list-style-type: none"> <li>MB5916 -16 Serial Ports (RJ45)</li> <li>MB5908 - 8 Serial Ports (RJ45)</li> <li>MB5916A – 16 Serial Ports (TB-5 or DB-9)</li> <li>MB5908A – 8 Serial Ports (TB-5 or DB-9)</li> <li>MB5904 – 4 Serial Ports (TB-5 or DB-9)</li> <li>MB5901 – 1 Serial Port (TB-5 or DB-9)</li> <li>MB5901B – 1 Serial Port (TB-14 or DB-9) – includes I/O</li> </ul>		
Protection	MB5901/MB5901B no isolation MB5904D/ MB5908A/16A (optional 3V) MB5908/16 (optional 2.5kV)		
Serial Port Communication	Baud-rate: 1200 bps ~ 921600 bps Parity: None, Even, Odd, Mark, or Space Data Bits: 5, 6, 7, 8		

	Stop Bits: 1, 2 Software Selectable Flow Control: RTS/CTS (RS-232 only), XON/XOFF, None
<b>LED Indicator</b>	
LED indication	Power x 2 (MB5901- MB5901B – MB5908 – MB5916 x 1) RUN x 1 ALARM x 1 LAN: <ul style="list-style-type: none"> <li>• x 2 (all versions except MB5908A and MB5916A)</li> <li>• x 6 (MB5908A and MB5916A only)</li> </ul> COM port: <ul style="list-style-type: none"> <li>• x 16 (MB5916 and MB5916A);</li> <li>• x 8 (MB5908 and MB5908A);</li> <li>• x 4 (MB5904D);</li> <li>• x 1 (MB5901 and MB5901B)</li> </ul>
<b>Power Requirement &amp; EMC</b>	
Input	MB5908/ MB5916 : <ul style="list-style-type: none"> <li>• Single 100~240 VAC (EU/US versions)</li> <li>• Single 24~48 VDC (DC version)</li> </ul> MB5908A/ MB5916A <ul style="list-style-type: none"> <li>• Redundant 100~240 VAC or 100~370 VDC (TB)– HV vers.</li> <li>• Redundant 24~48 VDC- DC version</li> </ul> MB5901/MB5901B : Single 9~48 VDC MB5904D : Redundant 9~48 VDC
Consumption	Max.17.5 W (MB5908 /MB5916) Max. 6W (MB5901) Max. 7.8W(MB5904D) Max. 17.5W(MB5908A/MB5916A) Max. 7.2W(MB5901B)
EMC	FCC Part 15, Subpart B, Class A EN 55032, Class B, EN 61000-6-2, Class B EN 61000-3-2, EN 61000-3-3 EN 55024, EN 61000-6-4 IEC 61850-3 / IEEE 1613 (MB5908A and MB5916A only)
<b>Mechanical</b>	
Dimensions (W x H x D, mm)	MB5901: 32 mm x 110 mm x 90 mm (1.26 x 4.33 x 3.54 in) MB5901B: 32 mm x 122mm x 92 mm (1.26 x 4.8 x 3.62 in) MB5904D: 55 mm x 145 mm x 113mm (2.17 x 5.17 x 4.45 in) MB5908: 436 mm x 43.5 mm x 200 mm (17.17 x 1.71 x 7.87 in) MB5916: 436 mm x 43.5 mm x 200 mm (17.17 x 1.71 x 7.87 in) MB5908A: 440.6mm x 44 mm x 309 mm (17.35 x 1.73 x 12.17 in) MB5916A: 440.6mm x 44 mm x 309 mm (17.35 x 1.73 x 12.17 in)
Enclosure	IP30 protection, metal housing
<b>Environmental</b>	
Temperature	Operations -40°C ~ 85°C (-40°F ~ 185°F) (except MB5901B -40°C ~ 70°C and MB5908/MB5916 -20°C ~ 70°C)
	Storage -40°C ~ 85°C (-40°F ~ 185°F)
Humidity	5% ~ 95%, 55°C Non-condensing

## 6.2 Serial port Pin Assignments

### 6.2.1 MB5901 Pin Assignments

DB9 to RS-232/RS-485/RS-422 connectors

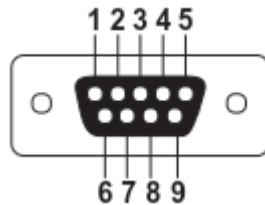


Figure 6.1 DB9 Pin Number

Table 6.2 MB5901 Pin Assignment for DB9 to RS-232/RS422/RS-485 Connectors

Pin#	RS-232 Full Duplex	RS-422 Full Duplex	RS-485 Half Duplex
1	DCD	N/A	N/A
2	RxD	TxD+	N/A
3	TxD	RxD+	Data+
4	DTR	N/A	N/A
5	SG (Signal Ground)	SG (Signal Ground)	SG (Signal Ground)
6	DSR	N/A	N/A
7	RTS	RxD-	Data-
8	CTS	TxD-	N/A
9	RI	N/A	N/A

5-Pin Terminal Block to RS-485/RS-422 connectors

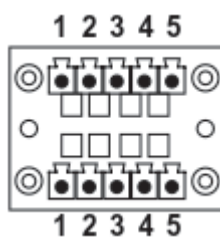


Figure 6.2 Terminal Block (TB-5) Pin Number

Table 6.3 MB5901 Pin Assignment for 5-Pin Terminal Block to RS-232/RS-422/RS-485 Connectors

Pin#	RS-232	RS-422 4-Wire RS-485	2-W RS-485
1	RxD	TxD+	N/A
2	CTS	TxD-	N/A
3	TxD	RxD+	Data+
4	RTS	RxD-	Data-
5	SG (Signal Ground)	SG (Signal Ground)	SG (Signal Ground)

6.2.2 MB5904D Pin Assignments

DB9 to RS-232/RS-485/RS-422 connectors

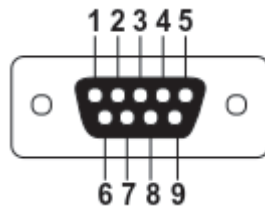


Figure 6.3 DB9 Pin Number

Table 6.4 MB5904D Pin Assignment for DB9 to RS-232/RS422/RS-485 Connectors

Pin#	RS-232 Full Duplex	RS-422 Full Duplex	RS-485 Half Duplex
1	DCD	N/A	N/A
2	RxD	TxD+	Data+
3	TxD	RxD+	N/A
4	DTR	N/A	N/A
5	SG (Signal Ground)	SG (Signal Ground)	SG (Signal Ground)
6	DSR	N/A	N/A
7	RTS	RxD-	N/A
8	CTS	TxD-	Data-
9	RI	N/A	N/A

5-Pin Terminal Block to RS-485/RS-422 connectors

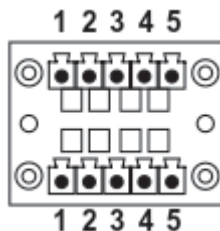


Figure 6.4 Terminal Block (TB-5) Pin Number

Table 6.5 MB5904D Pin Assignment for 5-Pin Terminal Block to RS-232/RS-422/RS-485 Connectors

Pin#	RS-232	RS-422 4-Wire RS-485	2-W RS-485
1	RxD	TxD+	Data+
2	CTS	TxD-	Data-
3	TxD	RxD+	N/A
4	RTS	RxD-	N/A
5	SG (Signal Ground)	SG (Signal Ground)	SG (Signal Ground)

6.2.3 MB5901B Pin Assignments

DB9 to RS-232/RS-485/RS-422 connectors

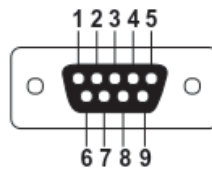


Figure 6.5 DB9 Pin Number

Table 6.6 MB5901B Pin Assignment for DB9 to RS-232/RS-485 Connector

Pin#	RS-232 Full Duplex	RS-485 Half Duplex
1	DCD	N/A
2	RxD	N/A
3	TxD	Data+
4	DTR	N/A
5	SG (Signal Ground)	SG (Signal Ground)
6	DSR	N/A
7	RTS	Data-
8	CTS	N/A
9	RI	N/A

2 x 7-pin Male Terminal Block for RS-232/485(COM 1),RS-232(COM 2) Relay and DI

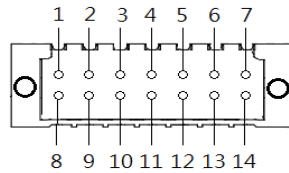


Figure 6.6 2 x 7-pin Male Terminal Block

Table 6.7 MB5901B 2 x 7-pin Male TB for RS-232/485(COM 1),RS-232(COM 2) Relay and DI pin-assignment

Pin#	DI and Relay	COM1 (RS-232)	COM1 (RS-485)	COM2 (RS-232)
1	DI1	<i>Dedicated for DI/DO</i>	<i>Dedicated for DI/DO</i>	<i>Dedicated for DI/DO</i>
2	DI2	<i>Dedicated for DI/DO</i>	<i>Dedicated for DI/DO</i>	<i>Dedicated for DI/DO</i>
3	Relay 1 -	<i>Dedicated for DI/DO</i>	<i>Dedicated for DI/DO</i>	<i>Dedicated for DI/DO</i>
4	Relay 1+	<i>Dedicated for DI/DO</i>	<i>Dedicated for DI/DO</i>	<i>Dedicated for DI/DO</i>
5	Relay 2 -	<i>Dedicated for DI/DO</i>	<i>Dedicated for DI/DO</i>	<i>Dedicated for DI/DO</i>
6	Relay 2+	<i>Dedicated for DI/DO</i>	<i>Dedicated for DI/DO</i>	<i>Dedicated for DI/DO</i>
7	<i>Dedicated for COM</i>	SG (Signal Ground)	SG (Signal Ground)	-
8	<i>Dedicated for COM</i>	Rx	-	-
9	<i>Dedicated for COM</i>	CTS	-	-
10	<i>Dedicated for COM</i>	Tx	Data +	-
11	<i>Dedicated for COM</i>	RTS	Data -	-
12	<i>Dedicated for COM</i>	-	-	SG (Signal Ground)
13	<i>Dedicated for COM</i>	-	-	Rx
14	<i>Dedicated for COM</i>	-	-	Tx

6.2.4 MB5908A/MB5916A Pin Assignments

DB9 to RS-232/RS-485/RS-422 connectors

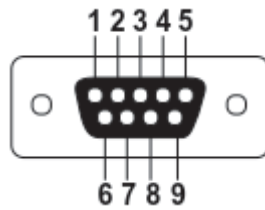


Figure 6.7 DB9 Pin Number

Table 6.8 MB5908A/16A Pin Assignment for DB9 to RS-232/RS422/RS-485 Connectors

Pin#	RS-232	RS-422	RS-485
1	-	-	-
2	RxD	TxD+	Data+
3	TxD	RxD+	-
4	-	-	-
5	SG (Signal Ground)	SG (Signal Ground)	SG (Signal Ground)
6	-	-	-
7	RTS	RxD-	-
8	CTS	TxD-	Data-
9	-	-	-

5-Pin Terminal Block to RS-232/RS-485/RS-422 connectors

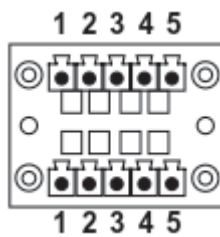


Figure 6.8 Terminal Block (TB-5) Pin Number

Table 6.9 MB5908A/16A Pin Assignment for 5-Pin Terminal Block to RS-232/RS-422/RS-485 Connectors

Pin#	RS-232	RS-422 4-Wire RS-485	2-W RS-485
1	RxD	TxD+	Data +
2	CTS	TxD-	Data -
3	TxD	RxD+	-
4	RTS	RxD-	-
5	SG (Signal Ground)	SG (Signal Ground)	SG (Signal Ground)



### 6.2.5 MB5908/MB5916 Pin Assignments

#### RJ45 to RS-232/RS-485/RS-422 connectors

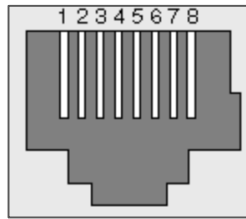


Figure 6.9 MB5908/MB5916 Serial port on RJ45 Pin Numbering

Table 6.10 MB5908/16 Pin Assignment for RJ45 to RS-232/RS422/RS-485 Connectors

Pin#	RS-232	RS-422	RS-485
1	RTS	-	-
2	DTR	Tx -	-
3	TxD	Tx +	-
4	SG (Signal Ground)	SG (Signal Ground)	SG (Signal Ground)
5	SG (Signal Ground)	SG (Signal Ground)	SG (Signal Ground)
6	RxD	Rx +	Data +
7	DSR	Rx -	Data -
8	CTS	-	-

## 6.3 LED Indicators

Table 6.11 Color Interpretation of LED Indicators

Name	Color	Message
PWR (Power)	 (Steady Green)	Power ON
RUN (Ready)	 (Steady On/Off Green)	System is not ready or halt
	 (Blinking Green)	AP firmware is running normally
ALM (Alarm)	 (Steady Red)	Alarm is triggered by user defined events
	 (Light Off)	Alarm is not triggered by user defined events
COM	 (Blinking Green)	COM port is transmitting data
	 (Light Off)	COM port is not transmitting data
LAN	 (Steady Amber)	Data is transmitting at 10Mbps
	 (Light Off Green)	Ethernet is disconnected
	 (Blinking Green)	Data is transmitting at 100Mbps
LAN (On LED Panel)	 (Steady Green)	Ethernet is connected
	 (Light Off Green)	Ethernet is disconnected
	 (Blinking Green)	Data is transmitting on this port
SFP (On LED Panel)	 (Steady Green)	SFP port is connected
	 (Light Off Green)	SFP port is disconnected
	 (Blinking Green)	Data is transmitting on this port

## 6.4 Software

Table 6.12 Software Tools and Utilities

Software	
Utility	Windows Virtual COM Driver and Linux TTY Driver: Linux 2.4.x, Linux 2.6.x, 3.x
Configuration Tool	<ul style="list-style-type: none"> <li>■ Web console</li> <li>■ Serial console</li> <li>■ SSH console</li> <li>■ Telnet console</li> <li>■ <b>Device Management Utility©</b></li> </ul>

## 7 Warranty

### Limited Warranty Conditions

Products supplied by Atop Technologies Inc. are covered in this warranty for undesired performance or defects resulting from shipping, or any other event deemed to be the result of Atop Technologies Inc. mishandling. The warranty doesn't cover; however, equipment which has been damaged due to accident, misuse, abuse, such as:

- Use of incorrect power supply, connectors, or maintenance procedures
- Use of accessories not sanctioned by us
- Improper or insufficient ventilation
- Improper or unauthorized repair
- Replacement with unauthorized parts
- Failure to follow our operating Instructions
- Fire, flood, "Act of God", or any other contingencies beyond our control.

### RMA and Shipping Reimbursement

- Customers must always obtain an authorized **"RMA" number** from us before shipping the goods to be repaired.
- When in normal use, a sold product shall be replaced with a new one within 3 months upon purchase. The shipping cost from the customer to us will be reimbursed.
- After 3 months and still within the warranty period, it is up to us whether to replace the unit with a new one; normally, as long as a product is under warranty, all parts and labor are free-of-charge to the customers.
- After the warranty period, the customer shall cover the cost for parts and labor.
- Three months after purchase, the shipping cost from the customer to us will not be reimbursed, but the shipping costs from us to the customer will be paid by us.

### Limited Liability

Atop Technologies Inc. shall not be held responsible for any consequential losses from using our products.

### Warranty

Atop Technologies Inc. provides a 5-year maximum warranty for Modbus Gateway products.



*Atop Technologies, Inc.*

[www.atoponline.com](http://www.atoponline.com)  
[www.atop.com.tw](http://www.atop.com.tw)

**TAIWAN HEADQUARTER:**

2F, No. 146, Sec. 1, Tung-Hsing Rd,  
30261 Chupei City, Hsinchu County  
Taiwan, R.O.C.  
Tel: +886-3-550-8137  
Fax: +886-3-550-8131

**ATOP CHINA BRANCH:**

3F, 75<sup>th</sup>, No. 1066 Building,  
Qingzhou North Road,  
Shanghai, China  
Tel: +86-21-64956231

**ATOP INDIA OFFICE:**

Abhishek Srivastava  
Head of India Sales  
Atop Communication Solution(P) Ltd.  
No. 22, Kensington Terrace,  
Kensington Rd,  
Bangalore, 560008, India  
Tel: +91-80-4920-6363  
E-mail: [Abhishek.S@atop.in](mailto:Abhishek.S@atop.in)

**ATOP INDONESIA BRANCH:**

Jopson Li  
Branch Director  
Wisma Lampung Jl.  
No. 40, Tomang Raya  
Jakarta, Barat, 11430, Indonesia  
Tel: +62-857-10595775  
E-mail: [jopsonli@atop.com.tw](mailto:jopsonli@atop.com.tw)

**ATOP EMEA OFFICE:**

Bhaskar Kailas (BK)  
Vice President (Business Development)  
Atop Communication Solution(P) Ltd.  
No. 22, Kensington Terrace,  
Kensington Rd,  
Bangalore, 560008, India  
Tel: +91-988-0788-559  
E-mail: [Bhaskar.k@atop.in](mailto:Bhaskar.k@atop.in)

**ATOP AMERICAs OFFICE:**

Venke Char  
Sr. Vice President & Head of Business  
11811 North Tatum Blvd, Suite 3031  
Phoenix, AZ 85028,  
United States  
Tel: +1-602-953-7669  
E-mail: [venke@atop.in](mailto:venke@atop.in)