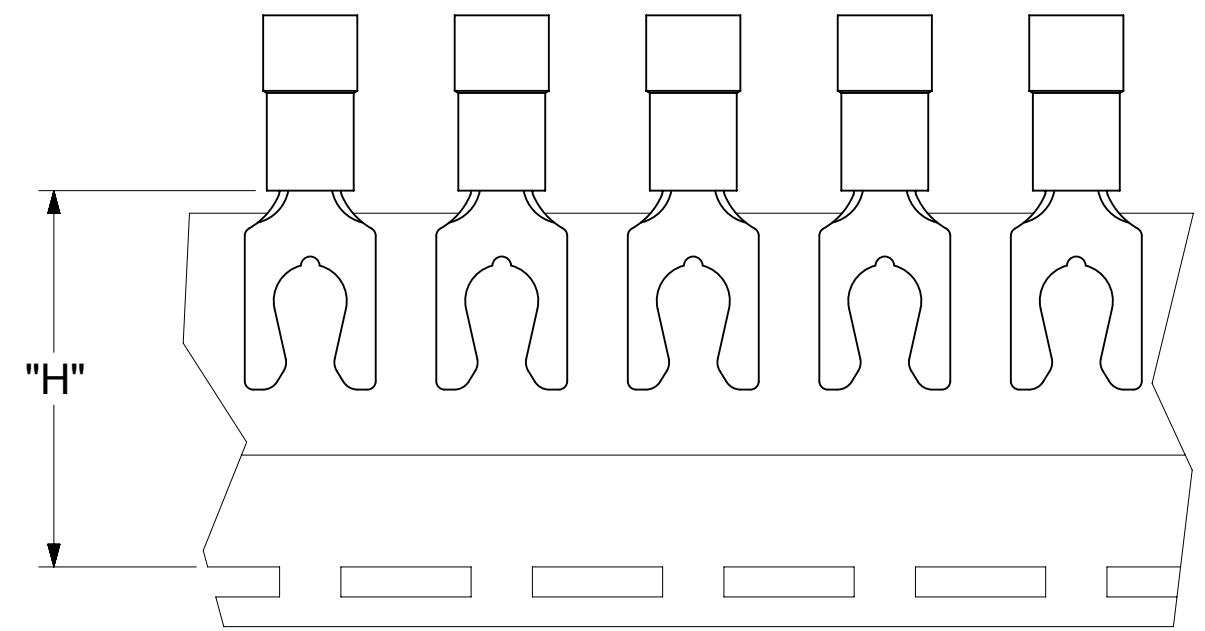
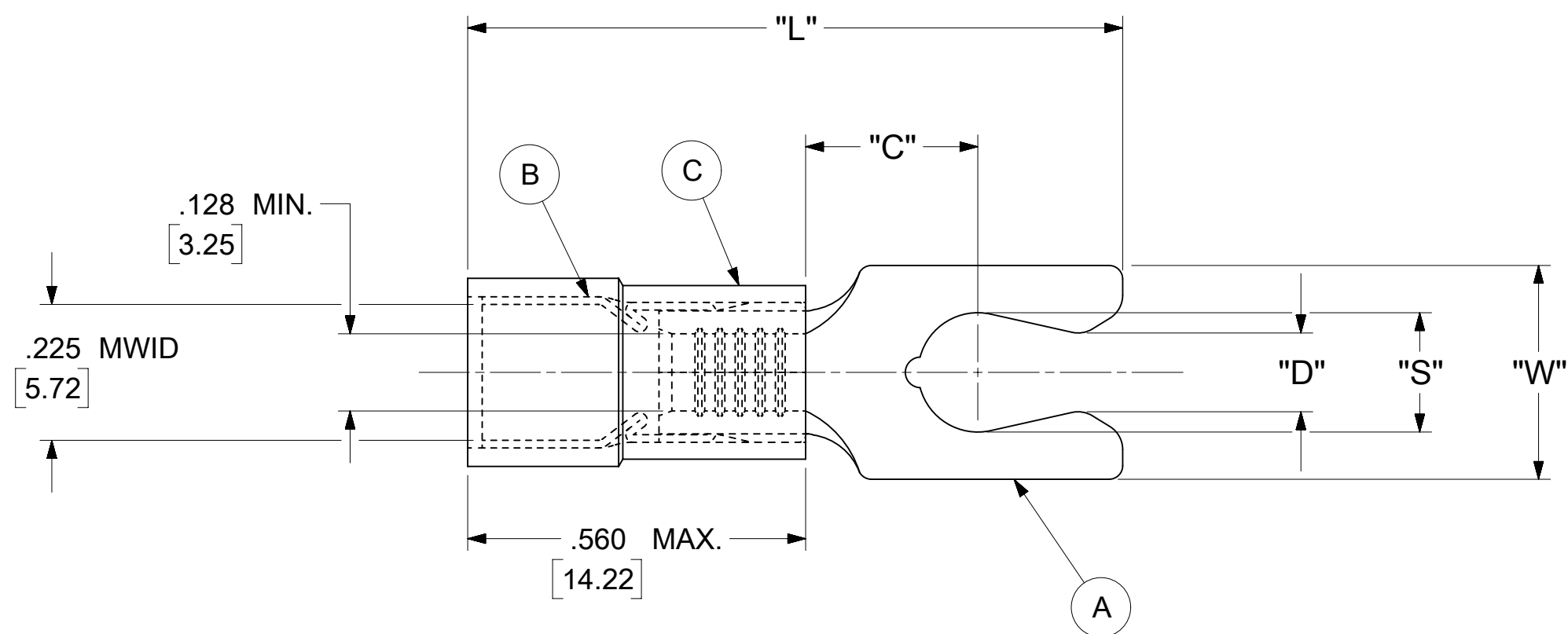


LOOSE PIECE		TAPE MOUNTED		SPECIFICATIONS							
MATERIAL NUMBER	ENGINEERING NUMBER	MATERIAL NUMBER	ENGINEERING NUMBER	STUD SIZE	"S" ±.005 [0.13]	"W" ±.010 [0.25]	"C" MIN.	"L" MAX.	"D" ±.005 [0.13]	"H"	STOCK ±.001 [0.025] THICKNESS
191150046	C-8718-08	191150047	C-8718-08T	8	.173 [4.39]	.310 [7.87]	.261 [6.63]	1.031 [26.19]	.139 [3.53]	.980 [24.89]	.040 [1.02]
191150048	C-8719-10	191150049	C-8719-10T	10	.198 [5.03]	.330 [8.38]	.261 [6.63]	1.079 [27.41]	.156 [3.96]	.980 [24.89]	.040 [1.02]



PARTS ON TAPE

- NOTES:
- MATERIAL:
    - (A). TERMINAL: COPPER
    - PLATING: ELECTRO-TIN (.0003 MIN.)
    - (B). TIN-PLATED BRASS FUNNEL FERRULE
    - (C). INSULATION: NYLON (YELLOW)
  - MWID: MAXIMUM WIRE INSULATION DIAMETER
  - WIRE SIZE: 12 -10 AWG  
4.0 -6.0 MM<sup>2</sup>
  - "UL" LISTING #E32244  
"CSA" LISTING #18689
  - ALL DIMENSIONS IN INCHES/[MM].
  - PARTS ARE ROHS COMPLIANT.
  - DIMS. SHOWN ARE FOR REFERENCE ONLY.

SYMBOLS	THIS DRAWING CONTAINS INFORMATION THAT IS PROPRIETARY TO MOLEX ELECTRONIC TECHNOLOGIES, LLC AND SHOULD NOT BE USED WITHOUT WRITTEN PERMISSION										
	DIMENSION UNITS		SCALE		CURRENT REV DESC: MIGRATION TO ECTR/NX						
	INCH/MM		NTS		EC NO: 620952 DRWN: ABENJAMINLW 2019/06/27 CHK'D: GROJAS01 2019/07/19 APPR: JMACNEIL 2019/08/05 INITIAL REVISION: DRWN: GZ 1985/04/05 APPR: JMACNEIL 2019/08/05						
	GENERAL TOLERANCES (UNLESS SPECIFIED)										
▽ = 0	4 PLACES	±	---	±	---	<b>molex</b> SNAP SPADE SHORT TONGUE TERMINAL AVIKRIMP - 800 SERIES PRODUCT CUSTOMER DRAWING					
▽ = 0	3 PLACES	±	---	±	.005						
▽ = 0	2 PLACES	±	0.13	±	.01						
▽ = 0	1 PLACE	±	0.25	±	---						
⊠ = 0	0 PLACES	±	---	±	---	DOCUMENT NUMBER: 191150046 DOC TYPE: PSD DOC PART: 000 REVISION: A					
■ = 0	ANGULAR TOL ± 0.5 °		THIRD ANGLE PROJECTION		DRAWING SERIES		MATERIAL NUMBER			CUSTOMER	SHEET NUMBER
▽ = 0	DRAFT WHERE APPLICABLE MUST REMAIN WITHIN DIMENSIONS		C-SIZE		19115		SEE TABLE		GENERAL MARKET		1 OF 1