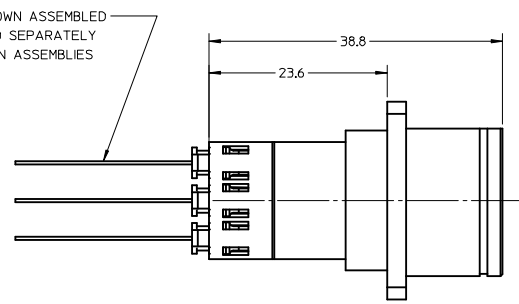
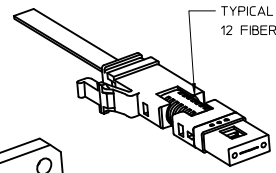


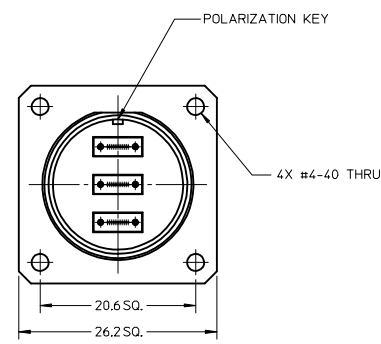
ADAPTER P/N  
1060776050



1X3 CIRC MT CLIPS SHOWN ASSEMBLED  
CLIPS ARE PURCHASED SEPARATELY  
AS TERMINATED RIBBON ASSEMBLIES

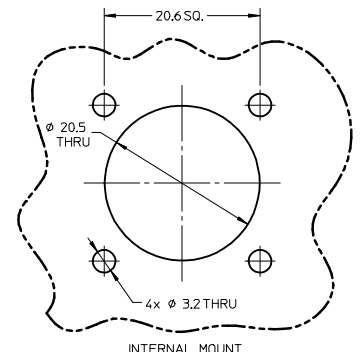


TYPICAL 1X3 MT CLIP WITH  
12 FIBER RIBBON SHOWN

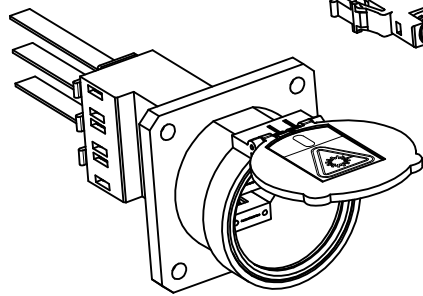


POLARIZATION KEY

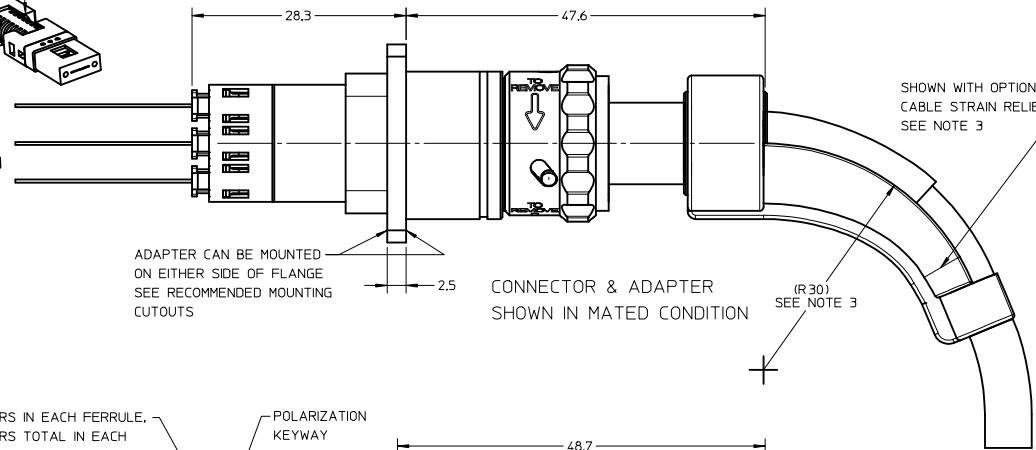
4X #4-40 THRU



INTERNAL MOUNT



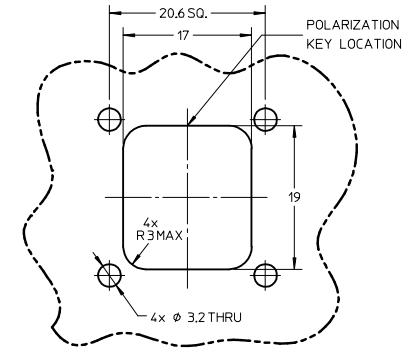
ADAPTER SHOWN WITH OPTIONAL  
DUST/LASER PROTECTION SHUTTER  
(P/N 1060776061)  
SEE NOTE 5



ADAPTER CAN BE MOUNTED  
ON EITHER SIDE OF FLANGE  
SEE RECOMMENDED MOUNTING  
CUTOUTS

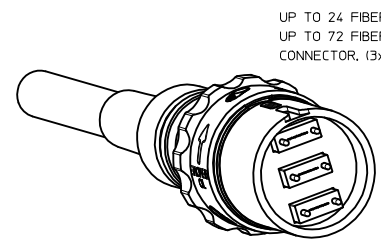
CONNECTOR & ADAPTER  
SHOWN IN MATED CONDITION

SHOWN WITH OPTIONAL  
CABLE STRAIN RELIEF  
SEE NOTE 3

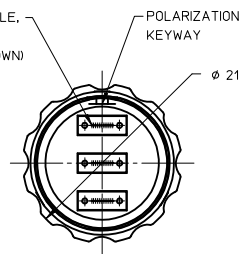


EXTERNAL MOUNT

RECOMMENDED  
MOUNTING CUTOUTS

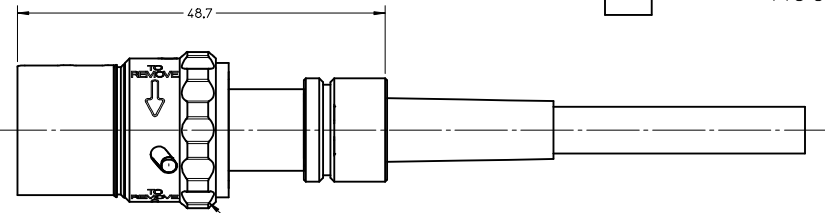


UP TO 24 FIBERS IN EACH FERRULE.  
UP TO 72 FIBERS TOTAL IN EACH  
CONNECTOR. (13X12F=36FIBERS SHOWN)



POLARIZATION KEYWAY

21



QUICK CONNECT & RELEASE COLLAR SYSTEM  
SEE NOTE 4

NOTES:

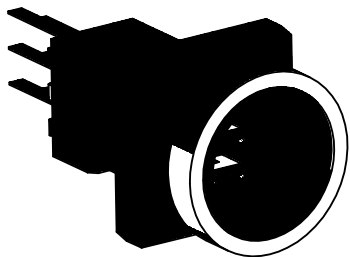
- ASSEMBLIES CAN BE MADE WITH UP TO 72 FIBERS.  
SEE DRAWINGS SD-86275-1000 & SD-86275-1001 FOR TYPICAL ASSEMBLIES.
- CABLE DIAMETER (Ø) IS DEPENDENT ON THE NUMBER OF FIBERS IN CABLE BUNDLE.  
MINIMUM Ø - 5mm.  
MAXIMUM Ø - 8.5mm.
- CABLE BEND RADIUS IS DEPENDENT ON CABLE DIAMETER(Ø), DIMENSION  
SHOWN IS FOR Ø6.35mm CABLE. SNAP ON STRAIN RELIEFS ARE AVAILABLE FOR  
SELECTED SIZES.
- TO ENGAGE CONNECTOR INTO ADAPTER: ALIGN KEYS & PUSH CONNECTOR INTO ADAPTER.  
TO DISENGAGE: TURN COLLAR IN DIRECTION SHOWN & PULL CONNECTOR OUT OF ADAPTER.
- SHUTTER SNAPS ON AND IS ALIGNED BY A FLAT FEATURE ON THE ADAPTER.  
SHUTTER IS ALSO REMOVABLE.

ENTER DESCRIPTION	QUALITY SYMBOLS
EC NO: MF2007-0731	▽=0
DRWNGSZ: LAGY1 2007/06/12	▽=0
CHKD: 2007/06/12	
APPR: SM160 2007/06/12	
REV	
1	

GENERAL TOLERANCES (UNLESS SPECIFIED)
4 PLACES ± --- INCH
3 PLACES ± --- INCH
2 PLACES ± 0.1 INCH
1 PLACE ± 0.1 INCH
ANGULAR ± 1/2°
DRAFT WHERE APPLICABLE MUST REMAIN WITHIN DIMENSIONS

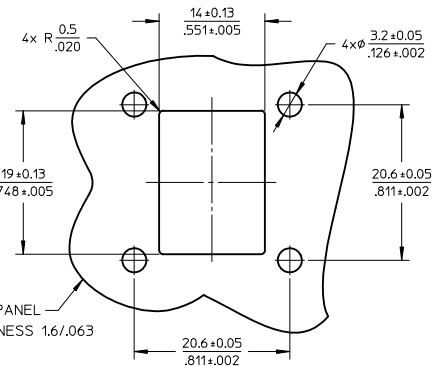
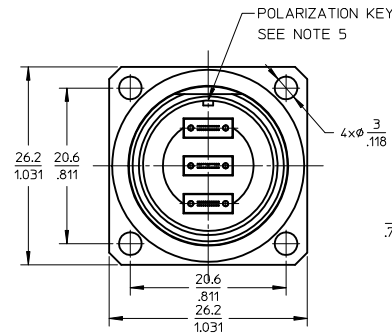
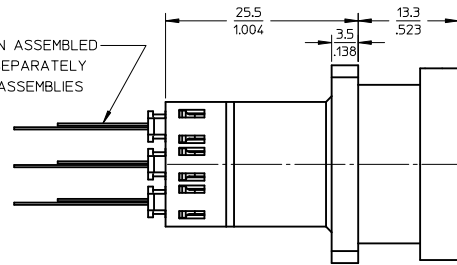
DIMENSION STYLE	SCALE	DESIGN UNITS	THIRD ANGLE PROJECTION
MM ONLY	2:1	METRIC	
DRAWN BY	DATE	TITLE	
CHECKED BY	DATE		
APPROVED BY	DATE		
MATERIAL NO.	DOCUMENT NO.	SHEET NO.	
1062750000	SD-106275-0000	1 OF 1	
THIS DRAWING CONTAINS INFORMATION THAT IS PROPRIETARY TO MOLEX INCORPORATED AND SHOULD NOT BE USED WITHOUT WRITTEN PERMISSION			

1X3 CIRCULAR MT CONNECTOR & ADAPTER SYSTEM DRAWING			
MOLEX INCORPORATED			



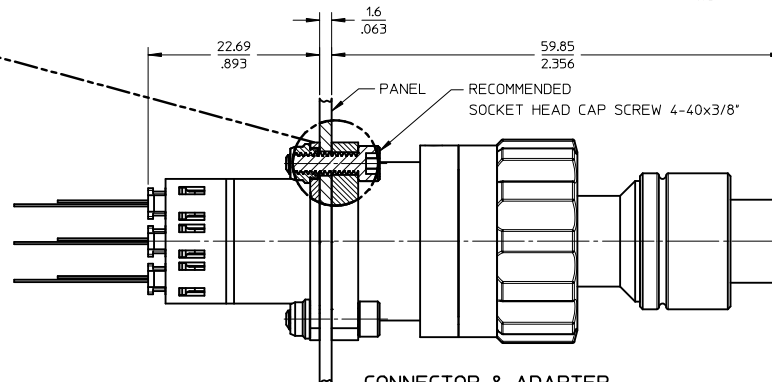
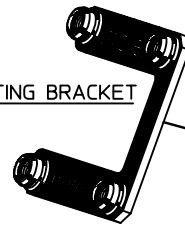
**1x3 CIRCULAR BREAK-AWAY  
ADAPTER P/N 1060776510**

1X3 CIRC MT CLIPS SHOWN ASSEMBLED  
CLIPS ARE PURCHASED SEPARATELY  
AS TERMINATED RIBBON ASSEMBLIES

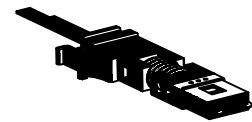


**RECOMMENDED MOUNTING PATTERN**

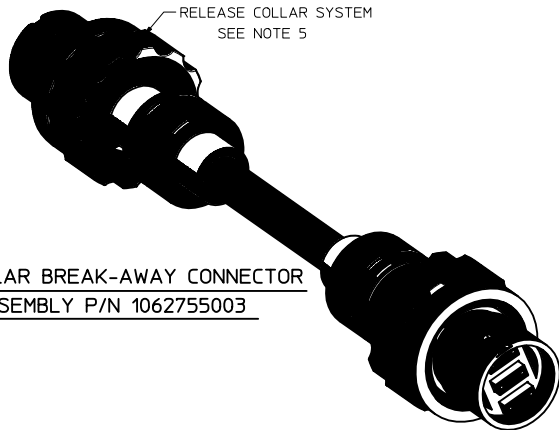
**OPTIONAL MOUNTING BRACKET  
(#4-40 THREAD)  
P/N 1060776504**



**CONNECTOR & ADAPTER  
SHOWN IN MATED CONDITION**

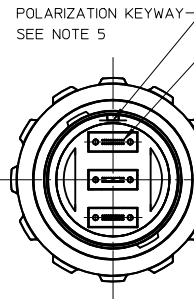


TYPICAL 1X3 MT CLIP WITH  
24 FIBER RIBBON SHOWN

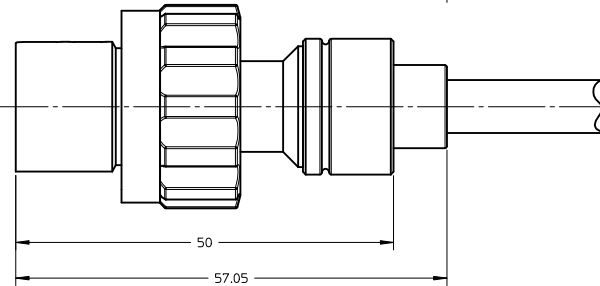


RELEASE COLLAR SYSTEM  
SEE NOTE 5

**1x3 CIRCULAR BREAK-AWAY CONNECTOR  
CABLE ASSEMBLY P/N 1062755003**



UP TO 36 FIBERS IN EACH FERRULE.  
UP TO 108 FIBERS TOTAL IN EACH  
CONNECTOR. (3x24F=72FIBERS SHOWN)

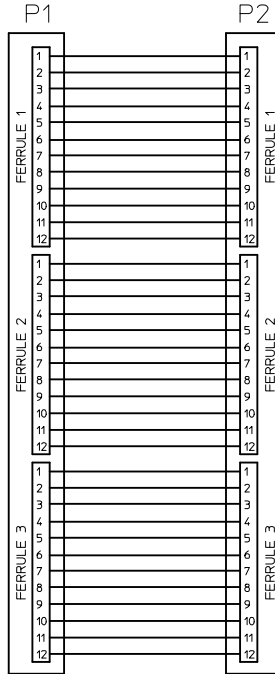
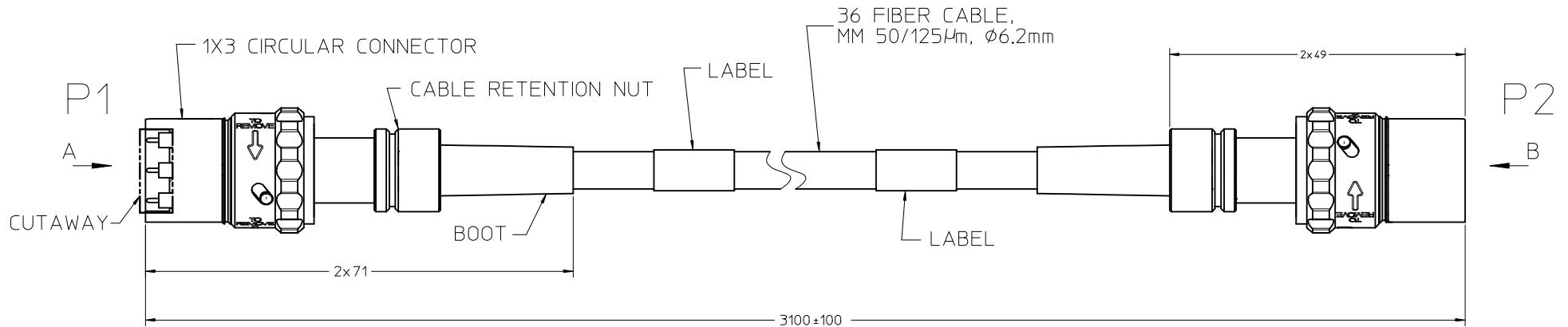


**NOTES:**

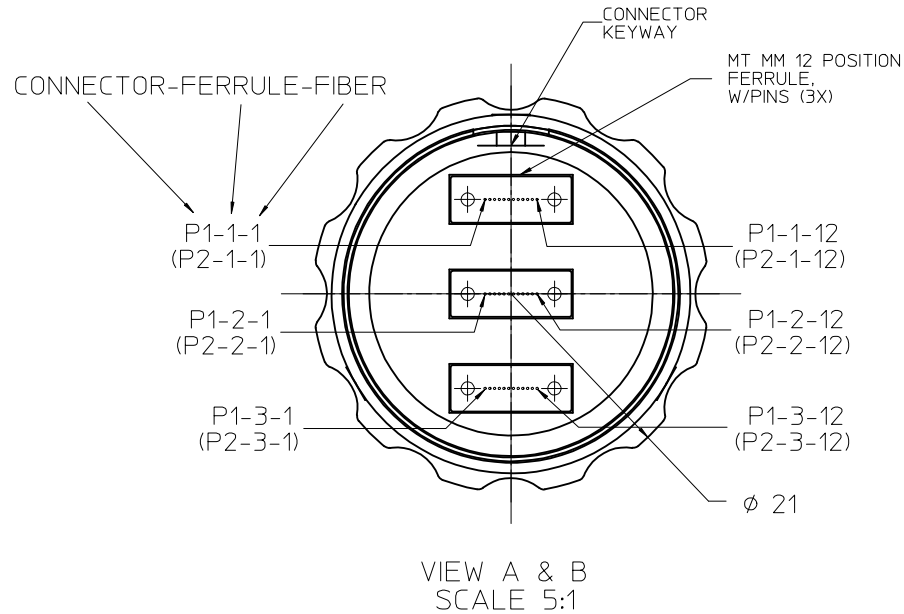
- DIMENSIONS/FEATURES ARE PROVIDED FOR REFERENCE ONLY AND MAY BE CHANGED WITHOUT NOTIFICATION.
- ASSEMBLIES CAN BE MADE WITH UP TO 108 FIBERS.  
SEE DRAWINGS: CABLE ASSEMBLY SD-106275-5003 & ADAPTER SD-106077-6510 FOR TYPICAL ASSEMBLIES.  
CONNECTOR COMPONENTS NOT AVAILABLE SEPARATELY (ONLY AS A CABLE ASSEMBLY).
- CABLE DIAMETER (φ) IS DEPENDENT ON THE NUMBER OF FIBERS IN CABLE BUNDLE.  
MINIMUM φ - 5mm.  
MAXIMUM φ - 10mm.
- CABLE BEND RADIUS IS DEPENDENT ON CABLE DIAMETER(φ). DIMENSION SHOWN IS FOR φ7mm CABLE.
- TO ENGAGE CONNECTOR INTO ADAPTER: ALIGN ADAPTER KEY WITH CONNECTOR KEYWAY & PUSH CONNECTOR INTO ADAPTER.  
TO DISENGAGE: TURN COLLAR IN DIRECTION SHOWN & PULL CONNECTOR OUT OF ADAPTER.

<b>ENTER DESCRIPTION</b> EC NO: MF2011-0362 DRAWN: BELENKIY 2011/03/09 CHKD: APPR: WCHEN 2011/05/11 REV: A	<b>QUALITY SYMBOLS</b> ▽=0 ▽=0	<b>GENERAL TOLERANCES (UNLESS SPECIFIED)</b>		<b>DIMENSION STYLE</b> MM/IN	<b>SCALE</b> 2:1	<b>DESIGN UNITS</b> INCH	THIRD ANGLE PROJECTION	
		4 PLACES ± --- ± --- 3 PLACES ± --- ± --- 2 PLACES ± --- ± --- 1 PLACE ± --- ± ---	mm INCH	DRAWN BY YBELENKIY	DATE 2011/03/09	<b>TITLE</b> 1X3 CIRCULAR BREAK-AWAY CONNECTOR & ADAPTER SYSTEM DRAWING		
		DRAFT WHERE APPLICABLE MUST REMAIN WITHIN DIMENSIONS		CHECKED BY WCHEN	DATE 2011/05/11	<b>MOLEX INCORPORATED</b>		
		MATERIAL NO.		DOCUMENT NO.		SD-106275-001		

THIS DRAWING CONTAINS INFORMATION THAT IS PROPRIETARY TO MOLEX INCORPORATED AND SHOULD NOT BE USED WITHOUT WRITTEN PERMISSION

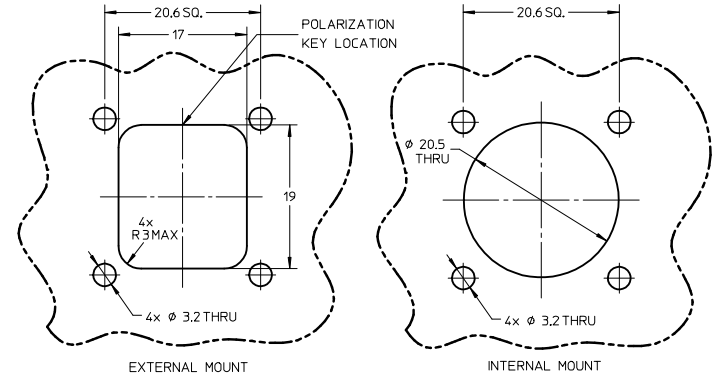
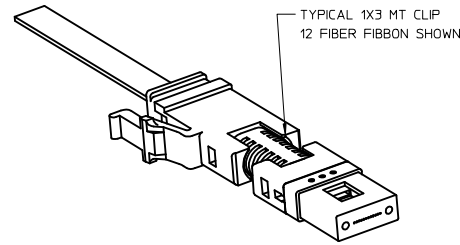
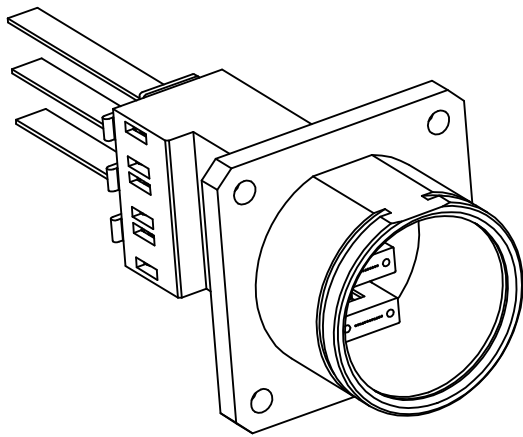


CONNECTIVITY DIAGRAM



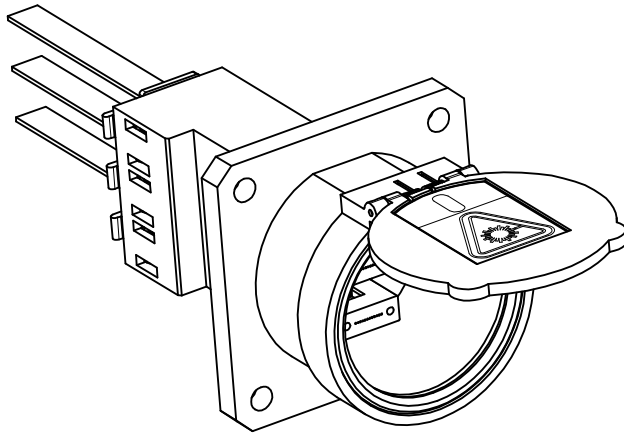
- NOTES:
1. THIS IS A TYPICAL CABLE ASSEMBLY DRAWING AND IS FOR REFERENCE ONLY. DRAWINGS ARE GENERATED TO MEET CUSTOMER'S SPECIFIC REQUIREMENTS.
  2. UNLESS SPECIFIED OTHERWISE DIMENSIONS ARE FOR REFERENCE ONLY.
  3. DUST CAPS ARE NOT SHOWN.
  4. OPTIONAL STRAIN RELIEFS SOLD SEPARATELY.
  5. COMPONENTS NOT AVAILABLE SEPARATELY. SOLD ONLY AS A CABLE ASSEMBLY.

<b>ENTER DESCRIPTION</b> EC NO: MF2007-0731 DRWNGSZ:LAGYI CHKD: APPR:SMIGO 2007/06/12 2007/06/12 2007/06/12	<b>QUALITY SYMBOLS</b> ▽=0 ▽=0	<b>GENERAL TOLERANCES (UNLESS SPECIFIED)</b>		<b>DIMENSION STYLE</b> <b>MM ONLY</b>	<b>SCALE</b> <b>4:1</b>	<b>DESIGN UNITS</b> <b>METRIC</b>	<b>THIRD ANGLE PROJECTION</b>
		4 PLACES ± --- ± --- 3 PLACES ± --- ± --- 2 PLACES ± 0.1 ± --- 1 PLACE ± 0.1 ± ---	mm      INCH	DRAWN BY      DATE	TITLE <b>CONNECTOR CABLE ASSY,          1X3 CIRCULAR MT,          (36 FIBER 50/125 MM)</b>		
		ANGULAR ±1/2°	DRAFT WHERE APPLICABLE MUST REMAIN WITHIN DIMENSIONS	CHECKED BY      DATE	<b>molex</b> <b>MOLEX INCORPORATED</b>		
		MATERIAL NO. <b>1062751000</b>	DOCUMENT NO. <b>SD-106275-1000</b>	APPROVED BY      DATE	SHEET NO. <b>1 OF 1</b>		
<b>1</b>		SIZE		THIS DRAWING CONTAINS INFORMATION THAT IS PROPRIETARY TO MOLEX INCORPORATED AND SHOULD NOT BE USED WITHOUT WRITTEN PERMISSION			

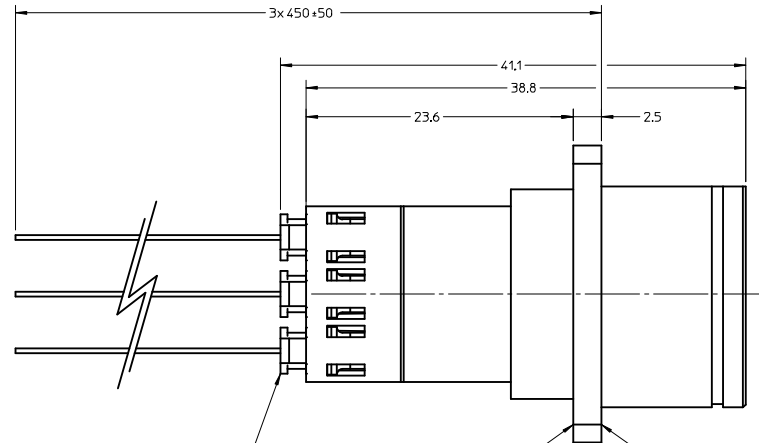


RECOMMENDED  
MOUNTING CUTOUTS

SCALE 2:1

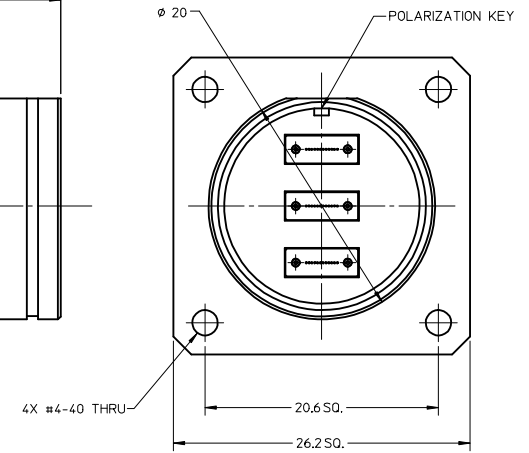


ADAPTER SHOWN WITH OPTIONAL  
DUST/LASER PROTECTION SHUTTER  
(P/N 1060776061)  
SEE NOTE 3



1X3 CIRC MT CLIPS SHOWN ASSEMBLED  
CLIPS ARE PURCHASED SEPARATELY  
AS TERMINATED RIBBON ASSEMBLIES

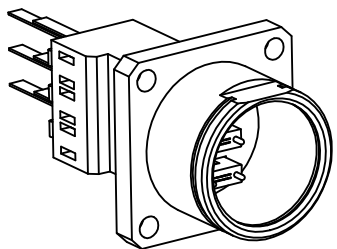
ADAPTER CAN BE MOUNTED  
ON EITHER SIDE OF FLANGE  
SEE RECOMMENDED MOUNTING  
CUTOUTS



NOTES:

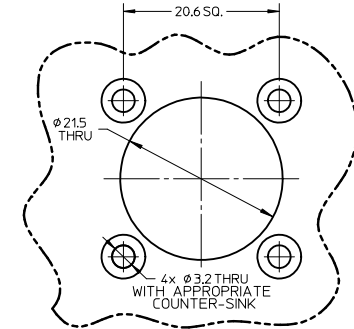
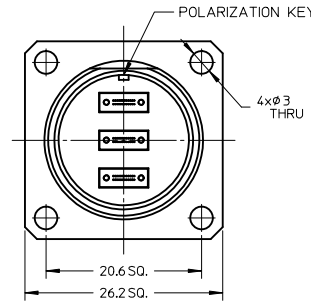
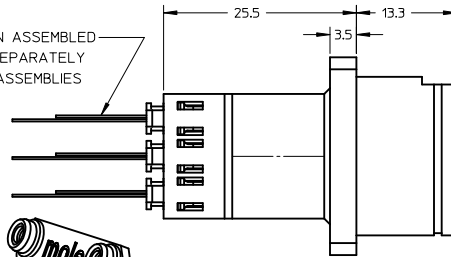
1. THIS IS A TYPICAL ADAPTER ASSEMBLY DRAWING AND IS FOR REFERENCE ONLY. DRAWINGS ARE GENERATED TO MEET CUSTOMER'S SPECIFIC REQUIREMENTS. ADAPTERS AND TERMINATED 1X3 MT CLIPS ARE SOLD INDIVIDUALLY.
2. DIMENSION ARE FOR REFERENCE ONLY.
3. OPTIONAL SHUTTER SNAPS ON AND IS ALIGNED BY A FLAT FEATURE ON THE ADAPTER. SHUTTER IS ALSO REMOVABLE. SHUTTERS ARE SOLD SEPERATELY.

ENTER DESCRIPTION EC NO: MF2007-0731 DRWNGSZ: LAGYI 2007/06/12 CHKD: 2007/06/12 APPR: SM1GO 2007/06/12	QUALITY SYMBOLS ▽=0 ▽=0	GENERAL TOLERANCES (UNLESS SPECIFIED)		DIMENSION STYLE MM ONLY		SCALE 3:1	DESIGN UNITS METRIC	THIRD ANGLE PROJECTION	
		mm	INCH	DRAWN BY	DATE	TITLE	ADAPTER, 1X3 CIRCULAR MT 50/125MM 36 FIBER REFERENCE DRAWING		
1	DESCRIPTION	4 PLACES ± --- ± ---	3 PLACES ± --- ± ---	CHECKED BY		DATE		MOLEX INCORPORATED	
		2 PLACES ± 0.1 ± ---	1 PLACE ± 0.1 ± ---	APPROVED BY		DATE		MATERIAL NO. 1062751001	
		ANGULAR ± 1/2°		MATERIAL NO. 1062751001		DOCUMENT NO. SD-106275-1001		SHEET NO. 1 OF 1	
		DRAFT WHERE APPLICABLE MUST REMAIN WITHIN DIMENSIONS		SIZE C		THIS DRAWING CONTAINS INFORMATION THAT IS PROPRIETARY TO MOLEX INCORPORATED AND SHOULD NOT BE USED WITHOUT WRITTEN PERMISSION			

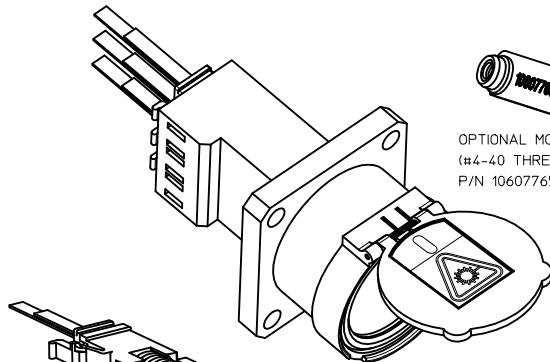


ADAPTER P/N  
1060776501

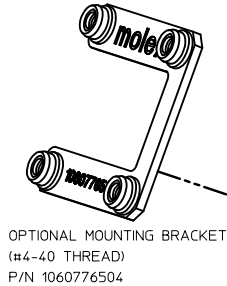
1X3 CIRC MT CLIPS SHOWN ASSEMBLED  
CLIPS ARE PURCHASED SEPARATELY  
AS TERMINATED RIBBON ASSEMBLIES



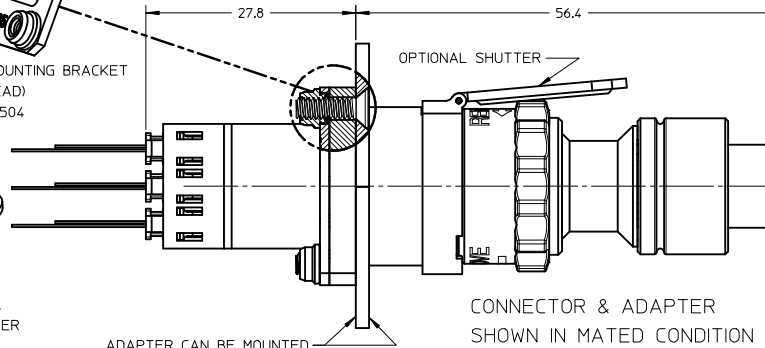
RECOMMENDED INTERNAL  
MOUNTING CUTOUT



ADAPTER SHOWN WITH OPTIONAL  
DUST/LASER PROTECTION SHUTTER  
P/N 1060776503



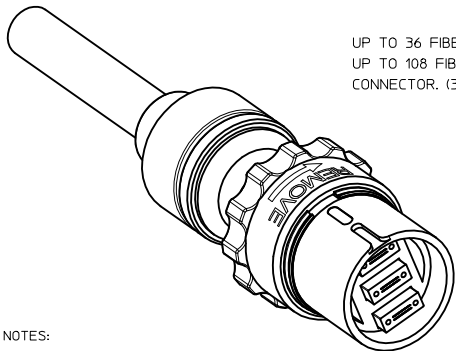
OPTIONAL MOUNTING BRACKET  
(#4-40 THREAD)  
P/N 1060776504



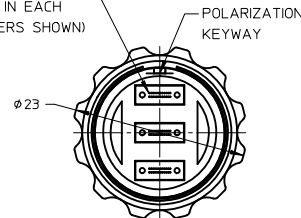
CONNECTOR & ADAPTER  
SHOWN IN MATED CONDITION

ADAPTER CAN BE MOUNTED  
ON EITHER SIDE OF FLANGE  
INTERNAL MOUNTING RECOMMENDED  
SEE CUTOUT DETAIL

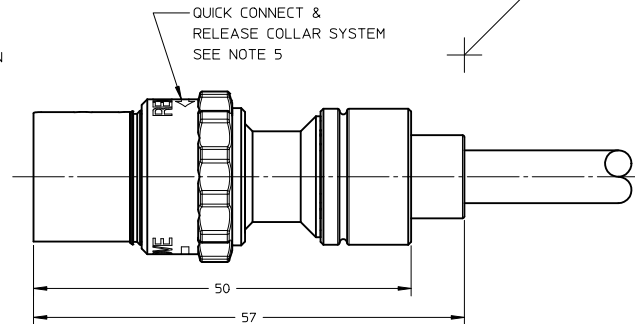
TYPICAL 1X3 MT CLIP WITH  
24 FIBER RIBBON SHOWN



UP TO 36 FIBERS IN EACH FERRULE.  
UP TO 108 FIBERS TOTAL IN EACH  
CONNECTOR. (3x24F=72FIBERS SHOWN)



QUICK CONNECT &  
RELEASE COLLAR SYSTEM  
SEE NOTE 5

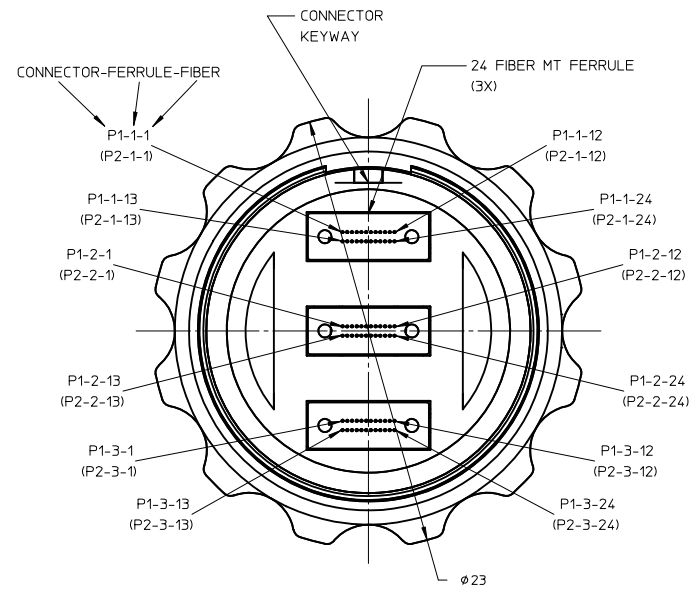
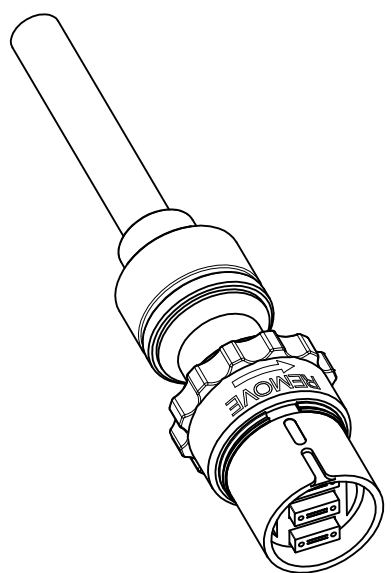
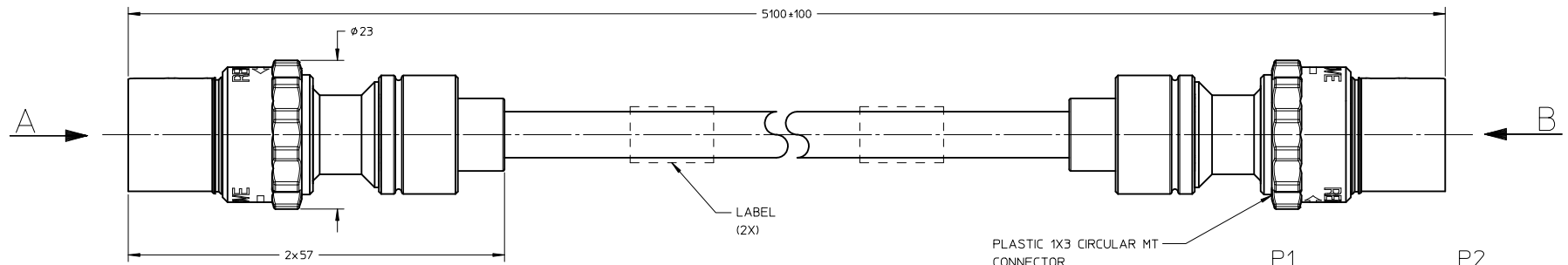


(R38.1)  
SEE NOTE 4

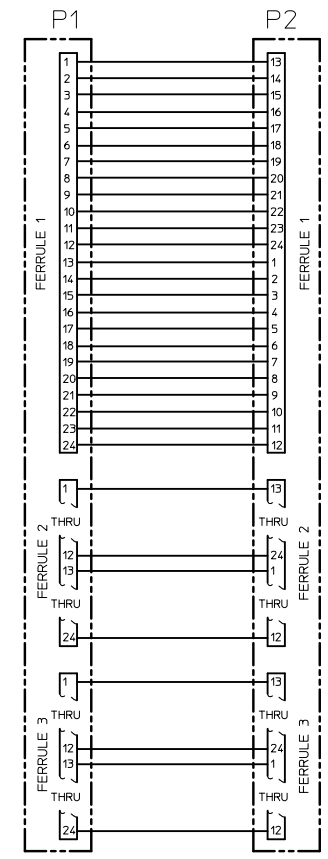
NOTES:

- DIMENSIONS/FEATURES ARE PROVIDED FOR REFERENCE ONLY AND MAY BE CHANGED WITHOUT NOTIFICATION.
- ASSEMBLIES CAN BE MADE WITH UP TO 108 FIBERS.  
SEE DRAWINGS SD-106275-5001 & SD-106275-5002 FOR TYPICAL ASSEMBLIES.
- CABLE DIAMETER (Ø) IS DEPENDENT ON THE NUMBER OF FIBERS IN CABLE BUNDLE.  
MINIMUM Ø - 5mm.  
MAXIMUM Ø - 10mm.
- CABLE BEND RADIUS IS DEPENDENT ON CABLE DIAMETER(Ø). DIMENSION SHOWN IS FOR Ø7mm CABLE.
- TO ENGAGE CONNECTOR INTO ADAPTER: ALIGN KEYS & PUSH CONNECTOR INTO ADAPTER.  
TO DISENGAGE: TURN COLLAR IN DIRECTION SHOWN & PULL CONNECTOR OUT OF ADAPTER.
- SHUTTER SNAPS ON AND IS ALIGNED BY A FLAT FEATURE ON THE ADAPTER.  
SHUTTER IS ALSO REMOVABLE.

<b>ENTER DESCRIPTION</b> EC NO: MF2011-0018 DRWNGSZ: LAGY1 2010/07/06 CHKD: 2010/07/19 APPR: SM1G0 2010/07/21	<b>QUALITY SYMBOLS</b> ▽=0 ▽=0	<b>GENERAL TOLERANCES (UNLESS SPECIFIED)</b>		<b>DIMENSION STYLE</b> <b>MM ONLY</b>	<b>SCALE</b> <b>2:1</b>	<b>DESIGN UNITS</b> <b>METRIC</b>	<b>THIRD ANGLE PROJECTION</b>
		4 PLACES ± --- ± --- 3 PLACES ± --- ± --- 2 PLACES ± 0.1 ± --- 1 PLACE ± 0.1 ± --- ANGULAR ± 1/2°	mm INCH ± --- ± --- ± 0.1 ± --- ± 0.1 ± ---	DRAWN BY DATE DSZILAGY1 2010/07/06 CHECKED BY DATE	TITLE <b>PLASTIC 1X3 CIRCULAR MT CONNECTOR &amp; ADAPTER SYSTEM DRAWING</b>		
1	REV	DRAFT WHERE APPLICABLE MUST REMAIN WITHIN DIMENSIONS	APPROVED BY DATE SM1G0 2010/07/19	MATERIAL NO. <b>1062755000</b>	DOCUMENT NO. <b>SD-106275-5000</b>	SHEET NO. <b>1 OF 1</b>	<b>Molex</b> <b>MOLEX INCORPORATED</b>
THIS DRAWING CONTAINS INFORMATION THAT IS PROPRIETARY TO MOLEX INCORPORATED AND SHOULD NOT BE USED WITHOUT WRITTEN PERMISSION							



VIEW A & B  
SCALE 5:1



CONNECTIVITY DIAGRAM

- NOTES:
- THIS IS A TYPICAL CABLE ASSEMBLY DRAWING AND IS FOR REFERENCE ONLY. DRAWINGS ARE GENERATED TO MEET CUSTOMER'S SPECIFIC REQUIREMENTS.
  - UNLESS SPECIFIED OTHERWISE DIMENSIONS ARE FOR REFERENCE ONLY.
  - DUST CAPS ARE NOT SHOWN.
  - COMPONENTS NOT AVAILABLE SEPARATELY. SOLD ONLY AS A CABLE ASSEMBLY.

ENTER DESCRIPTION EC NO: MF2012-0115 DRWNG/REVZNER 2011/08/30 CHKD: APPR:WCHEN REV A	QUALITY SYMBOLS ▽=0 ▽=0	GENERAL TOLERANCES (UNLESS SPECIFIED)		DIMENSION STYLE <b>MM ONLY</b>		SCALE <b>2:1</b>	DESIGN UNITS <b>METRIC</b>	THIRD ANGLE PROJECTION		
		mm	INCH	DRAWN BY DSZILAGYI	DATE 2010/07/09	TITLE <b>PLASTIC CONN CABLE ASSY,          1X3 CIRCULAR MT,          REFERENCE DRAWING</b>				
		4 PLACES ± --- ± ---		CHECKED BY						
		3 PLACES ± --- ± ---		APPROVED BY SMIGO		DATE 2010/07/19	MATERIAL NO. <b>1062755002</b>			
2 PLACES ± 0.1 ± ---		DOCUMENT NO. <b>SD-106275-5002</b>		SHEET NO. 1 OF 1						
1 PLACE ± 0.1 ± ---		DRAFT WHERE APPLICABLE MUST REMAIN WITHIN DIMENSIONS		THIS DRAWING CONTAINS INFORMATION THAT IS PROPRIETARY TO MOLEX INCORPORATED AND SHOULD NOT BE USED WITHOUT WRITTEN PERMISSION						
ANGULAR ± 1/2°										