



AUDIO
TECHNOLOGIES®

SPEAKERLATCH™ CHASSIS CONNECTOR

Specialized connector to drive passive
speakers (Speaker Level Signal)



IO-SL4MP

SPECIFICATIONS

PRODUCT

Gender: **Male**

Contacts: **4**

ELECTRICAL

Capacitance between Contacts: **≤ 2.5 pF**

Contact Resistance: **≤ 3 mΩ**

Insulation Resistance: **> 1 GΩ**

Dielectric Strength: **4 kV DC**

Current Rating: **16 A RMS / 250 V AC**

ENVIRONMENTAL

Flame-retardant Grade: **UL94 V-0**

Standard Compliance: **IEC 61984**

Working Temperature: **-30°C to +80°C**

UL Listed (US): **E500108**

MECHANICAL

Lifetime: **> 1000 Mating Cycles**

Locking Device: **Quick Lock**

Mounting Direction: **Front Mounting**

Chassis Shape: **J Size**

Wiring: **Flat Tab Terminals**

Solderability: **Complies with IEC 60068-2-20**

MATERIAL

Contacts: **Copper Alloy**

Contact Plating: **Silver**

Shell: **Reinforced Plastic (PA66+30%GF)**

Shell Finish: **Black**

Locking Element: **Brass**

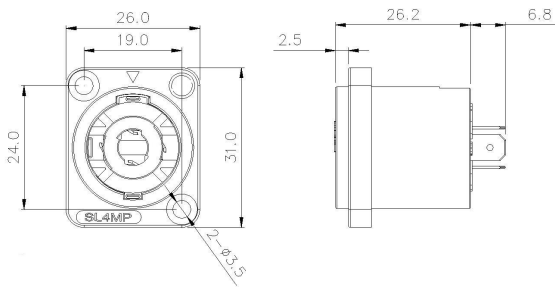
Locking Element Finish: **Nickel**

Product specifications may change without prior notification

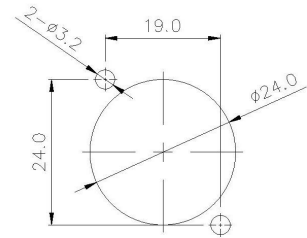


DRAWINGS

IO-SL4MP



Panel Cutout



FEATURES & APPLICATIONS

Speakerlatch™ chassis connectors provide the safest connection for driving passive speakers. They feature a reinforced plastic shell with 4 silver plated contacts designed to withstand the abuse of stage productions. The “twist-to-lock” motion makes each connection extremely robust and prevents accidental disconnection while protecting the user at all times from unintentional shocks and conductor damage. Additionally, these connectors are specifically keyed to prevent dangerous interconnection mistakes. All of this protection fits in a standard "J" size footprint to simplify installation.

With a current rating of 16A @ 250V AC, Speakerlatch™ chassis connectors are a perfect solution for applications where a high capacity connection is needed and safety must be maintained at all times. The sturdy, locking plastic connectors offer durability that will ensure years of reliable service without interruption or fatigue, even in harsh environments. The ability to install or remove them in the field means that installers and integrators can customize their use and get the job done. Speakerlatch™ connectors are compatible with current industry standard speaker receptacles with flat tab terminals, making it a safe investment.

PART NUMBER BREAKDOWN:

IO-SL4MP
Series Identifier
IO-SL4MP
Number of Contacts
IO-SL4MP
Gender
IO-SL4MP
Panel Mount

STANDARDS & CLASSIFICATIONS



Product specifications may change without prior notification