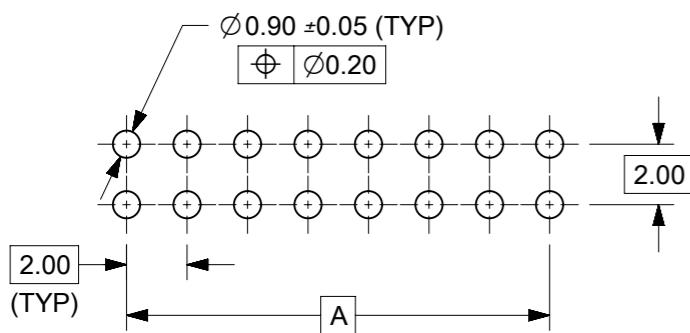
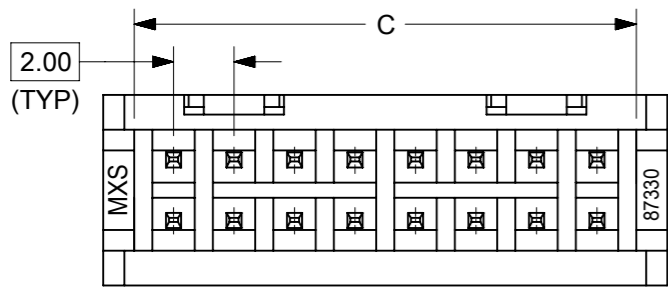
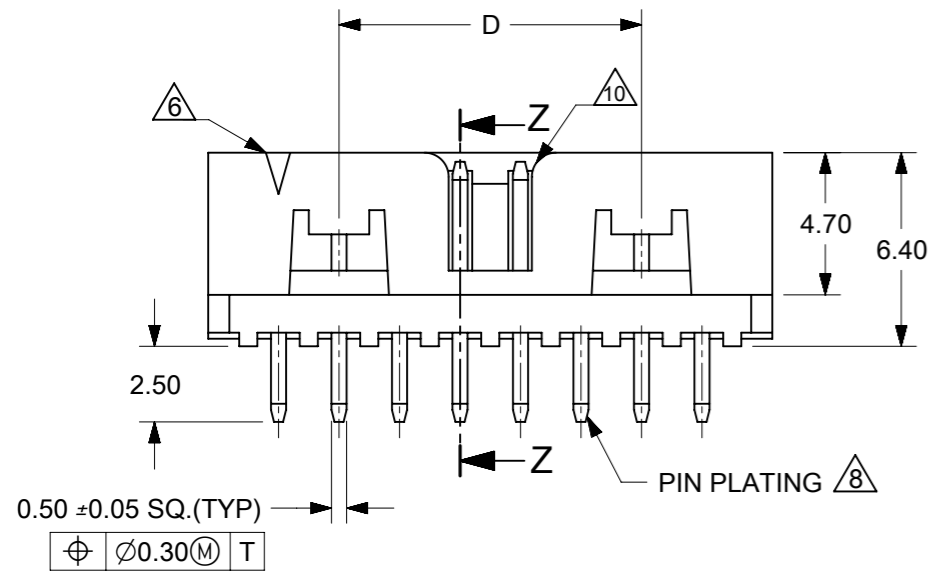


REF : ORIENTATION OF PART IN TUBE
(FOR THE REFERENCE OF PART/TUBE ASSEMBLY)



RECOMMENDED PCB PATTERN

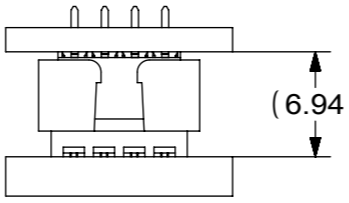
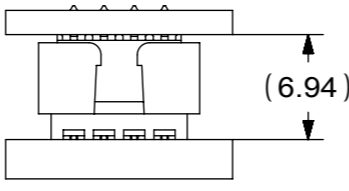
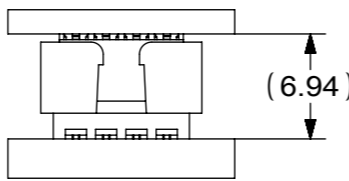
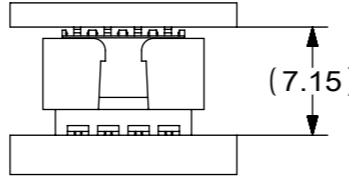
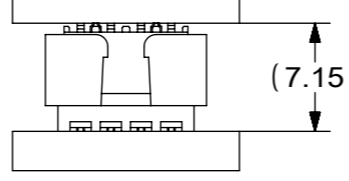
| P/N IN TUBE | CKT SIZE | DIMENSION | | | |
|-------------|----------|-----------|-------|-------|-------|
| | | A | B | C | D |
| 87831-0431 | 04 | 2.00 | 6.65 | 4.60 | - |
| 87831-0631 | 06 | 4.00 | 8.65 | 6.60 | - |
| 87831-0831 | 08 | 6.00 | 10.65 | 8.60 | - |
| 87831-1031 | 10 | 8.00 | 12.65 | 10.60 | - |
| 87831-1231 | 12 | 10.00 | 14.65 | 12.60 | - |
| 87831-1431 | 14 | 12.00 | 16.65 | 14.60 | 8.00 |
| 87831-1631 | 16 | 14.00 | 18.65 | 16.60 | 10.00 |
| 87831-1831 | 18 | 16.00 | 20.65 | 18.60 | 12.00 |
| 87831-2031 | 20 | 18.00 | 22.65 | 20.60 | 14.00 |
| 87831-2231 | 22 | 20.00 | 24.65 | 22.60 | 16.00 |
| 87831-2431 | 24 | 22.00 | 26.65 | 24.60 | 18.00 |
| 87831-2631 | 26 | 24.00 | 28.65 | 26.60 | 20.00 |
| 87831-2831 | 28 | 26.00 | 30.65 | 28.60 | 22.00 |
| 87831-3031 | 30 | 28.00 | 32.65 | 30.60 | 24.00 |
| 87831-3231 | 32 | 30.00 | 34.65 | 32.60 | 26.00 |
| 87831-3431 | 34 | 32.00 | 36.65 | 34.60 | 28.00 |
| 87831-3631 | 36 | 34.00 | 38.65 | 36.60 | 30.00 |
| 87831-3831 | 38 | 36.00 | 40.65 | 38.60 | 32.00 |
| 87831-4031 | 40 | 38.00 | 42.65 | 40.60 | 34.00 |
| 87831-4231 | 42 | 40.00 | 44.65 | 42.60 | 36.00 |
| 87831-4431 | 44 | 42.00 | 46.65 | 44.60 | 38.00 |
| 87831-4631 | 46 | 44.00 | 48.65 | 46.60 | 40.00 |
| 87831-4831 | 48 | 46.00 | 50.65 | 48.60 | 42.00 |
| 87831-5031 | 50 | 48.00 | 52.65 | 50.60 | 44.00 |

- NOTES:
- FOR ILLUSTRATION PURPOSES, 16 CIRCUIT SIZE WAFER IS SHOWN.
 - MATERIAL : HOUSING : 30% G.F., NYLON 46, UL94V-0, COLOR BLACK.
PIN : 0.50mm SQ.PHOSPHOR BRONZE.
 - PIN PUSHOUT FORCE : 0.91 kg MIN. IN EITHER DIRECTION.
 - PRODUCT SPECIFICATION PS-87831-027 APPLIES.
 - NO SIDE LOCKING SLOT FROM 4 TO 12 CKT SIZE.
 - CKT 4 & 6 HAS NO IDENTIFICATION TAG.
 - RIBS LOCATION VARIES DEPENDING ON CKT SIZES.
 - PLATING : 0.38µm/15µin GOLD IN CONTACT AREA AND 1.88µm/75µin MIN.TIN IN SOLDER TAIL AREA OVER 1.27µm/50µin MIN. NICKEL OVERALL.
 - THIS HEADER MATES WITH MOLEX :
 - CRIMP RECEPTACLE HOUSING, 51110 SERIES WITH CRIMP TERMINAL, 50394 SERIES.
 - 2mm MILLIGRID DUAL ROW IDT, 87568 SERIES.
 - NO CENTRE POLARIZATION SLOT FOR CKT SIZE 4 & 6.
 - PARTS TO BE PACKED IN TUBE WITH MOISUTRE BARRIER BAG.

| | | | | | |
|---|-------|-----------------------------------|---------|--------------------------|-----------------|
| THIS DRAWING CONTAINS INFORMATION THAT IS PROPRIETARY TO MOLEX ELECTRONIC TECHNOLOGIES, LLC AND SHOULD NOT BE USED WITHOUT WRITTEN PERMISSION | | CURRENT REV DESC: ADDED BTB DIST. | | molex | |
| DIMENSION UNITS | SCALE | EC NO: 619055 | | | |
| mm | NTS | DRWN: HK02 2019/05/21 | | PRODUCT CUSTOMER DRAWING | |
| GENERAL TOLERANCES (UNLESS SPECIFIED) | | CHK'D: NMANE02 2019/07/09 | | DOCUMENT NUMBER | |
| 4 PLACES | ± | APPR: MRAMAKRISHNA 2019/07/09 | | SD-87831-014 | |
| 3 PLACES | ± | INITIAL REVISION: | | DOC TYPE | |
| 2 PLACES | ± 0.2 | DRWN: ATSEE 2003/10/06 | | DOC PART | |
| 1 PLACE | ± | APPR: SKTOH 2003/11/07 | | REVISION | |
| 0 PLACES | ± | ANGULAR TOL ± 3.0° | | A7 | |
| DRAFT WHERE APPLICABLE MUST REMAIN WITHIN DIMENSIONS | | THIRD ANGLE PROJECTION | DRAWING | SERIES | MATERIAL NUMBER |
| | | | A3-SIZE | 87831 | SEE TABLE |
| | | | | | CUSTOMER |
| | | | | | GENERAL MARKET |
| | | | | | SHEET NUMBER |
| | | | | | 1 OF 2 |

REV A6 ORIGINALLY RELEASED BY ECM 170249

BOARD TO BOARD (BTB) DISTANCE

| HEADER | MATES WITH (RECEPTACLE) | BTB DIST. | PICTORIAL VIEW |
|--------|-------------------------|-----------|---|
| 87831 | 79107 | 6.94 |  |
| | 78787 | 6.94 |  |
| | 79108 | 6.94 |  |
| | 79109 | 7.15 |  |
| | 78788 | 7.15 |  |

| | | | | | | | | | | | | |
|---|--|-------|--|--|--|------------|--|--|--|-----------------|----------|--------------|
| THIS DRAWING CONTAINS INFORMATION THAT IS PROPRIETARY TO MOLEX ELECTRONIC TECHNOLOGIES, LLC AND SHOULD NOT BE USED WITHOUT WRITTEN PERMISSION | | | | | | | | | | | | |
| DIMENSION UNITS | | SCALE | | CURRENT REV DESC: ADDED BTB DIST. | | | | | | molex | | |
| mm | | NTS | | | | | | | | | | |
| GENERAL TOLERANCES (UNLESS SPECIFIED) | | | | EC NO: 619055 | | 2019/05/21 | | MGRID, SHROUDED HEADER VERTICAL W/OPEN END WALL | | | | |
| | | | | DRWN: HK02 | | 2019/07/09 | | | | | | |
| | | | | CHK'D: NMANE02 | | 2019/07/09 | | PRODUCT CUSTOMER DRAWING | | | | |
| | | | | APPR: MRAMAKRISHNA | | 2019/07/09 | | | | | | |
| | | | | INITIAL REVISION: | | | | DOCUMENT NUMBER | | DOC TYPE | DOC PART | REVISION |
| 4 PLACES ± | | | | DRWN: DRWN BY | | XXXX/XX/XX | | SD-87831-014 | | PSD | 001 | A7 |
| 3 PLACES ± | | | | APPR: APPR BY | | XXXX/XX/XX | | | | | | |
| 2 PLACES ± 0.2 | | | | THIRD ANGLE PROJECTION | | DRAWING | | SERIES | | MATERIAL NUMBER | | CUSTOMER |
| 1 PLACE ± | | | | DRAFT WHERE APPLICABLE MUST REMAIN WITHIN DIMENSIONS | | A3-SIZE | | 87831 | | GENERAL MARKET | | SHEET NUMBER |
| 0 PLACES ± | | | | | | | | | | | | 2 OF 2 |
| ANGULAR TOL ± 3.0° | | | | | | | | | | | | |