

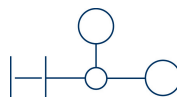
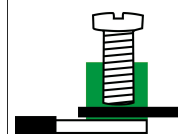
1215.5

NT 6-10 | 10x3 BU



**M4**

ERC



Neutral-disconnect terminal, Screw connection, Mounting type: Mounting rail TS 35/7.5 and TS 32, Rated cross-section: 10 mm<sup>2</sup>, Width: 6 mm, Colour: Blue

## Business data

Packaging unit	50
Quantity unit	PC
Weight per piece (not including packaging)	16.8 g
Weight per piece (including packaging)	18.04 g
Unit of weight	G
Customs number	85369010
Country of origin	CZ
Product description	Neutral disconnect terminal

1215.5

NT 6-10 | 10x3 BU

---

## Technical data

---

### Dimensions

---

Length	48 mm
Width	6 mm
Height TS 35/7.5	47 mm
Height TS 32	51.5 mm

---

### Ratings

---

Rated voltage	400 V
Rated current	57 A
Rated cross-section	10 mm <sup>2</sup>
Rated impulse voltage	4 kV
Overvoltage category	III
Contamination degree	3
Maximum power dissipation for nominal condition	1.82 W

---

### Technical data

#### Connection data

Connection principle	Screw connection
Connection position	Lateral
Connections	1
Special connection	Busbar 10 x 3 mm
Number of terminals per level	1
Number of levels	1
Wire cross-section single-core (rigid) / stranded, min.	0.2 mm <sup>2</sup>
Wire cross-section single core (rigid)/stranded, max.	10 mm <sup>2</sup>
Wire cross-section stranded, min.	0.2 mm <sup>2</sup>
Wire cross-section stranded, max.	10 mm <sup>2</sup>
Wire cross-section stranded with wire-end ferrules, min.	0.2 mm <sup>2</sup>
Wire cross-section stranded with wire-end ferrules, max.	10 mm <sup>2</sup>
Wire cross-section AWG, min.	22
Wire cross-section AWG, max.	10
Stripping length	12 mm
Screw head	Slotted
Screw threading	M 4
Tightening torque, min.	1.2 Nm
Tightening torque, max.	2 Nm

#### Materials

Insulation housing	Polyamide 6.6
Flammability class UL 94	V-2
Working temperature, min.	-40 °C
Working temperature, max.	105 °C

#### Further technical data

Mounting type	Mounting rail TS 35/7.5 and TS 32
Gauge plug acc. to EN 60 947-1	A5
End plate required	✓
Version of lengthwise partition	Sliding

# Data sheet



1215.5

NT 6-10 | 10x3 BU

---

## Technical data

---

### Print

---

Colour	Blue
--------	------

---

### Environmental Product Compliance

---

REACH Conform	yes
---------------	-----

---

REACH Reference date	2022-01-17
----------------------	------------

---

REACH Candidate Substance Note	No
--------------------------------	----

---

RoHS Conform	yes
--------------	-----

---

### Approvals

#### Standards and regulations

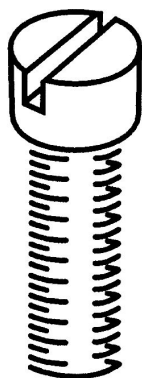
EAC approval	TR ZU 004/2011
EAC approval granted	yes

#### KEMA KEUR approval

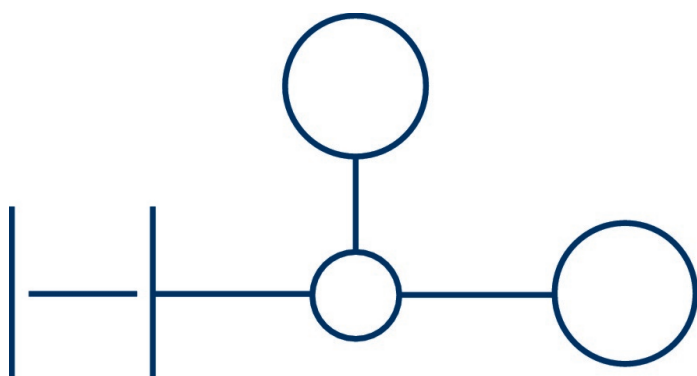
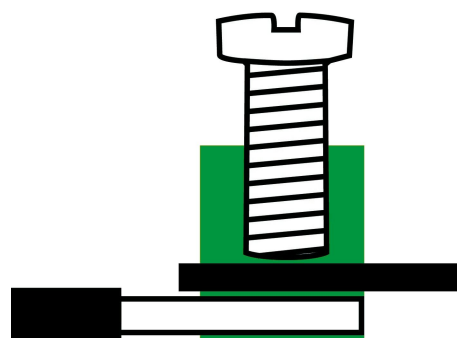
KEMA KEUR approval	EN 60947-7-1:2009
KEMA KEUR approval granted	yes
KEMA rated voltage	400 V
KEMA rated current	57 A
KEMA rated impulse voltage	4 kV
KEMA wire cross-section single core (rigid), min.	0.2 mm <sup>2</sup>
KEMA wire cross-section single-core (rigid), max.	10 mm <sup>2</sup>
KEMA wire cross-section stranded, min.	0.2 mm <sup>2</sup>
KEMA wire cross-section stranded, max.	10 mm <sup>2</sup>
KEMA torque, min.	1.2 Nm
KEMA torque, max.	2 Nm
KEMA torque busbar, min.	0.5 Nm
KEMA torque busbar, max.	1 Nm

#### Media

**M4**



**EAC**

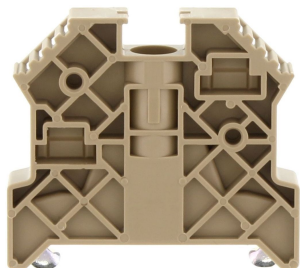


1215.5

NT 6-10 | 10x3 BU

## Accessories

### End stop



End stop, Mounting type: Mounting rail TS 35/7.5, Width: 9.5 mm, Colour: Beige

#### General order data

Product number:	Article name	GTIN (EAN)	Packaging unit
2828.0	ES 35/K/ST BG	4044211055547	50

### Fixing plate

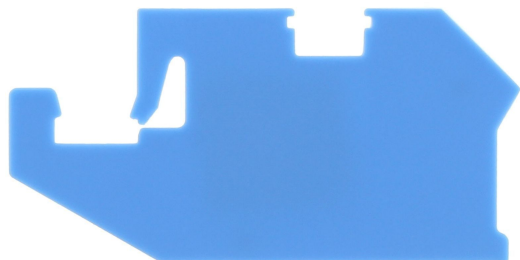


Plate for busbar, Colour: Blue

#### General order data

Product number:	Article name	GTIN (EAN)	Packaging unit
2576.5	HP 10x3 BU	4044211053703	20 ST

1215.5

NT 6-10 | 10x3 BU

---

## Accessories

---

### Test plug

---



Test plug, Colour: Red

---

### General order data

Product number:	Article name	GTIN (EAN)	Packaging unit
2007.0	PS 2,3	4044211048105	20 ST

---



1215.5

NT 6-10 | 10x3 BU

---

## Accessories

---

### Neutral busbar

---



Busbar, Material: Brass, Colour: natural

---

#### General order data

Product number:	Article name	GTIN (EAN)	Packaging unit
2128.0	Ssch 10x3 MS	4044211049478	1 M

---



Busbar, Material: Copper, Colour: natural

---

#### General order data

Product number:	Article name	GTIN (EAN)	Packaging unit
2129.0	Ssch 10x3 CU	4044211049485	1 M

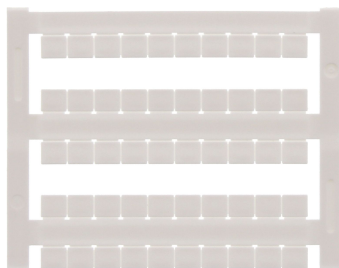
---

1215.5

NT 6-10 | 10x3 BU

## Accessories

### Quick marking



Terminal marker / Pocket Maxicard, Length: 5 mm, Width: 6 mm, Colour: White

#### General order data

Product number:	Article name	GTIN (EAN)	Packaging unit
4702.7	PMC SB 6/50 WH	4044211089986	500 ST

### Screwdriver



Screwdriver with bare blade, Colour: Black-grey

#### General order data

Product number:	Article name	GTIN (EAN)	Packaging unit
1087.0	SDB 0,8x4,0	4044211014803	1 ST