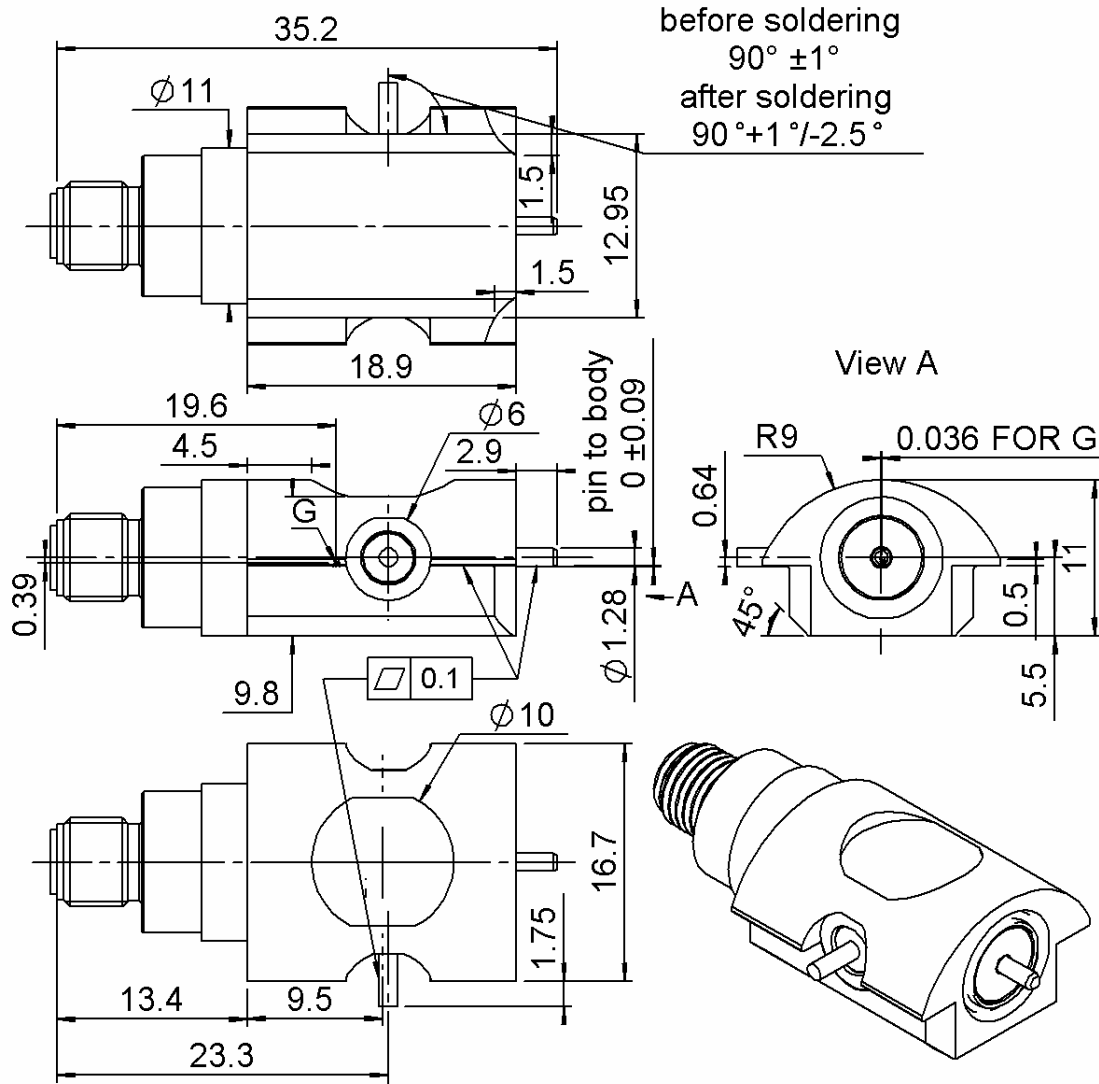


SMA SWITCH EDGE CARD SMT RIGHT TYPE

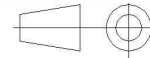
R124.422.001

PACKAGING IN REEL 110

Series : **SMA-COM**



All dimensions are in mm.



| COMPONENTS | MATERIALS | PLATING (µm) |
|----------------|-----------------|--------------|
| BODY | BRASS | NPGR, BBR 2 |
| CENTER CONTACT | BERYLIUM COPPER | NPGR |
| OUTER CONTACT | BRASS | BBR 2 |
| INSULATOR | PEEK | |
| GASKET | | |
| OTHERS PARTS | BRASS | NPGR |
| - | - | - |
| - | - | - |

Issue : 1030 A

In the effort to improve our products, we reserve the right to make changes judged to be necessary.



SMA SWITCH EDGE CARD SMT RIGHT TYPE

R124.422.001

PACKAGING IN REEL 110

Series : **SMA-COM**

PACKAGING

| Standard | Unit | Other |
|------------|-------------------|-------------------|
| 110 | 'W' option | Contact us |

SPECIFICATION

ELECTRICAL CHARACTERISTICS

| | |
|---------------------------------|-----------------------------------|
| Impedance | 50 Ω |
| Frequency | DC-3 GHz |
| VSWR | 1.1 + 0.1000 x F(GHz) Maxi |
| Isolation at DC to 1 GHz | -47 dB Typical |
| Isolation at 1 to 2 GHz | -43 dB Typical |
| Isolation at 2 to 3 GHz | -40 dB Typical |
| Insertion loss at DC to 1 GHz | 0.1 dB Maxi |
| Insertion loss at 1 to 2 GHz | 0.15 dB Maxi |
| Insertion loss at 2 to 3 GHz | 0.2 dB Maxi |
| RF leakage | - (NA - F(GHz)) dB Maxi |
| Voltage rating | 300 Veff Maxi |
| Dielectric withstanding voltage | 500 Veff mini |
| Insulation resistance | 5000 MΩ mini |
| Power withstanding | 80 W at 0.9 GHz |
| | 50 W at 1.8 GHz |

ENVIRONMENTAL

| | |
|-----------------------|---------------------|
| Operating temperature | -40/+85 ° C |
| Hermetic seal | NA Atm.cm3/s |
| Panel leakage | NA |

OTHER CHARACTERISTICS

Assembly instruction **NA**

Others :
Action Mating force
20N MAX
15N min

(1)Do not apply force on the center contact before mounting the switch on PCB

MECHANICAL CHARACTERISTICS

| | |
|----------------------------|------------------------|
| Center contact retention | |
| Axial force – Mating end | NA N mini |
| Axial force – Opposite end | NA N mini |
| Torque | NA N.cm mini |
| Axial force side pin | (1) |
| Recommended torque | |
| Mating | NA N.cm |
| Panel nut | NA N.cm |
| Mating life | 100 Cycles mini |
| Weight | 22.0700 g |

Issue : 1030 A

In the effort to improve our products, we reserve the right to make changes judged to be necessary.



SMA SWITCH EDGE CARD SMT RIGHT TYPE

R124.422.001

PACKAGING IN REEL 110

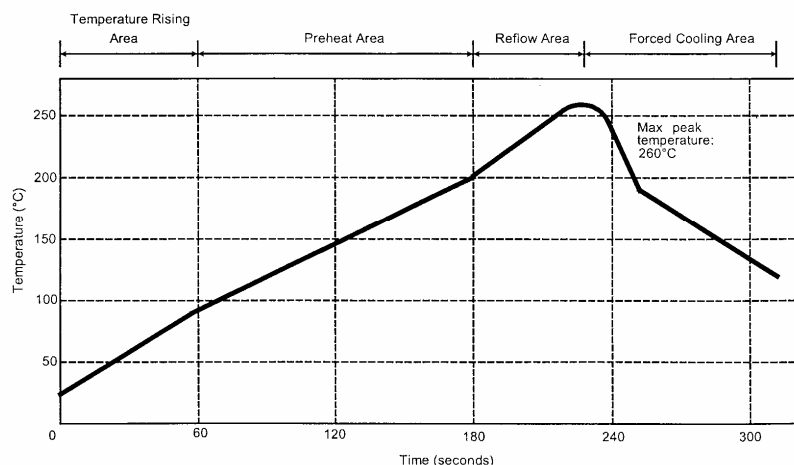
Series : SMA-COM

SOLDER PROCEDURE

1. Deposit solder paste ‘Sn Ag4 Cu0.5’ on mounting zone by screen printing application. We recommend a low residue flux.
We advise a thickness of 150 microm (5.850 microinch). Verify that the edges of the zone are clean.
2. Placement of the receptacle on the mounting zone with an automatic machine of ‘pick and place’ type. A video camera is recommended for positioning of the component . Adhesive agents must not be used on the receptacle.
3. This process of soldering has been tested with convection oven .Below please find ,the typical profile to use.
4. The cleaning of printed circuit boards is not obliged .
5. Verification of solder joints and position of the component by visual inspection.

NOTE : The receptacle and the plug must not be mated before completion of this procedure

TEMPERATURE PROFILE



| Parameter | Value | Unit |
|----------------------------------|-----------|--------|
| Temperature rising Area | 1 - 4 | °C/sec |
| Max Peak Temperature | 260 | °C |
| Max dwell time @260°C | 10 | sec |
| Min dwell time @235°C | 20 | sec |
| Max dwell time @235°C | 60 | sec |
| Temperature drop in cooling Area | -1 to - 4 | °C/sec |
| Max dwell time above 100°C | 420 | sec |

Issue : 1030 A

In the effort to improve our products, we reserve the right to make changes judged to be necessary.



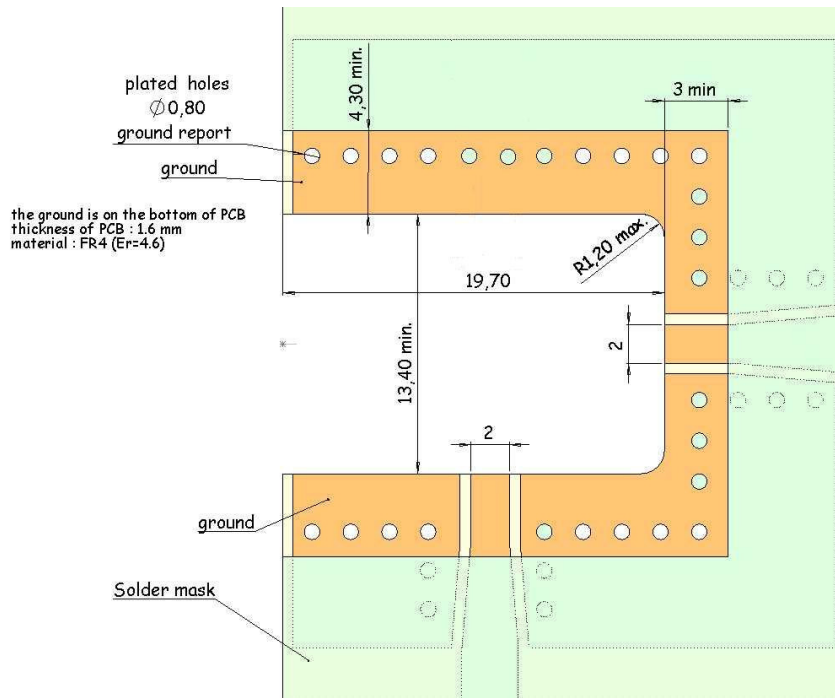
SMA SWITCH EDGE CARD SMT RIGHT TYPE

R124.422.001

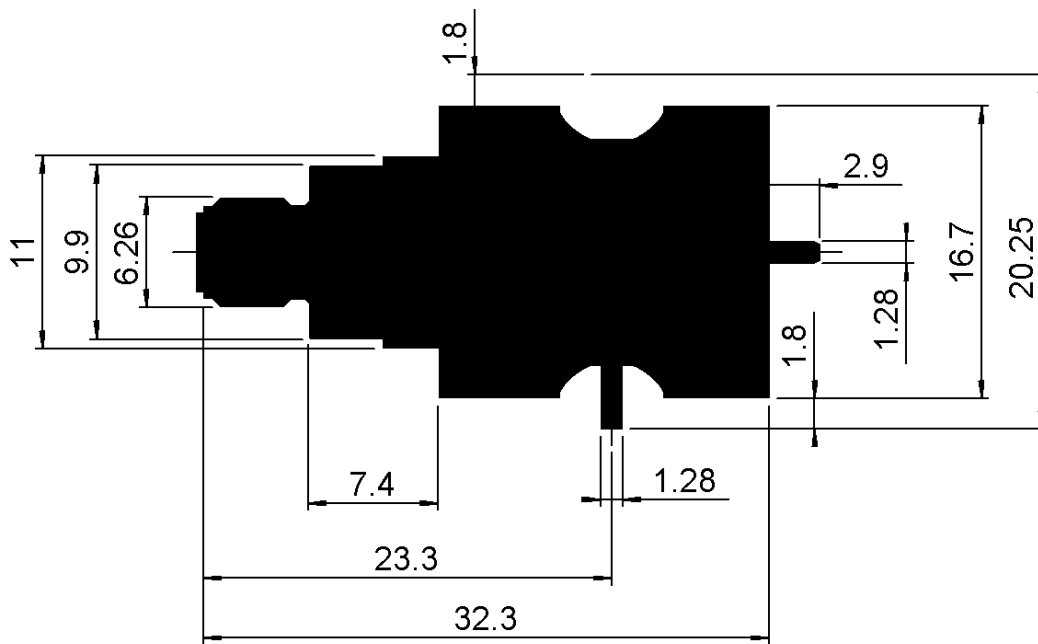
PACKAGING IN REEL 110

Series : SMA-COM

PCB for SMA switch



Shadow of SMA switch for video camera



Issue : 1030 A

In the effort to improve our products, we reserve the right to make changes judged to be necessary.

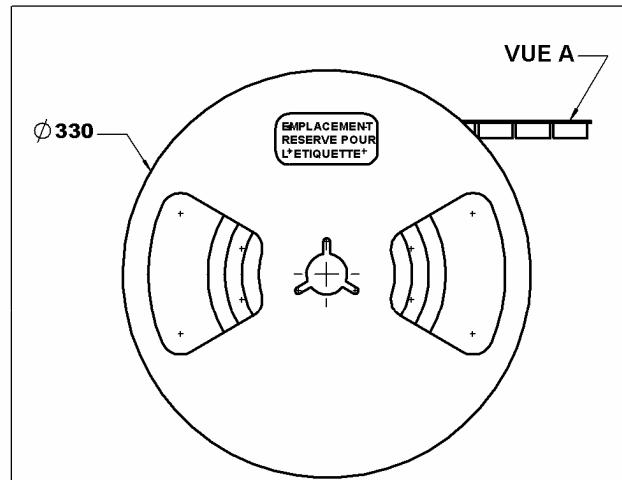


SMA SWITCH EDGE CARD SMT RIGHT TYPE

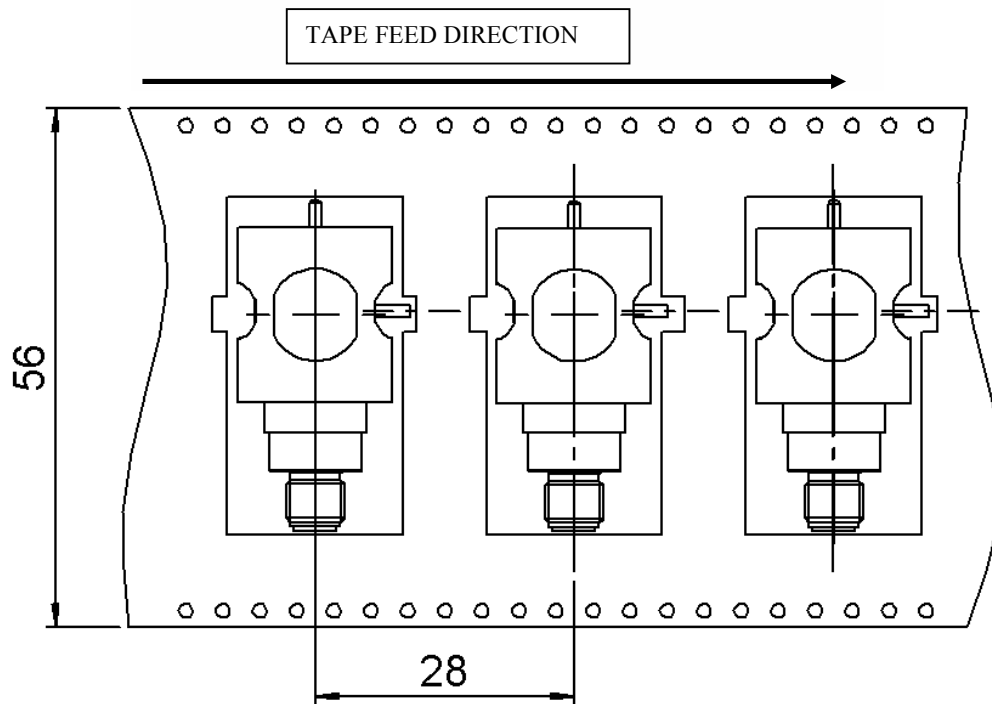
R124.422.001

PACKAGING IN REEL 110

Series : SMA-COM



bobine Ech :0.7



VUE A

Issue : 1030 A

In the effort to improve our products, we reserve the right to make changes judged to be necessary.

