

Change Notice

UB Series

Changes for UB Series with White & Blue Super Bright LEDs

Type of Change:

- Engineering Part Number
 Product Appearance



UB Series Illuminated Pushbuttons and Indicators with super bright white or blue LEDs will be undergoing a change. This will result in different electrical values from those with the previous LEDs. The revision applies to standard and custom switches and indicators. Following are comparisons between specifications, and on page 2, tables of effected standard part numbers.



UB Series with Super Bright White or Blue LEDs will Change

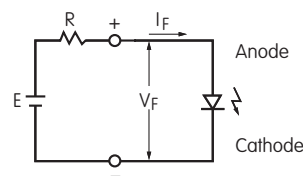
CHANGES TO SPECIFICATIONS FOR WHITE & BLUE SUPER BRIGHT LEDs

The electrical specifications shown are determined at a basic temperature of 25°C. Polarity marks are on the bottom of the switch. The LED is an integral part of switch and is not available separately.

Super Bright LEDs are Electrostatic Sensitive	 ATTENTION ELECTROSTATIC SENSITIVE DEVICES	Before Change		After Change	
		White 6B	Blue 6G	White 6B	Blue 6G
	Color	White 6B	Blue 6G	White 6B	Blue 6G
Maximum Forward Current	I_{FM}	30mA	30mA	30mA	30mA
Typical Forward Current	I_F	20mA	20mA	15mA	20mA
Forward Voltage	V_F	3.2V	3.2V	2.9V	2.9V
Maximum Reverse Voltage	V_{RM}	5V	5V	5V	5V
Current Reduction Rate Above 25°C	ΔI_F	0.40 mA/°C	0.40 mA/°C	* 0.38 mA/°C	0.33 mA/°C
Ambient Temperature Range		-25° ~ +50°C		-25° ~ +50°C	
* Specification determined at a basic temperature of 35°C					

Notes

- The LED circuit is isolated and requires an external power source.
- If the source voltage exceeds the rated voltage, a ballast resistor is required. The resistor value can be calculated by using the formula shown here.
- There are no changes to any other specifications or external dimensions.
- Contact the factory if further details are needed.



$$R = \frac{E - V_F}{I_F}$$

Where: R = Resistor Value (Ohms)
 E = Source Voltage (V)
 V_F = Forward Voltage (V)
 I_F = Forward Current (A)

Effective Date

Changes to super bright LEDs for UB Series Illuminated Pushbuttons and Indicators will be effective October 2018.

NKK
SWITCHES

www.nkkswitches.com • 1.877.2BUYNKK (228.9655)

7850 East Gelding Drive • Scottsdale, AZ 85260 • Telephone 480.991.0942 • Fax 480.998.1435

Change Notice

UB Series

Changes for UB Series with White & Blue Super Bright LEDs

UB Switches Part Numbers					
UB15NBKG016G	UB15NBKG016G-JB	UB15SKW036G	UB15SKW036G-JB	UB15SKW036G-AB	UB15SKG036G
UB15SKG036G-JB	UB15SKG036G-AB	UB15KKW016G	UB15KKW016G-JB	UB15KKW016G-AB	UB15KKG016G
UB15KKG016G-JB	UB15KKG016G-AB	UB16SKW036G	UB16SKW036G-JB	UB16SKW036G-AB	UB16SKG036G
UB16SKG036G-JB	UB16SKG036G-AB	UB16KKW016G	UB16KKW016G-JB	UB16KKW016G-AB	UB16KKG016G
UB16KKG016G-JB	UB16KKG016G-AB	UB25SKW036G	UB25SKW036G-JB	UB25SKW036G-AB	UB25SKG036G
UB25SKG036G-JB	UB25SKG036G-AB	UB25KKW016G	UB25KKW016G-JB	UB25KKW016G-AB	UB25KKG016G
UB25KKG016G-JB	UB25KKG016G-AB	UB26SKW036G	UB26SKW036G-JB	UB26SKW036G-AB	UB26SKG036G
UB26SKG036G-JB	UB26SKG036G-AB	UB26KKW016G	UB26KKW016G-JB	UB26KKW016G-AB	UB26KKG016G
UB26KKG016G-JB	UB26KKG016G-AB	UB15SKW036B	UB15SKW036B-JB	UB15SKW036B-AB	UB15SKG036B
UB15SKG036B-JB	UB15SKG036B-AB	UB15KKW016B	UB15KKW016B-JB	UB15KKW016B-AB	UB15KKG016B
UB15KKG016B-JB	UB15KKG016B-AB	UB16SKW036B	UB16SKW036B-JB	UB16SKW036B-AB	UB16SKG036B
UB16SKG036B-JB	UB16SKG036B-AB	UB16KKW016B	UB16KKW016B-JB	UB16KKW016B-AB	UB16KKG016B
UB16KKG016B-JB	UB16KKG016B-AB	UB25SKW036B	UB25SKW036B-JB	UB25SKW036B-AB	UB25SKG036B
UB25SKG036B-JB	UB25SKG036B-AB	UB25KKW016B	UB25KKW016B-JB	UB25KKW016B-AB	UB25KKG016B
UB25KKG016B-JB	UB25KKG016B-AB	UB26SKW036B	UB26SKW036B-JB	UB26SKW036B-AB	UB26SKG036B
UB26SKG036B-JB	UB26SKG036B-AB	UB26KKW016B	UB26KKW016B-JB	UB26KKW016B-AB	UB26KKG016B
UB26KKG016B-JB	UB26KKG016B-AB	—	—	—	—

Effected part numbers include standard part numbers combined with any cap type or color.

UB Indicators Part Numbers					
UB01KW036G	UB01KW036G-JB	UB01KW036G-AB	UB04KW016G	UB04KW016G-JB	UB04KW016G-AB
UB01KW036B	UB01KW036B-JB	UB01KW036B-AB	UB04KW016B	UB04KW016B-JB	UB04KW016B-AB
UB06KW016B	UB06KW016B-CC	UB06KW016B-DD	UB06KW016B-FF	UB06KW016B-JB	—

Effected part numbers include standard part numbers combined with any cap type or color.



www.nkkswitches.com • 1.877.2BUYNKK (228.9655)

7850 East Gelding Drive • Scottsdale, AZ 85260 • Telephone 480.991.0942 • Fax 480.998.1435