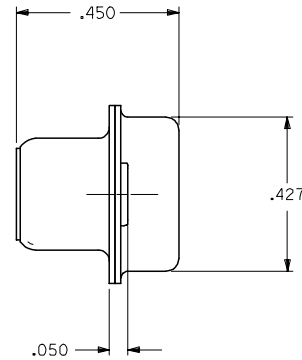
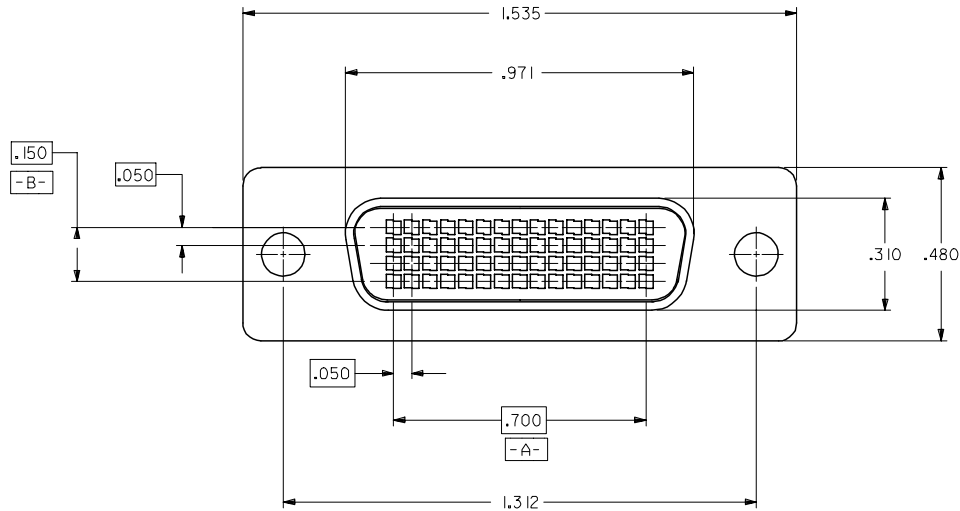
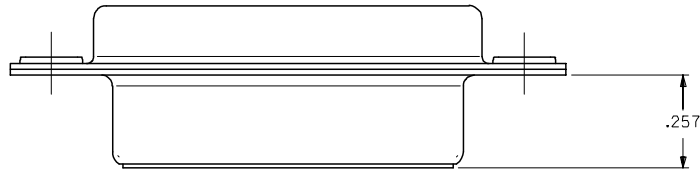


|             |   |    |                     |   |   |   |   |   |   |   |   |   |
|-------------|---|----|---------------------|---|---|---|---|---|---|---|---|---|
| 13          | 12  | 11 | 10                  | 9 | 8 | 7 | 6 | 5 | 4 | 3 | 2 | 1 |
| PART NUMBER | PRODUCT DESCRIPTION                         |    | FRONT SHELL PLATING |   |   |   |   |   |   |   |   |   |
| 71691-0003  | 60ckt I/O RECEPTACLE CONNECTOR SUB-ASSEMBLY |    | BRIGHT TIN          |   |   |   |   |   |   |   |   |   |
| 71691-9003  | 60ckt I/O RECEPTACLE CONNECTOR SUB-ASSEMBLY |    | BRIGHT NICKEL       |   |   |   |   |   |   |   |   |   |

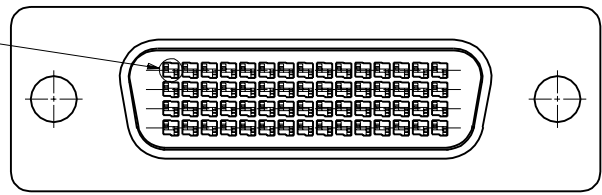
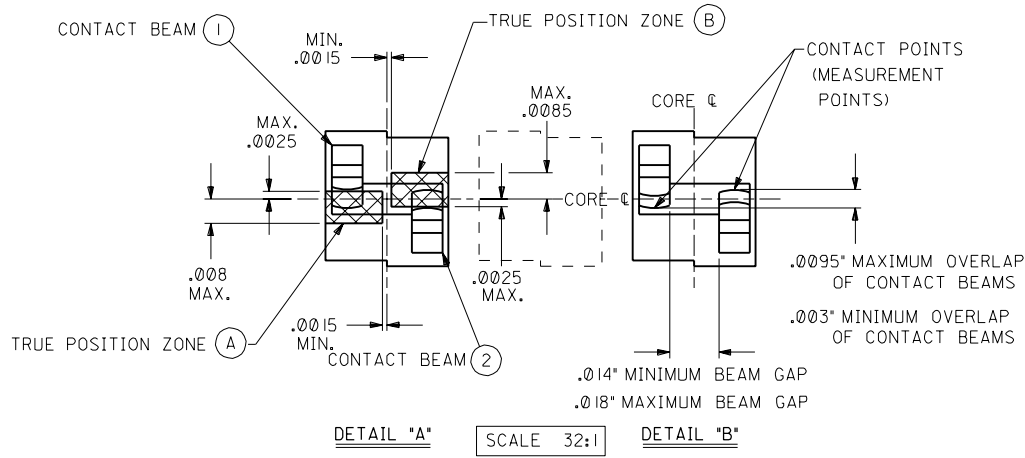
**NOTES:**

- DAMAGE OF THE CONTACT FINGERS DURING THE ASSEMBLY OPERATION IS UNACCEPTABLE. CORRECT ALIGNMENT OF THE TERMINAL STRIP ASSEMBLIES, PRIOR TO AND DURING ASSEMBLY IS NECESSARY TO AVOID DAMAGE.
- PLASTIC HOUSING:  
GLASS FILLED LCP (LIQUID CRYSTAL POLYMER), UL 94 V-0, COLOR: BLACK.
- FRONT SHELL:  
DEEP DRAWN STEEL, .016" THICK;  
PLATING: SEE TABLE  
BRIGHT TIN: 150-250 MICROINCHES BRIGHT TIN OVER 50-150 MICROINCHES NICKEL OVER COPPER FLASH OVERALL (OPTIONAL).  
BRIGHT NICKEL: 100-175 MICROINCHES BRIGHT NICKEL OVER 50 MICROINCHES MAXIMUM COPPER OVERALL.
- BACK SHELL:  
DEEP DRAWN STEEL, .016" THICK;  
PLATING: 150-250 MICROINCHES BRIGHT TIN OVER 50-150 MICROINCHES NICKEL OVER COPPER FLASH OVERALL (OPTIONAL).
- THIS PRODUCT CONFORMS TO PRODUCT SPECIFICATION PS-70928.
- INSERT-MOLDED TERMINAL STRIP ASSEMBLIES ARE SUPPLIED SEPARATELY (SEE SHEET 2 FOR ORDERING INFORMATION).
- PACKAGING SPECIFICATION PK-70873-0236 APPLIES.



|     |     |
|-----|-----|
| 2   | A   |
| 1   | C   |
| SHT | REV |

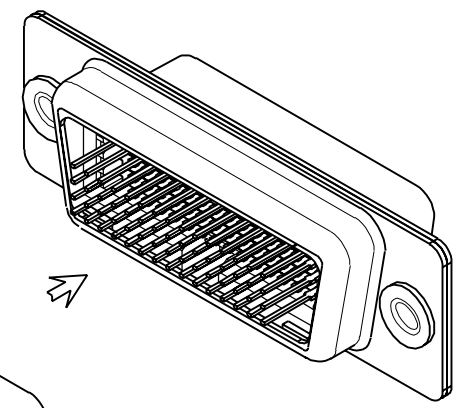
|   |  |                                       |          |                           |          |           |   |                        |  |
|---|--|---------------------------------------|----------|---------------------------|----------|-----------|---|------------------------|--|
| ADD 71691-9003<br>EC NO: UCP2006-0666<br>DRAWNS: BARRA 2006/02/06<br>CHKD: MORGAN 2006/02/07<br>APPR: MILLER 2006/02/09 | DESCRIPTION<br>QUALITY SYMBOLS<br>▽=0<br>▽=0 | GENERAL TOLERANCES (UNLESS SPECIFIED) |          | DIMENSION STYLE INCH ONLY |          | SCALE 4:1 | DESIGN UNITS INCH   | THIRD ANGLE PROJECTION |  |
|   |  | mm                                    | INCH     | DRAWN BY                  | DATE     | TITLE     | .050 PITCH LFH<br>60 CKT I/O<br>SALES ASSEMBLY<br><b>molex</b> MOLEX INCORPORATED<br>MATERIAL NO. SDA-71691-0003<br>DOCUMENT NO. SHEET NO. 1 OF 2 |                        |  |
|   |  | 4 PLACES ±                            | ±        | SCHMIDGALL                | 93/08/04 |           |   |                        |  |
|   |  | 3 PLACES ±                            | ±        | CHECKED BY                | DATE     |           |   |                        |  |
| 2 PLACES ±  | ±  | OSULLIVAN                             | 93/08/04 |                           |          |           |   |                        |  |
| 1 PLACE ±   | ±  | APPROVED BY                           | DATE     |                           |          |           |   |                        |  |
| ANGULAR ±1/2°   |  | BIXLER                                |          | 93/08/04                  |          |           |   |                        |  |
| DRAFT WHERE APPLICABLE MUST REMAIN WITHIN DIMENSIONS  |  | SEE TABLE                             |          |                           |          |           |   |                        |  |



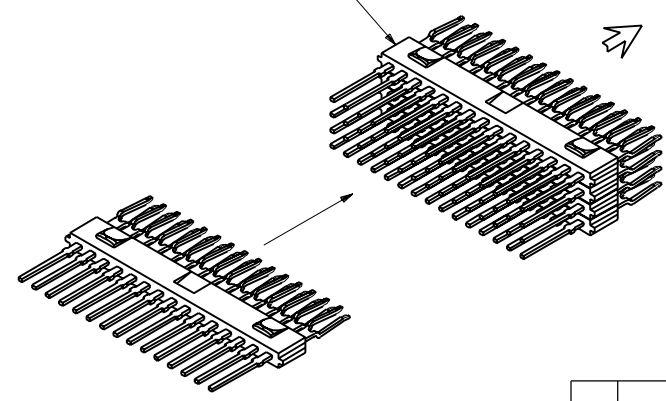
CONTACT TRUE POSITION REQUIREMENTS

- \* CONTACT BEAM (1) MAY BE LOCATED ANYWHERE WITHIN THE BOUNDARIES OF TRUE POSITION ZONE (A) PROVIDED THAT THE CONDITIONS OF DETAIL "B" ARE MET.
- \* CONTACT BEAM (2) MAY BE LOCATED ANYWHERE WITHIN THE BOUNDARIES OF TRUE POSITION ZONE (B) PROVIDED THAT THE CONDITIONS OF DETAIL "B" ARE MET.

NOTE: ALL TRUE POSITION MEASUREMENTS TO BE TAKEN AT CONTACT POINTS, NOT AT CONTACT TIPS. ALL TRUE POSITION ZONES ARE TO BE DEFINED RELATIVE TO THE HOUSING CORE CENTERLINES.



STEP 1.  
 STACK 4 STRIP ASSEMBLIES AS SHOWN



STEP 2.  
 AFTER TERMINATION, ASSEMBLE THE STACKED STRIP ASSEMBLIES INTO THE CONNECTOR HOUSING, ENSURING THAT THE LATCHES ARE CORRECTLY ORIENTATED AND SEATED.

INSERT-MOLDED TERMINAL STICKS  
 FOUR REQUIRED PER ASSEMBLY  
 (SEE SALES DRAWING: SDA-70985-100\*)

|  |                     |  |   |                           |             |
|--|---------------------|--|---|---------------------------|-------------|
| DIMENSIONS SHOWN (METRIC) INCH<br>UNLESS OTHERWISE SPECIFIED<br>TOLERANCES: ANGULAR ± 1/2° |                     | ▽ = 0 ▼ = 0  |   | REVISE ONLY ON CAD SYSTEM |             |
| 5 PLACE ± --- ---  | INCH                | METRIC   | TITLE<br>.050" PITCH LFH<br>60 ckt I/O<br>SALES ASSEMBLY                |                           |             |
| 2 PLACE ± --- ± ---  |                     |  | MOLEX INCORPORATED SHEET NO. DATE<br>L15LE.ILL. 60532 U.S.A. 2 08/04/93 |                           |             |
| 1 PLACE --- ± ---  |                     |  | PART NO. DRWG. NO.<br>SEE SHEET 1 SDA-71691-0003                        |                           |             |
| DRAFT WHERE APPLICABLE MUST REMAIN WITHIN DIMENSIONS                                       |                     | THIS DRAWING CONTAINS INFORMATION THAT IS PROPRIETARY TO MOLEX INC. AND SHOULD NOT BE USED WITHOUT WRITTEN PERMISSION. |   |                           |             |
| DRW'G BY: SCHMIDGALL   | CHK'D BY: OSULLIVAN | FILE NAME: S71691X2  | APP'D BY: BIXLER  | SCALE: 4:1                | SIZE: CD    |
| LTR.   | REVISIONS           | LTR.   | REVISIONS   | A                         | SEE SHEET 1 |