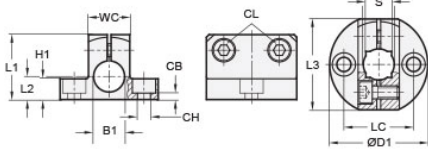




MT8/8-CB2W-A

Ruland Two-Way Base Connector, Thru Hole 8mm, Base Diameter 31.5mm, Aluminum




Description

Ruland MT8/8-CB2W-A is a two-way base connector with a 31.5mm base diameter, 8mm round thru holes, M4 clamp screws, and an overall length of 20mm. It is designed to fit with Ruland tubes that begin with MT8. MT8/8-CB2W-A is aluminum and screws are 304 stainless steel for use in most industrial applications. This two-way base connector is typically used as a base in support structures for mounting sensors, screens, reflectors, plexiglass machine guards, and other industrial components. It can be permanently installed on extruded aluminum frames, sheet metal, and other surfaces using M4 hardware or the user can opt for portability by using MAGNET-43-22 magnetic base. MT8/8-CB2W-A can have MT8 round tubes installed vertically and/or horizontally giving system designers a high degree of flexibility to customize the base to the needs of applications throughout the equipment. MT8-ALK-M4-16 adjustable clamping handles can be used in place of standard hardware if rapid fine repositioning of the tube is required. MT8/8-CB2W-A is manufactured by Otto Ganter, inventoried by Ruland, and RoHS3 compliant.

Product Specifications

Thru Hole 1 Diameter B1	8 mm	Thru Hole 2 Diameter B2	8 mm
Thru Hole Tolerance	+0.09/-0 mm	Thru Hole 2 Tolerance	+0.09/-0 mm
Clamp Width WC	14 mm	Clamp Length L3	29 mm
Base Diameter D1	31.5 mm	Overall Height H1	20 mm
Center To Center LC	22 mm	Edge To Center L2	7 mm
Counterbore Hole CH	M4	Counterbore to Base CB	3 mm
Clamp Screw CL	M4	Weight (lbs)	0.050700
Material Specification	Aluminum	Manufacturer	JW Winco/ Otto Ganter
UPC	634529232231	Country of Origin	Germany
Tariff Code	7609.00.0000	UNSPC	31162908

Note 1 Performance ratings are for guidance only. The user must determine suitability for a particular application.

Prop 65  **WARNING** This product can expose you to the chemical Nickel (metallic), known to the State of California to cause cancer. For more information go to www.P65Warnings.ca.gov.