

INFRARED THAT FITS IN YOUR POCKET

DURABLE, COMPACT, AND PRECISE

ICI's Pivot-IR is the industry-leading pocket-sized thermal imaging device. The Pivot-IR's compact size and ergonomic design allows users to easily survey hard to reach areas such as vents, man-holes, and other tight places to quickly identify and diagnose hidden application faults. The camera is also designed with Wi-Fi support, automatic alarms, and real-time video streaming.



Pivot-IR



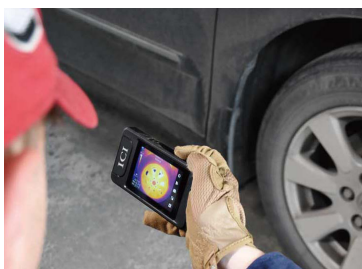
UNMATCHED ACCESSIBILITY

Designed to fit in your pocket, the Pivot-IR measures 142 mm x 76 mm x 19 mm (5.56" x 2.99" x 0.75"). Its compact size and 90° rotating lens provides immediate access to hard to reach areas, allowing users to locate and identify hidden faults.



RUGGED AND RELIABLE

The Pivot-IR was specifically designed to hold up in the toughest, most demanding work environments. Despite its compact size, the Pivot-IR's IP54 rating makes it durable against dirt, dust, and other non-corrosive materials. Its design has proven to hold up in the harshest of work conditions.



EXTREME PRECISION

Like all ICI thermal solutions, the Pivot-IR is extremely accurate to within 2°C. With its built-in temperature analysis features users can rely on the Pivot-IR to provide a precise diagnosis, regardless of the application.



The Pivot-IR is a pocket-sized thermal imager that measures high temperatures ranging from -20 °C to 550 °C (-4 °F to 1022 °F). Discover hidden issues using the 256 x 192 detector and the 90° rotating lens with automatic screen rotation to inspect hard to reach places. Radiometry is accurate to $\pm 2^{\circ}\text{C}$ ($\pm 3.6^{\circ}\text{F}$) or $\pm 2\%$ for spot on data capture. Features Wi-Fi support, automatic alarms, and real-time infrared video streaming.

Features

- Wi-Fi support
- High-temperature measuring
- Alarm threshold settings
- Interval photography and alarm snapshots
- Unlimited voice annotation, text available
- Central spot, hot spot and cold spot tracing
- 10 spots/10 lines/10 areas of temperature analysis
- Automatic/manual file naming
- Touchscreen, 3.5" color
- 2 m (6.56') drop protection
- Automatic screen rotation
- Power management
- Small size, light weight

Applications

- Overheating fuses
- Plumbing/Appliance repair
- Air leak detection
- Transportation/Automotive
- HVAC/AC maintenance
- Home/building Inspections
- General maintenance

Accessories

- USB Type-C Cable
- 1/4"-20 tripod support (built-in)
- Soft carry case

Specifications

- **Pixel Resolution:** 256 x 192
- **Accuracy:** $\pm 2^{\circ}\text{C}$ ($\pm 3.6^{\circ}\text{F}$) or $\pm 2\%$
- **Temperature Range:** -20 °C to 550 °C (-4 °F to 1022 °F)
- **Operation Range:** -10 °C to 50 °C (-14 °F to 122 °F)
- **Storage Range:** -20 °C to 70 °C (-4 °F to 158 °F)
- **Detector Array:** UFPA (VOx)
- **Pixel Pitch:** 12 μm
- **FOV:** 56° x 42°
- **I FOV:** 3.75 mrad
- **Focal Length:** 3.2 mm
- **Focus:** fixed
- **Measurement Distance:** 0.5 m - 4 m, step size 50 cm (1.6' - 13.12', step size 9.84")
- **Spectral Band:** 8 μm to 14 μm
- **Thermal Sensitivity (NETD):** < (40 mK) 0.04 °C at 30 °C (86°F)
- **Frame Rate:** 25 Hz
- **Humidity:** 95% non-condensing
- **Pixel Operability:** > 99 %
- **Drop Rating:** 2 m (6.56')
- **Dimensions (without lens):**
142 mm x 76 mm x 19 mm (L x W x D ± 0.5 mm)
(5.56" x 2.99" x 0.75" (L x W x H ± 0.02 "))
- **Weight:** 210 g (7.41 oz)
- **Power:** 5V DC 2A
- **Battery:** internal, rechargeable
- **Operation Time:** 6 hours, continuous
- **Charging Time:** 3 hours
- **Power Management:** adjustable
- **Interface:** USB Type-C
- **Video:** UVC streaming, real-time infrared (with data)
- **Image Format:** IR JPG (with data) + visible JPG
- **Image Polarity:** 7 options
- **Image Modes:** IR, fusion (ICI Dual Vision), visible, picture-in-picture
- **Memory:** 16 GB, internal
- **Screen:** 3.5" color touchscreen, 960 x 640
- **Brightness:** adjustable
- **Digital Camera:** 1920 x 1080, 2 MP
- **Zoom:** 2x, 4x
- **Emissivity Correction:** 0.01 to 1.0
- **Measurement Units:** °C, °F, °K
- **IP Rating:** IP54
- **Language:** multi-language
- **Light:** LED, 200 W
- Automatic alarms
- Alarm snapshot (duration and frequency)
- Interval photography (duration and frequency)
- Internal non-uniformity correction (NUC)
- Unlimited voice annotation, text available
- Wi-Fi support