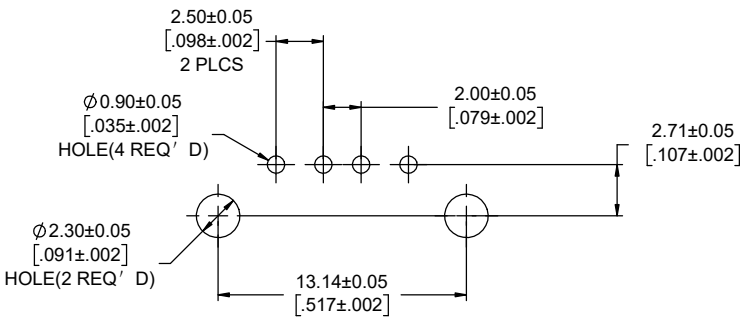
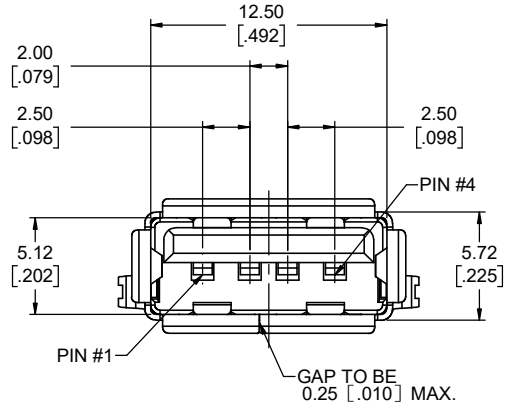
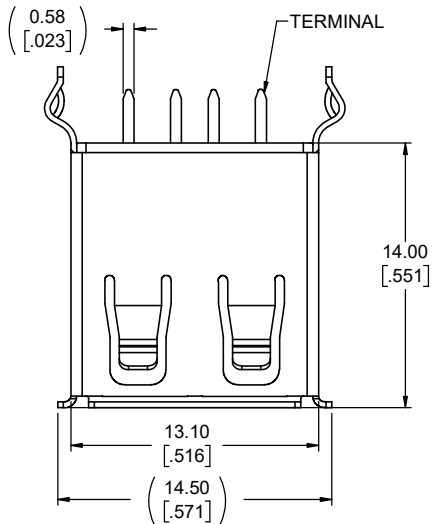


## Amphenol Canada Corp - Product Change Notice (PCN)

PCN Date	June 17, 2020
Supplier Name:	Amphenol
Amphenol Canada PCN Number	PCN-C1490
Description of Change #1	Connector made using new housing, contact and shield tooling.
Reason for Change #1	Existing toolings are too old and need to be discarded;
Description of Change #2	Eliminate options - beige coloured housing
Reason for Change #2	Un-common color, no requests from customers
Summary of changes between new and old part	There has no significant difference between old and new parts (the design for old and new part are same), but maybe some visual difference caused by new tooling.
Traceability guidelines (lot code / date code, markings, ship date...)	New product phased in after date code 2045
Last Time Buy Date	N/A
Datasheet attached? & Filename(s)	P-UE27-ACX4-X0X-Rev F & P-UE27-AEX4-X0X-Rev E
Qual Test data attached? & Filename(s)	

Customer Part Number	Amphenol Old Part Number	Amphenol New Part Number	PCN Effectivity Date	Samples Availability Date	Last Time Buy Date	Expected Supplier Qual Date
	UE27-AC54-100	UE27-AC54-100	01-Nov-20	01-Oct-20		01-Nov-20
	UE27-AC54-10H	UE27-AC54-10H	01-Nov-20	01-Oct-20		01-Nov-20
	UE27-AC74-100	UE27-AC74-100	01-Nov-20	01-Oct-20		01-Nov-20
	UE27-AC74-10H	UE27-AC74-10H	01-Nov-20	01-Oct-20		01-Nov-20
	UE27-AE54-100	UE27-AE54-100	01-Nov-20	01-Oct-20		01-Nov-20
	UE27-AE54-10H	UE27-AE54-10H	01-Nov-20	01-Oct-20		01-Nov-20
	UE27-AE74-100	UE27-AE74-100	01-Nov-20	01-Oct-20		01-Nov-20
	UE27-AE74-10H	UE27-AE74-10H	01-Nov-20	01-Oct-20		01-Nov-20

REVISIONS			
REV	DESCRIPTION, ECN, EAR NO.	DATE	APP'D
D	PRODUCT DWG (EAR 14178)	JAN27/16	K.L.
E	UPDATED THE DRAWING FORMAT	JUN22/20	A.G.



**RECOMMENDED P.C.B LAYOUT**  
COMPONENT SIDE OF BOARD



**AMPHENOL PART NUMBER: UE27 - AEX4 - X0X**

**SERIES** \_\_\_\_\_  
UE27 = RECEPTACLE

**TYPE** \_\_\_\_\_  
A = SERIES A

**STYLE** \_\_\_\_\_  
E = STRAIGHT PCB, VERTICAL MOUNT

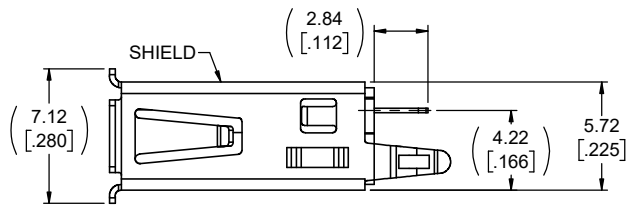
**CONTACT PLATING OPTION** \_\_\_\_\_  
5 = 0.76µm(30µ") GOLD ON CONTACT MATING AREA OVER  
1.27µm(50µ") NICKEL OVERALL.  
2.54µm(100µ") TIN PLATING ON CONTACT TAILS.  
7 = GOLD FLASH ON CONTACT MATING AREA OVER  
1.27µm(50µ") NICKEL OVERALL.  
2.54µm(100µ") TIN PLATING ON CONTACT TAILS.

**MODIFIER**  
0=PBT HOUSING  
H=HIGH TEMPERATURE HOUSING (MAXIMUM TEMPERATURE RATING 250°C FOR 10s)

**SHIELDING STYLE**  
0=NO REAR SHIELD

**COLOUR**  
1 = BLACK

**NUMBER OF CONTACTS**  
4 = 4 CONTACTS



**NOTES:**

- ALL MATERIALS TO BE RoHS COMPLIANT PER EU DIRECTIVE 2011/65/EU AND AMENDMENTS.  
• HOUSING:ENGINEERING THERMOPLASTIC,UL FLAMMABILITY RATING 94 V-0.  
• CONTACTS:COPPER ALLOY,CONTACT PLATING:SEE PART NUMBER ORDERING CODE FOR OPTIONS.  
• SHELL:COPPER ALLOY PLATED WITH NICKEL OVER COPPER UNDERPLATE.
- ELECTRICAL CHARACTERISTICS:  
CURRENT RATING: 1.5A@250V AC.  
CONTACT RESISTANCE: 30 MILLIOHMS MAX.  
DIELECTRIC WITHSTANDING VOLTAGE: 500 AC.  
MATING CYCLES: 1500 CYCLES.  
OPERATING TEMPERATURE: -40°C TO +85°C.

UNLESS SPECIFIED OTHERWISE	DRAWN	A.NONG	MAY26/20
PRIMARY UNITS	MILLIMETERS	CHECKED	E.QU
SECONDARY	INCHES	M.E. APP'D	
REFERENCE IN PARENTHESES		Q.A. APP'D	
GENERAL TOLERANCES	DWG APPR.	A.GREEN	JUN22/20
1 DECIMAL PLACE	ENG. REL. NO.		
2 DECIMAL PLACES	REF.		
3 DECIMAL PLACES	THIRD ANGLE PROJECTION		
ANGULAR DEGREES	DO NOT SCALE DRAWING		

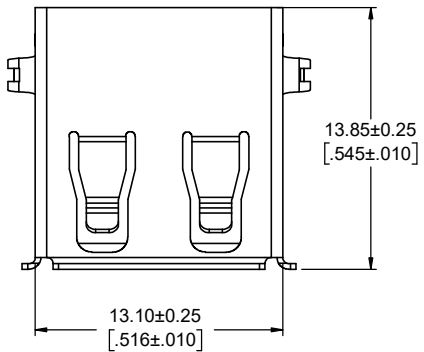
**Amphenol Canada Corp.**  
Commercial Products

UNIVERSAL SERIAL BUS (SERIES A)  
RECEPTACLE,  
STRAIGHT PCB TAIL, VERTICAL MOUNT-  
RoHS COMPLIANT

DWG. NO. **P-UE27-AEX4-X0X**

CODE ID NO. **03554** DWG SIZE: **X** SCALE: **5:1** SHEET **1 OF 1**

REVISIONS			
REV	DESCRIPTION, E.C.N., EAR NO.	DATE	APP'D
E	PRODUCT DRAWING(EAR14178)	OCT16/15	K.L.
F	UPDATED THE DRAWING FORMAT	JUN22/20	A.G.



**AMPHENOL PART NUMBER: U E 2 7 - A C X 4 - X 0 X**

**SERIES** \_\_\_\_\_  
 UE27 =USB 2.0 RECEPTACLE

**TYPE** \_\_\_\_\_  
 A= SERIES A

**STYLE** \_\_\_\_\_  
 C=RIGHT ANGLE PCB

**MODIFIER**  
 0=PBT HOUSING  
 H=HIGH TEMPERATURE HOUSING  
 (MAXIMUM TEMPERATURE RATING 250°C FOR 10s)

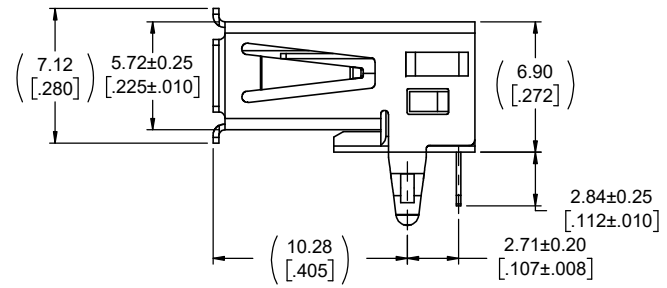
**SHIELDING STYLE**  
 0=NO REAR SHIELD

**COLOUR**  
 1 = BLACK

**NUMBER OF CONTACTS**  
 4 = 4 CONTACTS

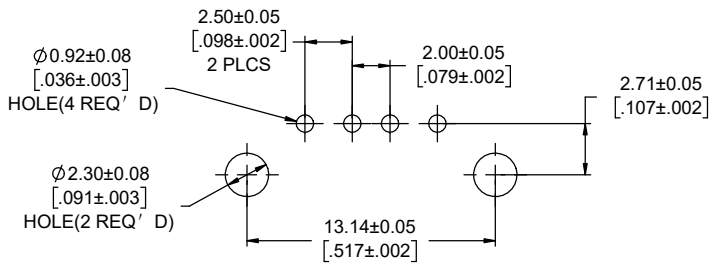
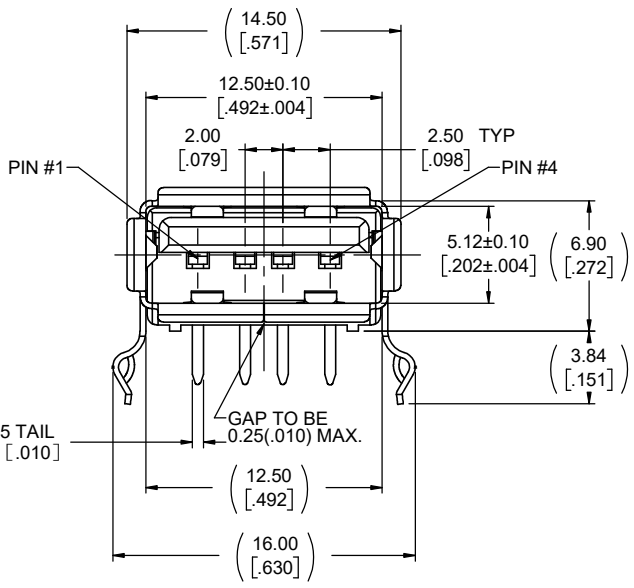
**CONTACT PLATING OPTION**  
 5 = 0.76µm(30µ") GOLD ON CONTACT MATING AREA OVER  
 1.27µm(50µ") NICKEL OVERALL.  
 2.54µm(100µ") TIN PLATING ON CONTACT TAILS.

7 = GOLD FLASH ON CONTACT MATING AREA OVER  
 1.27µm(50µ") NICKEL OVERALL.  
 2.54µm(100µ") TIN PLATING ON CONTACT TAILS.



**NOTES:**

- ALL MATERIALS TO BE RoHS COMPLIANT PER EU DIRECTIVE 2011/65/EU AND AMENDMENTS.
  - HOUSING:ENGINEERING THERMOPLASTIC,UL FLAMMABILITY RATING 94 V-0.
  - CONTACTS:COPPER ALLOY.CONTACT PLATING:SEE PART NUMBER ORDERING CODE FOR OPTIONS.
  - SHELL:COPPER ALLOY PLATED WITH NICKEL OVER COPPER UNDERPLATE.
- ELECTRICAL CHARACTERISTICS:  
 CURRENT RATING: 1.5A@250V AC.  
 CONTACT RESISTANCE: 30 MILLIOHMS MAX.  
 DIELECTRIC WITHSTANDING VOLTAGE: 500 AC.  
 MATING CYCLES: 1500 CYCLES.  
 OPERATING TEMPERATURE: -40°C TO +85°C.



**RECOMMENDED PC BOARD LAYOUT**  
 COMPONENT SIDE OF BOARD



UNLESS SPECIFIED OTHERWISE	DRAWN	A.NONG	MAY26/20
PRIMARY UNITS	MILLIMETERS	CHECKED	E.QU
SECONDARY	INCHES	M.E. APP'D	JUN22/20
REFERENCE IN PARENTHESES	Q.A. APP'D		
GENERAL TOLERANCES	ENG. REL. NO.	A.GREEN	JUN22/20
1 DECIMAL PLACE	REF.		
2 DECIMAL PLACES	THIRD ANGLE PROJECTION		
3 DECIMAL PLACES	DO NOT SCALE DRAWING		
ANGULAR DEGREES			

**Amphenol Canada Corp.**  
 Commercial Products

UE27 SERIES USB RECEPTACLE,  
 SERIES A, RIGHT ANGLE PCB TAIL,  
 RoHS COMPLIANT

DWG. NO. **P-UE27-ACX4-X0X** REV **F**

CODE ID NO. **03554** DWG SIZE: **X** SCALE: **5:1** SHEET **1** OF **1**