

•Indice de révision du plan client SD-98696-003 hauteur 15 ±0.05 en retrait de la face 0.15 ±0.05.
 •Revision level according to SD-98696-003 height 15 ±0.05 in recess of the face 0.15 ±0.05.

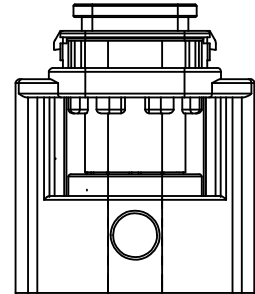
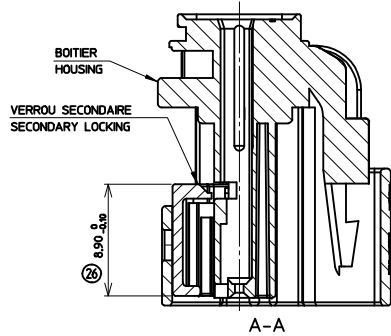
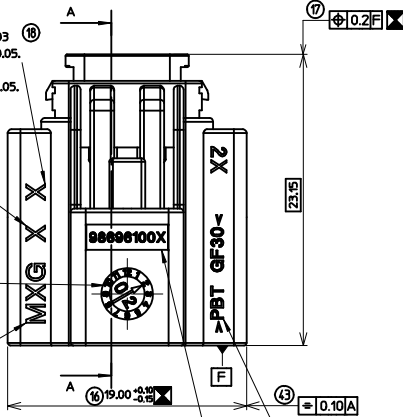
•Indice de cavité moulée hauteur 15 ±0.05 en retrait de la face 0.15 ±0.15.
 •Mold cavity marking height 15 ±0.05 in recess of the face 0.15 ±0.05.

•Dateur Ø4 en retrait de la face 0.15 ±0.05.
 •Date indicator Ø4 in recess of the face 0.15 ±0.05.

•Logo MOLEX: MXG hauteur 15 ±0.05 en retrait de la face 0.15 ±0.05.
 •Logo MOLEX: MXG height 15 ±0.05 in recess of the face 0.15 ±0.05.

•Référence MOLEX de la pièce hauteur 15 ±0.05 en retrait de la face 0.15 ±0.05.
 •Reference MOLEX of the part height 15 ±0.05 in recess of the face 0.15 ±0.05.

•Référence matière hauteur 15 ±0.05 en retrait de la face 0.15 ±0.05.
 •Material reference height 15 ±0.05 in recess of the face 0.15 ±0.05.



NOMENCLATURE / PARTS LIST

DESIGNATION DESIGNATION	REFERENCE MOLEX MOLEX P/N	MATIERE MATERIAL	COULEUR COLOUR
BOITIER HOUSING	98696-0002	PBT GF30	NOIRE BLACK
VERROU SECONDAIRE SECONDARY LOCKING	98594-0001	PBT GF30	VERT GREEN
FORTE-CLIPS/FEMALE MODULE	98696-1002	---	---

PRODUITS ASSOCIES / ASSOCIATED PARTS

DESIGNATION	REF. MOLEX / MOLEX P/N
CLIP MOX 0,635 ETAME FIL / FEMALE TERMINAL TIN PLATED MOX 0,635 WIRE	98658-1211 and 98658-1212

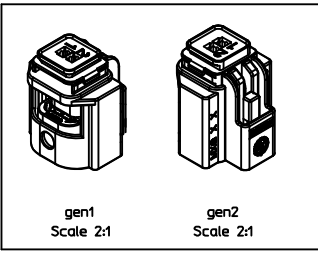
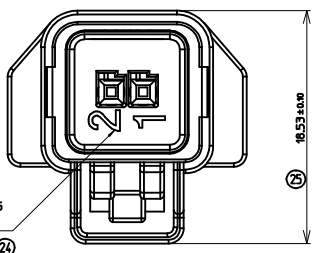
MISE EN OEUVRE / SPECIFICATION FILE

CAHIER DE PRECONISATIONS N° : / APPLICATION SPECIFICATION N° : AS-98696-001

PRINCIPALES PROPRIETES MECANIQUES MAIN MECHANICAL PROPERTIES	VALEURS VALUES
FORCE D'INSERTION DES CLIPS FEMALE TERMINAL INSERTION FORCE	5N MAX
EFFORT DE FERMETURE DU VERROU SECONDAIRE LOCKING FORCE OF SECONDARY LOCKING	30N < F < 50N
EFFORT DE MONTAGE DU CONNECTEUR SUR INTERFACE CONNECTOR MATING FORCE ON INTERFACE	60N MAX
TENUE DES CLIPS AUX EFFORTS D'ARRACHEMENTS CONNECTOR RETENTION FORCE ON INTERFACE	70N MIN.
TENUE A L'ARRACHEMENT DU CONNECTEUR SUR L'INTERFACE CONNECTOR RETENTION FORCE ON INTERFACE	100N MIN.
CLASSE DE TEMPERATURE OPERATING TEMPERATURE	-40°C to +85°C

☞ - REPERAGE DES DIMENSIONS POUR LE RAPPORT D'INSPECTION
 ☞ - DIMENSIONS MARKING FOR THE INSPECTION REPORT

SPECIFICATION MOLEX DE CONDITIONNEMENT N° : PP-98696-001
 MOLEX PACKAGING SPECIFICATION N° : PP-98696-001



☒ INDICATION DIMENSIONS S.P.C DENOTES S.P.C DIMENSIONS	☒ 2
☒ INDICATION DIMENSIONS CRITIQUES DENOTES CRITICAL DIMENSIONS	☒ 0
● INDICATION DIMENSIONS FONCTIONNELLES DENOTES FUNCTIONAL DIMENSIONS	● 2
QUANTITE PAR FEUILLE INDIVIDUELLE QUANTITY PER INDIVIDUAL SHEET	

•Numéro de la cavité hauteur 15 ±0.05 en retrait de la face 0.15 ±0.05.
 •Cavity number height 15 ±0.05 in recess of the face 0.15 ±0.05.

Revised Print per ISIR EC NO: G2005-0254 DRAWN/STICKEIR 2005/03/02 CHK/DPECHELLETTE 2005/03/02 APPR/BOUJHAN 2005/03/04	QUALITY SYMBOLS ▽ 40 ▽ 40	GENERAL TOLERANCES (UNLESS SPECIFIED)		DIMENSION STYLE		SCALE	DESIGN UNITS	FIRST ANGLE PROJECTION
		mm	INCH	MM ONLY	METRIC	5:1		
DRAWN BY		DATE		TITLE		2 WAY HOUSING CRASH SENSOR UNSEALED VERSION		
CHECKED BY		DATE		PPOZZO 2001/12/20		MOLEX MOLEX INCORPORATED		
APPROVED BY		DATE		LSTICKEI 2001/12/20		DOCUMENT NO. SD-98696-003		
MATERIAL NO.		986961002		SHEET NO.		1 OF 1		
DRAFT WHERE APPLICABLE MUST REMAIN WITHIN DIMENSIONS								
THIS DRAWING CONTAINS INFORMATION THAT IS PROPRIETARY TO MOLEX INCORPORATED AND SHOULD NOT BE USED WITHOUT WRITTEN PERMISSION								