

Light is OSRAM

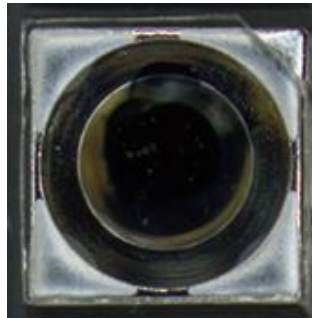
19.06.2018

OS-IN-2018-021 Lens Design Optimization for SFH 4780S

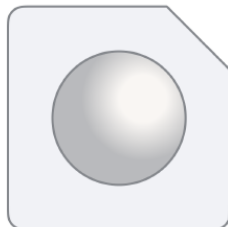
Objective Cathode mark is placed directly on the reflector. Lens cut is not needed.

Products affected

SFH 4780S

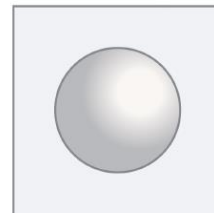


CURRENT



Lens cut used as Cathode mark

NEW Design



Cathode mark on reflector

Time Schedule

Datasheet drawing will be updated with the next review.
Products with new status will be available after CW 26

Assessment

Fit, function and reliability of the device is not affected.

Please direct your inquiry to your local Sales office.

OSRAM Opto Semiconductors GmbH

Head Office:

Leibnizstrasse 4
93055 Regensburg, Germany
Phone +49 941 850-5
Fax +49 941 850-1002
www.osram-os.com

Products Affected by Information Notification

Number: OS-IN-2018-021

Name: Lens Design Optimization for SFH 4780S

Release Date: 6/19/2018

Implementation Date: 6/30/2018

<i>Product</i>	<i>QNumber</i>	<i>QNumber Description</i>	<i>Part Number</i>
SFH 4780S	Q65111A6054	SFH 4780S	SFH 4780S