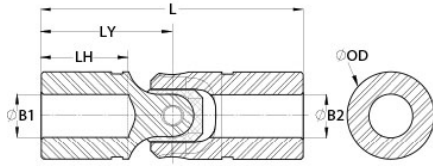




## US24-14-8-SS

Ruland US24-14-8-SS, 7/8" x 1/2" Single Universal Joint, Friction Bearing, Stainless Steel, 1.495" OD, 4.250" Length



### Description

Ruland US24-14-8-SS is a single cardan friction bearing universal joint with 0.8750" x 0.5000" bores, 1.495" OD, and 4.250" length. It is ideal for applications with space constraints and has higher torque capacity than equivalently sized double universal joints. This plain bearing universal joint is comprised of pins and blocks that are precision machined, selectively heat treated, and ground for high strength, accuracy, and wear resistance. The combination of these components with precision ground and hardened yoke ears allow for a longer lifespan, increased performance in demanding applications, and greater angular misalignment of up to 45° when compared to commodity style single universal joints. US24-14-8-SS is made from high grade stainless steel for increased corrosion resistance. It can be combined with boot UBOOT24/38-NI-KIT to protect the joint from unwanted contaminants such as dust or water and self lubricate reducing maintenance time. This single cardan universal joint is manufactured in the USA by Belden Universal for strict control of processes.

### Product Specifications

<b>Bore (B1)</b>	0.8750 in	<b>Small Bore (B2)</b>	0.5000 in
<b>B1 Max Shaft Penetration</b>	1.400 in	<b>B2 Max Shaft Penetration</b>	1.400 in
<b>Joint Outer Diameter (OD)</b>	1.495 in	<b>Bore Tolerance</b>	+0.0010 in / -0.0000 in
<b>Length (L)</b>	4.250 in	<b>Yoke Length (LY)</b>	2.125 in
<b>Hub Depth (LH)</b>	1.400 in	<b>Peak Torque</b>	7,250 in-lb
<b>Rated Torque</b>	1,450 in-lb	<b>Max Operating Angle</b>	45°
<b>Material Specification</b>	Stainless Steel	<b>Manufacturer</b>	Belden Universal
<b>Country of Origin</b>	USA	<b>Weight (lbs)</b>	1.516000
<b>Recommended Lubricant</b>	LUBRIPLATE No. 1200-2	<b>Matching Boot Cover</b>	<a href="#">UBOOT24/38-NI-KIT</a>
<b>UPC</b>	63452937068	<b>Tariff Code</b>	8483.60.4000
<b>UNSPC</b>	25173810		
<b>Note 1</b>	Performance ratings are for guidance only. The user must determine suitability for a particular application.		
<b>Prop 65</b>	⚠️ <b>WARNING</b> This product can expose you to the chemical Nickel (metallic), known to the State of California to cause cancer. For more information go to <a href="http://www.P65Warnings.ca.gov">www.P65Warnings.ca.gov</a> .		