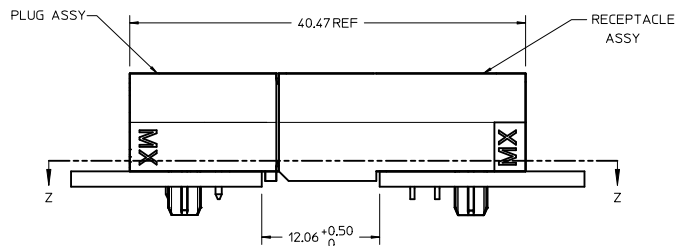
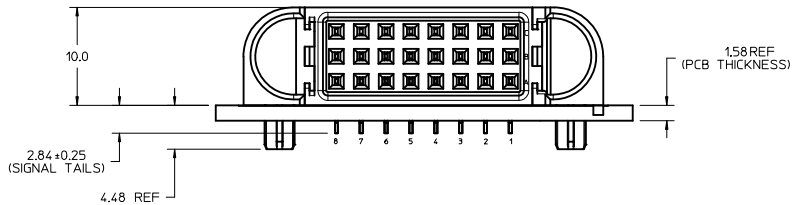
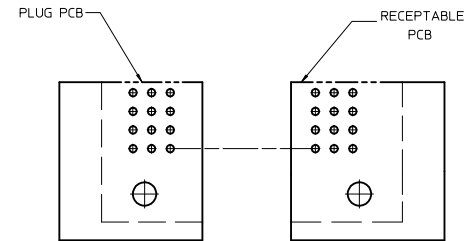


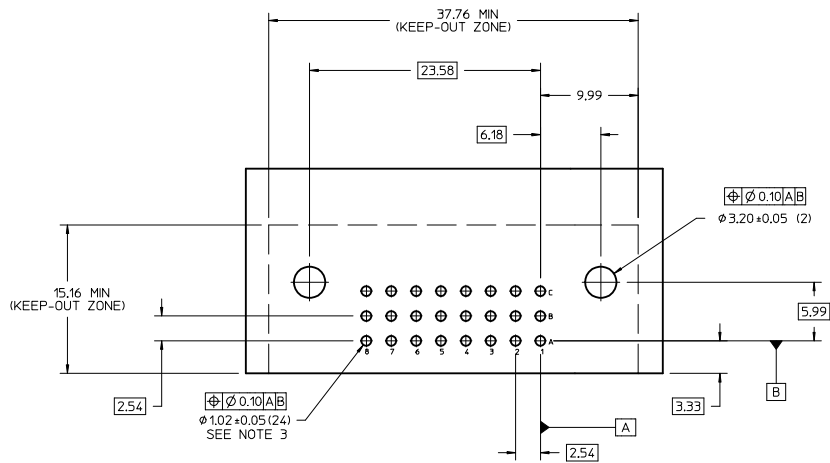
P/N: 46436-1444



MATED PROFILE



PARTIAL OF Z-Z
(CKTS ARE ALIGNED)

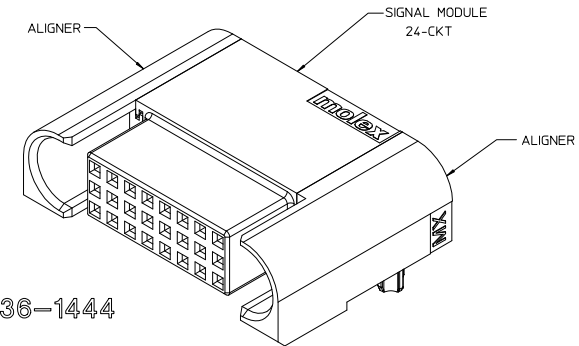
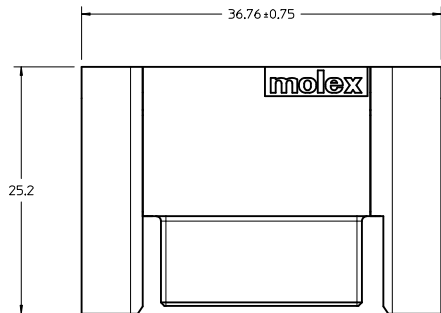


RECOMMENDED PCB LAYOUT AND KEEP-OUT ZONE

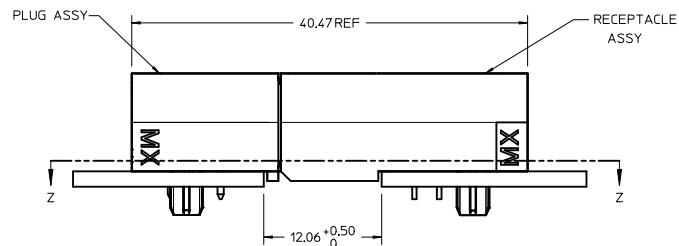
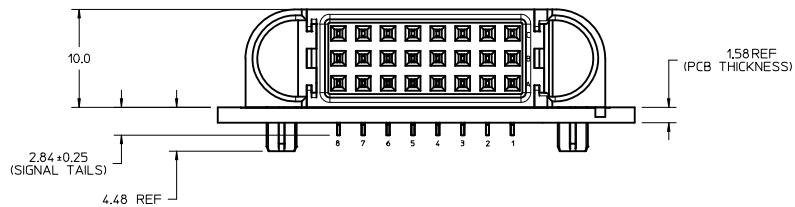
NOTES:

- MATERIAL:
 - HOUSINGS: LCP UL94 V-0, COLOR: BLACK
 - TERMINALS: COPPER ALLOY
 - PLATING: 1.27 MICROMETER (50 MICROINCH) NICKEL OVERALL WITH 2.54 MICROMETER (100 MICROINCH) SELECTIVE TIN ON TAILS AND 0.762 MICROMETER (30 MICROINCH) SELECTIVE GOLD ON CONTACT AREA
- PACKAGING: ASSEMBLIES TO BE TRAY PACKED PER PACKAGING SPEC: TBD
- PLATED THRU HOLE SIZE, REFER TO PS-46436-100 FOR DETAILS
- PRODUCT SPEC: PS-46436-100
- APPLICATION SPEC: AS-46436-100
- PRODUCT TO MEET RoHS REQUIREMENTS
- ASSEMBLY MATES WITH PLUG ASSEMBLY P/N 46437-1444
- TAIL DESIGN: SOLDER TAIL

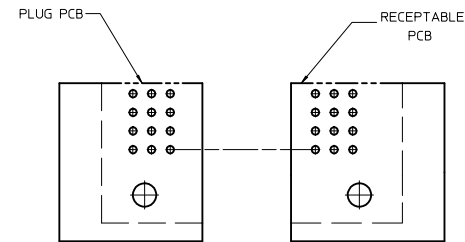
INITIAL RELEASE IEC NO. UCFP2013-1554 DRAWINGS CHYK/BPI/SZCZOR 2013/02/07 APPR:APATEL 2013/02/20	QUALITY SYMBOLS	GENERAL TOLERANCES (UNLESS SPECIFIED)	DIMENSION STYLE	SCALE	DESIGN UNITS	THIRD ANGLE PROJECTION
	▽=0	mm INCH	MM ONLY	4:1	METRIC	☉
	▽=0	4 PLACES ± ---	DRAWN BY	DATE	TITLE	
	▽=0	3 PLACES ± ---	GES 2012/10/23	R/A RECEPTACLE ASSY		
	2 PLACES ± 0.13	CHECKED BY	DATE	G-24S-G		
	1 PLACE ± 0.25	BPI/SZCZOR 2013/02/07	TEN60 POWER FAMILY			
	0 PLACE ± ---	APPROVED BY	DATE	molex		
		APATEL 2013/02/20	MATERIAL NO.		DOCUMENT NO.	SHEET NO.
			46436-1444		SD-46436-1444	1 OF 1
		DRAFT WHERE APPLICABLE MUST REMAIN WITHIN DIMENSIONS	THIS DRAWING CONTAINS INFORMATION THAT IS PROPRIETARY TO MOLEX INCORPORATED AND SHOULD NOT BE USED WITHOUT WRITTEN PERMISSION			



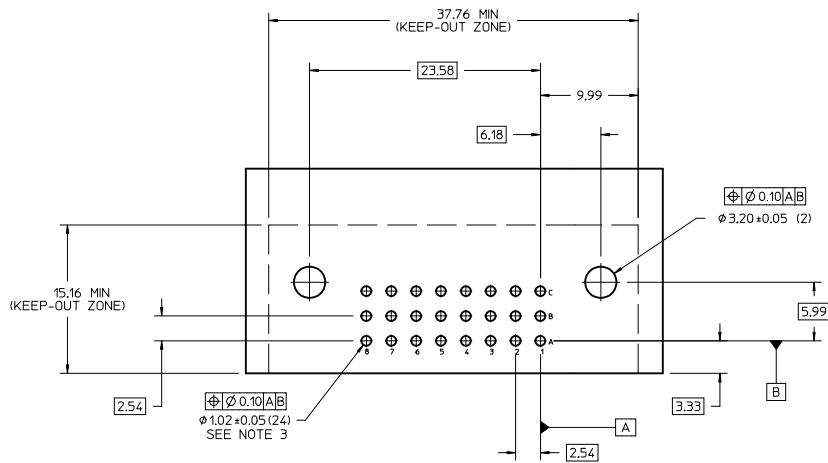
P/N: 46436-1444



MATED PROFILE



PARTIAL OF Z-Z
(CKTS ARE ALIGNED)

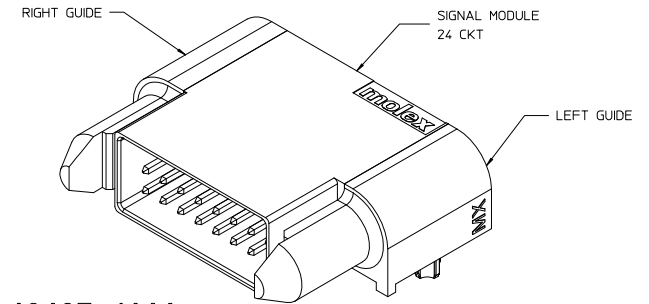
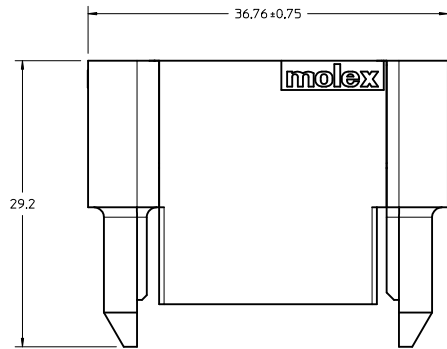


RECOMMENDED PCB LAYOUT AND KEEP-OUT ZONE

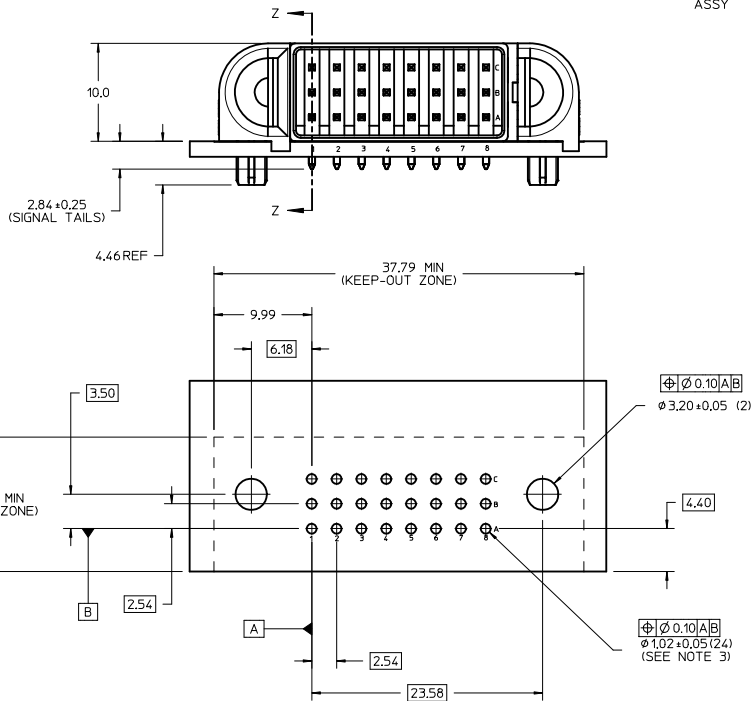
NOTES:

- MATERIAL:
 - HOUSINGS: LCP UL94 V-0, COLOR: BLACK
 - TERMINALS: COPPER ALLOY
 - PLATING: 1.27 MICROMETER (50 MICROINCH) NICKEL OVERALL WITH 2.54 MICROMETER (100 MICROINCH) SELECTIVE TIN ON TAILS AND 0.762 MICROMETER (30 MICROINCH) SELECTIVE GOLD ON CONTACT AREA
- PACKAGING: ASSEMBLIES TO BE TRAY PACKED PER PACKAGING SPEC: TBD
- PLATED THRU HOLE SIZE, REFER TO PS-46436-100 FOR DETAILS
- PRODUCT SPEC: PS-46436-100
- APPLICATION SPEC: AS-46436-100
- PRODUCT TO MEET RoHS REQUIREMENTS
- ASSEMBLY MATES WITH PLUG ASSEMBLY P/N 46437-1444
- TAIL DESIGN: SOLDER TAIL

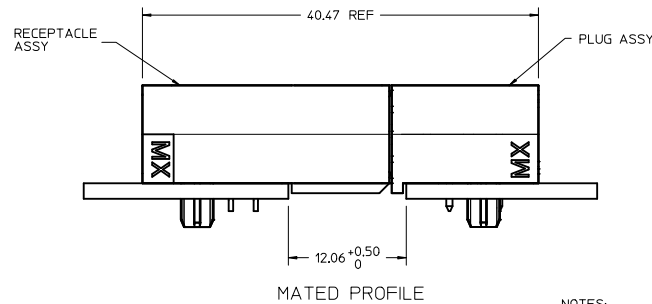
INITIAL RELEASE IEC NO. UCF2013-1554 DRAWINGS CHYD/BPI/SZCZOR 2013/02/07 APPR:APATEL 2013/02/20	QUALITY SYMBOLS	GENERAL TOLERANCES (UNLESS SPECIFIED)	DIMENSION STYLE	SCALE	DESIGN UNITS	THIRD ANGLE PROJECTION	
	▽=0	mm INCH	MM ONLY	4:1	METRIC	☉	
	▽=0	4 PLACES ± ---	DRAWN BY	DATE	TITLE		
	▽=0	3 PLACES ± ---	GES 2012/10/23	R/A RECEPTACLE ASSY			
	2 PLACES ± 0.13	CHECKED BY	DATE	G-24S-G			
	1 PLACE ± 0.25	BPI/SZCZOR 2013/02/07	TEN60 POWER FAMILY				
	0 PLACE ± ---	APPROVED BY	DATE	molex			
		APATEL 2013/02/20	MATERIAL NO.		DOCUMENT NO.	SHEET NO.	
			46436-1444		SD-46436-1444	1 OF 1	
			THIS DRAWING CONTAINS INFORMATION THAT IS PROPRIETARY TO MOLEX INCORPORATED AND SHOULD NOT BE USED WITHOUT WRITTEN PERMISSION				



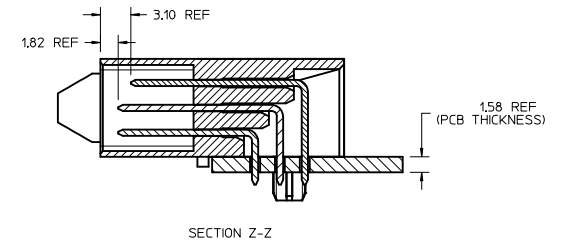
P/N: 46437-1444



RECOMMENDED PCB LAYOUT AND KEEP-OUT ZONE



MATED PROFILE

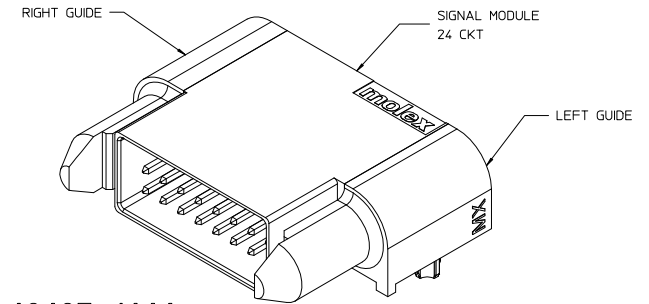
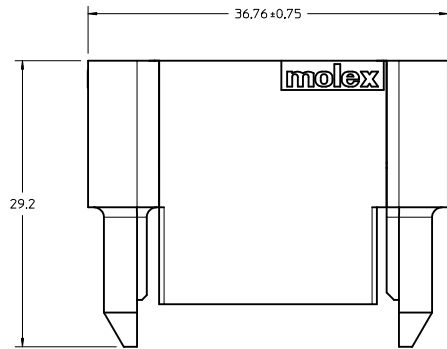


SECTION Z-Z

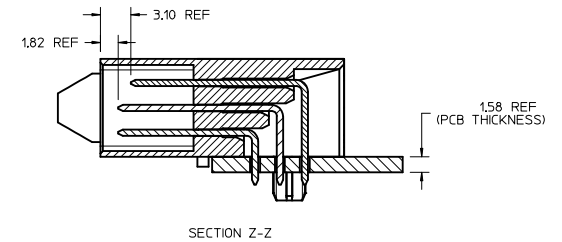
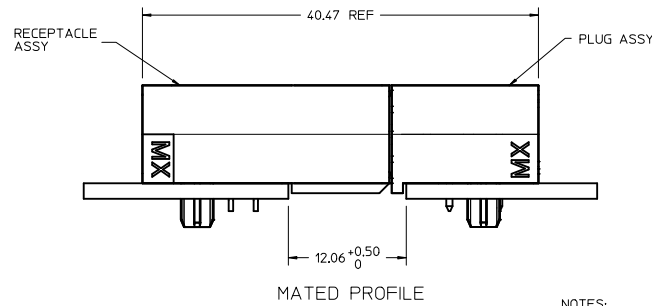
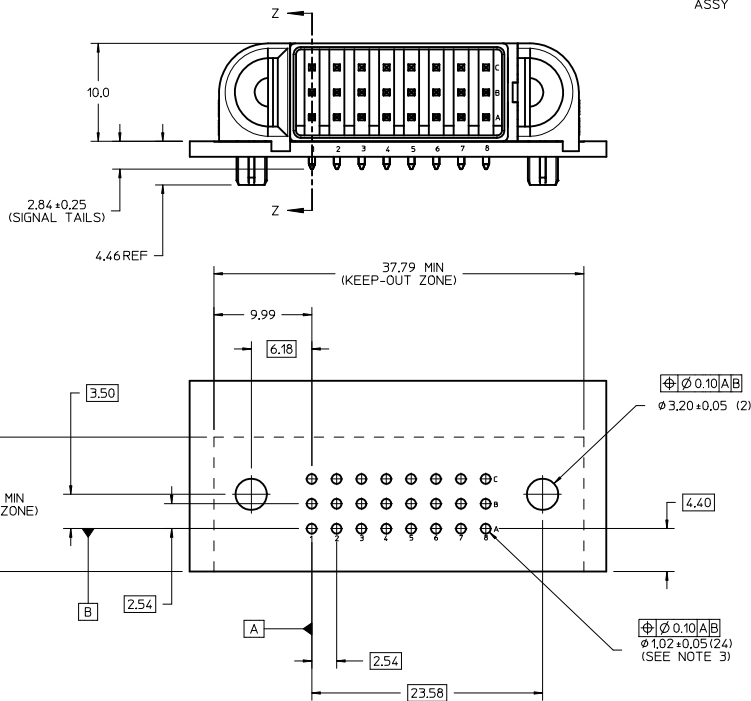
NOTES:

- MATERIAL:
 - HOUSINGS: LCP UL94, V-0, COLOR : BLACK
 - TERMINALS: HIGH CONDUCTIVITY COPPER ALLOY
 - PLATING: 1.27 MICROMETER (50 MICROINCH) NICKEL OVERALL WITH 2.54 MICROMETER (100 MICROINCH) SELECTIVE TIN ON TAILS AND 0.762 MICROMETER (30 MICROINCH) SELECTIVE GOLD ON CONTACT AREA
- PACKAGING: ASSEMBLIES TO BE TRAY PACKED PER PACKAGING SPEC: TBD
- PLATED THRU HOLE SIZE, REFER TO PS-46436-100 FOR DETAILS
- PRODUCT SPEC: PS-46436-100
- APPLICATION SPEC: AS-46436-100
- PRODUCT TO MEET RoHS REQUIREMENTS
- ASSEMBLY MATES TO MOLEX RECEPTACLE ASSEMBLY 46436-1444
- TAIL DESIGN: SOLDER TAIL

INITIAL RELEASE IEC NO. UCP 2013-1554 DRAWINGS CHYK/BPI/SZCZOR 2013/02/07 APPR: APATEL 2013/02/20	QUALITY SYMBOLS ▽=0 ▽=0 ▽=0	GENERAL TOLERANCES (UNLESS SPECIFIED) mm INCH		DIMENSION STYLE MM ONLY		SCALE 4:1	DESIGN UNITS METRIC	THIRD ANGLE PROJECTION
		4 PLACES ± --- ± --- 3 PLACES ± --- ± --- 2 PLACES ± 0.13 ± --- 1 PLACE ± 0.25 ± --- 0 PLACE ± --- ± ---	DRAWN BY GES 2012/10/23 DATE	CHECKED BY BPI/SZCZOR 2013/02/07 DATE	APPROVED BY APATEL 2013/02/20 DATE	TITLE R/A PLUG ASSY G-24S-G TEN60 POWER FAMILY		MATERIAL NO. 46437-1444
ANGLULAR ± 1/2° DRAFT WHERE APPLICABLE MUST REMAIN WITHIN DIMENSIONS		THIS DRAWING CONTAINS INFORMATION THAT IS PROPRIETARY TO MOLEX INCORPORATED AND SHOULD NOT BE USED WITHOUT WRITTEN PERMISSION						



P/N: 46437-1444



NOTES:

- MATERIAL:
 - HOUSINGS: LCP UL94, V-0, COLOR : BLACK
 - TERMINALS: HIGH CONDUCTIVITY COPPER ALLOY
 - PLATING: 1.27 MICROMETER (50 MICROINCH) NICKEL OVERALL WITH 2.54 MICROMETER (100 MICROINCH) SELECTIVE TIN ON TAILS AND 0.762 MICROMETER (30 MICROINCH) SELECTIVE GOLD ON CONTACT AREA
- PACKAGING: ASSEMBLIES TO BE TRAY PACKED PER PACKAGING SPEC: TBD
- PLATED THRU HOLE SIZE, REFER TO PS-46436-100 FOR DETAILS
- PRODUCT SPEC: PS-46436-100
- APPLICATION SPEC: AS-46436-100
- PRODUCT TO MEET RoHS REQUIREMENTS
- ASSEMBLY MATES TO MOLEX RECEPTACLE ASSEMBLY 46436-1444
- TAIL DESIGN: SOLDER TAIL

RECOMMENDED PCB LAYOUT AND KEEP-OUT ZONE

INITIAL RELEASE IEC NO. UCP 2013-1554 DRAWN BY 2012/10/25 CHYK/BPI/SZCZOR 2013/02/07 APPR: APATEL 2013/02/20	QUALITY SYMBOLS ▽=0 ▽=0 ▽=0	GENERAL TOLERANCES (UNLESS SPECIFIED) mm INCH		DIMENSION STYLE MM ONLY	SCALE 4:1	DESIGN UNITS METRIC	THIRD ANGLE PROJECTION
		4 PLACES ± --- ± --- 3 PLACES ± --- ± --- 2 PLACES ± 0.13 ± --- 1 PLACE ± 0.25 ± --- 0 PLACE ± --- ± ---	DRAWN BY GES DATE 2012/10/23	CHECKED BY BPI/SZCZOR DATE 2013/02/07	APPROVED BY APATEL DATE 2013/02/20	MATERIAL NO. 46437-1444	
ANGLULAR ± 1/2° DRAFT WHERE APPLICABLE MUST REMAIN WITHIN DIMENSIONS		R/A PLUG ASSY G-24S-G TEN60 POWER FAMILY molex					