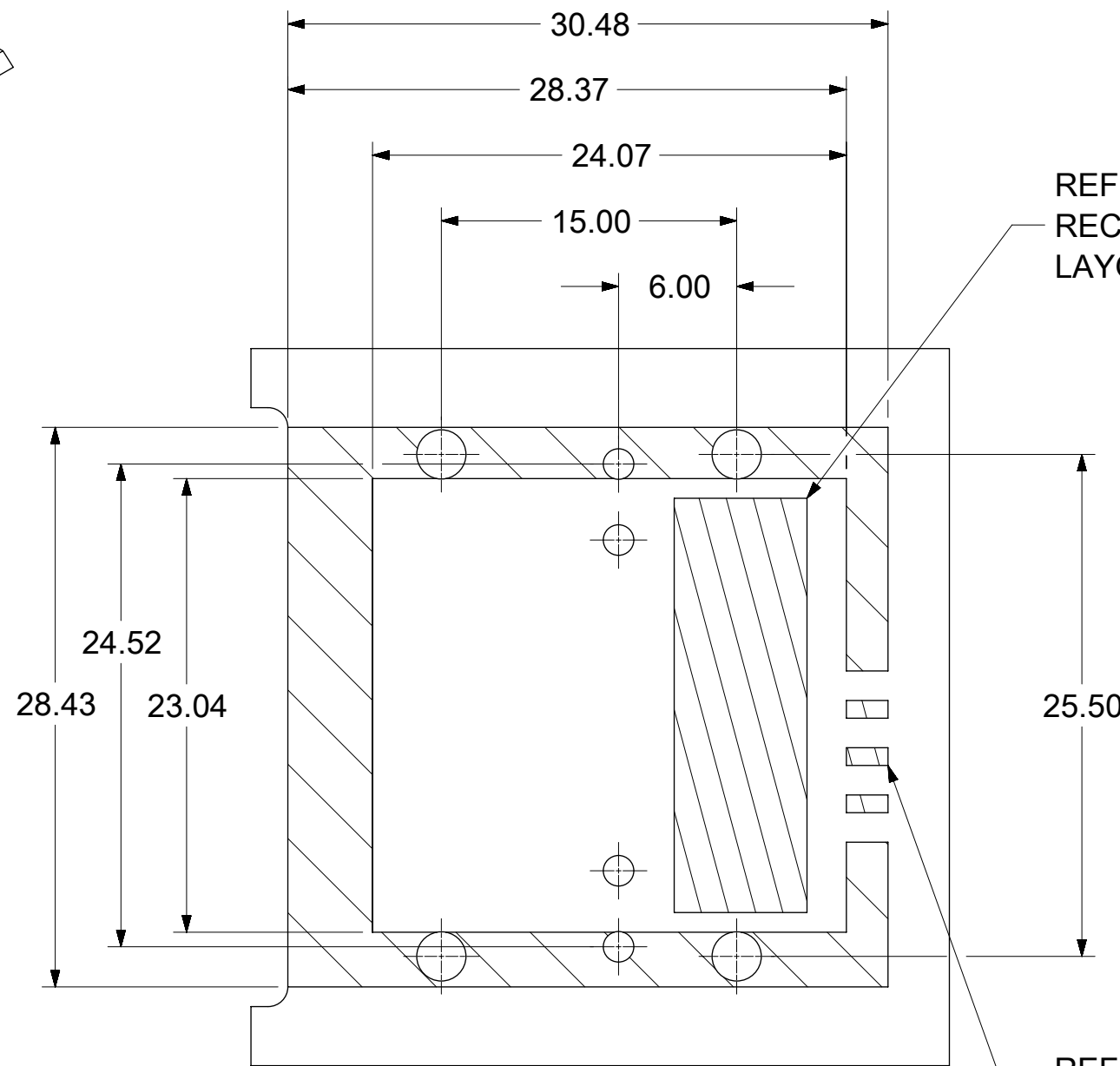
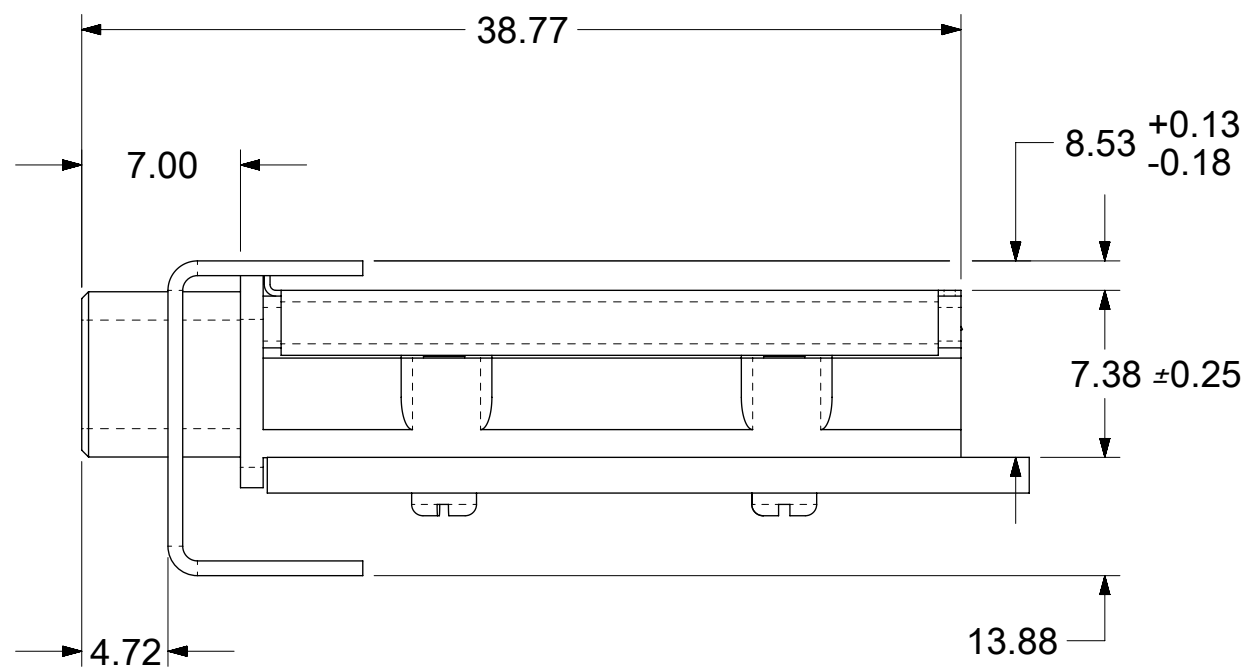
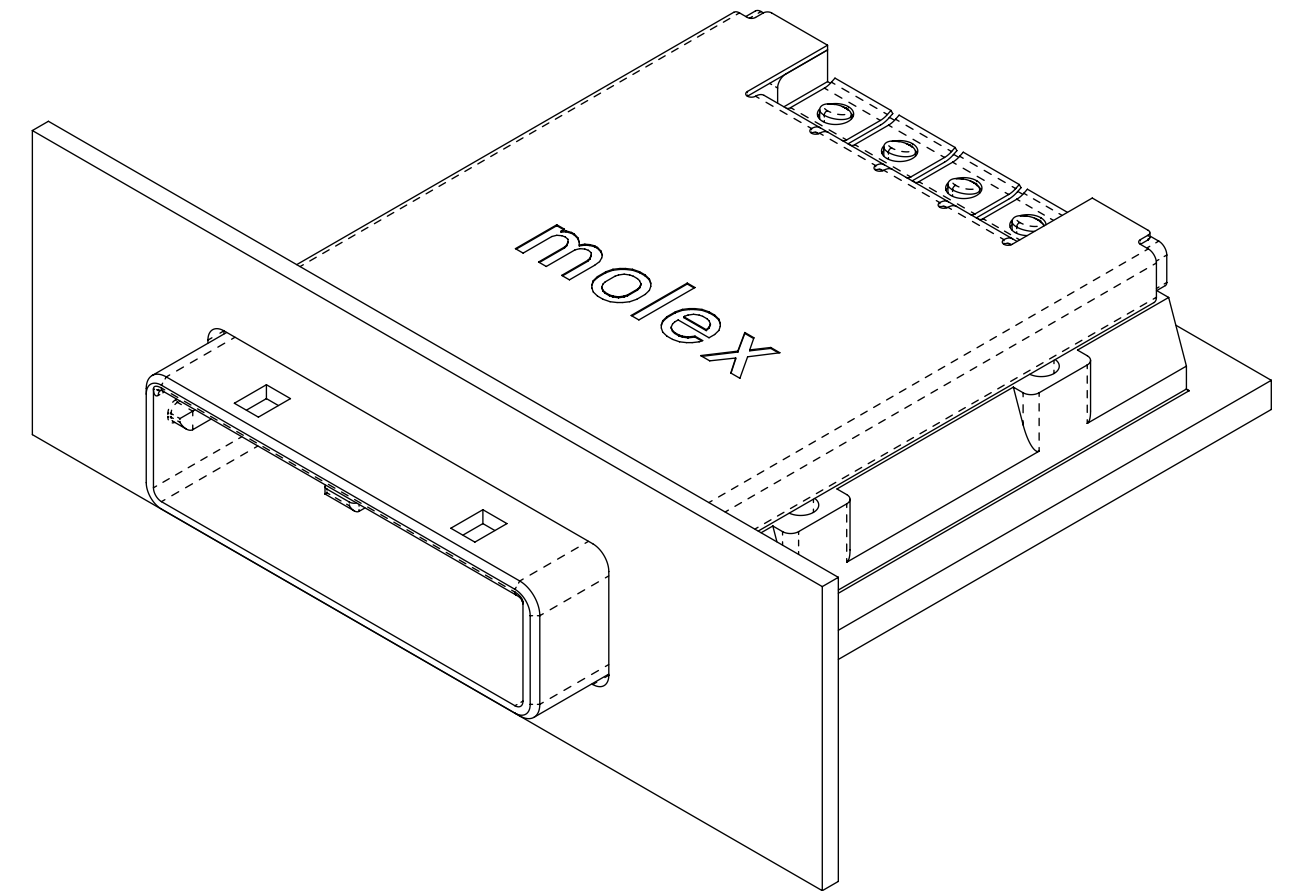
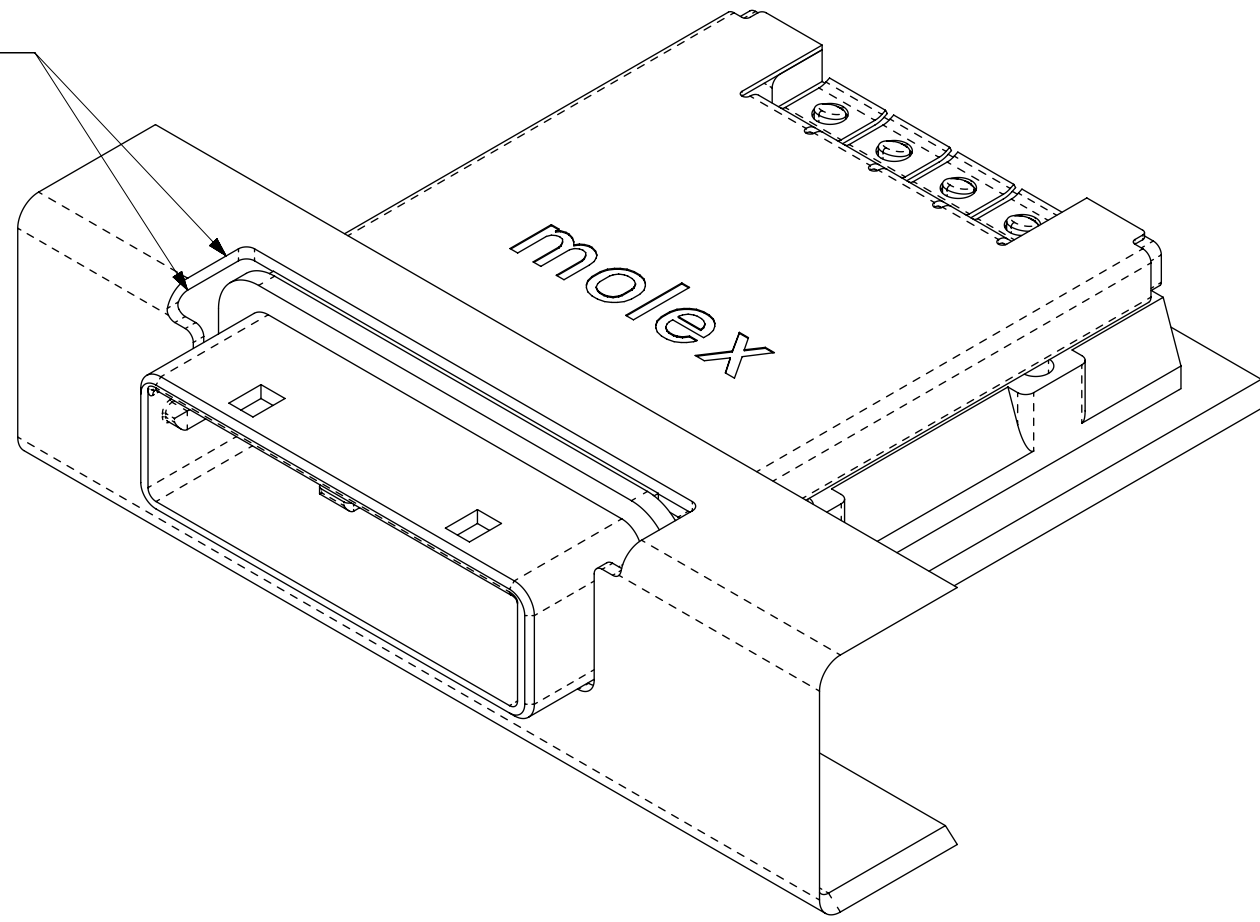


- NOTES:**
1. REF. PCI EXPRESS CARD ELECTROMECHANICAL SPECIFICATION, REV 1.0a FOR IO BRACKET WINDOW LOCATION.
 2. PCB AND IO BRACKET SHOWN FOR REFERENCE ONLY.
 3. REFER TO SHEET 2 FOR ATCA GUIDE HOUSING ASSEMBLY.
 4. GUIDE HOUSING MOUNTING THREAD=M2 X 0.4, SEE SHEET 3 FOR SCREW LENGTH + TORQUE.
 5. PCB NOTCH IS SHOWN FOR PCI COMPLIANT BOARD.
 6. NO RoHS EXEMPTIONS
 7. PLATE GROUND PAD WITH EMERSION SILVER OR GOLD.
 8. MATES WITH MOLEX 4X CABLE SERIES 74546-040X.
 9. GUIDE HOUSING PEGS FOR ALIGNMENT ONLY, DO NOT SOLDER.

iPass™ is a trademark of Molex.

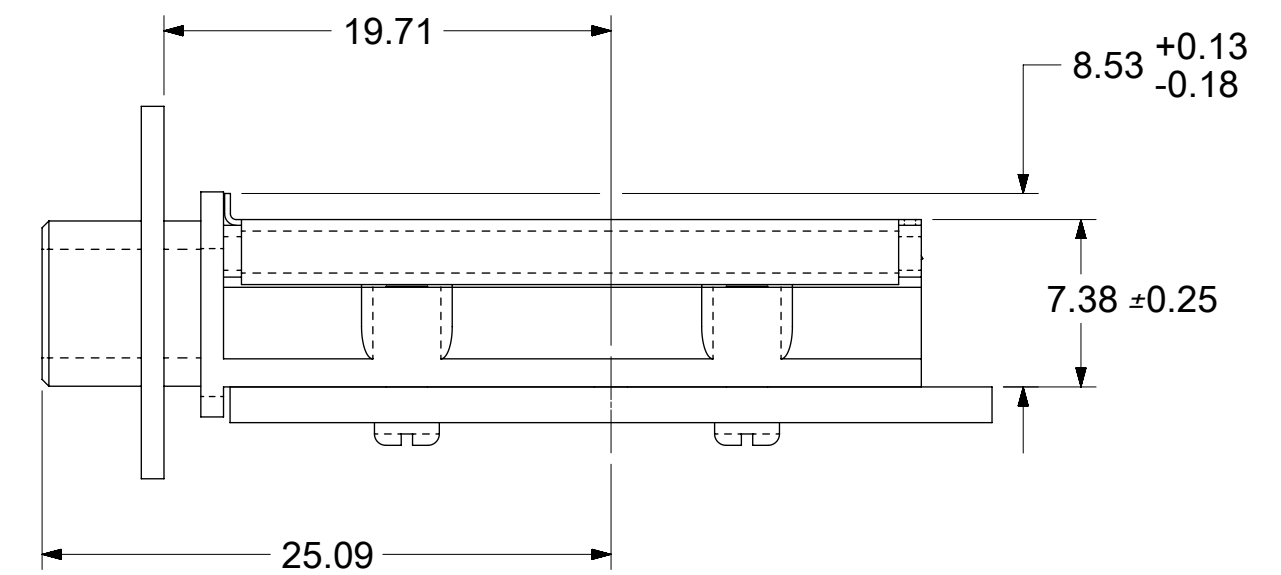
SYMBOLS		THIS DRAWING CONTAINS INFORMATION THAT IS PROPRIETARY TO MOLEX ELECTRONIC TECHNOLOGIES, LLC AND SHOULD NOT BE USED WITHOUT WRITTEN PERMISSION			
▽ = 0	mm	SCALE	3:1		
▽ = 0	GENERAL TOLERANCES (UNLESS SPECIFIED)		EC NO: 610421		IPASS X4 EMI GUIDE HOUSING ASSEMBLY W/ KEY
▽ = 0	ANGULAR TOL ± 0.5°		DRWN: PMAHADEVAPPA 2018/12/17		
▽ = 0	4 PLACES ±		CHK'D: VK10 2019/01/15		PRODUCT CUSTOMER DRAWING
▽ = 0	3 PLACES ±		APPR: RCHEN08 2019/01/15		
▽ = 0	2 PLACES ± 0.05		INITIAL REVISION:		DOCUMENT NUMBER 745400401
▽ = 0	1 PLACE ± 0.1		DRWN: PMAHADEVAPPA 2018/12/17		
▽ = 0	0 PLACES ±		APPR: RCHEN08 2019/01/15		DOC TYPE
▽ = 0	DRAFT WHERE APPLICABLE MUST REMAIN WITHIN DIMENSIONS		THIRD ANGLE PROJECTION	DRAWING	DOC PART
▽ = 0			C-SIZE	SERIES	REVISION
			74540	MATERIAL NUMBER	CUSTOMER
			SEE P/N TABLE	SHEET NUMBER	
				1 OF 4	

GASKETS NOT SHOWN FOR CLARITY

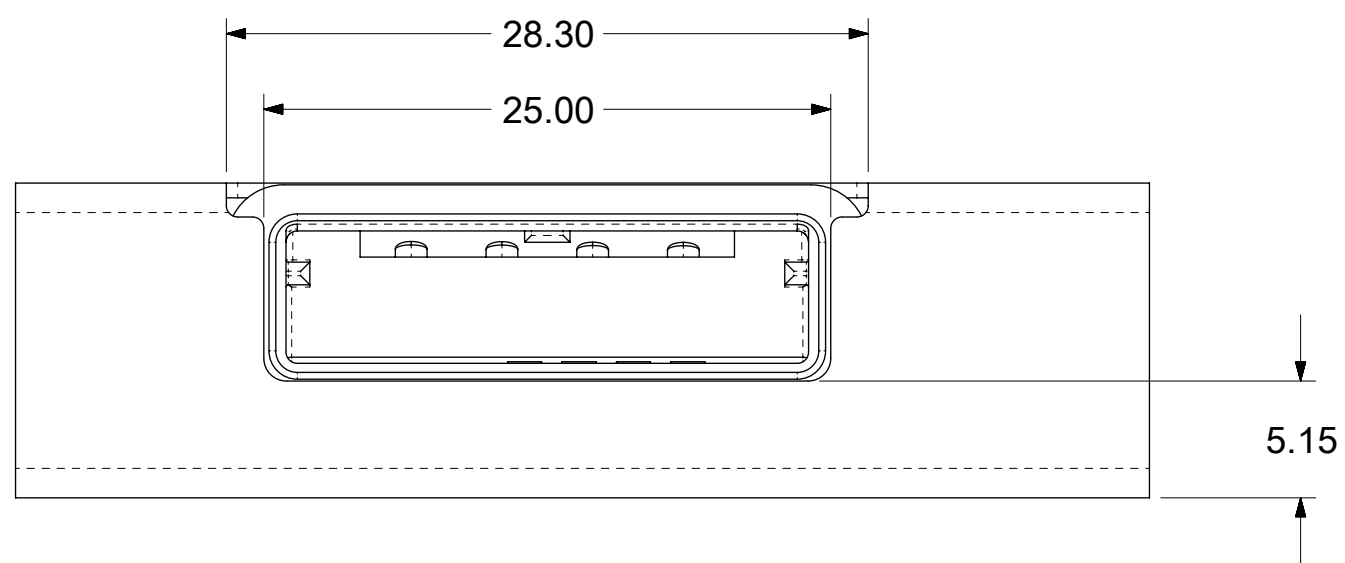


REF. SD-75586-001 FOR RECEPTACLE AND PCB LAYOUT INFORMATION

REF. SHEET 3 FOR GROUND PAD ALLEY LAYOUT INFORMATION



PCIe X4 GUIDE HOUSING ASSEMBLY

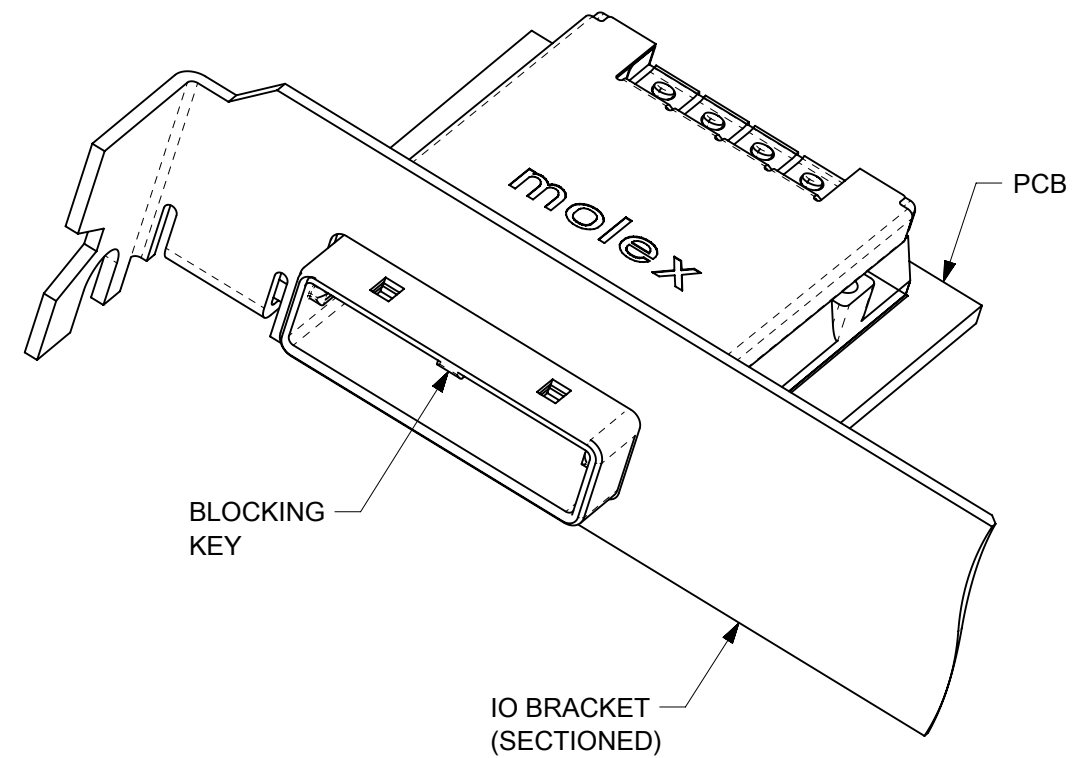
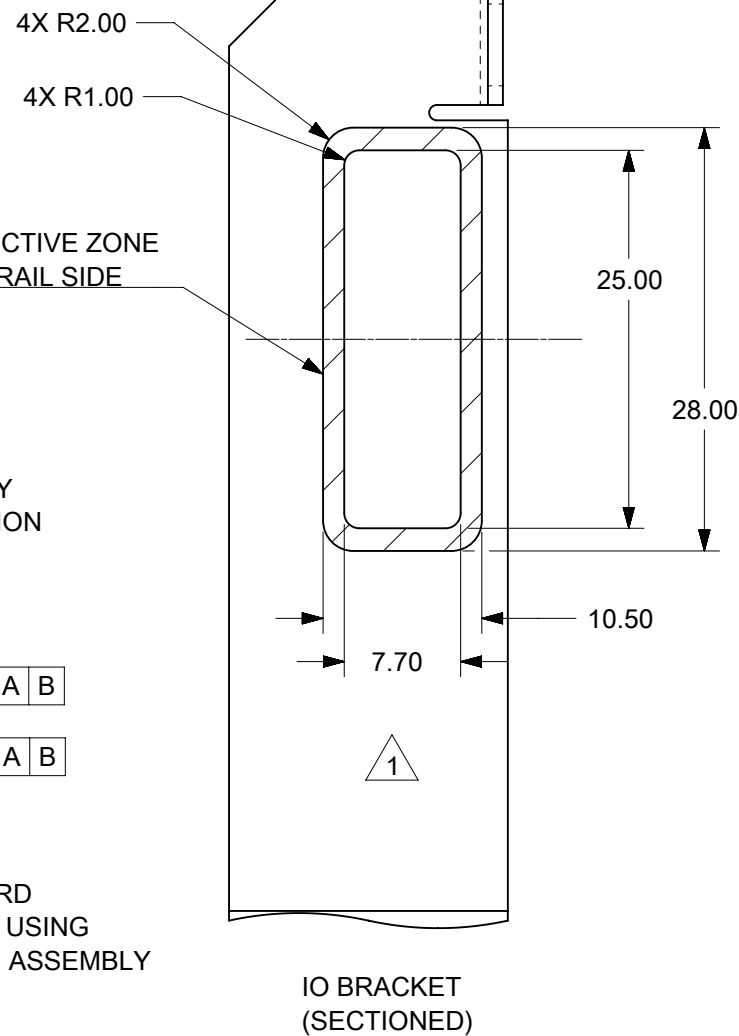
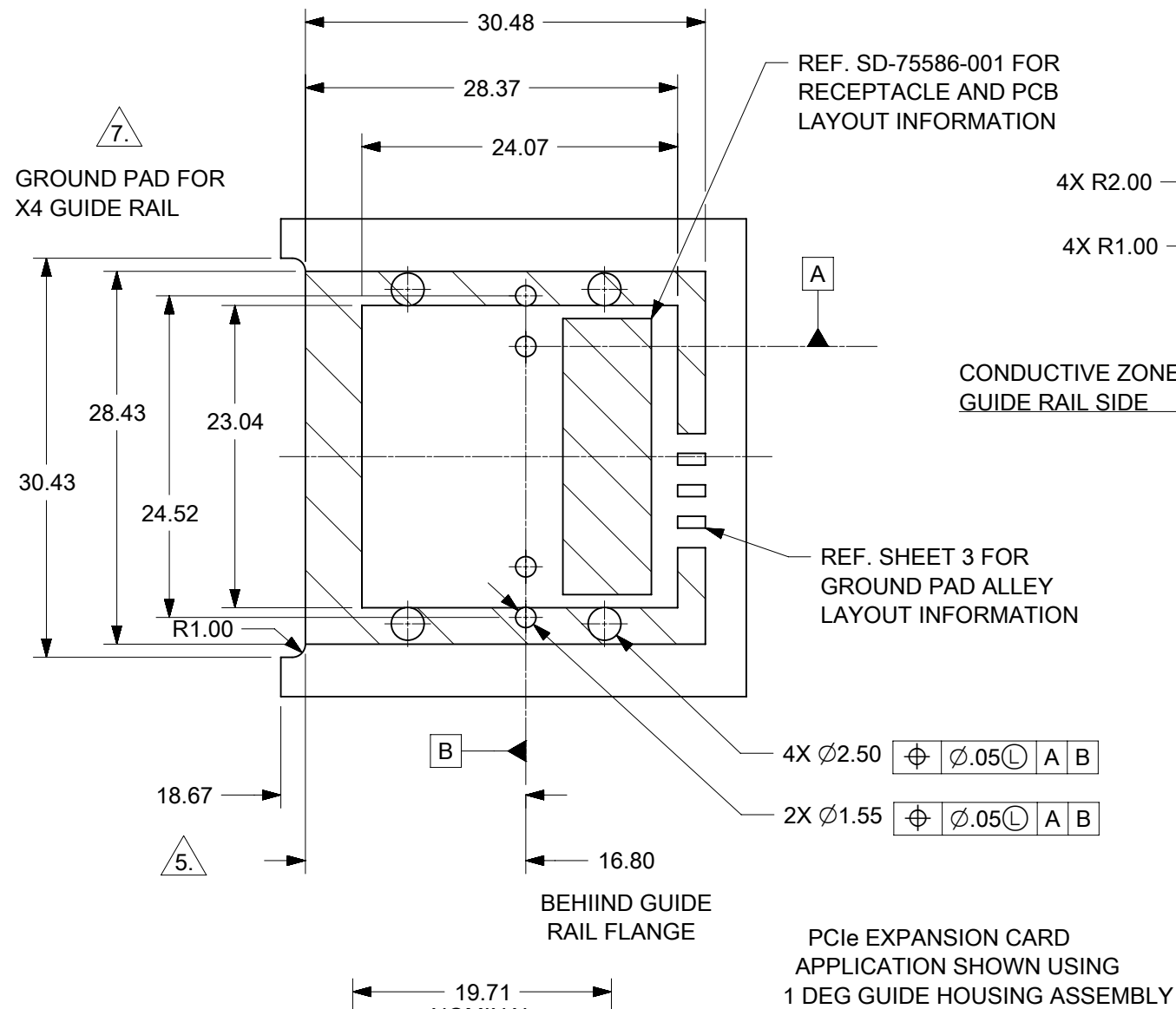


ADVANCED TCA APPLICATION SHOWN USING 0 DEGREE GUIDE HOUSING ASSEMBLY

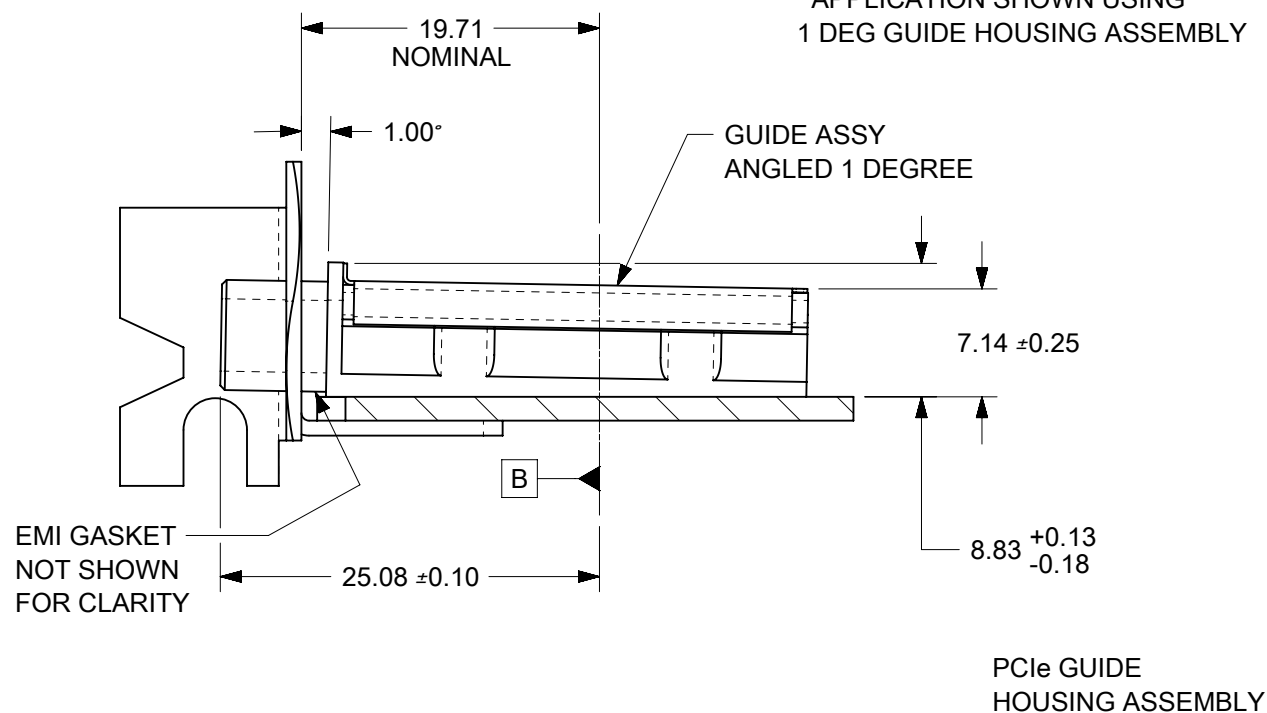
STANDARD APPLICATION SHOWN USING 0 DEGREE GUIDE HOUSING ASSEMBLY

iPass™ is a trademark of Molex.

SYMBOLS		THIS DRAWING CONTAINS INFORMATION THAT IS PROPRIETARY TO MOLEX ELECTRONIC TECHNOLOGIES, LLC AND SHOULD NOT BE USED WITHOUT WRITTEN PERMISSION			
DIMENSION UNITS: mm SCALE: 3:1		CURRENT REV DESC: SEE REVISION TABLE			
GENERAL TOLERANCES (UNLESS SPECIFIED) ANGULAR TOL ± 0.5°		EC NO: 610421 DRWN: PMAHADEVAPPA 2018/12/17 CHK'D: VK10 2019/01/15 APPR: RCHEN08 2019/01/15		PRODUCT CUSTOMER DRAWING	
4 PLACES ± 3 PLACES ± 2 PLACES ± 0.05 1 PLACE ± 0.1 0 PLACES ±		INITIAL REVISION: DRWN: PMAHADEVAPPA 2018/12/17 APPR: RCHEN08 2019/01/15		DOCUMENT NUMBER	DOC TYPE DOC PART REVISION
DRAFT WHERE APPLICABLE MUST REMAIN WITHIN DIMENSIONS		THIRD ANGLE PROJECTION	DRAWING	SERIES	MATERIAL NUMBER CUSTOMER SHEET NUMBER
			C-SIZE	74540	745400401 PSD ASY J SEE P/N TABLE 2 OF 4



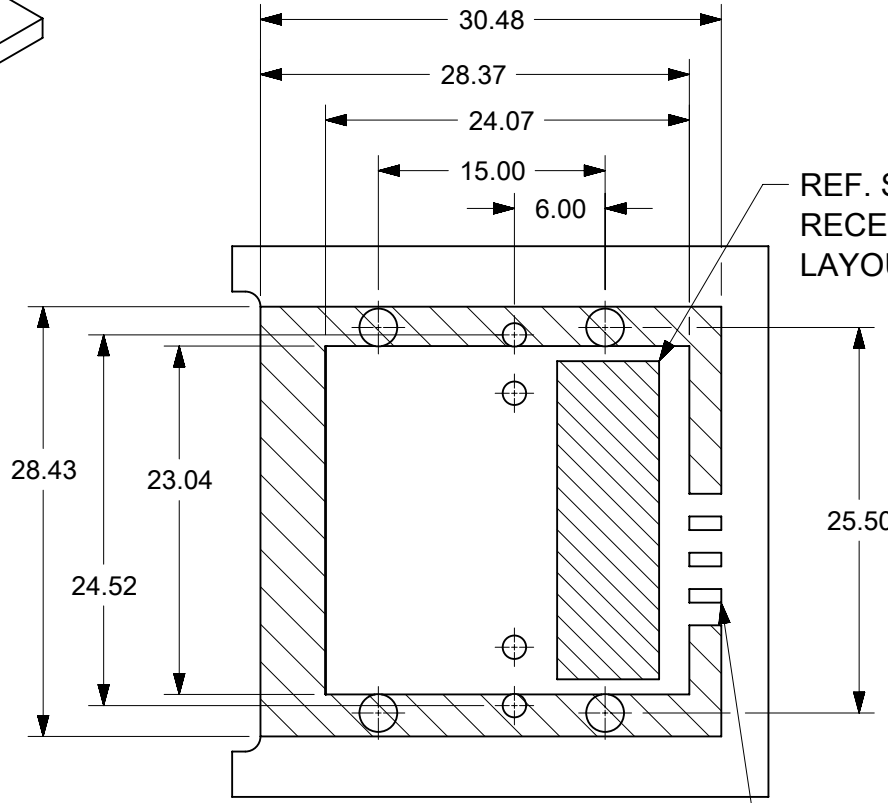
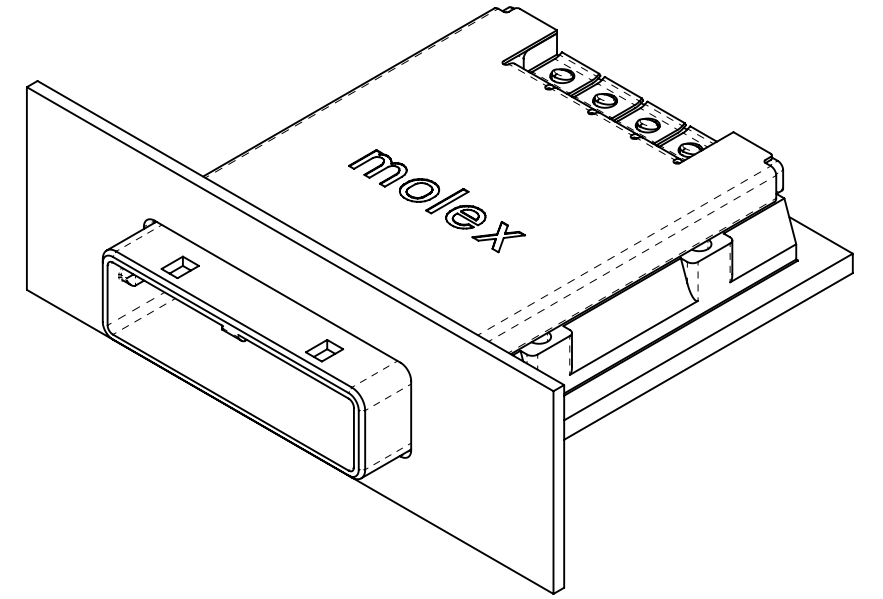
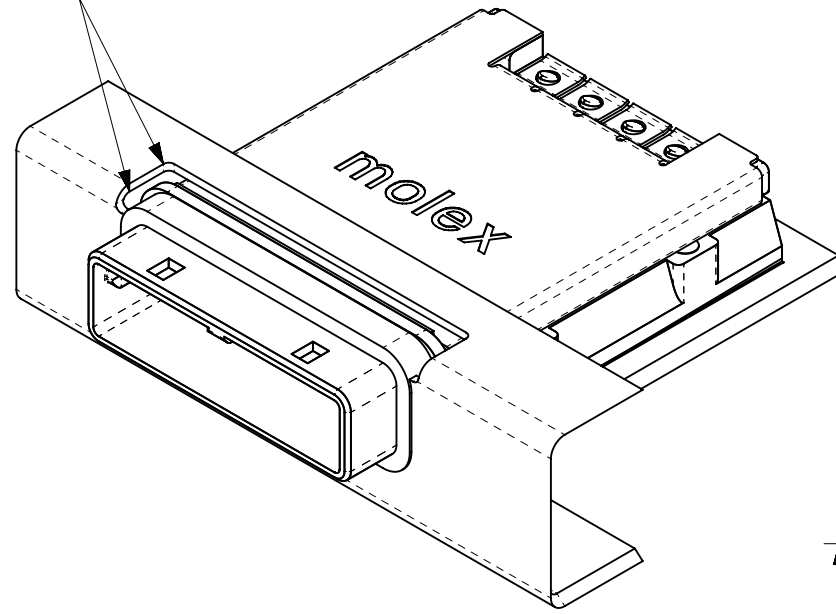
- NOTES:
- REF. PCI EXPRESS CARD ELECTROMECHANICAL SPECIFICATION, REV 1.0a FOR IO BRACKET WINDOW LOCATION.
 - PCB AND IO BRACKET SHOWN FOR REFERENCE ONLY.
 - REFER TO SHEET 2 FOR ATCA GUIDE HOUSING ASSEMBLY.
 - GUIDE HOUSING MOUNTING THREAD=M2 X 0.4, SEE SHEET 3 FOR SCREW LENGTH + TORQUE.
 - PCB NOTCH IS SHOWN FOR PCI COMPLIANT BOARD.
 - NO RoHS EXEMPTIONS
 - PLATE GROUND PAD WITH EMERSION SILVER OR GOLD.
 - MATES WITH MOLEX 4X CABLE SERIES 74546-040X.
 - GUIDE HOUSING PEGS FOR ALIGNMENT ONLY, DO NOT SOLDER.



iPass™ is a trademark of Molex.

THIS DRAWING CONTAINS INFORMATION THAT IS PROPRIETARY TO MOLEX ELECTRONIC TECHNOLOGIES, LLC AND SHOULD NOT BE USED WITHOUT WRITTEN PERMISSION									
DIMENSION UNITS		SCALE		CURRENT REV DESC:					
MM		2:1		EC NO: 620216 DRWN: AKUMAR19 2018/05/29 CHK'D: GGA 2019/07/09 APPR: GGA 2019/07/09 INITIAL REVISION: DRWN: SNAVARRO 2006/05/26 APPR: DDOYE 2006/05/25					
GENERAL TOLERANCES (UNLESS SPECIFIED)									
4 PLACES	±								
3 PLACES	±								
2 PLACES	±	0.05							
1 PLACE	±	0.1		PRODUCT CUSTOMER DRAWING DOCUMENT NUMBER: SD-74540-401 DOC TYPE: PSD DOC PART: 001 REVISION: J					
0 PLACES	±								
ANGULAR TOL		± 0.5°		MATERIAL NUMBER: SEE P/N TABLE CUSTOMER: GENERAL MARKET SHEET NUMBER: 1 OF 4					
DRAFT WHERE APPLICABLE MUST REMAIN WITHIN DIMENSIONS									
THIRD ANGLE PROJECTION		DRAWING		SERIES		MATERIAL NUMBER		CUSTOMER	
B-SIZE		74540		SEE P/N TABLE		GENERAL MARKET		1 OF 4	

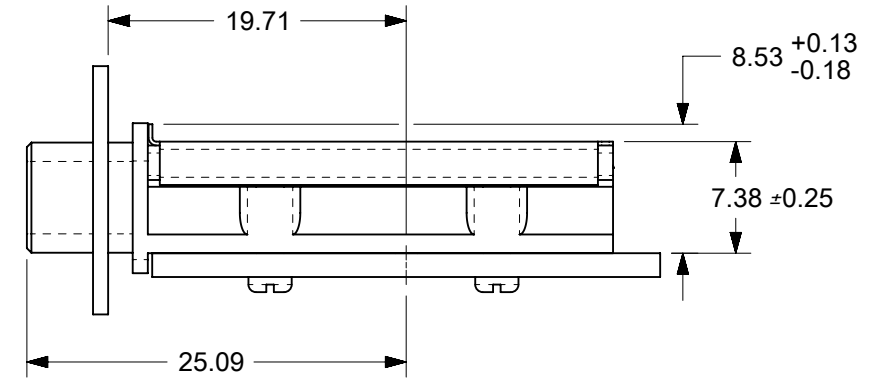
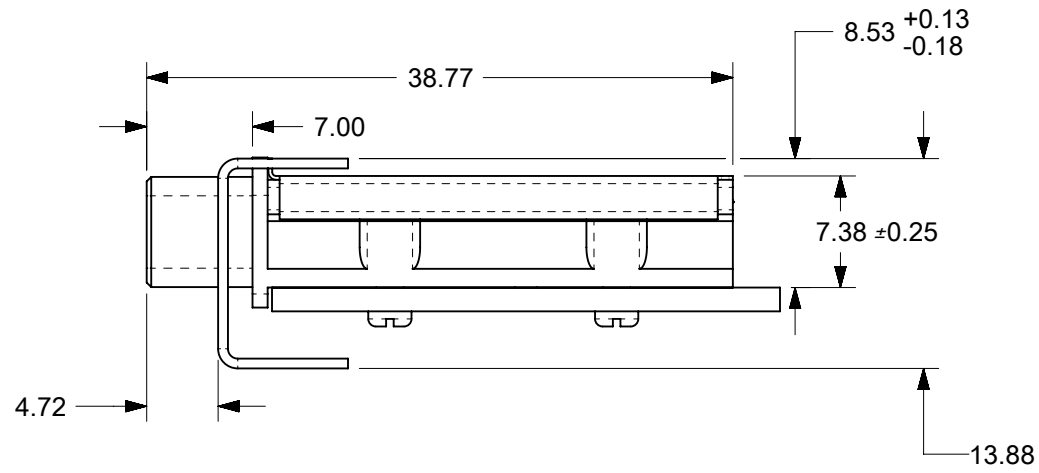
GASKETS NOT SHOWN FOR CLARITY



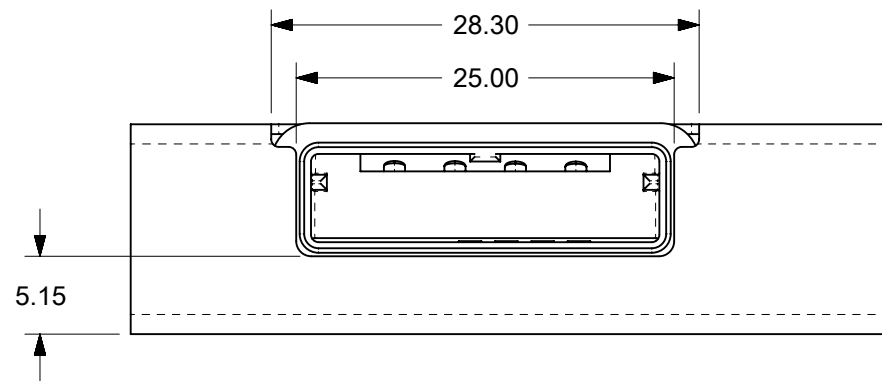
REF. SD-75586-001 FOR RECEPTACLE AND PCB LAYOUT INFORMATION

REF. SHEET 3 FOR GROUND PAD ALLEY LAYOUT INFORMATION

7.



STANDARD APPLICATION SHOWN USING 0 DEGREE GUIDE HOUSING ASSEMBLY



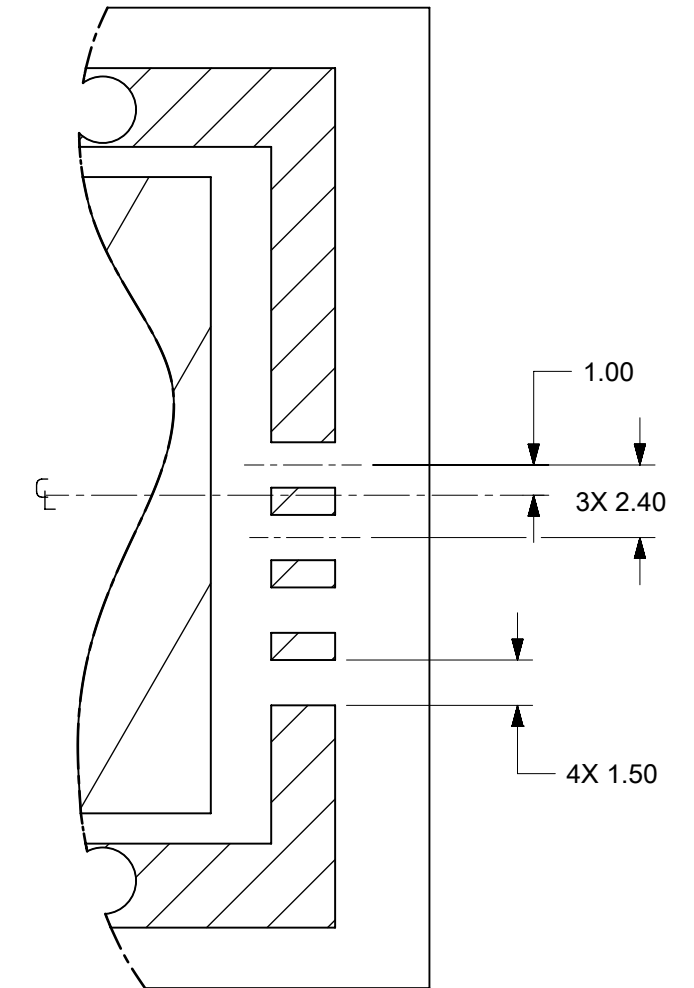
ADVANCED TCA APPLICATION SHOWN USING 0 DEGREE GUIDE HOUSING ASSEMBLY

iPass™ is a trademark of Molex.

THIS DRAWING CONTAINS INFORMATION THAT IS PROPRIETARY TO MOLEX ELECTRONIC TECHNOLOGIES, LLC AND SHOULD NOT BE USED WITHOUT WRITTEN PERMISSION											
DIMENSION UNITS		SCALE		CURRENT REV DESC:						molex	
MM		2:1									
GENERAL TOLERANCES (UNLESS SPECIFIED)				EC NO: 620216		DRWN: AKUMAR19		2018/05/29		IPASS X4 EMI GUIDE HOUSING ASSEMBLY W/ KEY	
4 PLACES ±		±		CHK'D: GGA		2019/07/09					
3 PLACES ±		±		APPR: GGA		2019/07/09		PRODUCT CUSTOMER DRAWING			
2 PLACES ±		0.05 ±		INITIAL REVISION:		DRWN: SNAVARRO		2006/05/26		DOCUMENT NUMBER	
1 PLACE ±		0.1 ±		APPR: DDOYE		2006/05/25		SD-74540-401		DOC TYPE DOC PART REVISION	
0 PLACES ±		±		ANGULAR TOL ± 0.5°		MATERIAL NUMBER		CUSTOMER		SHEET NUMBER	
DRAFT WHERE APPLICABLE MUST REMAIN WITHIN DIMENSIONS				THIRD ANGLE PROJECTION		DRAWING		SERIES		SEE P/N TABLE	
				B-SIZE		74540		GENERAL MARKET		2 OF 4	

P/N	DESCRIPTION	GEN	ELASTOMERIC GASKET FLAMMABILITY RATING
745400401	4X EMI GUIDE HOUSING ASSEMBLY - PCIE / 1 DEG	GEN1	
745400406	4X EMI GUIDE HOUSING ASSEMBLY - PCIE / 1 DEG	GEN1	EQUATE TO UL94 V-0
745400501	4X EMI GUIDE HOUSING ASSEMBLY - ATCA / 0 DEG	GEN1	

PCB THICKNESS	SCREW LENGTH	TORQUE (IN LBS)
1.6	5MM	2.3
2.38	6MM	2.3
3.2	6MM	2.3
X	+4MM MAX	2.3



PARTIAL 1
SCALE 4:1
GROUND PAD ALLEY
LAYOUT INFORMATION



THIS DRAWING CONTAINS INFORMATION THAT IS PROPRIETARY TO MOLEX ELECTRONIC TECHNOLOGIES, LLC AND SHOULD NOT BE USED WITHOUT WRITTEN PERMISSION									
DIMENSION UNITS MM		SCALE 1:1		CURRENT REV DESC:				molex	
GENERAL TOLERANCES (UNLESS SPECIFIED)				EC NO: 620216					
		MM	INCH	DRWN: AKUMAR19		2018/05/29		IPASS X4 EMI GUIDE HOUSING ASSEMBLY W/ KEY	
4 PLACES		±	±	CHK'D: GGA		2019/07/09			
3 PLACES		±	±	APPR: GGA		2019/07/09		PRODUCT CUSTOMER DRAWING	
2 PLACES		± 0.05	±	INITIAL REVISION:				DOCUMENT NUMBER	
1 PLACE		± 0.1	±	DRWN: SNAVARRO		2006/05/26		SD-74540-401	
0 PLACES		±	±	APPR: DDOYE		2006/05/25		DOC TYPE DOC PART REVISION	
ANGULAR TOL		± 0.5°		THIRD ANGLE PROJECTION		DRAWING		SERIES	
DRAFT WHERE APPLICABLE MUST REMAIN WITHIN DIMENSIONS				B-SIZE		74540		MATERIAL NUMBER	
				SEE P/N TABLE		CUSTOMER		SHEET NUMBER	
				GENERAL MARKET				3 OF 4	

