



Quick Start Guide

This Quick Start guide is valid for:
PDR-1000 (Order No. 1041980)

MNR 1095666

DNR 01169622_00

General information

User group of this manual

The use of products described in this manual is oriented exclusively to qualified electricians or persons instructed by them, who are familiar with applicable standards and other regulations regarding electrical engineering and, in particular, the relevant safety concepts.

Phoenix Contact accepts no liability for erroneous handling or damage to products from Phoenix Contact or third-party products resulting from disregard of information contained in this manual.

Explanation of symbols used and signal words



This is the safety alert symbol. It is used to alert you to potential personal injury hazards. Obey all safety messages that follow this symbol to avoid possible injury or death.



DANGER

This indicates a hazardous situation which, if not avoided, will result in death or serious injury



WARNING

This indicates a hazardous situation which, if not avoided, could result in death or serious injury.



CAUTION

This indicates a hazardous situation which, if not avoided, could result in minor or moderate injury.

The following types of messages provide information about possible property damage and general information concerning proper operation and ease-of-use.



NOTE

This symbol and the accompanying text alerts the reader to a situation which may cause damage or malfunction to the device, either hardware or software, or surrounding property.



This symbol and the accompanying text provides additional information to the reader. It is also used as a reference to other sources of information (manuals, data sheets, literature) on the subject matter, product, etc.

General terms and conditions of use for technical documentation

Phoenix Contact reserves the right to alter, correct, and/or improve the technical documentation and the products described in the technical documentation at its own discretion and without giving prior notice, insofar as this is reasonable for the user. The same applies to any technical changes that serve the purpose of technical progress.

The receipt of technical documentation (in particular data sheets, installation instructions, manuals, etc.) does not constitute any further duty on the part of Phoenix Contact to furnish information on alterations to products and/or technical documentation. Any other agreement shall only apply if expressly confirmed in writing by Phoenix Contact. Please note that the supplied documentation is product-specific documentation only and that you are responsible for checking the suitability and intended use of the products in your specific application, in particular with regard to observing the applicable standards and regulations.

Although Phoenix Contact makes every effort to ensure that the information content is accurate, up-to-date, and state-of-the-art, technical inaccuracies and/or printing errors in the information cannot be ruled out. Phoenix Contact does not offer any guarantees as to the reliability, accuracy or completeness of the information. All information made available in the technical data is supplied without any accompanying guarantee, whether expressly mentioned, implied or tacitly assumed. This information does not include any guarantees regarding quality, does not describe any fair marketable quality, and does not make any claims as to quality guarantees or guarantees regarding the suitability for a special purpose.

Phoenix Contact accepts no liability or responsibility for errors or omissions in the content of the technical documentation (in particular data sheets, installation instructions, manuals, etc.).

The aforementioned limitations of liability and exemptions from liability do not apply, in so far as liability must be assumed, e.g., according to product liability law, in cases of premeditation, gross negligence, on account of loss of life, physical injury or damage to health or on account of the viola-

tion of important contractual obligations. Claims for damages for the violation of important contractual obligations are, however, limited to contract-typical, predictable damages, provided there is no premeditation or gross negligence, or that liability is assumed on account of loss of life, physical injury or damage to health. This ruling does not imply a change in the burden of proof to the detriment of the user.

Statement of legal authority

This manual, including all illustrations contained herein, is copyright protected. Use of this manual by any third party is forbidden. Reproduction, translation, and public disclosure, as well as electronic and photographic archiving or alteration requires the express written consent of Phoenix Contact. Violators are liable for damages.

Phoenix Contact reserves all rights in the case of patent award or listing of a registered design. Third-party products are always named without reference to patent rights. The existence of such rights shall not be excluded.

How to contact us

Internet

Up-to-date information on Phoenix Contact products and our Terms and Conditions can be found on the Internet at:

phoenixcontact.com.

Subsidiaries

If there are any problems that cannot be solved using the documentation, please contact your Phoenix Contact subsidiary.

Subsidiary contact information is available at www.phoenixcontact.com.

Published by

PHOENIX CONTACT
P.O. Box 4100
Harrisburg, PA 17111-0100
USA
Telephone +1-717-944-1300

Should you have any suggestions or recommendations for improvement of the contents and layout of our manuals, please send your comments to tecdoc@phoenixcontact.com.

Device power-up

Wiring the controller

Refer to the documentation provided with the ILC 191 ETH 2TX controller (Order no. 2700976) for installation instructions.



Information for the ILC 191 ETH 2TX can be found at phoenixcontact.net/product/2700976

Installing the input modules



WARNING:

Always remove power from the device before installation or removal of modules.

Up to ten modules can be used on the bus at a time. The following modules are applicable for this application:

Table 1 Available modules

Order No.	Descriptor	Provides
2861302	IB IL AI 2/SF-PAC	Two analog channels
2861386	IB IL TEMP 2 UTH-PAC	Two thermocouple channels
2861328	IB IL TEMP 2 RTD-PAC	Two RTD channels
2700173	IB IL 24 DI8/HD-PAC	Eight digital inputs
2700172	IB IL 24 DO8/HD-PAC	Eight digital outputs

Refer to the individual module documentation for wiring instructions to field devices.

SD flash card memory

The PDR-1000 includes a pre-installed 2 GB SD card required for operation.



Only Phoenix Contact 2 GB cards are supported.

Connecting the user interface

1. Connect an Ethernet cable between an RJ45 port on the ILC 191 ETH 2TX controller and a computer.
2. Set the IP address of the computer to **192.168.0.100** or any unused IP address in **192.168.x.x** subnet with a subnet mask of **255.255.255.0**.

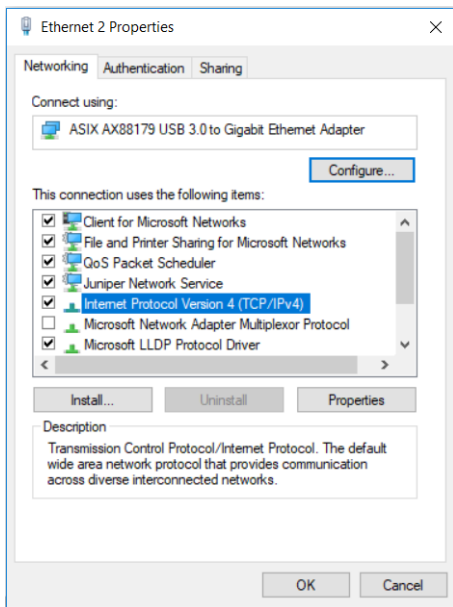


Figure 1 “Ethernet 2 Properties” dialog box

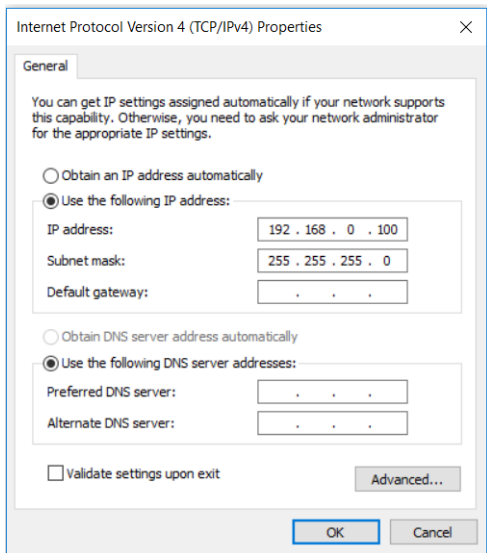


Figure 2 “Internet Protocol Version 4 (TCP/IPv4) Properties” dialog box

3. Open a browser (Google Chrome™ or Mozilla® Firefox® are recommended) and enter **http://192.168.0.5** in the “Address” field to load the user interface.

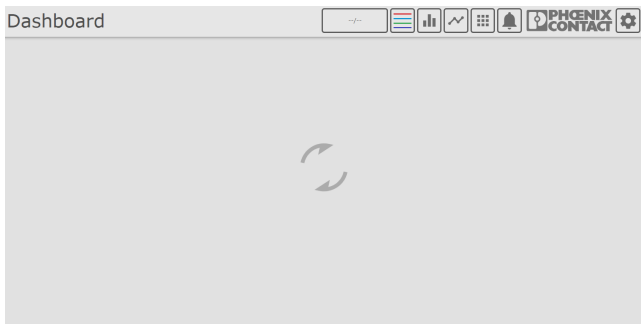


Figure 3 Initial connection loading screen

The loading screen will display with the application is loaded. This may take some time, depending on the network connection.

Configuring the connected modules

The first time connecting to the device will cause a prompt to configure the hardware setup to match the physical arrangement of modules.

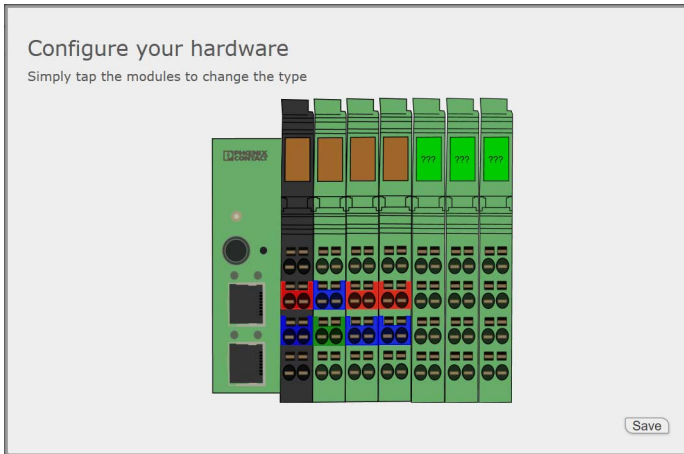


Figure 4 Hardware configuration

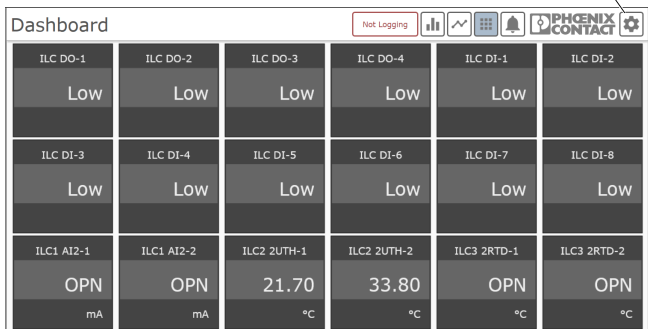
Click on each module, and click the appropriate module from the list to select it. Click the "Save" button when finished.

Accessing the administrative settings

The I/O channels, channel groupings, and recorded I/O list must be configured before logging can begin.

1. Click the “Configuration” button in the top right corner of the screen.

Configuration button



The screenshot shows a dashboard titled "Dashboard" with a "Not Logging" indicator and several utility icons. A red box highlights the "Configuration" button (gear icon) in the top right corner. Below the dashboard header is a grid of 18 I/O channel status cards arranged in 3 rows and 6 columns. Each card displays a channel name, a status value, and a unit.

ILC DO-1	ILC DO-2	ILC DO-3	ILC DO-4	ILC DI-1	ILC DI-2
LOW	LOW	LOW	LOW	LOW	LOW
ILC DI-3	ILC DI-4	ILC DI-5	ILC DI-6	ILC DI-7	ILC DI-8
LOW	LOW	LOW	LOW	LOW	LOW
ILC1 AI2-1	ILC1 AI2-2	ILC2 2UTH-1	ILC2 2UTH-2	ILC3 2RTD-1	ILC3 2RTD-2
OPN mA	OPN mA	21.70 °C	33.80 °C	OPN °C	OPN °C

Figure 5 Configuration button on the Dashboard

2. Enter the administrative credentials in the pop-up window. The default password is **private**.
3. Navigate to the I/O Configuration page and enter the I/O data as desired.