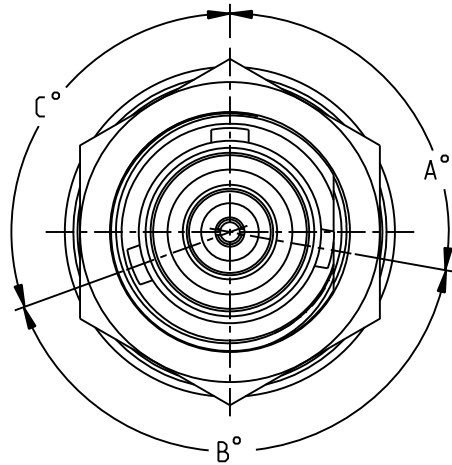
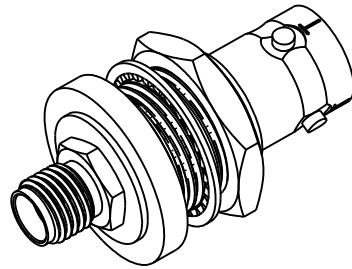
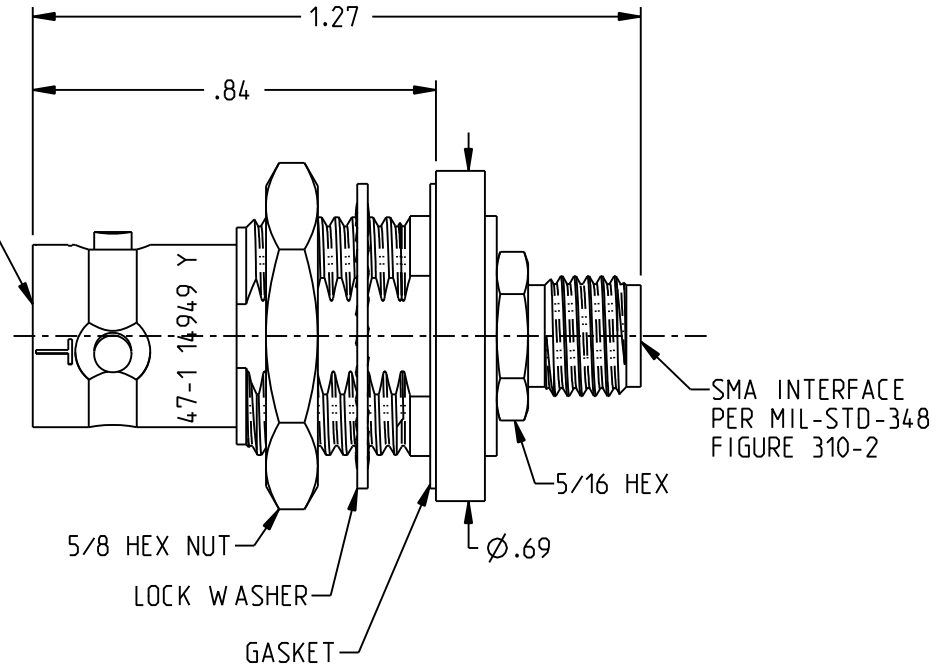


POLARIZATION CHART

TROMPETER PART NO	KEYING LETTER	A°	B°	C°
3-0347-1	T	100	150	110
3-0347-2	U	120	130	110
3-0347-3	V	115	130	115
3-0347-4	W	125	110	125
3-0347-5	X	130	100	130
3-0347-6	Y	110	140	110
3-0347-7	Z	100	160	100
3-0347-8	S	135	135	90
3-0347-9	NONE	120	120	120



TRB INTERFACE
PER MIL-STD-348
FIGURE 201-2



NOTES: UNLESS OTHERWISE SPECIFIED.

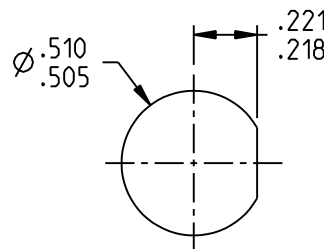
- MATERIAL AND FINISH:
 - 1.1 TRB BODY: NICKEL PLATED BRASS
 - 1.2 OUTER INSULATOR: PTFE (TEFLON)
 - 1.3 INTERMEDIATE CONTACT AND SMA BODY: GOLD PLATED BRASS
 - 1.4 DIELECTRIC: PTFE (TEFLON)
 - 1.5 CENTER CONTACT: GOLD PLATED BERYLLIUM COPPER
 - 1.6 HARDWARE: NICKEL PLATED COPPER ALLOY
 - 1.7 GASKET: SILICONE RUBBER

- ELECTRICAL:
 - 2.1 FREQUENCY (MAX): 500 MHz
 - 2.2 IMPEDANCE: NON-CONSTANT

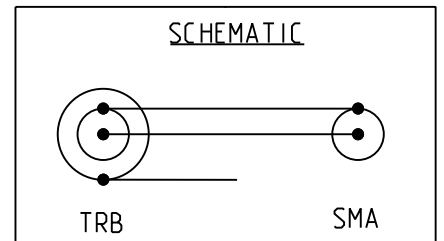
3. PANEL NUT TORQUE (MAX): 35 INCH POUND

4. PANEL THICKNESS (MAX): .160

3-0347-1 SHOWN



RECOMMENDED
PANEL CUTOUT



<p>This PROPRIETARY Document is property of Cinch Connectivity Solutions. It is confidential in nature, non-transferable, and issued with the clear understanding that it is not to be traced or copied without permission and is returnable upon demand.</p> <p>INTERPRET DRAWING IN ACCORDANCE WITH ASME Y14.5-2009.</p>	<p>3RD ANGLE PROJECTION</p>	<h2>TROMPETER</h2>	
	<p>RoHS2 <input checked="" type="checkbox"/></p> <p>2011/65/EU</p>	<p>Title: ADAPTER, TRB JACK TO SMA JACK, BULKHEAD MOUNT</p>	
<p>UNLESS OTHERWISE SPECIFIED UNITS: INCH</p> <p>.XX ±.02 .XXX ±.005 ANGLES ±2°</p>		<p>Model No.</p> <p>3-0347-X</p>	<p>Sheet</p> <p>1 OF 1</p>
<p>Size A</p>	<p>DO NOT SCALE DRAWING</p>	<p>Date: 11/21/2017</p>	