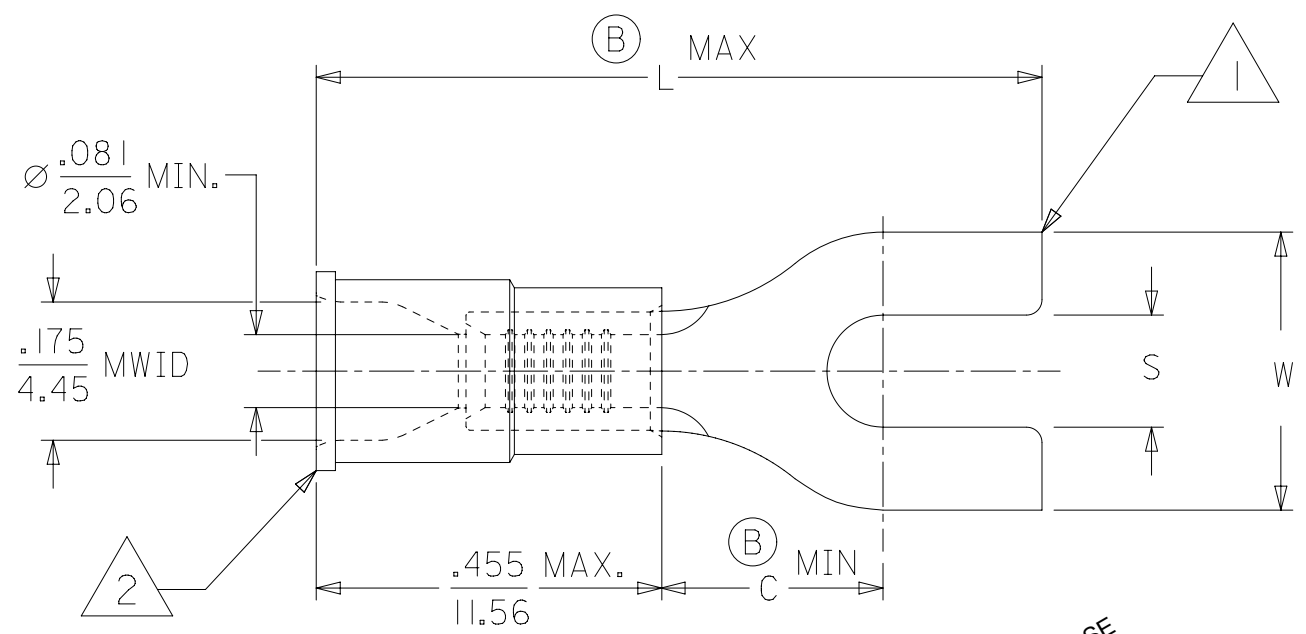
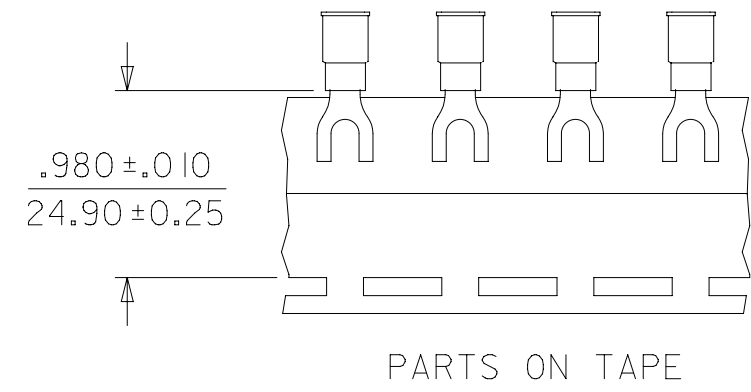


MATERIAL NUMBER	ENGINEERING NUMBER	STUD SIZE	"S" ±.005/(0.13)	"W" ±.010/(0.25)	Ⓟ "C" MIN	Ⓟ "L" MAX	PACKAGING
191420020	B-207-06X	6	.146/(3.71)	.245/(6.22)	.209/(5.31)	.834/(21.18)	LOOSE PIECE
191420024	B-224-06X	6	.146/(3.71)	.295/(7.49)	.211/(5.36)	.831/(21.11)	
191420027	B-224-08X	8	.173/(4.39)	.295/(7.49)	.211/(5.36)	.831/(21.11)	
191420029	B-227-06X	6	.146/(3.71)	.362/(9.19)	.269/(6.83)	.966/(24.54)	
191420030	B-227-08X	8	.173/(4.39)	.388/(9.85)	.269/(6.83)	.966/(24.54)	
191420032	B-227-10X	10	.198/(5.03)	.388/(9.85)	.269/(6.83)	.966/(24.54)	
191420069	B-207-04XT	4	.119/(3.02)	.245/(6.22)	.209/(5.31)	.834/(21.18)	TAPE MOUNTED
191420071	B-224-04XT	4	.119/(3.02)	.295/(7.49)	.211/(5.36)	.831/(21.11)	



- NOTES:
1. MATERIAL: COPPER .031/(.79) THICK.
 2. PLATING: ELECTRO-TIN.
 3. INSULATION: MOLDED PVC (BLUE)
 4. MWID=MAXIMUM WIRE INSULATION DIAMETER.

PRE-RELEASE
REFERENCE
USE ONLY

SALES DRAWING

THIS DRAWING CONTAINS INFORMATION THAT IS PROPRIETARY TO MOLEX ELECTRONIC TECHNOLOGIES, LLC AND SHOULD NOT BE USED WITHOUT WRITTEN PERMISSION																	
DIMENSION UNITS INCH/MM		SCALE 4:1		CURRENT REV DESC: OBSOLETE PART NUMBERS AS PER PCN#512131.				molex									
GENERAL TOLERANCES (UNLESS SPECIFIED)				EC NO: 72779													
				2022/10/06		2022/11/29		SPACE TONGUE TERMINAL INSULKRIMP 200 SERIES									
4 PLACES ±		±		DRWN: ANIKES1		2022/11/29											
3 PLACES ±		±		CHK'D: GGA		2022/11/29		PRODUCT CUSTOMER DRAWING									
2 PLACES ±		±		APPR: GGA		2022/11/29											
1 PLACE ±		±		INITIAL REVISION:				DOCUMENT NUMBER SD-19142-001		DOC TYPE PSD		DOC PART 001		REVISION C1			
0 PLACES ±		±		DRWN: HEB													
ANGULAR TOL ± °		± °		APPR: RWD				1999/11/12		1999/11/12		MATERIAL NUMBER SEE TABLE		CUSTOMER GENERAL MARKET		SHEET NUMBER 1 OF 1	
DRAFT WHERE APPLICABLE MUST REMAIN WITHIN DIMENSIONS				THIRD ANGLE PROJECTION 		DRAWING B-SIZE		SERIES 19142									