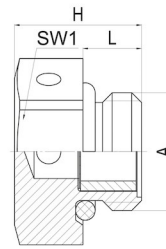
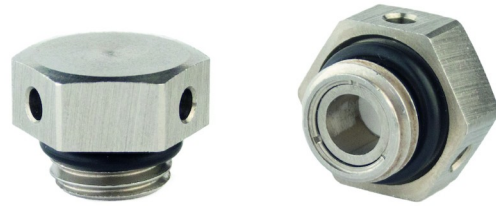


## Venting element

JDAExxESzzzz

<b>Body</b>	Stainless steel 1.4305
<b>Membrane</b>	Polyether sulphone PES
<b>O-ring</b>	Nitrile rubber NBR
<b>Connecting thread</b>	metric, as per EN 60423
<b>Sleeve</b>	Stainless steel 1.4305 (M12x1,5) Polyamide PA6 (M20x1,5 and M40x1,5)




### Properties

	<ul style="list-style-type: none"> <li>• protection for hermetically sealed electro-technical and electronic enclosures against condensation water from alternating temperature and pressure</li> <li>• pressure, continuous ventilation and adaption of the inner pressure</li> <li>• hydrophobic and oleophobic PES-membrane</li> </ul>
<b>Water entry pressure</b>	> 0,83 bar (dynamic WEP, 30 seconds)
<b>Temperature range</b>	-40 °C +100 °C
<b>Protection grade</b>	IP66/ IP68 - 0,6 bar (60 min.)/ IP69
<b>Comment</b>	The venting element has no function if it is blocked with dust and / or submerged in water.

### Features

Connecting thread short

A	L	SW1	H	RQ*		Part No.
M12x1,5	6	17	13	ca. 6	25	JDAE12ES4305
M20x1,5	6	24	13	ca. 11	10	JDAE20ES4305
M40x1,5	8	45	18	ca. 75	5	JDAE40ES4305

\*RQ = theoretical air flow through usable surface at  $\Delta p = 0,07$  bar