

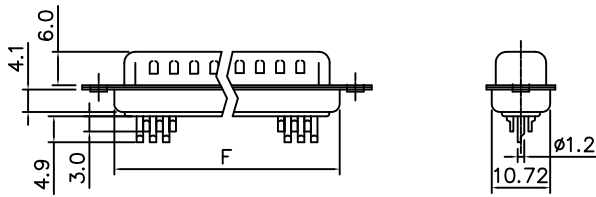
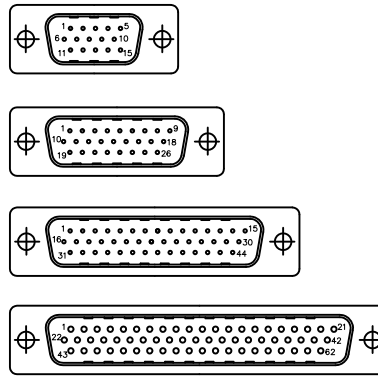
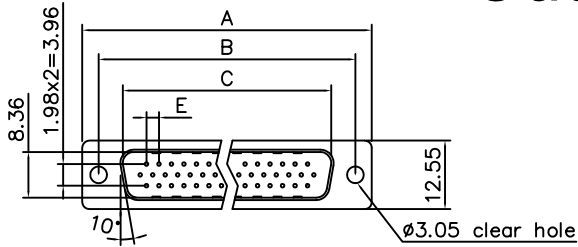
This document is the property of Amphenol Corporation and is delivered on the express condition that it is not to be disclosed, reproduced or used, in whole or in part, for manufacture or sale by anyone other than Amphenol Corporation without its prior consent, & that no right is granted to disclose or to use any information in this document.

# Customer drawing

REVISIONS				
SYM	ECN	DESCRIPTION	DATE	APPROVED
1	HK---	First Release Drawing	10/18/17	IP

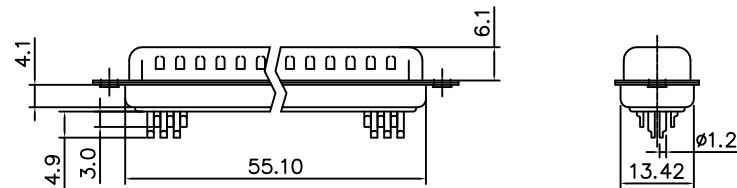
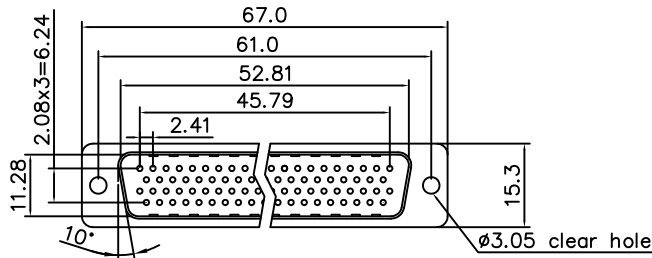
## D-SUB TECHNICAL DATA

SHELL : Steel, 100u" min Tin over 50u" min nickel over 50u" min Copper  
 BODY : Glass-Filled Thermoplastic PBT, UL94V-0, color black  
 CONTACTS : Copper alloy  
 30u" Gold flash over 50u" min nickel on mating area  
 100u" min tin over 50u" min nickel on solder area  
 ELECTRICAL : Voltage rating 250 VAC/RMS  
 Current Rating :3 AMP  
 Withstanding Voltage >1000 VAC/RMS  
 Insulation resistance >1000 M Ohms  
 Contact resistance 20 mOhms max  
 MARKING : Amphenol...(Series No.)  
 Commercial reference  
 Manufacturing date



### Dimensions

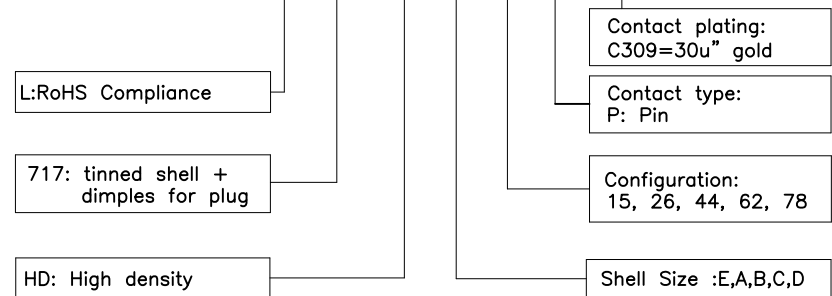
Positions	A	B	C	E	F
15	30.81	24.99	16.92	2.29	19.20
26	39.20	33.30	25.25	2.29	27.70
44	53.04	47.04	38.96	2.29	41.10
62	69.40	63.50	55.42	2.41	57.30



78 Positions

### PRODUCT CODE

L 717 HD X XX P C309



UNLESS OTHERWISE SPECIFIED TOLERANCES	APPROVAL		DATE
	DRAWN	Stuen	10/18/17
.X +/-	0.50	CHECKED	Tong.Tang
.XX +/-	0.30	CHECKED	
.XXX +/-	0.20		
FRACTIONS +/-	5'		
ANGLES +/-			
FOR MATERIALS AND FINISHES SEE NOTES	DRAWING FILE :		
REMOVE SHARP EDGES	ANGLE OF PROJECTION		
DIMENSIONS			
U.S. INCHES			
METRIC MM			

TITLE  
Solder type, D-Sub connector

SIZE	DRAWING NO.	REV.
A4	L717HDXXXPC309	1
SCALE	NONE	SHEET 1 OF 1